

KANSAS CORPORATION COMMISSION
OIL & GAS CONSERVATION DIVISION

TEMPORARY ABANDONMENT WELL APPLICATION

OPERATOR: License#
Name:
Address 1:
Address 2:
City: State: Zip:
Contact Person:
Phone:
Contact Person Email:
Field Contact Person:
Field Contact Person Phone:

API No. 15-
Spot Description:
Sec. Twp. S. R.
GPS Location: Lat: Long:
Datum: NAD27 NAD83 WGS84
County: Elevation:
Lease Name: Well #:
Well Type: Oil Gas OG WSW Other:
SWD Permit #: ENHR Permit #:
Gas Storage Permit #:
Spud Date: Date Shut-In:

Table with 7 columns: Conductor, Surface, Production, Intermediate, Liner, Tubing. Rows include Size, Setting Depth, Amount of Cement, Top of Cement, Bottom of Cement.

Casing Fluid Level from Surface: How Determined? Date:
Casing Squeeze(s): to w / sacks of cement, to w / sacks of cement. Date:
Do you have a valid Oil & Gas Lease? Yes No
Depth and Type: Junk in Hole at Tools in Hole at Casing Leaks: Yes No Depth of casing leak(s):
Type Completion: ALT. I ALT. II Depth of: DV Tool: w / sacks of cement Port Collar: w / sack of cement
Packer Type: Size: Inch Set at: Feet
Total Depth: Plug Back Depth: Plug Back Method:

Geological Data:

Table with 4 columns: Formation Name, Formation Top, Formation Base, Completion Information. Rows 1 and 2.

UNDER PENALTY OF PERJURY I HEREBY ATTEST THAT THE INFORMATION CONTAINED HEREIN IS TRUE AND CORRECT TO THE BEST OF MY KNOWLEDGE

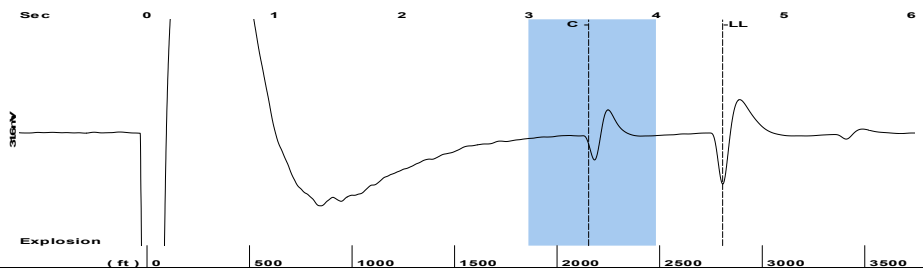
Submitted Electronically

Do NOT Write in This Space - KCC USE ONLY
Date Tested: Results: Date Plugged: Date Repaired: Date Put Back in Service:
Review Completed by: Comments:
TA Approved: Yes Denied Date:

Mail to the Appropriate KCC Conservation Office:

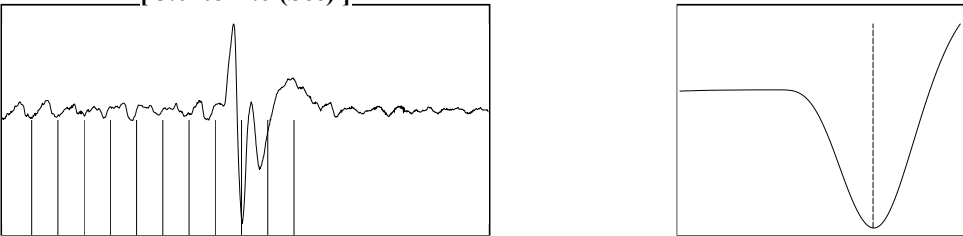
Table with 2 columns: Office Address, Phone. Rows for District Office #1, #2, #3, #4.

Group: MyWells Well: Ratzliff 2-28 (acquired on: 06/26/23 14:50:14)



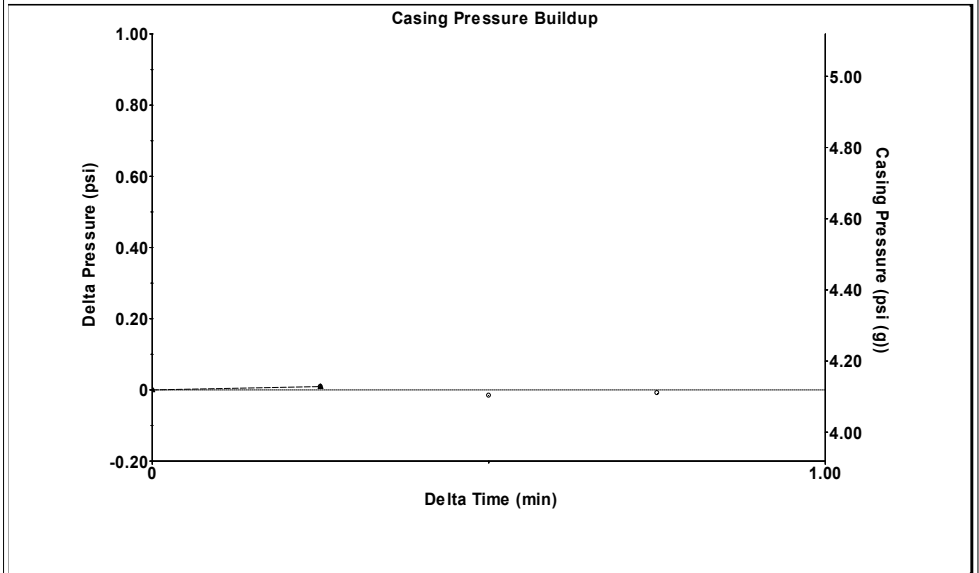
Filter Type High Pass Automatic Collar Count Yes Time 4.52 sec
 Manual Acoustic Veloc 1176.25 ft/s Manual JTS/sec 18.5529 Joints 88.5448 Jts
 Depth 2806.87 ft

[3.0 to 4.0 (Sec)]



Analysis Method: Automatic

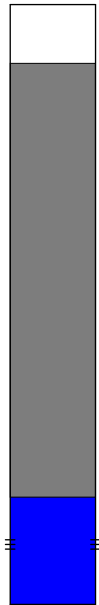
Group: MyWells Well: Ratzliff 2-28 (acquired on: 06/26/23 14:50:14)



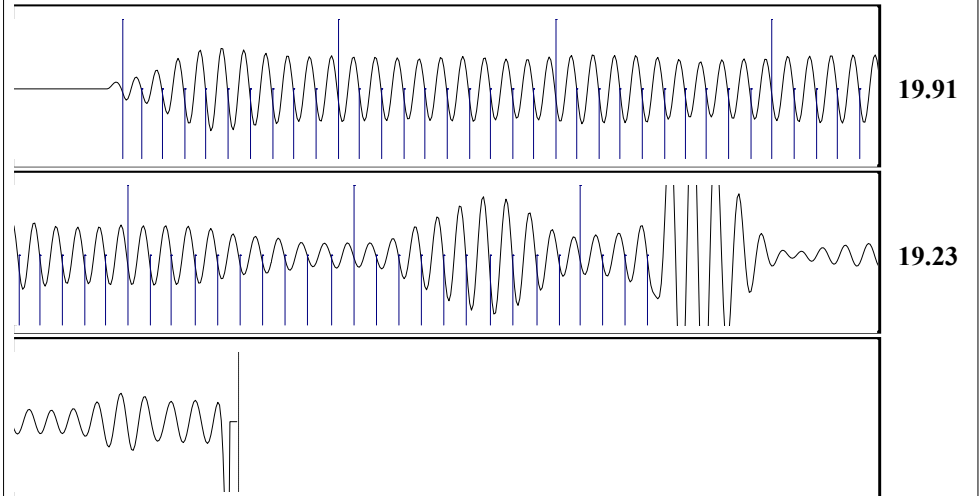
Change in Pressure -0.01 psi PT18175
 Change in Time 0.75 min Range 0 - ? psi

Group: MyWells Well: Ratzliff 2-28 (acquired on: 06/26/23 14:50:14)

Production		Potential	Casing Pressure	Static
Current			4.1 psi (g)	
Oil -*-	-*- BBL/D		Casing Pressure Buildup	Oil Column Height
Water -*-	-*- BBL/D		-0.008 psi	MD 0 ft
Gas -*-	-*- Mscf/D		0.75 min	
			Gas/Liquid Interface Pressure	Water Column Height
			5.5 psi (g)	MD 305 ft
IPR Method	Vogel		Liquid Level Depth	Pump Intake Depth
PBHP/SBHP	-*-		2806.87 ft	-*- ft
Production Efficiency	0.0		Formation Depth	
			3118.00 ft	
Oil 40 deg.API				Static BHP
Water 1.05 Sp.Gr.H2O				144.2 psi (g)
Gas 0.76 Sp.Gr.AIR				



Group: MyWells Well: Ratzliff 2-28 (acquired on: 06/26/23 14:50:14)



Acoustic Velocity	1241.98 ft/s	Joints counted	63
Joints Per Second	19.5896 jts/sec	Joints to liquid level	88.5448
Depth to liquid level	2806.87 ft	Filter Width	16.5529 20.5529
Automatic Collar Count	Yes	Time to 1st Collar	0.252 3.468

July 06, 2023

Liv Adams
XTO Energy Inc.
210 PARK AVE STE 2240
OKLAHOMA CITY, OK 73102

Re: Temporary Abandonment
API 15-093-21526-00-00
RATZLAFF 2-28
SW/4 Sec.28-23S-36W
Kearny County, Kansas

Dear Liv Adams:

"Your temporary abandonment (TA) application for the well listed above has been approved. In accordance with K.A.R. 82-3-111 the TA status of this well will expire 07/06/2024.

- * If you return this well to service or plug it, please notify the District Office.
- * If you sell this well you are required to file a Transfer of Operator form, T-1.
- * If the well will remain temporarily abandoned, you must submit a new TA application, CP-111, before 07/06/2024.

You may contact me at the number above if you have questions.

Very truly yours,

Michael Maier"