

KANSAS CORPORATION COMMISSION
OIL & GAS CONSERVATION DIVISION

TEMPORARY ABANDONMENT WELL APPLICATION

OPERATOR: License#
Name:
Address 1:
Address 2:
City: State: Zip:
Contact Person:
Phone:
Contact Person Email:
Field Contact Person:
Field Contact Person Phone:

API No. 15-
Spot Description:
Sec. Twp. S. R.
GPS Location: Lat: Long:
Datum: NAD27 NAD83 WGS84
County: Elevation:
Lease Name: Well #:
Well Type: Oil Gas OG WSW Other:
SWD Permit #: ENHR Permit #:
Gas Storage Permit #:
Spud Date: Date Shut-In:

Table with 7 columns: Conductor, Surface, Production, Intermediate, Liner, Tubing. Rows include Size, Setting Depth, Amount of Cement, Top of Cement, Bottom of Cement.

Casing Fluid Level from Surface: How Determined? Date:
Casing Squeeze(s): to w / sacks of cement, to w / sacks of cement. Date:
Do you have a valid Oil & Gas Lease? Yes No
Depth and Type: Junk in Hole at Tools in Hole at Casing Leaks: Yes No Depth of casing leak(s):
Type Completion: ALT. I ALT. II Depth of: DV Tool: w / sacks of cement Port Collar: w / sack of cement
Packer Type: Size: Inch Set at: Feet
Total Depth: Plug Back Depth: Plug Back Method:

Geological Data:

Table with 4 columns: Formation Name, Formation Top, Formation Base, Completion Information. Rows 1 and 2.

UNDER PENALTY OF PERJURY I HEREBY ATTEST THAT THE INFORMATION CONTAINED HEREIN IS TRUE AND CORRECT TO THE BEST OF MY KNOWLEDGE

Submitted Electronically

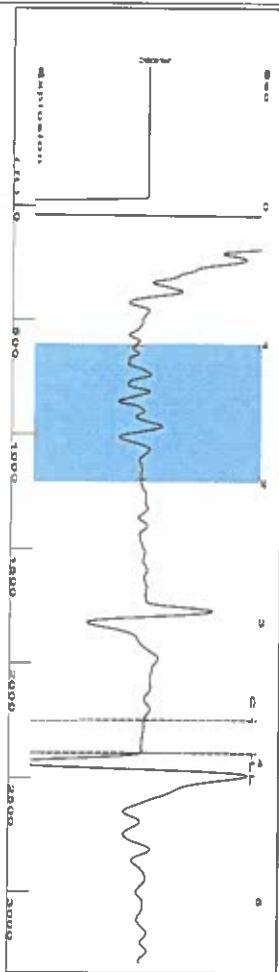
Do NOT Write in This Space - KCC USE ONLY
Date Tested: Results: Date Plugged: Date Repaired: Date Put Back in Service:
Review Completed by: Comments:
TA Approved: Yes Denied Date:

Mail to the Appropriate KCC Conservation Office:

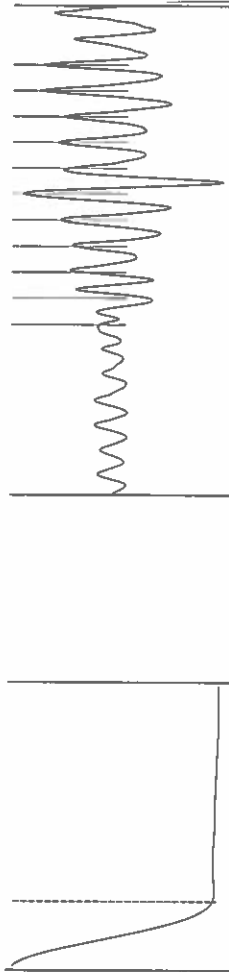
Table with 3 columns: District Office, Address, Phone. Rows for District Office #1, #2, #3, #4.

Shot @ 400 ft JK

Group: Liberal Wells Well: Dudley 1-18 (acquired on 07/12/23 14:15:44)



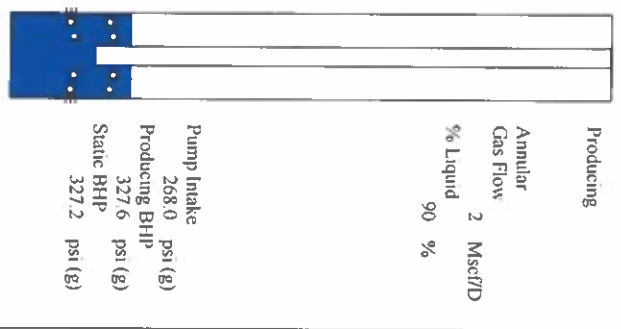
Filter Type High Pass Automatic Collar Count Yes
 Manual Acoustic Velocity 1191.73 ft/s Manual JTS/sec 18.797
 Time 3.937 sec
 Joints 75.5355 Jts
 Depth 2394.47 ft



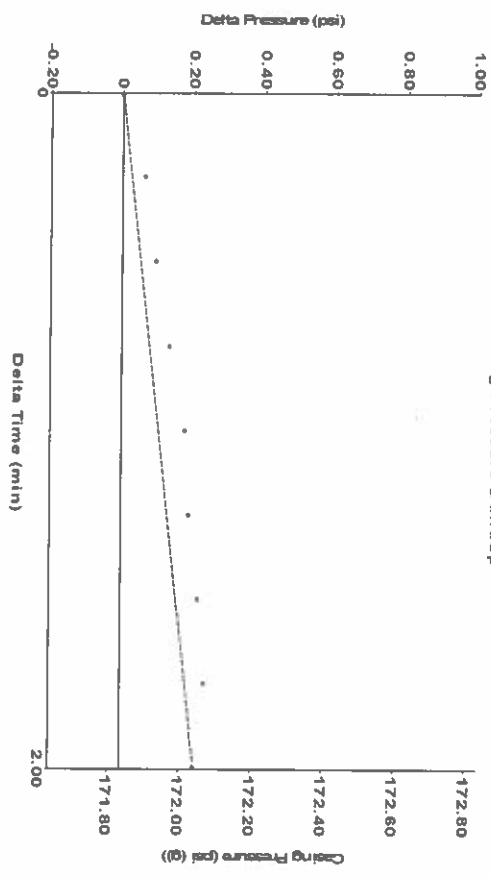
Analysis Method: Automatic

Group: Liberal Wells Well: Dudley 1-18 (acquired on 07/12/23 14:15:44)

Production	Potential	Casing Pressure	Producing
Oil 0	BB/LD	171.8 psi (g)	Annular Gas Flow
Water 0	BB/LD	Casing Pressure Buildup 0.2 psi	2 Mscf/D
Gas 0.0	Mscf/D	2.00 min	% Liquid 90 %
IPR Method	Vogel	Gas/Liquid Interface Pressure	
PBHP/SBHP	-*-	183.9 psi (g)	
Production Efficiency 0.0			
Oil 40 deg API	Liquid Level Depth		
Water 1.05 Sp Gr H2O	2394.47 ft		
Gas 0.76 Sp Gr AIR	Pump Intake Depth		
	2600.00 ft		
Acoustic Velocity	1216.4 ft/s	Formation Depth	
		2742.00 ft	
Formation Submergence			
Total Gaseous Liquid Column HT (TVD)			
Equivalent Gas Free Liquid HT (TVD)			
Acoustic Test			

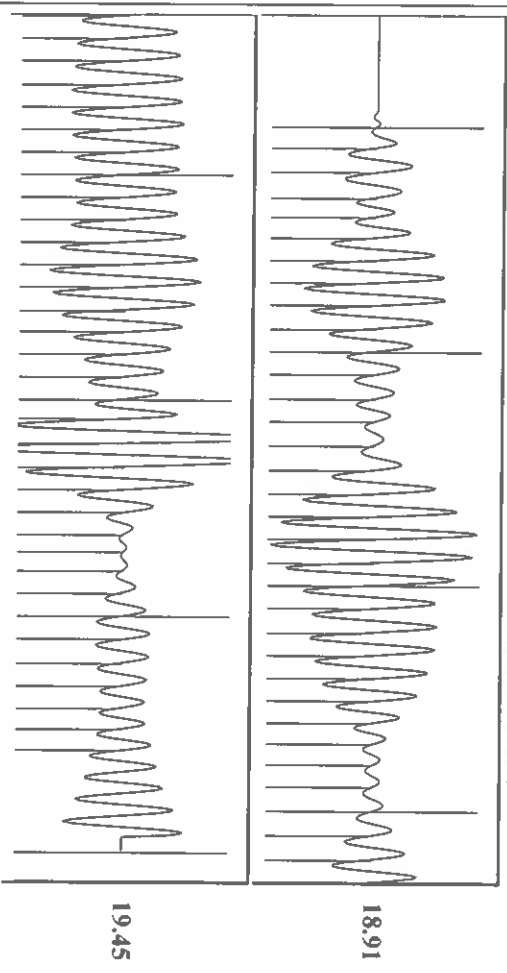


Group: Liberal Wells Well: Dudley 1-18 (acquired on 07/12/23 14:15:44)



Change in Pressure 0.21 psi PT 11249
 Change in Time 2.00 min Range 0 - 7 psi

Group: Liberal Wells Well: Dudley 1-18 (acquired on 07/12/23 14:15:44)



Acoustic Velocity	1216.4 ft/s	Joints counted	66
Joints Per Second	19.186 Jts/sec	Joints to liquid level	75.5355
Depth to liquid level	2394.47 ft	Filter Width	16.797
Automatic Collar Count	Yes	Time to 1st Collar	0.26
			20.797
			3.7

July 13, 2023

Katherine McClurkan
Merit Energy Company, LLC
13727 Noel Road, Suite 1200
Dallas, TX 75240-7362

Re: Temporary Abandonment
API 15-175-21424-00-00
Dudrey 1-18
NW/4 Sec.18-33S-31W
Seward County, Kansas

Dear Katherine McClurkan:

"Your temporary abandonment (TA) application for the well listed above has been approved. In accordance with K.A.R. 82-3-111 the TA status of this well will expire 07/13/2024.

- * If you return this well to service or plug it, please notify the District Office.
- * If you sell this well you are required to file a Transfer of Operator form, T-1.
- * If the well will remain temporarily abandoned, you must submit a new TA application, CP-111, before 07/13/2024.

You may contact me at the number above if you have questions.

Very truly yours,

Michael Maier"