

KANSAS CORPORATION COMMISSION
OIL & GAS CONSERVATION DIVISION

TEMPORARY ABANDONMENT WELL APPLICATION

OPERATOR: License#
Name:
Address 1:
Address 2:
City: State: Zip:
Contact Person:
Phone:
Contact Person Email:
Field Contact Person:
Field Contact Person Phone:

API No. 15-
Spot Description:
Sec. Twp. S. R.
GPS Location: Lat: Long:
Datum: NAD27 NAD83 WGS84
County: Elevation:
Lease Name: Well #:
Well Type: Oil Gas OG WSW Other:
SWD Permit #: ENHR Permit #:
Gas Storage Permit #:
Spud Date: Date Shut-In:

Table with 7 columns: Conductor, Surface, Production, Intermediate, Liner, Tubing. Rows include Size, Setting Depth, Amount of Cement, Top of Cement, Bottom of Cement.

Casing Fluid Level from Surface: How Determined? Date:
Casing Squeeze(s): to w / sacks of cement, to w / sacks of cement. Date:
Do you have a valid Oil & Gas Lease? Yes No
Depth and Type: Junk in Hole at Tools in Hole at Casing Leaks: Yes No Depth of casing leak(s):
Type Completion: ALT. I ALT. II Depth of: DV Tool: w / sacks of cement Port Collar: w / sack of cement
Packer Type: Size: Inch Set at: Feet
Total Depth: Plug Back Depth: Plug Back Method:

Geological Data:

Table with 4 columns: Formation Name, Formation Top, Formation Base, Completion Information. Rows 1 and 2.

UNDER PENALTY OF PERJURY I HEREBY ATTEST THAT THE INFORMATION CONTAINED HEREIN IS TRUE AND CORRECT TO THE BEST OF MY KNOWLEDGE

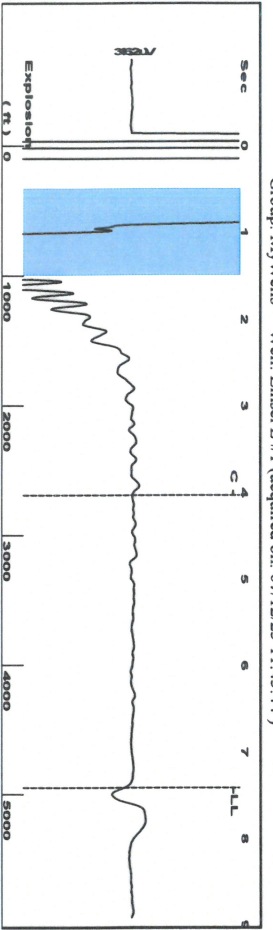
Submitted Electronically

Do NOT Write in This Space - KCC USE ONLY
Date Tested: Results: Date Plugged: Date Repaired: Date Put Back in Service:
Review Completed by: Comments:
TA Approved: Yes Denied Date:

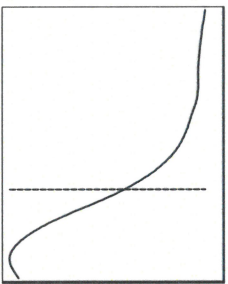
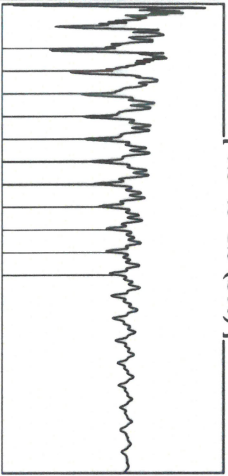
Mail to the Appropriate KCC Conservation Office:

Table with 2 columns: Office Address, Phone. Rows for District Office #1, #2, #3, #4.

Group: MyWells Well: Einsel L #1 (acquired on: 07/12/23 11:43:44)



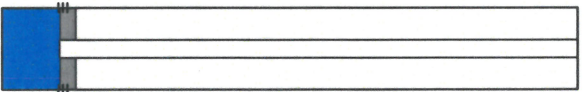
Filter Type High Pass Automatic Collar Count Yes
 Manual Acoustic Veloc 1307.22 ft/s Manual JTS/sec 20.6186
 Time 7.41 sec
 Joints 156.021 Jts
 Depth 4945.86 ft



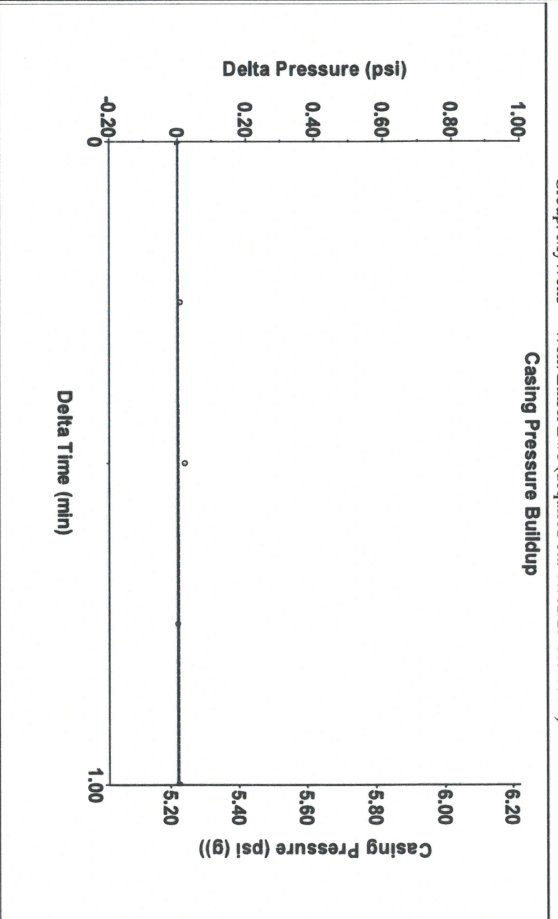
Analysis Method: Automatic

Group: MyWells Well: Einsel L #1 (acquired on: 07/12/23 11:43:44)

Production	Potential	Casing Pressure	Static
Current	-*- BBL/D	5.2 psi (g)	Oil Column Height
Oil	-*- BBL/D	Casing Pressure Buildup	MD 0 ft
Water	-*- Mscf/D	0.0 psi	Water Column Height
Gas	-*- Mscf/D	1.00 min	MD 140 ft
IPR Method	Vogel	Gas/Liquid Interface Pressure	
PBHP/SBHP	-*-	7.6 psi (g)	
Production Efficiency	0.0		
Oil	40 deg API	Liquid Level Depth	
Water	1.05 Sp.Gr.H2O	4945.86 ft	
Gas	0.68 Sp.Gr.AIR	Pump Intake Depth	
Acoustic Velocity	1334.91 ft/s	5124.00 ft	
		Formation Depth	
		5086.00 ft	

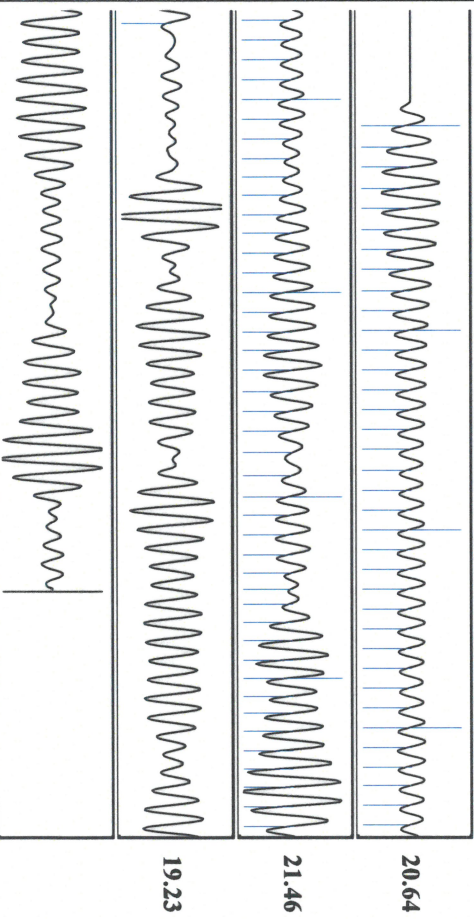


Group: MyWells Well: Einsel L #1 (acquired on: 07/12/23 11:43:44)



Change in Pressure 0.01 psi PT 8064
 Change in Time 1.00 min Range

Group: MyWells Well: Einsel L #1 (acquired on: 07/12/23 11:43:44)



Acoustic Velocity 1334.91 ft/s Joints counted 79
 Joints Per Second 21.0554 ft/sec Joints to liquid level 156.021
 Depth to liquid level 4945.86 ft Filter Width 18.6186
 Automatic Collar Count Yes Time to 1st Collar 0.28 22.6186
 4.032

July 13, 2023

Michael J Reilly
Grand Mesa Operating Company
1700 N WATERFRONT PKWY BLDG 600
WICHITA, KS 67206-5514

Re: Temporary Abandonment
API 15-033-20642-00-00
EINSEL L 1
NE/4 Sec.11-33S-17W
Comanche County, Kansas

Dear Michael J Reilly:

"Your temporary abandonment (TA) application for the well listed above has been approved. In accordance with K.A.R. 82-3-111 the TA status of this well will expire 07/13/2024.

- * If you return this well to service or plug it, please notify the District Office.
- * If you sell this well you are required to file a Transfer of Operator form, T-1.
- * If the well will remain temporarily abandoned, you must submit a new TA application, CP-111, before 07/13/2024.

You may contact me at the number above if you have questions.

Very truly yours,

Michael Maier"