

KANSAS CORPORATION COMMISSION
OIL & GAS CONSERVATION DIVISION

Form must be Typed
Form must be signed

TEMPORARY ABANDONMENT WELL APPLICATION

All blanks must be complete

OPERATOR: License#
Name:
Address 1:
Address 2:
City: State: Zip:
Contact Person:
Phone:
Contact Person Email:
Field Contact Person:
Field Contact Person Phone:

API No. 15-
Spot Description:
Sec. Twp. S. R.
feet from N / S Line of Section
feet from E / W Line of Section
GPS Location: Lat: , Long:
Datum: NAD27 NAD83 WGS84
County: Elevation: GL KB
Lease Name: Well #:
Well Type: Oil Gas OG WSW Other:
SWD Permit #: ENHR Permit #:
Gas Storage Permit #:
Spud Date: Date Shut-In:

Table with 7 columns: Conductor, Surface, Production, Intermediate, Liner, Tubing. Rows include Size, Setting Depth, Amount of Cement, Top of Cement, Bottom of Cement.

Casing Fluid Level from Surface: How Determined? Date:
Casing Squeeze(s): to w / sacks of cement, to w / sacks of cement. Date:
Do you have a valid Oil & Gas Lease? Yes No
Depth and Type: Junk in Hole at Tools in Hole at Casing Leaks: Yes No Depth of casing leak(s):
Type Completion: ALT. I ALT. II Depth of: DV Tool: w / sacks of cement Port Collar: w / sack of cement
Packer Type: Size: Inch Set at: Feet
Total Depth: Plug Back Depth: Plug Back Method:

Geological Data:

Table with 4 columns: Formation Name, Formation Top, Formation Base, Completion Information. Rows 1 and 2.

UNDER PENALTY OF PERJURY I HEREBY ATTEST THAT THE INFORMATION CONTAINED HEREIN IS TRUE AND CORRECT TO THE BEST OF MY KNOWLEDGE

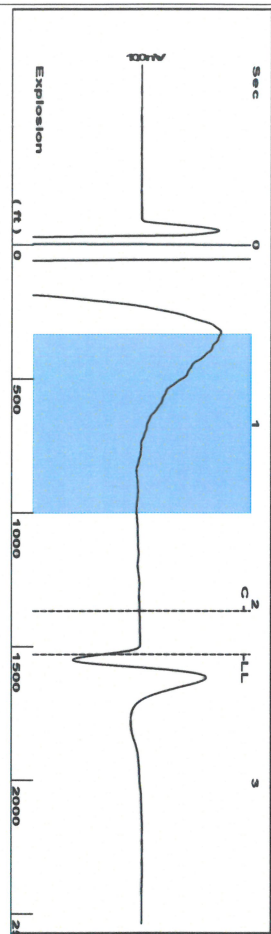
Submitted Electronically

Do NOT Write in This Space - KCC USE ONLY
Date Tested: Results: Date Plugged: Date Repaired: Date Put Back in Service:
Review Completed by: Comments:
TA Approved: Yes Denied Date:

Mail to the Appropriate KCC Conservation Office:

Table with 3 columns: District Office #, Address, Phone. Rows 1-4.

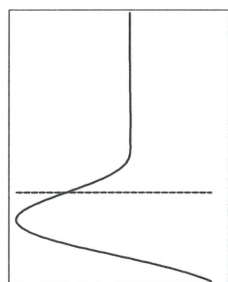
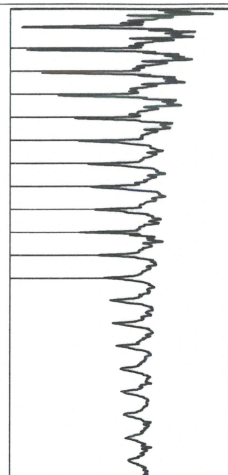
Group: MyWells Well: Merrill Ranch C3 (acquired on: 07/12/23 10:42:30)



Filter Type High Pass
Manual Acoustic Velocity 1319.51 ft/s
Automatic Collar Count Yes
Manual JTS/sec 20.3252

Time 2.281 sec
Joints 47.0965 Jts
Depth 1528.75 ft

| 0.5 to 1.5 (Sec) |



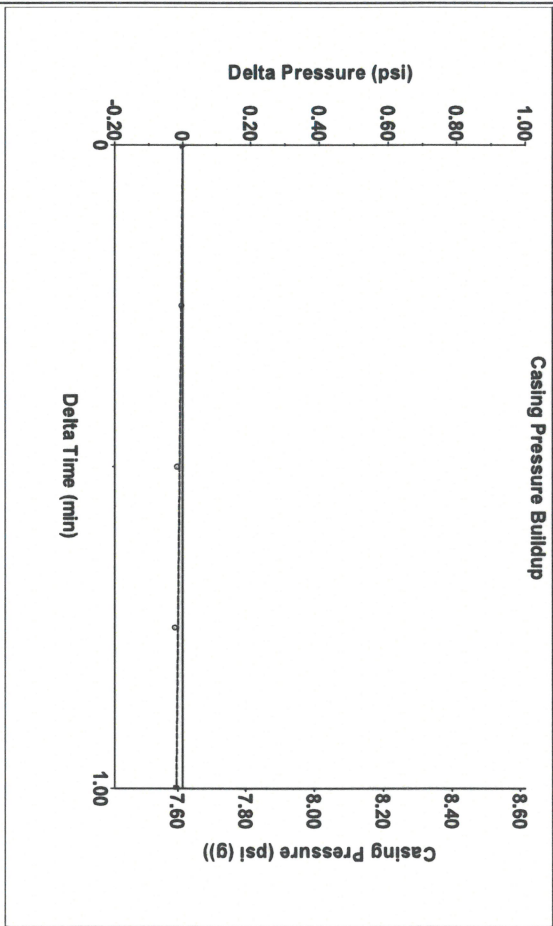
Analysis Method: Automatic

Group: MyWells Well: Merrill Ranch C3 (acquired on: 07/12/23 10:42:30)

Production	Potential	Casing Pressure	Static
Current	Oil 0	7.6 psi (g)	Oil Column Height
	Water 0	Casing Pressure Buildup	MID 0 ft
	Gas 0.0	-0.0 psi	
IPR Method		1.00 min	
PBHP/SBHP	Vogel	Gas/Liquid Interface Pressure	
Production Efficiency	0.0	8.4 psi (g)	
		Liquid Level Depth	Water Column Height
		1528.75 ft	MID 3351 ft
Oil 40 deg API			
Water 1.05 Sp.Gr.H2O			
Gas 0.65 Sp.Gr.AIR			
		Pump Intake Depth	
		4967.00 ft	
		Formation Depth	
		4886.00 ft	
Acoustic Velocity	1340.42 ft/s		
			Static BHP
			1532.0 psi (g)



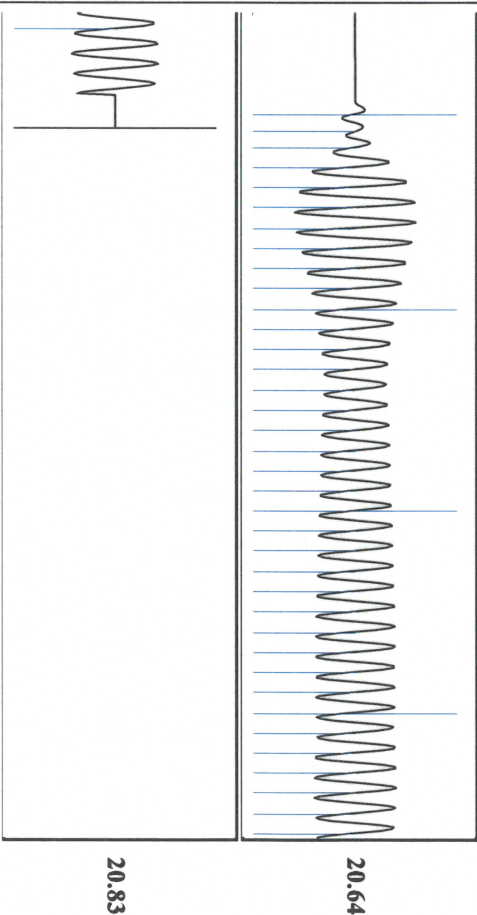
Group: MyWells Well: Merrill Ranch C3 (acquired on: 07/12/23 10:42:30)



Change in Pressure -0.02 psi
Change in Time 1.00 min
PT 8064
Range

0 - ? psi

Group: MyWells Well: Merrill Ranch C3 (acquired on: 07/12/23 10:42:30)



Acoustic Velocity 1340.42 ft/s
Joints Per Second 20.6473 Jts/sec
Depth to liquid level 1528.75 ft
Automatic Collar Count Yes

Joints counted 37
Joints to liquid level 47.0965
Filter Width 18.3252
Time to 1st Collar 0.248

20.83

20.64

July 13, 2023

Michael J Reilly
Grand Mesa Operating Company
1700 N WATERFRONT PKWY BLDG 600
WICHITA, KS 67206-5514

Re: Temporary Abandonment
API 15-033-21539-00-00
MERRILL RANCH C 3
NW/4 Sec.33-33S-16W
Comanche County, Kansas

Dear Michael J Reilly:

"Your temporary abandonment (TA) application for the well listed above has been approved. In accordance with K.A.R. 82-3-111 the TA status of this well will expire 07/13/2024.

- * If you return this well to service or plug it, please notify the District Office.
- * If you sell this well you are required to file a Transfer of Operator form, T-1.
- * If the well will remain temporarily abandoned, you must submit a new TA application, CP-111, before 07/13/2024.

You may contact me at the number above if you have questions.

Very truly yours,

Michael Maier"