

KANSAS CORPORATION COMMISSION
OIL & GAS CONSERVATION DIVISION

TEMPORARY ABANDONMENT WELL APPLICATION

OPERATOR: License#
Name:
Address 1:
Address 2:
City: State: Zip:
Contact Person:
Phone:
Contact Person Email:
Field Contact Person:
Field Contact Person Phone:

API No. 15-
Spot Description:
Sec. Twp. S. R.
GPS Location: Lat, Long
Datum: NAD27, NAD83, WGS84
County: Elevation:
Lease Name: Well #:
Well Type: Oil, Gas, OG, WSW, Other
SWD Permit #: ENHR Permit #:
Gas Storage Permit #:
Spud Date: Date Shut-In:

Table with 7 columns: Conductor, Surface, Production, Intermediate, Liner, Tubing. Rows include Size, Setting Depth, Amount of Cement, Top of Cement, Bottom of Cement.

Casing Fluid Level from Surface: How Determined? Date:
Casing Squeeze(s): to w / sacks of cement, to w / sacks of cement. Date:
Do you have a valid Oil & Gas Lease? Yes No
Depth and Type: Junk in Hole at Tools in Hole at Casing Leaks: Yes No Depth of casing leak(s):
Type Completion: ALT. I ALT. II Depth of: DV Tool: w / sacks of cement Port Collar: w / sack of cement
Packer Type: Size: Inch Set at: Feet
Total Depth: Plug Back Depth: Plug Back Method:

Geological Date:

Table with 4 columns: Formation Name, Formation Top, Formation Base, Completion Information. Rows 1 and 2.

UNDER PENALTY OF PERJURY I HEREBY ATTEST THAT THE INFORMATION CONTAINED HEREIN IS TRUE AND CORRECT TO THE BEST OF MY KNOWLEDGE

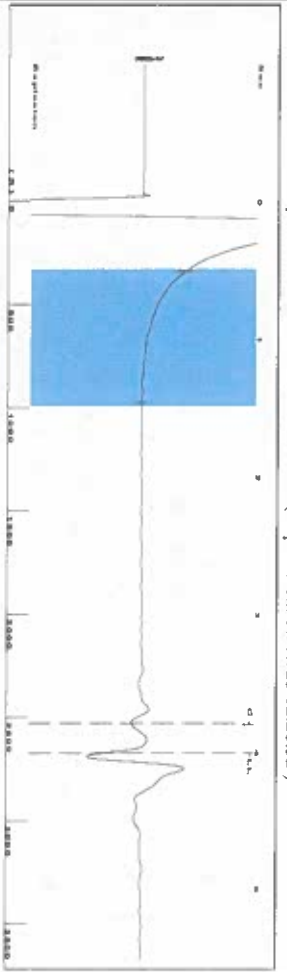
Submitted Electronically

Do NOT Write in This Space - KCC USE ONLY
Date Tested: Results: Date Plugged: Date Repaired: Date Put Back in Service:
Review Completed by: Comments:
TA Approved: Yes Denied Date:

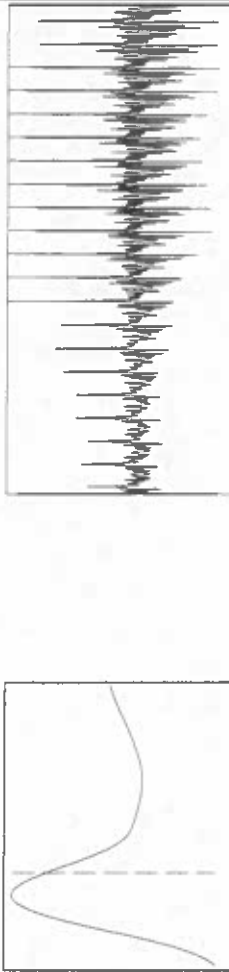
Mail to the Appropriate KCC Conservation Office:

Table with 3 columns: District Office #, Address, Phone. Rows 1-4.

Group: SUBLETTE Well: Watson C-2 (acquired on: 07/19/23 12:26:52)



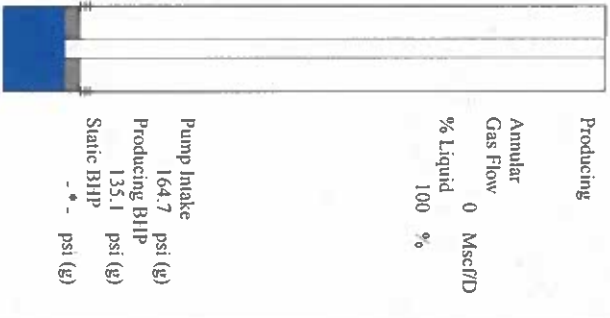
Filter Type High Pass Automatic Collar Count Yes
 Manual Acoustic Velo 133.59 ft/s Manual JTS/sec 20.8768
 Time 4.015 sec
 Joints 84.3104 JIS
 Depth 2672.64 ft



Analysis Method: Automatic

Group: SUBLETTE Well: Watson C-2 (acquired on: 07/19/23 12:26:52)

Production	Potential	Casing Pressure	Producing
Current	BBL/D	126.4 psi (g)	Liquid Intake
Oil	BBL/D	Casing Pressure Buildup	164.7 psi (g)
Water	Mscf/D	-0.0 psi	Producing BHP
Gas	Mscf/D	1.00 min	135.1 psi (g)
JPR Method	Vogel	Gas/Liquid Interface Pressure	Static BHP
PBH/PSBHP	-*-	135.2 psi (g)	-* - psi (g)
Production Efficiency	0.0	Liquid Level Depth	
		2672.64 ft	
Oil	deg API	Pump Intake Depth	
Water	Sp.Gr:H2O	2761.00 ft	
Gas	Sp.Gr:AIR	Formation Depth	
		2640.00 ft	
Acoustic Velocity	ft/s		
	1331.33 ft/s		
Formation Submergence			
Total Gaseous Liquid Column HT (TVD)	88 ft		
Equivalent Gas Free Liquid HT (TVD)	88 ft		



Group: SUBLETTE Well: Watson C-2 (acquired on: 07/19/23 12:26:52)



Change in Pressure -0.03 psi
 Change in Time 1.00 min
 PT16716
 Range 0 - ? psi

Group: SUBLETTE Well: Watson C-2 (acquired on: 07/19/23 12:26:52)



Acoustic Velocity 1331.33 ft/s
 Joints Per Second 20.9989 JIS/sec
 Depth to liquid level 2672.64 ft
 Automatic Collar Count Yes
 Joints counted 74
 Joints to liquid level 84.3104
 Filler Width 18.8768
 Time to 1st Collar 0.276
 22.8768
 3.8

July 20, 2023

Katherine McClurkan
Merit Energy Company, LLC
13727 Noel Road, Suite 1200
Dallas, TX 75240-7362

Re: Temporary Abandonment
API 15-081-21698-00-01
Watson C 2
NE/4 Sec.22-30S-32W
Haskell County, Kansas

Dear Katherine McClurkan:

"Your temporary abandonment (TA) application for the well listed above has been approved. In accordance with K.A.R. 82-3-111 the TA status of this well will expire 07/20/2024.

- * If you return this well to service or plug it, please notify the District Office.
- * If you sell this well you are required to file a Transfer of Operator form, T-1.
- * If the well will remain temporarily abandoned, you must submit a new TA application, CP-111, before 07/20/2024.

You may contact me at the number above if you have questions.

Very truly yours,

Michael Maier"