

KANSAS CORPORATION COMMISSION
OIL & GAS CONSERVATION DIVISION

TEMPORARY ABANDONMENT WELL APPLICATION

OPERATOR: License#
Name:
Address 1:
Address 2:
City: State: Zip:
Contact Person:
Phone:
Contact Person Email:
Field Contact Person:
Field Contact Person Phone:

API No. 15-
Spot Description:
Sec. Twp. S. R.
GPS Location: Lat: Long:
Datum: NAD27 NAD83 WGS84
County: Elevation:
Lease Name: Well #:
Well Type: Oil Gas OG WSW Other:
SWD Permit #: ENHR Permit #:
Gas Storage Permit #:
Spud Date: Date Shut-In:

Table with 7 columns: Conductor, Surface, Production, Intermediate, Liner, Tubing. Rows include Size, Setting Depth, Amount of Cement, Top of Cement, Bottom of Cement.

Casing Fluid Level from Surface: How Determined? Date:
Casing Squeeze(s): to w / sacks of cement, to w / sacks of cement. Date:
Do you have a valid Oil & Gas Lease? Yes No
Depth and Type: Junk in Hole at Tools in Hole at Casing Leaks: Yes No Depth of casing leak(s):
Type Completion: ALT. I ALT. II Depth of: DV Tool: w / sacks of cement Port Collar: w / sack of cement
Packer Type: Size: Inch Set at: Feet
Total Depth: Plug Back Depth: Plug Back Method:

Geological Data:

Table with 4 columns: Formation Name, Formation Top, Formation Base, Completion Information. Rows 1 and 2.

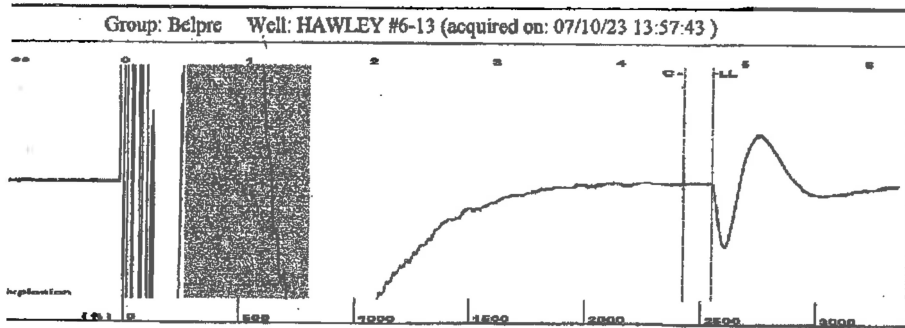
UNDER PENALTY OF PERJURY I HEREBY ATTEST THAT THE INFORMATION CONTAINED HEREIN IS TRUE AND CORRECT TO THE BEST OF MY KNOWLEDGE

Submitted Electronically

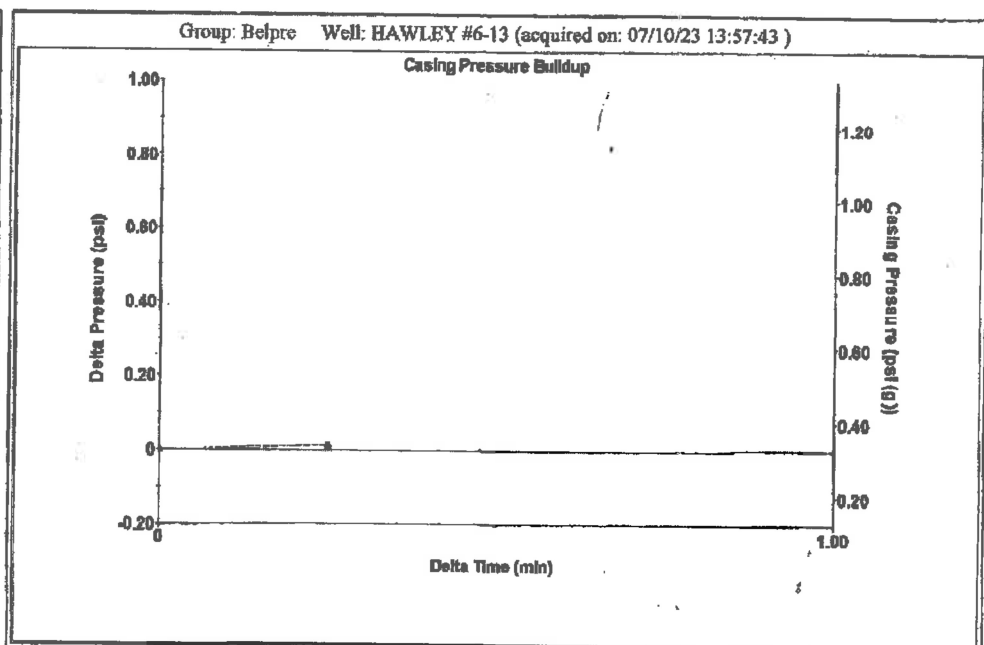
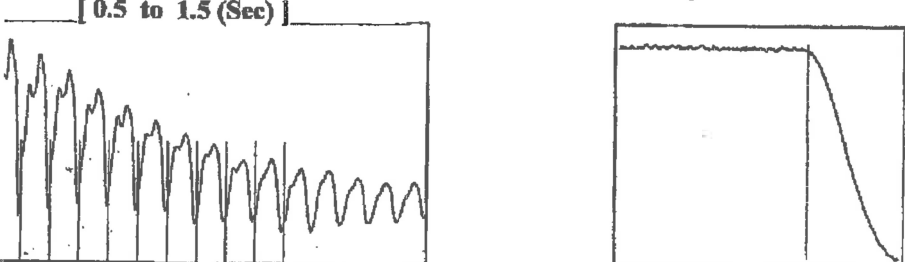
Do NOT Write in This Space - KCC USE ONLY
Date Tested: Results: Date Plugged: Date Repaired: Date Put Back in Service:
Review Completed by: Comments:
TA Approved: Yes Denied Date:

Mail to the Appropriate KCC Conservation Office:

Table with 2 columns: Office Address, Phone. Rows for District Office #1, #2, #3, #4.



Type High Pass Automatic Collar Count Yes Time 4.743 sec
 Acoustic Velocity 1035.45 ft/s Manual JTS/sec 16.7224 Joints 82.2811 Jts
 Depth 2547.42 ft

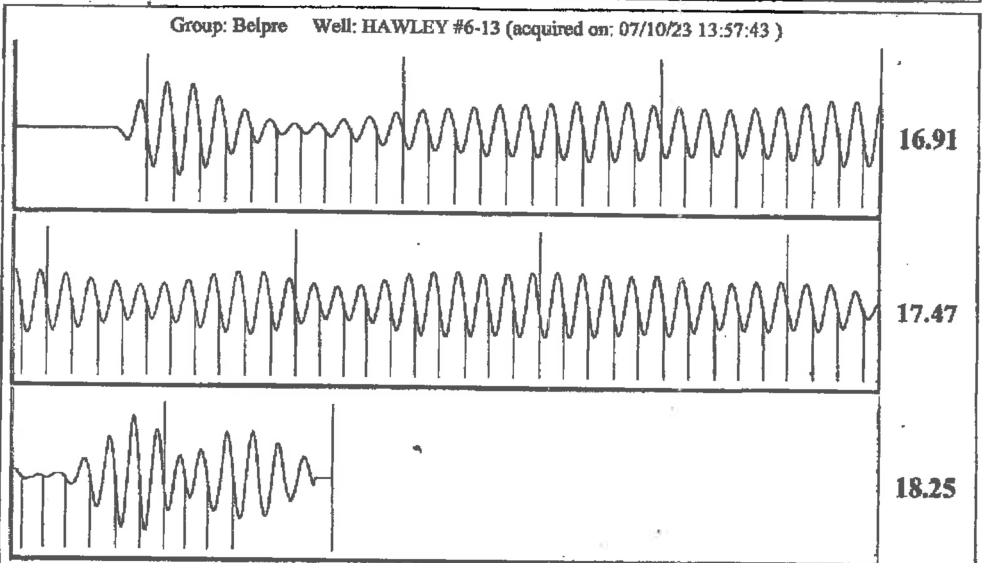


Change in Pressure 0.01 psi PT13440
 Range 0-7 psi
 Change in Time 0.25 min

Analysis Method: Automatic

Group: Belpre Well: HAWLEY #6-13 (acquired on: 07/10/23 13:57:43)

Potential - * - BBL/D - * - BBL/D - * - Mscf/D Method %SBHP Section Efficiency 40 deg API 1.05 Sp.Gr.H2O 0.91 Sp.Gr.AIR Acoustic Velocity 1074.18 ft/s Section Submergence Gaseous Liquid Column HT (TVD) 1757 ft Equivalent Gas Free Liquid HT (TVD) 1701 ft Section Test	Casing Pressure 0.3 psi (g) Casing Pressure Buildup 0.0 psi 0.25 min Gas/Liquid Interface Pressure 1.6 psi (g) Liquid Level Depth 2547.42 ft Pump Intake Depth 4304.00 ft Formation Depth 4332.00 ft Pump Intake 572.2 psi (g) Producing BHP 584.7 psi (g) Static BHP - * - psi (g)	Producing Annular Gas Flow 1 Mscf/D % Liquid 97 %
--	--	---



Acoustic Velocity	1074.18 ft/s	Joints counted	73
Joints Per Second	17.3479 jts/sec	Joints to liquid level	82.2811
Depth to liquid level	2547.42 ft	Filter Width	14.7224 18.7224
Automatic Collar Count	Yes	Time to 1st Collar	0.304 4.512

July 20, 2023

Loveness Mpanje
F. G. Holl Company L.L.C.
9431 E CENTRAL STE 100
WICHITA, KS 67206-2563

Re: Temporary Abandonment
API 15-047-21077-00-00
HAWLEY 6-13
NE/4 Sec.13-24S-17W
Edwards County, Kansas

Dear Loveness Mpanje:

Your application for Temporary Abandonment (TA) for the above-listed well is denied for the following reasons(s):

Shut-in Over 10 years

Pursuant to K.A.R. 82-3-111, the well must be plugged, or returned to service, or obtain temporary abandonment status by 08/19/2023.

This deadline does NOT override any compliance deadline given to you in any Commission Order.

You may contact me if you have any questions.

Sincerely,
Michael Maier
KCC DISTRICT 1