

KANSAS CORPORATION COMMISSION
OIL & GAS CONSERVATION DIVISION

TEMPORARY ABANDONMENT WELL APPLICATION

OPERATOR: License#
Name:
Address 1:
Address 2:
City: State: Zip:
Contact Person:
Phone:
Contact Person Email:
Field Contact Person:
Field Contact Person Phone:

API No. 15-
Spot Description:
Sec. Twp. S. R.
GPS Location: Lat: Long:
Datum: NAD27 NAD83 WGS84
County: Elevation:
Lease Name: Well #:
Well Type: Oil Gas OG WSW Other:
SWD Permit #: ENHR Permit #:
Gas Storage Permit #:
Spud Date: Date Shut-In:

Table with 7 columns: Conductor, Surface, Production, Intermediate, Liner, Tubing. Rows include Size, Setting Depth, Amount of Cement, Top of Cement, Bottom of Cement.

Casing Fluid Level from Surface: How Determined? Date:
Casing Squeeze(s): to w / sacks of cement, to w / sacks of cement. Date:
Do you have a valid Oil & Gas Lease? Yes No
Depth and Type: Junk in Hole at Tools in Hole at Casing Leaks: Yes No Depth of casing leak(s):
Type Completion: ALT. I ALT. II Depth of: DV Tool: w / sacks of cement Port Collar: w / sack of cement
Packer Type: Size: Inch Set at: Feet
Total Depth: Plug Back Depth: Plug Back Method:

Geological Date:

Table with 4 columns: Formation Name, Formation Top, Formation Base, Completion Information. Rows 1 and 2.

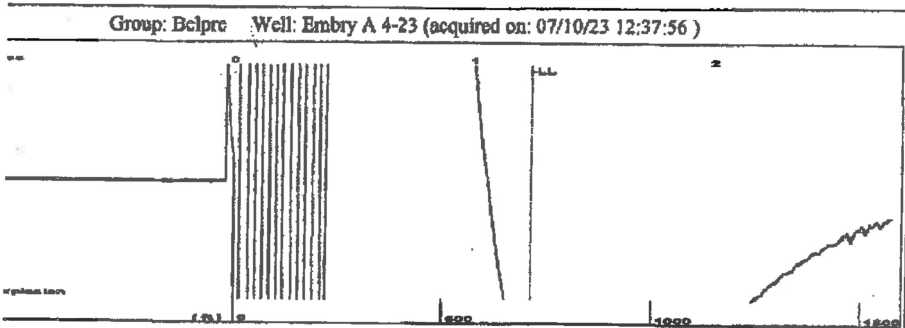
UNDER PENALTY OF PERJURY I HEREBY ATTEST THAT THE INFORMATION CONTAINED HEREIN IS TRUE AND CORRECT TO THE BEST OF MY KNOWLEDGE

Submitted Electronically

Do NOT Write in This Space - KCC USE ONLY
Date Tested: Results: Date Plugged: Date Repaired: Date Put Back in Service:
Review Completed by: Comments:
TA Approved: Yes Denied Date:

Mail to the Appropriate KCC Conservation Office:

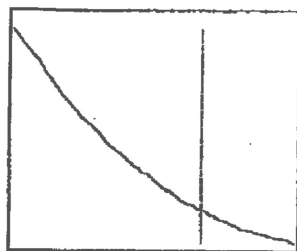
Table with 3 columns: District Office #, Address, Phone. Rows 1-4.



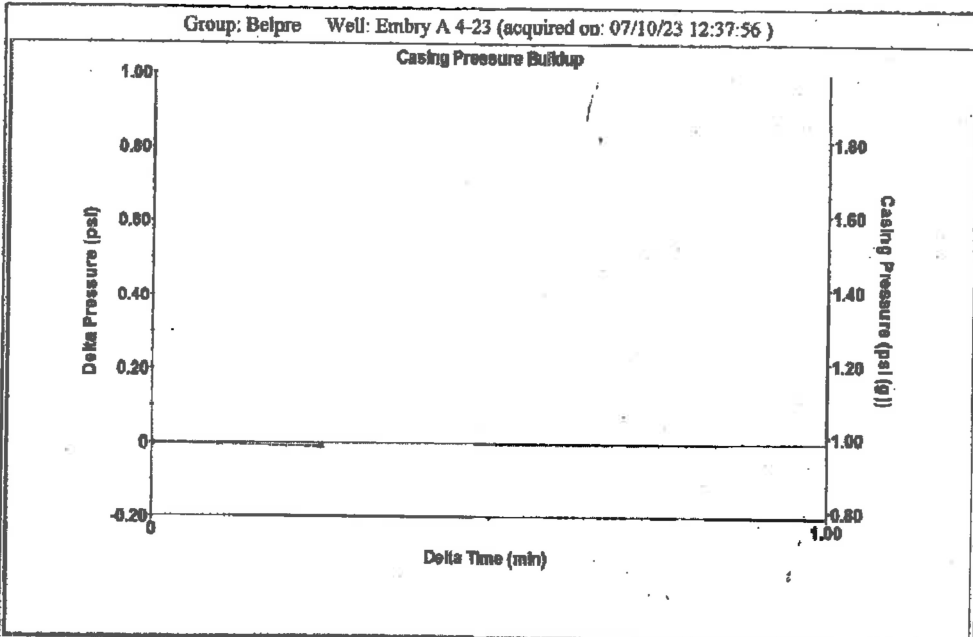
Time 1.237 sec
 Joints 22.2761 Its
 Depth 711.28 ft

Liquid level calculated with user supplied Acoustic Velocity

Acoustic Velocity 1150 ft/s



Analysis Method: Acoustic Velocity



Change in Pressure -0.01 psi PT13440
 Range 0 - ? psi
 Change in Time 0.25 min

Group: Belpre Well: Embry A 4-23 (acquired on: 07/10/23 12:37:56)

Production	Potential	Casing Pressure	Producing
Current	- * - BBL/D	1.0 psi (g)	
	- * - BBL/D	Casing Pressure Buildup	
	- * - Mscf/D	-0.0 psi	Annular Gas Flow
		0.25 min	0 Mscf/D
Method	Vogel	Gas/Liquid Interface Pressure	% Liquid
1/SBHP	- * -	1.3 psi (g)	100 %
Production Efficiency	0.0	Liquid Level Depth	
		711.28 ft	
		Pump Intake Depth	
		3992.00 ft	
		Formation Depth	
		3785.00 ft	
Acoustic Velocity	1150 ft/s		
		Pump Intake	
		1075.9 psi (g)	
		Producing BHP	
		1012.6 psi (g)	
		Static BHP	
		- * - psi (g)	

40 deg API
 1.05 Sp.Gr.H2O
 0.85 Sp.Gr.AIR

Production Submergence
 Gaseous Liquid Column HT (TVD) 3281 ft
 Gaseous Free Liquid HT (TVD) 3281 ft

Production Test

Group: Belpre Well: Embry A 4-23 (acquired on: 07/10/23 12:37:56)

Entered Acoustic Velocity for Liquid Level depth determination

July 20, 2023

Loveness Mpanje
F. G. Holl Company L.L.C.
9431 E CENTRAL STE 100
WICHITA, KS 67206-2563

Re: Temporary Abandonment
API 15-047-20944-00-00
EMBRY - A 4-23
NW/4 Sec.23-24S-16W
Edwards County, Kansas

Dear Loveness Mpanje:

"Your temporary abandonment (TA) application for the well listed above has been approved. In accordance with K.A.R. 82-3-111 the TA status of this well will expire 07/20/2024.

- * If you return this well to service or plug it, please notify the District Office.
- * If you sell this well you are required to file a Transfer of Operator form, T-1.
- * If the well will remain temporarily abandoned, you must submit a new TA application, CP-111, before 07/20/2024.

You may contact me at the number above if you have questions.

Very truly yours,

Michael Maier"