

KANSAS CORPORATION COMMISSION
OIL & GAS CONSERVATION DIVISION

TEMPORARY ABANDONMENT WELL APPLICATION

OPERATOR: License# _____
 Name: _____
 Address 1: _____
 Address 2: _____
 City: _____ State: _____ Zip: _____ + _____
 Contact Person: _____
 Phone: (_____) _____
 Contact Person Email: _____
 Field Contact Person: _____
 Field Contact Person Phone: (_____) _____

API No. 15- _____
 Spot Description: _____
 _____ - _____ - _____ - _____ Sec. _____ Twp. _____ S. R. _____ E W
 _____ feet from N / S Line of Section
 _____ feet from E / W Line of Section
 GPS Location: Lat: _____, Long: _____
(e.g. xx.xxxxx) (e.g. -xxx.xxxxx)
 Datum: NAD27 NAD83 WGS84
 County: _____ Elevation: _____ GL KB
 Lease Name: _____ Well #: _____
 Well Type: (check one) Oil Gas OG WSW Other: _____
 SWD Permit #: _____ ENHR Permit #: _____
 Gas Storage Permit #: _____
 Spud Date: _____ Date Shut-In: _____

	Conductor	Surface	Production	Intermediate	Liner	Tubing
Size						
Setting Depth						
Amount of Cement						
Top of Cement						
Bottom of Cement						

Casing Fluid Level from Surface: _____ How Determined? _____ Date: _____
 Casing Squeeze(s): _____ to _____ w / _____ sacks of cement, _____ to _____ w / _____ sacks of cement. Date: _____
(top) (bottom) (top) (bottom)
 Do you have a valid Oil & Gas Lease? Yes No
 Depth and Type: Junk in Hole at _____ Tools in Hole at _____ Casing Leaks: Yes No Depth of casing leak(s): _____
(depth) (depth)
 Type Completion: ALT. I ALT. II Depth of: DV Tool: _____ w / _____ sacks of cement Port Collar: _____ w / _____ sack of cement
(depth) (depth)
 Packer Type: _____ Size: _____ Inch Set at: _____ Feet
 Total Depth: _____ Plug Back Depth: _____ Plug Back Method: _____

Geological Data:

Formation Name	Formation Top	Formation Base	Completion Information
1. _____	At: _____	to _____ Feet	Perforation Interval _____ to _____ Feet or Open Hole Interval _____ to _____ Feet
2. _____	At: _____	to _____ Feet	Perforation Interval _____ to _____ Feet or Open Hole Interval _____ to _____ Feet

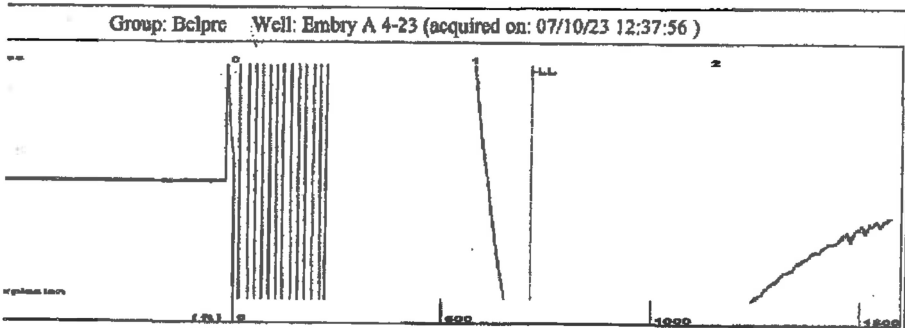
UNDER PENALTY OF PERJURY I HEREBY ATTEST THAT THE INFORMATION CONTAINED HEREIN IS TRUE AND CORRECT TO THE BEST OF MY KNOWLEDGE

Submitted Electronically

Do NOT Write in This Space - KCC USE ONLY	Date Tested: _____	Results: _____	Date Plugged: _____	Date Repaired: _____	Date Put Back in Service: _____
	Review Completed by: _____ Comments: _____				
TA Approved: <input type="checkbox"/> Yes <input type="checkbox"/> Denied Date: _____					

Mail to the Appropriate KCC Conservation Office:

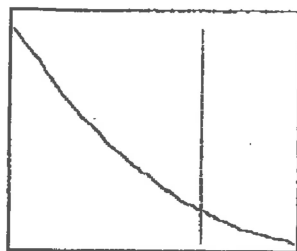
	KCC District Office #1 - 210 E. Frontview, Suite A, Dodge City, KS 67801	Phone 620.682.7933
	KCC District Office #2 - 3450 N. Rock Road, Building 600, Suite 601, Wichita, KS 67226	Phone 316.337.7400
	KCC District Office #3 - 137 E. 21st St., Chanute, KS 66720	Phone 620.902.6450
	KCC District Office #4 - 2301 E. 13th Street, Hays, KS 67601-2651	Phone 785.261.6250



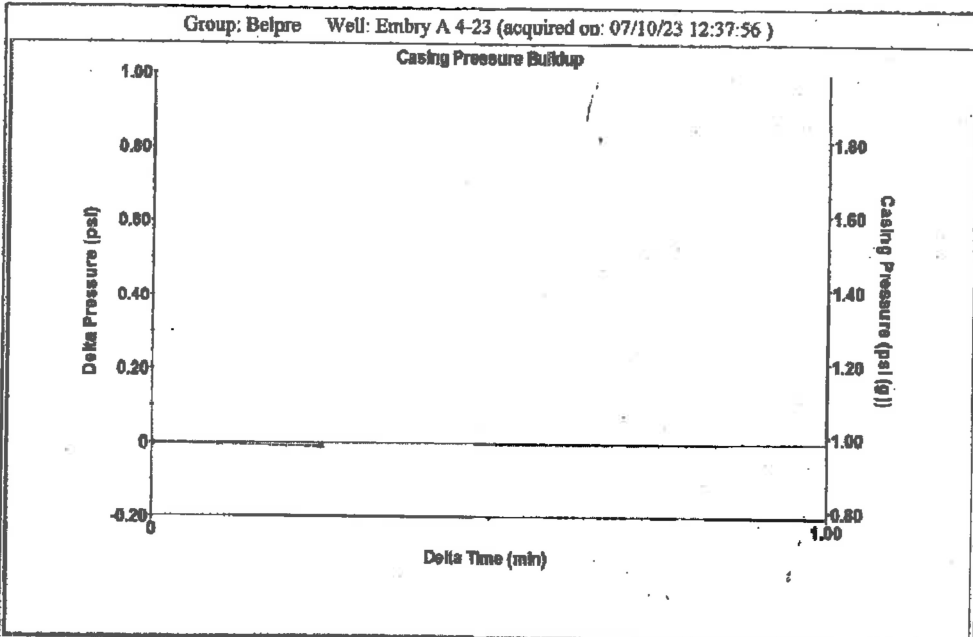
Time 1.237 sec
 Joints 22.2761 Its
 Depth 711.28 ft

Liquid level calculated with user supplied Acoustic Velocity

Acoustic Velocity 1150 ft/s



Analysis Method: Acoustic Velocity



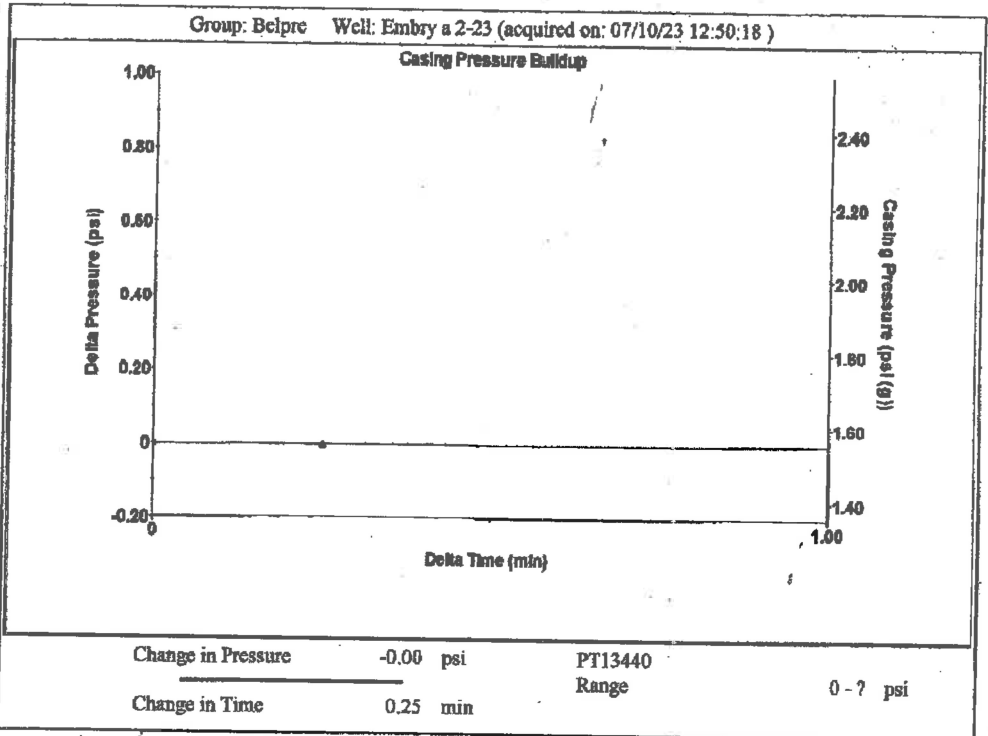
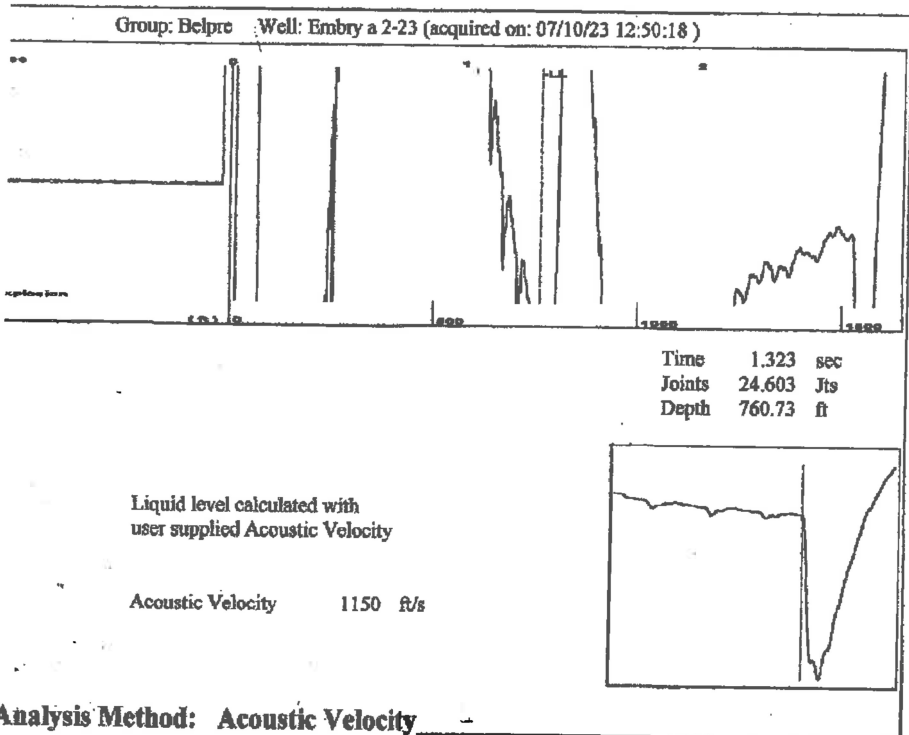
Change in Pressure -0.01 psi PT13440
 Range 0 - ? psi
 Change in Time 0.25 min

Group: Belpre Well: Embry A 4-23 (acquired on: 07/10/23 12:37:56)

Production	Potential	Casing Pressure	Producing
Current	-*- BBL/D	1.0 psi (g)	
	-*- BBL/D	Casing Pressure Buildup	
	-*- Mscf/D	-0.0 psi	Annular
		0.25 min	Gas Flow
Method	Vogel	Gas/Liquid Interface Pressure	0 Mscf/D
W/BHP	-*-	1.3 psi (g)	% Liquid
Production Efficiency	0.0		100 %
40 deg API		Liquid Level Depth	
1.05 Sp.Gr.H2O		711.28 ft	
0.85 Sp.Gr.AIR		Pump Intake Depth	
		3992.00 ft	
Acoustic Velocity	1150 ft/s	Formation Depth	
		3785.00 ft	
Production Submergence		Pump Intake	
Gaseous Liquid Column HT (TVD)	3281 ft	1075.9 psi (g)	
Equivalent Gas Free Liquid HT (TVD)	3281 ft	Producing BHP	
		1012.6 psi (g)	
		Static BHP	
		-*- psi (g)	

Group: Belpre Well: Embry A 4-23 (acquired on: 07/10/23 12:37:56)

Entered Acoustic Velocity for Liquid Level depth determination



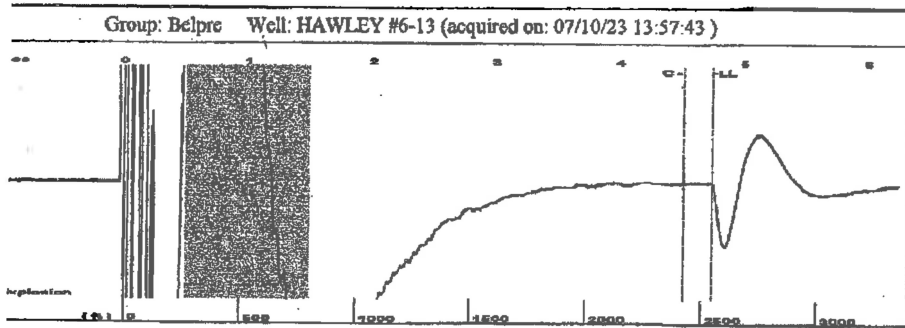
Analysis Method: Acoustic Velocity

Group: Belpre Well: Embry a 2-23 (acquired on: 07/10/23 12:50:18)

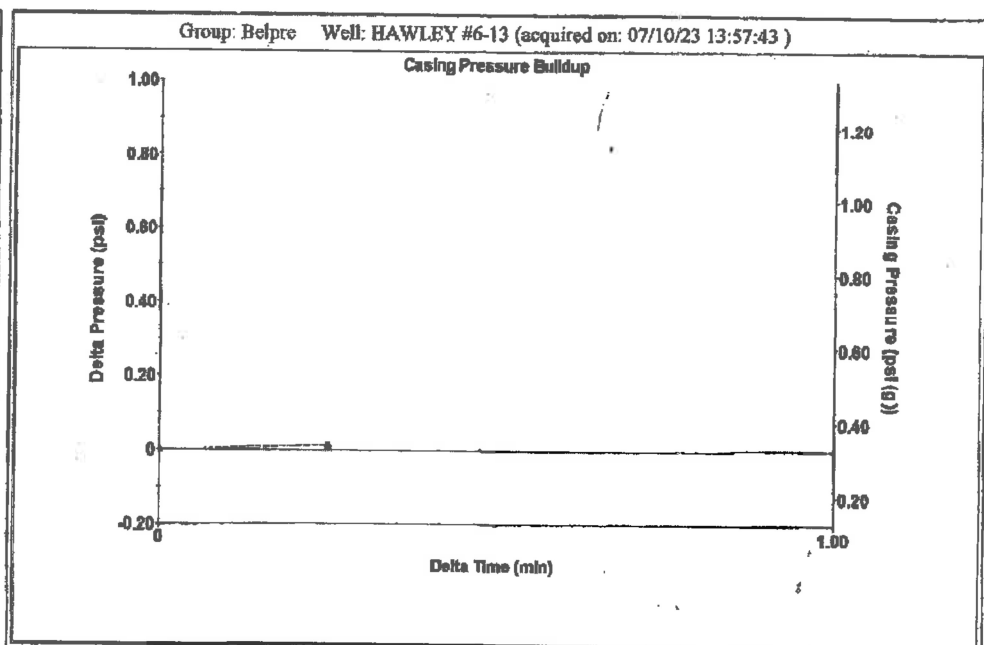
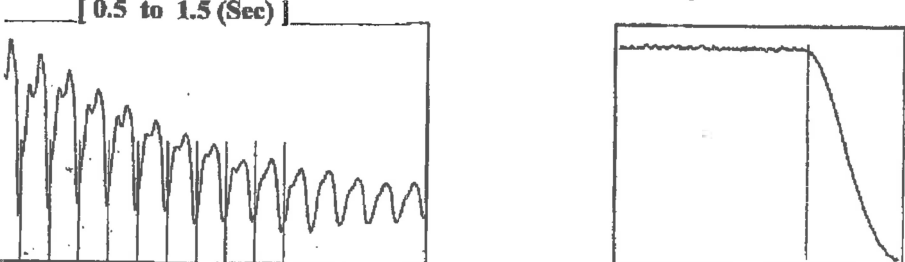
Condition	Potential	Casing Pressure	Producing
Current	-*- BBL/D	1.6 psi (g)	
	-*- BBL/D	Casing Pressure Buildup	Annular Gas Flow
	-*- Mscf/D	-0.0 psi	0 Mscf/D
		0.25 min	% Liquid
Method	Vogel	Gas/Liquid Interface Pressure	100 %
1/3 BHP	-*-	1.9 psi (g)	
Production Efficiency	0.0		
		Liquid Level Depth	
40 deg API		760.73 ft	
1.05 Sp.Gr.H2O		Pump Intake Depth	
0.85 Sp.Gr.AIR		3804.00 ft	
Acoustic Velocity	1150 ft/s	Formation Depth	
		3784.00 ft	
Production Submergence			
Gaseous Liquid Column HT (TVD)	3043 ft	Pump Intake	1003.4 psi (g)
Residual Gas Free Liquid HT (TVD)	3043 ft	Producing BHP	997.3 psi (g)
Static Test		Static BHP	-*- psi (g)

Group: Belpre Well: Embry a 2-23 (acquired on: 07/10/23 12:50:18)

Entered Acoustic Velocity for Liquid Level depth determination



Type High Pass Automatic Collar Count Yes Time 4.743 sec
 Acoustic Velocity 1035.45 ft/s Manual JTS/sec 16.7224 Joints 82.2811 Jts
 Depth 2547.42 ft

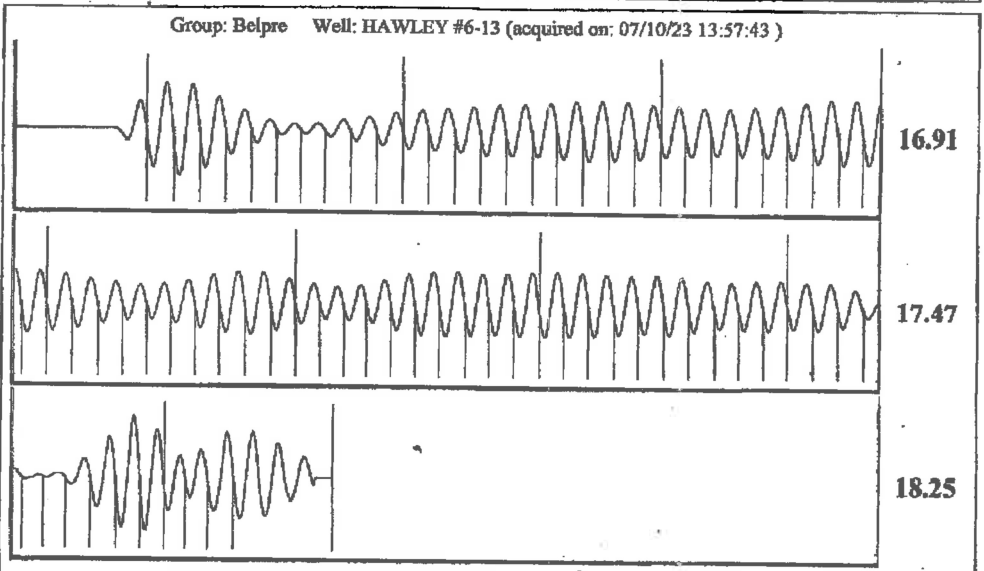


Change in Pressure 0.01 psi PT13440
 Change in Time 0.25 min Range 0-? psi

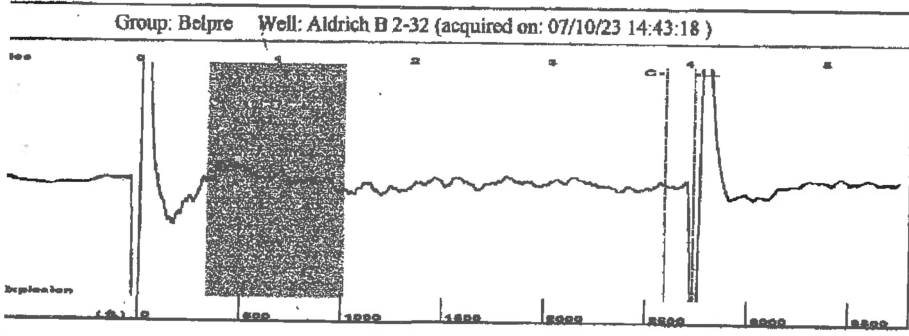
Analysis Method: Automatic

Group: Belpre Well: HAWLEY #6-13 (acquired on: 07/10/23 13:57:43)

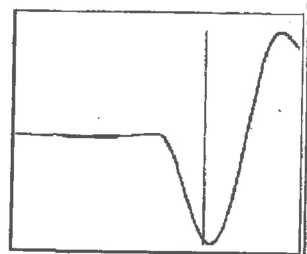
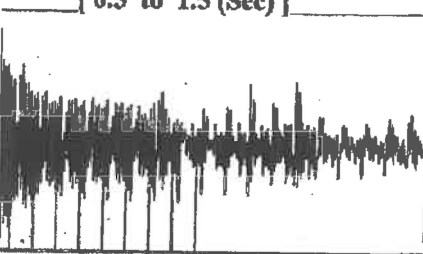
Potential - * - BBL/D - * - BBL/D - * - Mscf/D Method %SBHP Section Efficiency 40 deg API 1.05 Sp.Gr.H2O 0.91 Sp.Gr.AIR Acoustic Velocity 1074.18 ft/s	Casing Pressure 0.3 psi (g) Casing Pressure Buildup 0.0 psi 0.25 min Gas/Liquid Interface Pressure 1.6 psi (g) Liquid Level Depth 2547.42 ft Pump Intake Depth 4304.00 ft Formation Depth 4332.00 ft	Producing Annular Gas Flow 1 Mscf/D % Liquid 97 % Pump Intake 572.2 psi (g) Producing BHP 584.7 psi (g) Static BHP - * - psi (g)
--	--	---



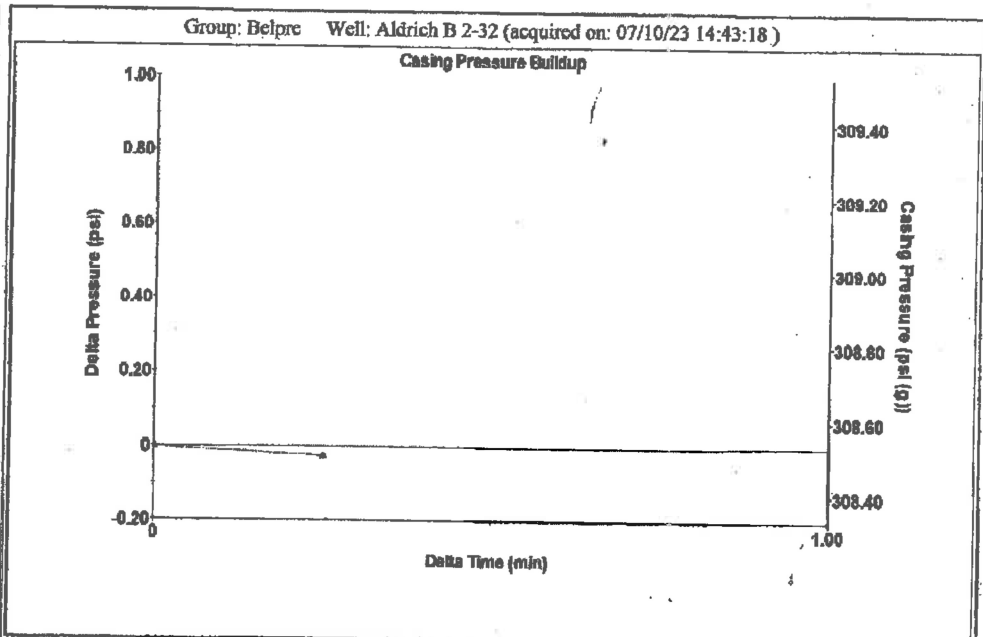
Acoustic Velocity	1074.18 ft/s	Joints counted	73
Joints Per Second	17.3479 jts/sec	Joints to liquid level	82.2811
Depth to liquid level	2547.42 ft	Filter Width	14.7224 18.7224
Automatic Collar Count	Yes	Time to 1st Collar	0.304 4.512



Type High Pass Automatic Collar Count Yes Time 4.04 sec
 Acoustic Velocity 1343.22 ft/s Manual JTS/sec 21.1864 Joints 86.2472 Jts
 Depth 2734.04 ft



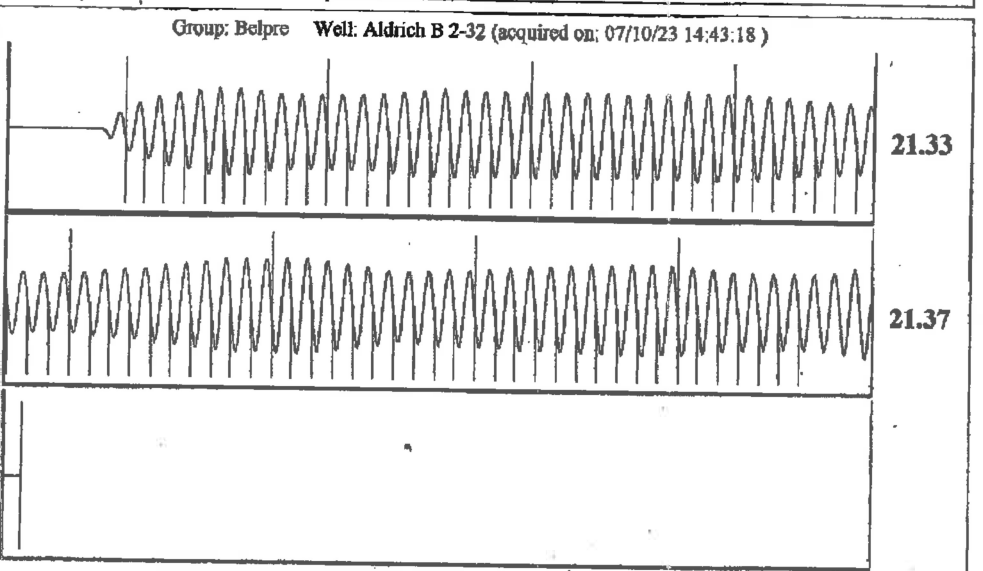
Analysis Method: Automatic



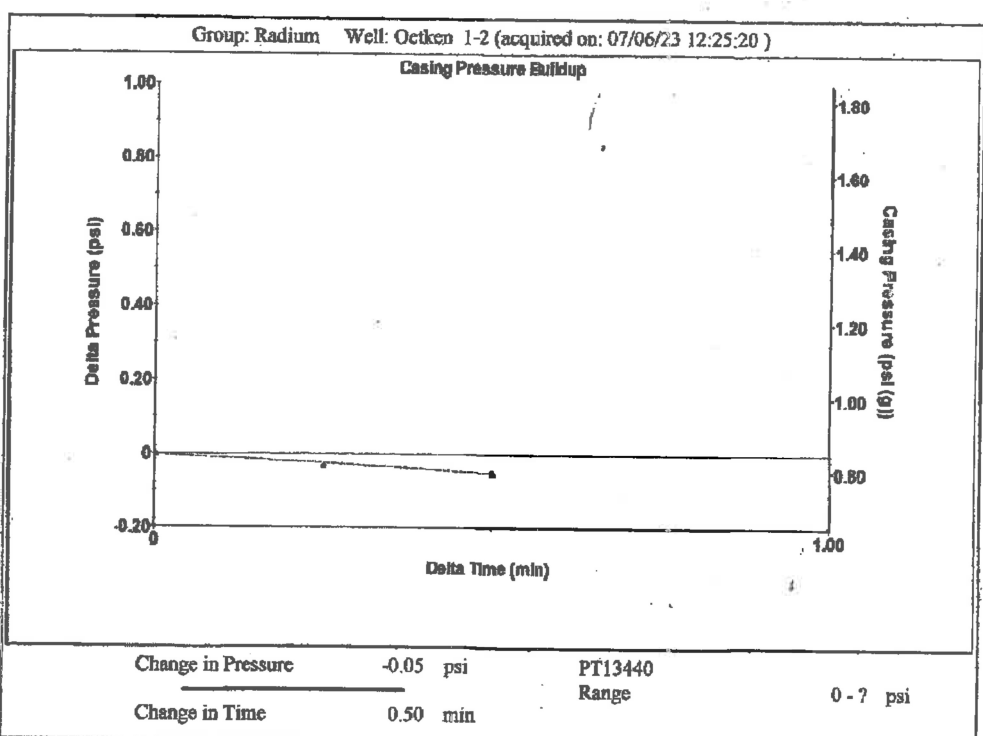
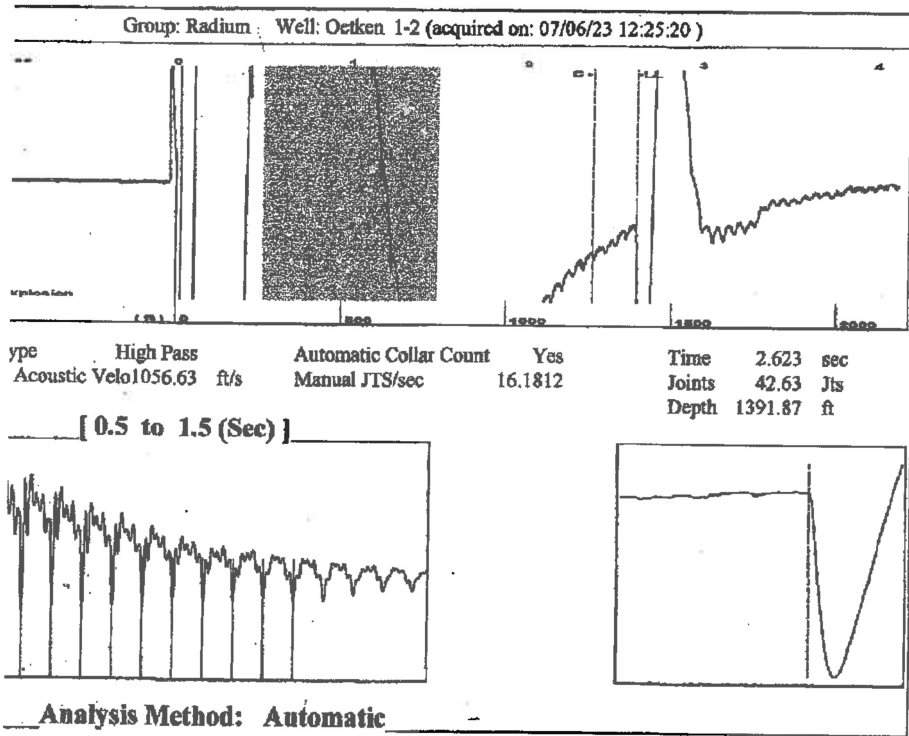
Change in Pressure -0.03 psi PT13440
 Change in Time 0.25 min Range 0 - 7 psi

Group: Belpre Well: Aldrich B 2-32 (acquired on: 07/10/23 14:43:18)

Action Current Potential -*- BBL/D -*- BBL/D -*- Mscf/D	Method P/SBHP Action Efficiency 40 deg.API r 1.05 Sp.Gr.H2O 0.62 Sp.Gr.AIR	Casing Pressure 308.5 psi (g) Casing Pressure Buildup -0.0 psi 0.25 min Gas/Liquid Interface Pressure 328.7 psi (g) Liquid Level Depth 2734.04 ft Pump Intake Depth -*- ft Formation Depth 4308.00 ft	Producing Annular Gas Flow 0 Mscf/D % Liquid 100 % Pump Intake -*- psi (g) Producing BHP 1044.3 psi (g) Static BHP -*- psi (g)
---	--	---	---



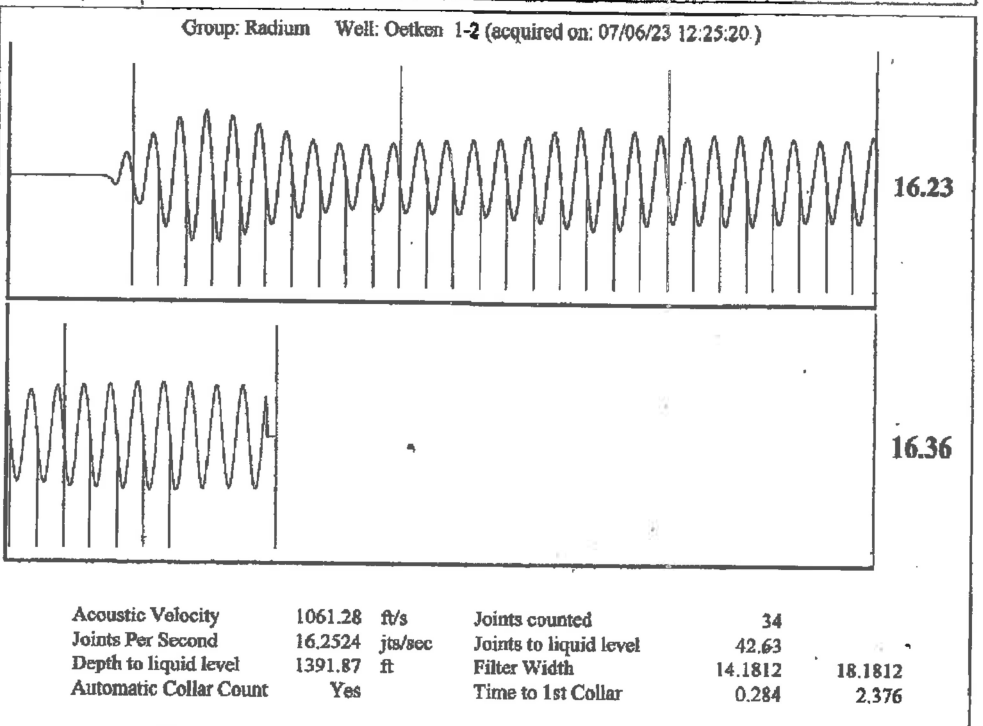
Acoustic Velocity	1353.48 ft/s	Joints counted	76
Joints Per Second	21.3483 jts/sec	Joints to liquid level	86.2472
Depth to liquid level	2734.04 ft	Filter Width	19.1864
Automatic Collar Count	Yes	Time to 1st Collar	0.272



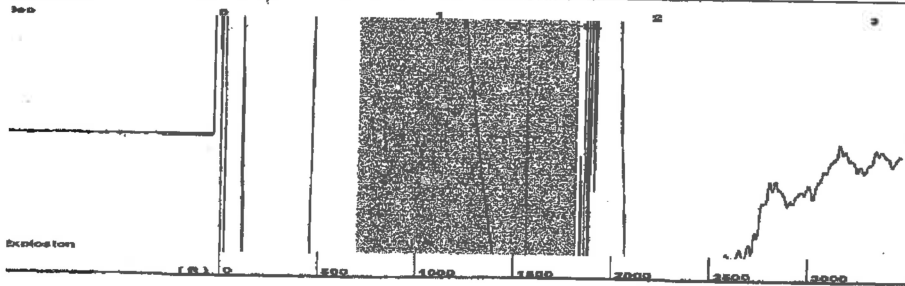
Group: Radium Well: Oetken 1-2 (acquired on: 07/06/23 12:25:20)

Current Potential	-* BBL/D	Casing Pressure	0.8 psi (g)	Producing
-*	-* BBL/D	Casing Pressure Buildup	-0.1 psi	Annular Gas Flow
-*	-* Mscf/D	0.50 min	0 Mscf/D	% Liquid
Method	Vogel	Gas/Liquid Interface Pressure	1.5 psi (g)	100 %
%SBHP	-*	Liquid Level Depth	1391.87 ft	
Collar Efficiency	0.0	Pump Intake Depth	3650.00 ft	
40 deg API		Formation Depth	3697.00 ft	
1.05 Sp.Gr.H2O				
0.91 Sp.Gr.AIR				
Acoustic Velocity	1061.28 ft/s			
Position Submergence				
Gaseous Liquid Column HT (TVD)	2258 ft			
Equivalent Gas Free Liquid HT (TVD)	2258 ft			
Acoustic Test				

Pump Intake	753.5 psi (g)
Producing BHP	774.8 psi (g)
Static BHP	-* psi (g)

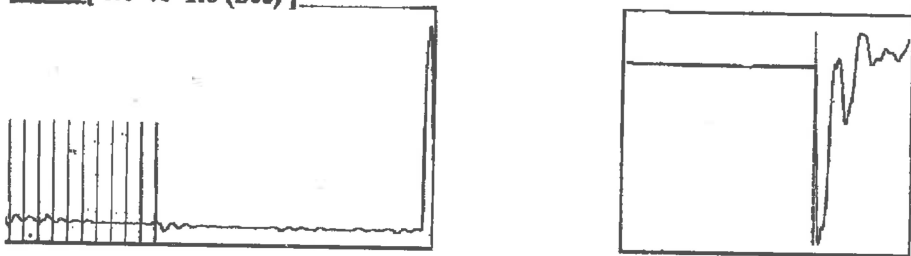


Group: Radium Well: Foster Trust A 1-1 (acquired on: 07/12/23 12:28:51)



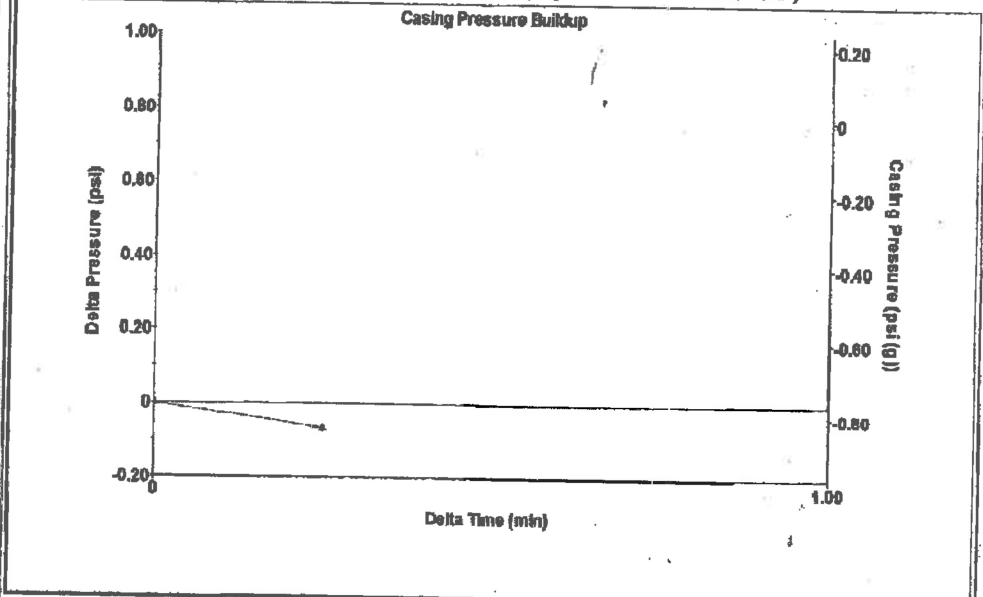
Type High Pass Automatic Collar Count Yes Time 1.637 sec
 Acoustic Velocity 2166.67 ft/s Manual JTS/sec 33.3333 Joints 55.7195 Jts
 Depth 1810.88 ft

[0.6 to 1.6 (Sec)]



Analysis Method: Automatic

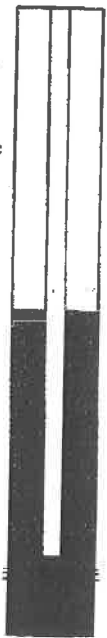
Group: Radium Well: Foster Trust A 1-1 (acquired on: 07/12/23 12:28:51)



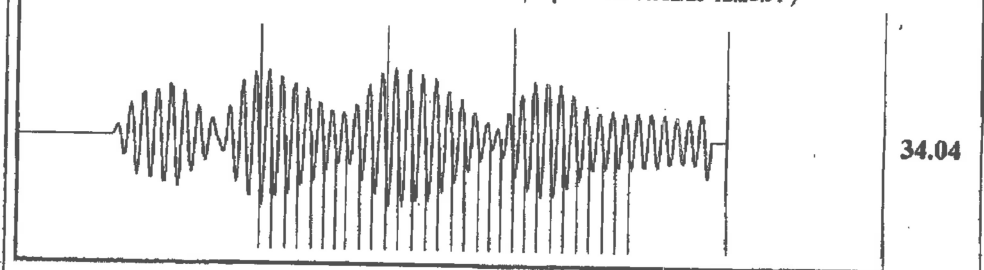
Change in Pressure -0.07 psi PT13440
 Change in Time 0.25 min Range 0 - 7 psi

Group: Radium Well: Foster Trust A 1-1 (acquired on: 07/12/23 12:28:51)

Action Current Potential BBL/D BBL/D Mscf/D Method P/SBHP Action Efficiency 40 deg API 1.05 Sp.Gr.H2O 0.55 Sp.Gr.AIR Acoustic Velocity 2212.44 ft/s Pump Intake Submergence Gaseous Liquid Column HT (TVD) 1829 ft Gaseous Free Liquid HT (TVD) 1829 ft Acoustic Test	Casing Pressure -0.8 psi (g) Casing Pressure Buildup -0.1 psi 0.25 min Gas/Liquid Interface Pressure -0.3 psi (g) Liquid Level Depth 1810.88 ft Pump Intake Depth 3640.00 ft Formation Depth 3778.00 ft Pump Intake 609.0 psi (g) Producing BHP 671.7 psi (g) Static BHP -** psi (g)	Producing Annular Gas Flow 0 Mscf/D % Liquid 100 %
--	--	--



Group: Radium Well: Foster Trust A 1-1 (acquired on: 07/12/23 12:28:51)



Acoustic Velocity 2212.44 ft/s Joints counted 29
 Joints Per Second 34.0376 jts/sec Joints to liquid level 55.7195
 Depth to liquid level 1810.88 ft Filter Width 31.3333 35.3333
 Automatic Collar Count Yes Time to 1st Collar 0.56 1.412

July 20, 2023

Loveness Mpanje
F. G. Holl Company L.L.C.
9431 E CENTRAL STE 100
WICHITA, KS 67206-2563

Re: Temporary Abandonment
API 15-145-21756-00-01
FOSTER TRUST 'A' 1-1
NE/4 Sec.01-21S-16W
Pawnee County, Kansas

Dear Loveness Mpanje:

"Your temporary abandonment (TA) application for the well listed above has been approved. In accordance with K.A.R. 82-3-111 the TA status of this well will expire 07/20/2024.

- * If you return this well to service or plug it, please notify the District Office.
- * If you sell this well you are required to file a Transfer of Operator form, T-1.
- * If the well will remain temporarily abandoned, you must submit a new TA application, CP-111, before 07/20/2024.

You may contact me at the number above if you have questions.

Very truly yours,

Michael Maier"