

KANSAS CORPORATION COMMISSION
OIL & GAS CONSERVATION DIVISION

TEMPORARY ABANDONMENT WELL APPLICATION

OPERATOR: License#
Name:
Address 1:
Address 2:
City: State: Zip:
Contact Person:
Phone:
Contact Person Email:
Field Contact Person:
Field Contact Person Phone:

API No. 15-
Spot Description:
Sec. Twp. S. R.
feet from N / S Line of Section
feet from E / W Line of Section
GPS Location: Lat: , Long:
Datum: NAD27 NAD83 WGS84
County: Elevation: GL KB
Lease Name: Well #:
Well Type: Oil Gas OG WSW Other:
SWD Permit #: ENHR Permit #:
Gas Storage Permit #:
Spud Date: Date Shut-In:

Table with 7 columns: Conductor, Surface, Production, Intermediate, Liner, Tubing. Rows include Size, Setting Depth, Amount of Cement, Top of Cement, Bottom of Cement.

Casing Fluid Level from Surface: How Determined? Date:
Casing Squeeze(s): to w / sacks of cement, to w / sacks of cement. Date:
Do you have a valid Oil & Gas Lease? Yes No
Depth and Type: Junk in Hole at Tools in Hole at Casing Leaks: Yes No Depth of casing leak(s):
Type Completion: ALT. I ALT. II Depth of: DV Tool: w / sacks of cement Port Collar: w / sack of cement
Packer Type: Size: Inch Set at: Feet
Total Depth: Plug Back Depth: Plug Back Method:

Geological Data:

Table with 4 columns: Formation Name, Formation Top, Formation Base, Completion Information. Rows 1 and 2.

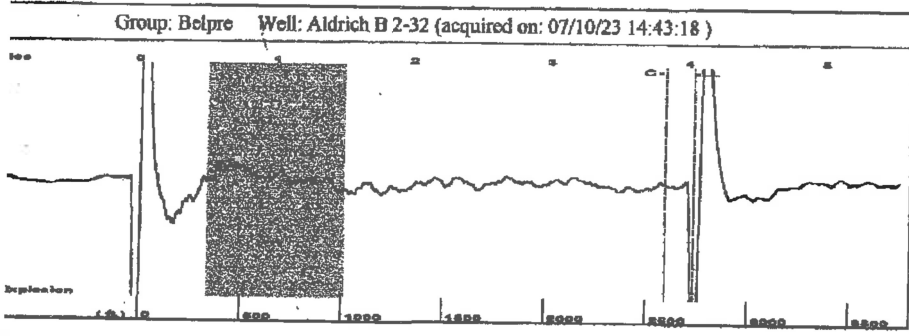
UNDER PENALTY OF PERJURY I HEREBY ATTEST THAT THE INFORMATION CONTAINED HEREIN IS TRUE AND CORRECT TO THE BEST OF MY KNOWLEDGE

Submitted Electronically

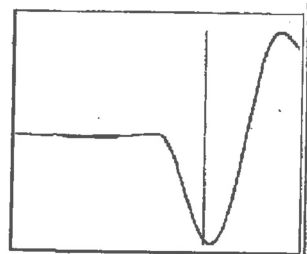
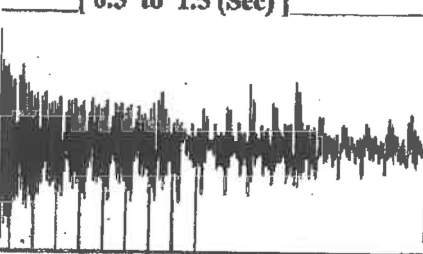
Do NOT Write in This Space - KCC USE ONLY
Date Tested: Results: Date Plugged: Date Repaired: Date Put Back in Service:
Review Completed by: Comments:
TA Approved: Yes Denied Date:

Mail to the Appropriate KCC Conservation Office:

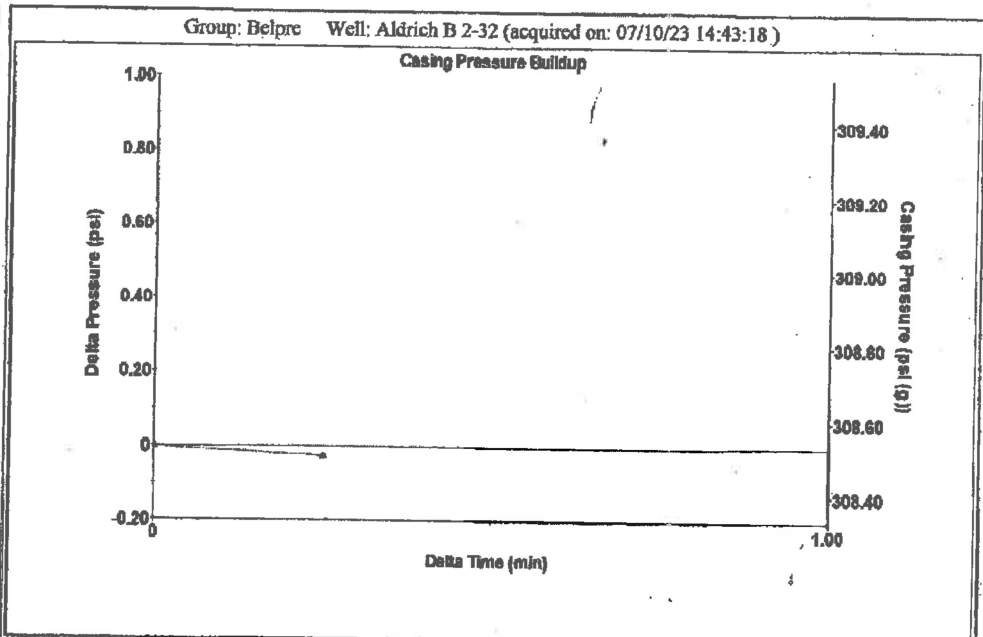
Table with 3 columns: District Office, Address, Phone. Rows for District Office #1, #2, #3, #4.



Type High Pass Automatic Collar Count Yes Time 4.04 sec
 Acoustic Velocity 1343.22 ft/s Manual JTS/sec 21.1864 Joints 86.2472 Jts
 Depth 2734.04 ft



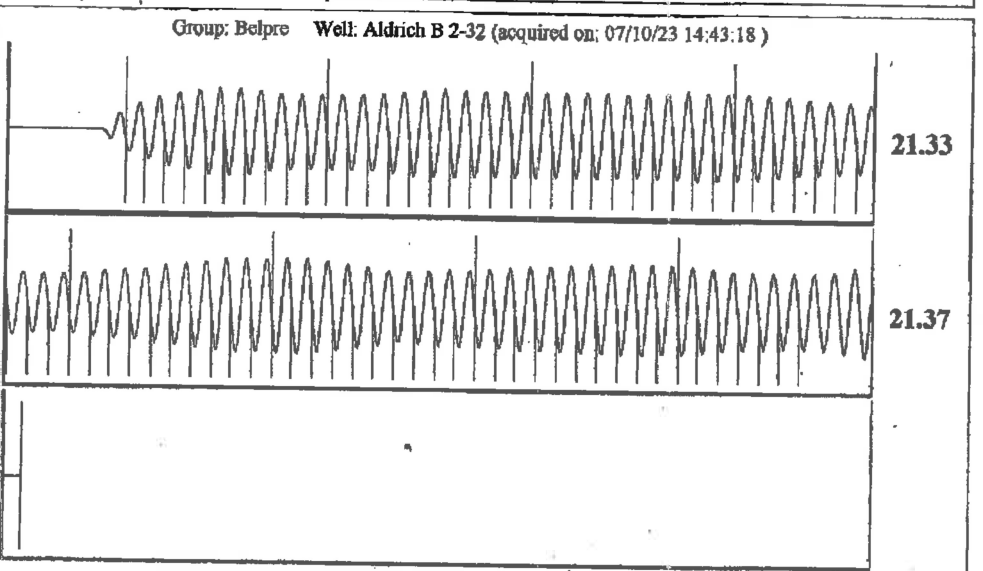
Analysis Method: Automatic



Change in Pressure -0.03 psi PT13440
 Change in Time 0.25 min Range 0 - 7 psi

Group: Belpre Well: Aldrich B 2-32 (acquired on: 07/10/23 14:43:18)

Action Current Potential -*- BBL/D -*- BBL/D -*- Mscf/D	Method P/SBHP Action Efficiency 40 deg.API r 1.05 Sp.Gr.H2O 0.62 Sp.Gr.AIR	Casing Pressure 308.5 psi (g) Casing Pressure Buildup -0.0 psi 0.25 min Gas/Liquid Interface Pressure 328.7 psi (g) Liquid Level Depth 2734.04 ft Pump Intake Depth -*- ft Formation Depth 4308.00 ft	Producing Annular Gas Flow 0 Mscf/D % Liquid 100 % Pump Intake -*- psi (g) Producing BHP 1044.3 psi (g) Static BHP -*- psi (g)
---	--	---	---



Acoustic Velocity	1353.48 ft/s	Joints counted	76
Joints Per Second	21.3483 jts/sec	Joints to liquid level	86.2472
Depth to liquid level	2734.04 ft	Filter Width	19.1864
Automatic Collar Count	Yes	Time to 1st Collar	0.272

July 20, 2023

Loveness Mpanje
F. G. Holl Company L.L.C.
9431 E CENTRAL STE 100
WICHITA, KS 67206-2563

Re: Temporary Abandonment
API 15-145-21283-00-00
ALDRICH B 2-32
NE/4 Sec.32-23S-17W
Pawnee County, Kansas

Dear Loveness Mpanje:

"Your temporary abandonment (TA) application for the well listed above has been approved. In accordance with K.A.R. 82-3-111 the TA status of this well will expire 07/20/2024.

- * If you return this well to service or plug it, please notify the District Office.
- * If you sell this well you are required to file a Transfer of Operator form, T-1.
- * If the well will remain temporarily abandoned, you must submit a new TA application, CP-111, before 07/20/2024.

You may contact me at the number above if you have questions.

Very truly yours,

Michael Maier"