

KANSAS CORPORATION COMMISSION
OIL & GAS CONSERVATION DIVISION

TEMPORARY ABANDONMENT WELL APPLICATION

OPERATOR: License#
Name:
Address 1:
Address 2:
City: State: Zip:
Contact Person:
Phone:
Contact Person Email:
Field Contact Person:
Field Contact Person Phone:

API No. 15-
Spot Description:
Sec. Twp. S. R.
GPS Location: Lat: Long:
Datum: NAD27 NAD83 WGS84
County: Elevation:
Lease Name: Well #:
Well Type: Oil Gas OG WSW Other:
SWD Permit #: ENHR Permit #:
Gas Storage Permit #:
Spud Date: Date Shut-In:

Table with 7 columns: Conductor, Surface, Production, Intermediate, Liner, Tubing. Rows include Size, Setting Depth, Amount of Cement, Top of Cement, Bottom of Cement.

Casing Fluid Level from Surface: How Determined? Date:
Casing Squeeze(s): to w / sacks of cement, to w / sacks of cement. Date:
Do you have a valid Oil & Gas Lease? Yes No
Depth and Type: Junk in Hole at Tools in Hole at Casing Leaks: Yes No Depth of casing leak(s):
Type Completion: ALT. I ALT. II Depth of: DV Tool: w / sacks of cement Port Collar: w / sack of cement
Packer Type: Size: Inch Set at: Feet
Total Depth: Plug Back Depth: Plug Back Method:

Geological Data:

Table with 4 columns: Formation Name, Formation Top, Formation Base, Completion Information. Rows 1 and 2.

UNDER PENALTY OF PERJURY I HEREBY ATTEST THAT THE INFORMATION CONTAINED HEREIN IS TRUE AND CORRECT TO THE BEST OF MY KNOWLEDGE

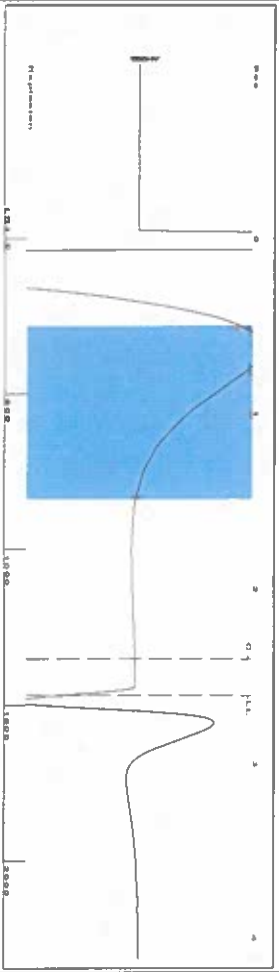
Submitted Electronically

Do NOT Write in This Space - KCC USE ONLY
Date Tested: Results: Date Plugged: Date Repaired: Date Put Back in Service:
Review Completed by: Comments:
TA Approved: Yes Denied Date:

Mail to the Appropriate KCC Conservation Office:

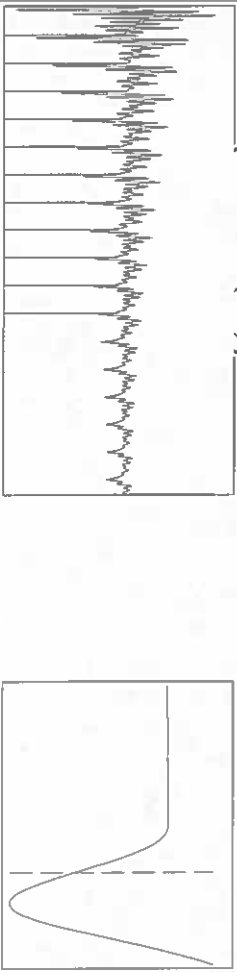
Table with 2 columns: Office Address, Phone. Rows for District Office #1, #2, #3, #4.

Group: Ulysses East Well: Moody E-1 (acquired on: 07/20/23 10:27:48)



Filter Type High Pass Automatic Collar Count Yes  
 Manual Acoustic Velocity 112.28 ft/s Manual JTS/sec 17.5439  
 Time 2.612 sec  
 Joints 46.3669 Jts  
 Depth 1469.83 ft

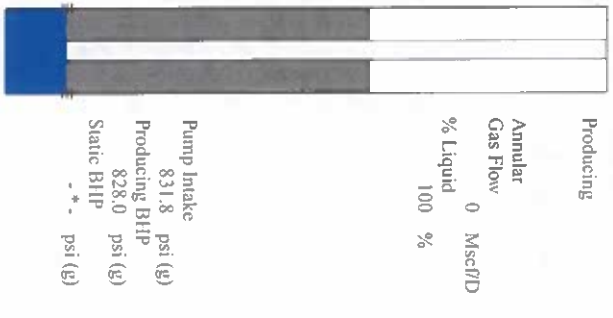
[0.5 to 1.5 (Sec) 1]



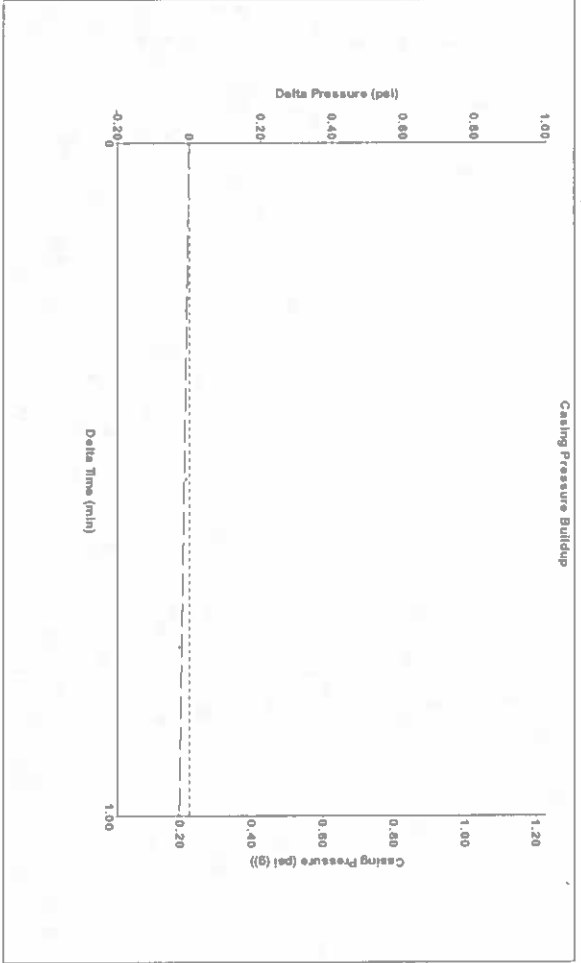
Analysis Method: Automatic

Group: Ulysses East Well: Moody E-1 (acquired on: 07/20/23 10:27:48)

Production Current	Potential	Casing Pressure	Producing
Oil -*-	-*- BBL/D	0.2 psi (g)	Annular Gas Flow 0 Mscf/D
Water -*-	-*- BBL/D	Casing Pressure Buildup -0.028 psi	% Liquid 100 %
Gas -*-	-*- Mscf/D	1.00 min	
IPR Method PBHP/SBHP	Vogel -*-	Gas/Liquid Interface Pressure 0.9 psi (g)	
Production Efficiency 0.0		Liquid Level Depth 1469.83 ft	
Oil 40 deg API		Pump Intake Depth 3975.00 ft	
Water 1.05 Sp.Gr.H2O		Formation Depth 3963.00 ft	
Gas 0.85 Sp.Gr.AIR			
Acoustic Velocity 1125.44 ft/s			
Formation Submergence			
Total Gaseous Liquid Column HIT (TVD) 2505 ft			
Equivalent Gas Free Liquid HIT (TVD) 2505 ft			
7/20/23			

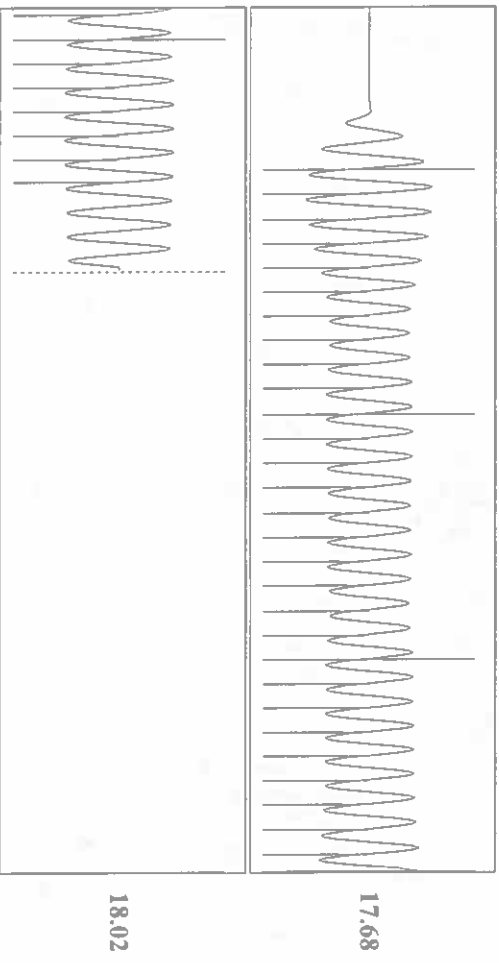


Group: Ulysses East Well: Moody E-1 (acquired on: 07/20/23 10:27:48)



Change in Pressure -0.03 psi PT16716  
 Change in Time 1.00 min Range 0 - ? psi

Group: Ulysses East Well: Moody E-1 (acquired on: 07/20/23 10:27:48)



Acoustic Velocity 1125.44 ft/s Joints counted 36  
 Joints Per Second 17.7515 jts/sec Joints to liquid level 46.3669  
 Depth to liquid level 1469.83 ft Filter Width 15.5439  
 Automatic Collar Count Yes Time to 1st Collar 0.376 2.404

July 20, 2023

Katherine McClurkan  
Merit Energy Company, LLC  
13727 Noel Road, Suite 1200  
Dallas, TX 75240

Re: Temporary Abandonment  
API 15-081-21993-00-00  
Moody E 1  
NW/4 Sec.14-27S-34W  
Haskell County, Kansas

Dear Katherine McClurkan:

"Your temporary abandonment (TA) application for the well listed above has been approved. In accordance with K.A.R. 82-3-111 the TA status of this well will expire 03/06/2024.

- \* If you return this well to service or plug it, please notify the District Office.
- \* If you sell this well you are required to file a Transfer of Operator form, T-1.
- \* If the well will remain temporarily abandoned, you must submit a new TA application, CP-111, before 03/06/2024.

You may contact me at the number above if you have questions.

Very truly yours,

Michael Maier"