

KANSAS CORPORATION COMMISSION
OIL & GAS CONSERVATION DIVISION

TEMPORARY ABANDONMENT WELL APPLICATION

OPERATOR: License#
Name:
Address 1:
Address 2:
City: State: Zip:
Contact Person:
Phone:
Contact Person Email:
Field Contact Person:
Field Contact Person Phone:

API No. 15-
Spot Description:
Sec. Twp. S. R.
feet from N / S Line of Section
feet from E / W Line of Section
GPS Location: Lat: , Long:
Datum: NAD27 NAD83 WGS84
County: Elevation: GL KB
Lease Name: Well #:
Well Type: Oil Gas OG WSW Other:
SWD Permit #: ENHR Permit #:
Gas Storage Permit #:
Spud Date: Date Shut-In:

Table with 7 columns: Conductor, Surface, Production, Intermediate, Liner, Tubing. Rows include Size, Setting Depth, Amount of Cement, Top of Cement, Bottom of Cement.

Casing Fluid Level from Surface: How Determined? Date:
Casing Squeeze(s): to w / sacks of cement, to w / sacks of cement. Date:
Do you have a valid Oil & Gas Lease? Yes No
Depth and Type: Junk in Hole at Tools in Hole at Casing Leaks: Yes No Depth of casing leak(s):
Type Completion: ALT. I ALT. II Depth of: DV Tool: w / sacks of cement Port Collar: w / sack of cement
Packer Type: Size: Inch Set at: Feet
Total Depth: Plug Back Depth: Plug Back Method:

Geological Data:

Table with 4 columns: Formation Name, Formation Top, Formation Base, Completion Information. Rows 1 and 2.

UNDER PENALTY OF PERJURY I HEREBY ATTEST THAT THE INFORMATION CONTAINED HEREIN IS TRUE AND CORRECT TO THE BEST OF MY KNOWLEDGE

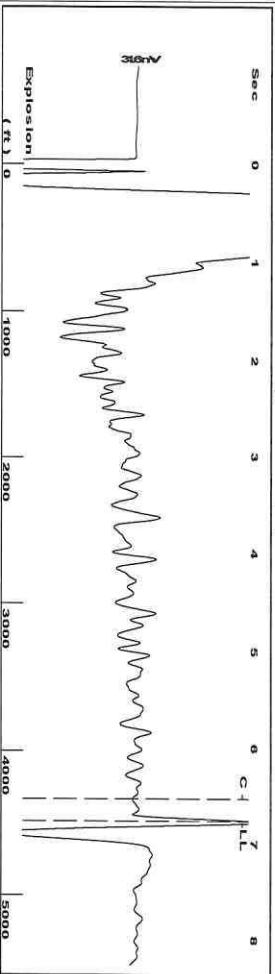
Submitted Electronically

Do NOT Write in This Space - KCC USE ONLY
Date Tested: Results: Date Plugged: Date Repaired: Date Put Back in Service:
Review Completed by: Comments:
TA Approved: Yes Denied Date:

Mail to the Appropriate KCC Conservation Office:

Table with 3 columns: District Office, Address, Phone. Rows for District Office #1, #2, #3, #4.

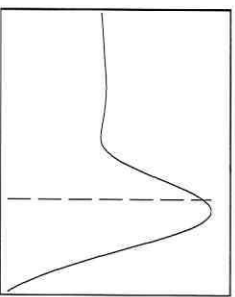
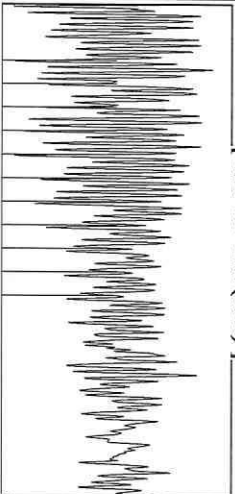
Group: Atlas Well: Boggs estate 3-9 (acquired on: 06/27/23 13:29:11)



Filter Type High Pass  
Manual Acoustic Velo 1331.93 ft/s  
Automatic Collar Count Yes  
Manual JTS/sec 21.0084

Time 6.762 sec  
Joints 141.505 Jts  
Depth 4485.71 ft

1.5 to 2.5 (Sec) 1



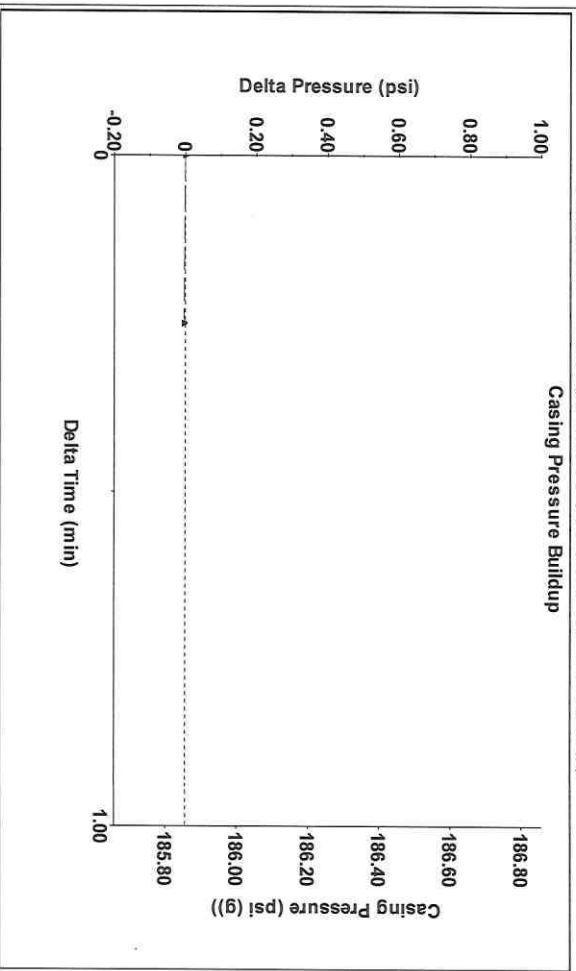
Analysis Method: Automatic

Group: Atlas Well: Boggs estate 3-9 (acquired on: 06/27/23 13:29:11)

Production Current	Potential	Casing Pressure	Static
Oil - *-	- *- BBL/D	185.9 psi (g)	Oil Column Height
Water - *-	- *- BBL/D	-0.0 psi	MD 0 ft
Gas - *-	- *- Misc/D	0.25 min	Water Column Height
IPR Method	Vogel	Gas/Liquid Interface Pressure	
PBHP/SBHP	- *-	207.4 psi (g)	
Production Efficiency	0.0		
Oil 40 deg API		Liquid Level Depth	
Water 1.05 Sp.Gr.H2O		4485.71 ft	
Gas 0.67 Sp.Gr.AIR		Pump Intake Depth	
Acoustic Velocity		- *- ft	
		Formation Depth	
		4425.00 ft	
		Static BHP	
		207.1 psi (g)	

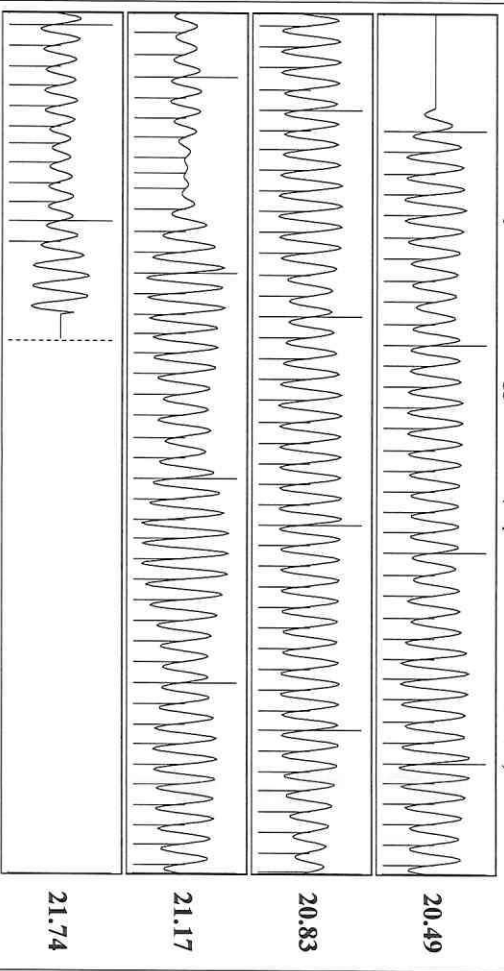


Group: Atlas Well: Boggs estate 3-9 (acquired on: 06/27/23 13:29:11)



Change in Pressure -0.00 psi PT4212  
Change in Time 0.25 min Range 0 - ? psi

Group: Atlas Well: Boggs estate 3-9 (acquired on: 06/27/23 13:29:11)



Acoustic Velocity	1326.74 ft/s	Joints counted	131
Joints Per Second	20.9265 jts/sec	Joints to liquid level	141.505
Depth to liquid level	4485.71 ft	Filter Width	19.0084
Automatic Collar Count	Yes	Time to 1st Collar	0.272

July 24, 2023

Saumyadeep Halder  
Atlas Operating LLC  
1900 ST JAMES PLACE SUITE 800  
HOUSTON, TX 77056-4133

Re: Temporary Abandonment  
API 15-007-22445-00-00  
BOGGS ESTATE 3-9  
SW/4 Sec.09-33S-12W  
Barber County, Kansas

Dear Saumyadeep Halder:

"Your temporary abandonment (TA) application for the well listed above has been approved. In accordance with K.A.R. 82-3-111 the TA status of this well will expire 07/24/2024.

- \* If you return this well to service or plug it, please notify the District Office.
- \* If you sell this well you are required to file a Transfer of Operator form, T-1.
- \* If the well will remain temporarily abandoned, you must submit a new TA application, CP-111, before 07/24/2024.

You may contact me at the number above if you have questions.

Very truly yours,

Michael Maier"