

KANSAS CORPORATION COMMISSION
OIL & GAS CONSERVATION DIVISION

TEMPORARY ABANDONMENT WELL APPLICATION

OPERATOR: License#
Name:
Address 1:
Address 2:
City: State: Zip:
Contact Person:
Phone:
Contact Person Email:
Field Contact Person:
Field Contact Person Phone:

API No. 15-
Spot Description:
Sec. Twp. S. R.
GPS Location: Lat: Long:
Datum: NAD27 NAD83 WGS84
County: Elevation:
Lease Name: Well #:
Well Type: Oil Gas OG WSW Other:
SWD Permit #: ENHR Permit #:
Gas Storage Permit #:
Spud Date: Date Shut-In:

Table with 7 columns: Conductor, Surface, Production, Intermediate, Liner, Tubing. Rows include Size, Setting Depth, Amount of Cement, Top of Cement, Bottom of Cement.

Casing Fluid Level from Surface: How Determined? Date:
Casing Squeeze(s): to w / sacks of cement, to w / sacks of cement. Date:
Do you have a valid Oil & Gas Lease? Yes No
Depth and Type: Junk in Hole at Tools in Hole at Casing Leaks: Yes No Depth of casing leak(s):
Type Completion: ALT. I ALT. II Depth of: DV Tool: w / sacks of cement Port Collar: w / sack of cement
Packer Type: Size: Inch Set at: Feet
Total Depth: Plug Back Depth: Plug Back Method:

Geological Data:

Table with 4 columns: Formation Name, Formation Top, Formation Base, Completion Information. Rows 1 and 2.

UNDER PENALTY OF PERJURY I HEREBY ATTEST THAT THE INFORMATION CONTAINED HEREIN IS TRUE AND CORRECT TO THE BEST OF MY KNOWLEDGE

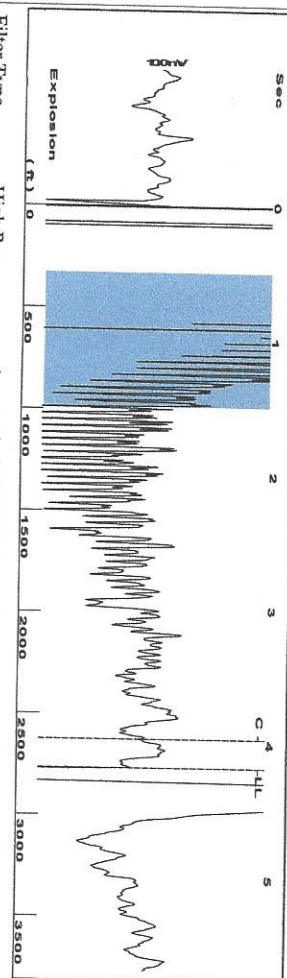
Submitted Electronically

Do NOT Write in This Space - KCC USE ONLY
Date Tested: Results: Date Plugged: Date Repaired: Date Put Back in Service:
Review Completed by: Comments:
TA Approved: Yes Denied Date:

Mail to the Appropriate KCC Conservation Office:

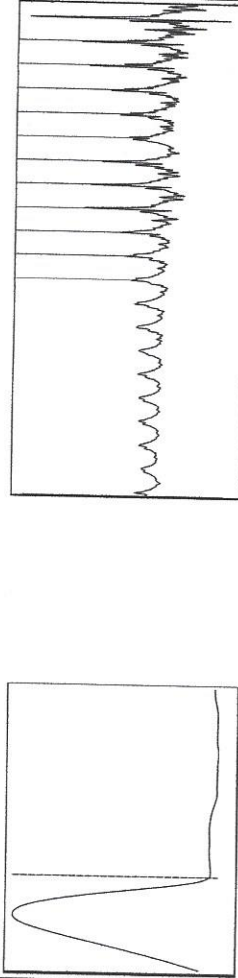
Table with 2 columns: Office Address, Phone. Rows for District Office #1, #2, #3, #4.

Group: McGinness Energy Well: VGM (acquired on: 07/14/23 13:15:49)



Filter Type High Pass Automatic Collar Count Yes
 Manual Acoustic Velo 1315.35 ft/s Manual JTS/sec 20.7469
 Time 4.177 sec
 Joints 87.3043 Jts
 Depth 2767.55 ft

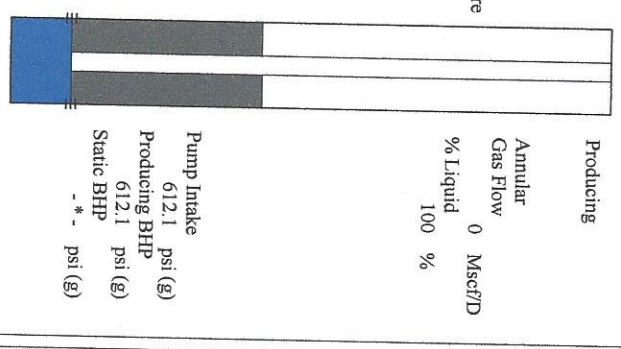
0.5 to 1.5 (Sec)



Analysis Method: Automatic

Group: McGinness Energy Well: VGM (acquired on: 07/14/23 13:15:49)

Production Current	Potential	Casing Pressure	Producing
Oil -*- BBL/D	Oil -*- BBL/D	0.0 psi (g)	Annular
Water -*- BBL/D	Water -*- BBL/D	Casing Pressure Buildup	Gas Flow
Gas -*- MscFD	Gas -*- MscFD	-*- psi	% Liquid
IPR Method	Vogel	Gas/Liquid Interface Pressure	0 MscFD
PBHP/SBHP	-*-	1.0 psi (g)	%
Production Efficiency	0.0		
Oil 40 deg API	Liquid Level Depth		
Water 1.05 Sp.Gr.H2O	2767.55 ft		
Gas 0.67 Sp.Gr.AIR	Pump Intake Depth		
Acoustic Velocity 1325.14 ft/s	4600.00 ft		
	Formation Depth		
	4600.00 ft		



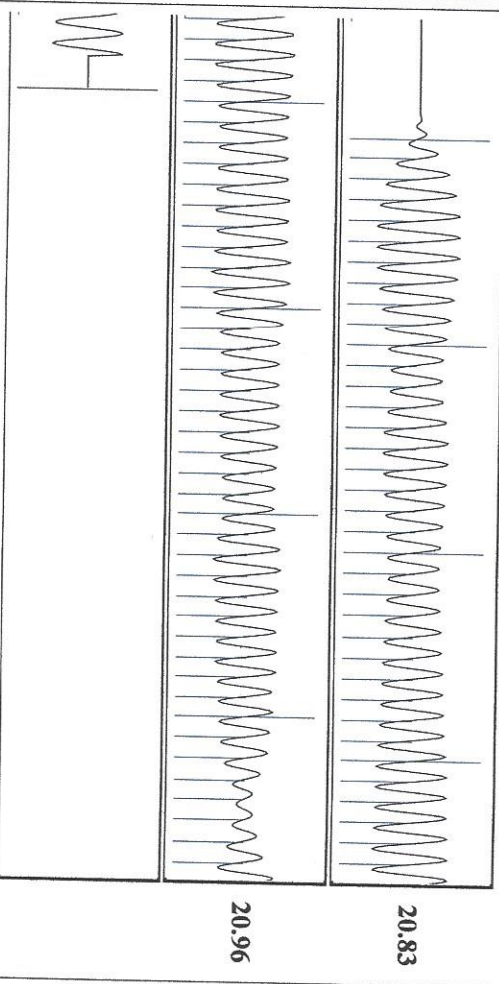
Pump Intake 612.1 psi (g)
 Producing BHP 612.1 psi (g)
 Static BHP -*- psi (g)

Group: McGinness Energy Well: VGM (acquired on: 07/14/23 13:15:49)

NO PRESSURE DATA AVAILABLE

Change in Pressure 0.00 psi PT8496
 Change in Time 0.00 min Range
 0 - ? psi

Group: McGinness Energy Well: VGM (acquired on: 07/14/23 13:15:49)



Acoustic Velocity 1325.14 ft/s Joints counted 77
 Joints Per Second 20.9012 jts/sec Joints to liquid level 87.3043
 Depth to liquid level 2767.55 ft Filter Width 18.7469
 Automatic Collar Count Yes Time to 1st Collar 0.28
 22.7469
 3.964

July 26, 2023

Douglas H McGinness II
McGinness Energy Company, Inc.
9330 E Central Ave Suite 300
WICHITA, KS 67206-6628

Re: Temporary Abandonment
API 15-097-21328-00-00
VGM 1
NE/4 Sec.05-28S-17W
Kiowa County, Kansas

Dear Douglas H McGinness II:

"Your temporary abandonment (TA) application for the well listed above has been approved. In accordance with K.A.R. 82-3-111 the TA status of this well will expire 07/26/2024.

- * If you return this well to service or plug it, please notify the District Office.
- * If you sell this well you are required to file a Transfer of Operator form, T-1.
- * If the well will remain temporarily abandoned, you must submit a new TA application, CP-111, before 07/26/2024.

You may contact me at the number above if you have questions.

Very truly yours,

Michael Maier"