

KANSAS CORPORATION COMMISSION
OIL & GAS CONSERVATION DIVISION

TEMPORARY ABANDONMENT WELL APPLICATION

OPERATOR: License#
Name:
Address 1:
Address 2:
City: State: Zip:
Contact Person:
Phone:
Contact Person Email:
Field Contact Person:
Field Contact Person Phone:

API No. 15-
Spot Description:
Sec. Twp. S. R.
GPS Location: Lat: Long:
Datum: NAD27 NAD83 WGS84
County: Elevation:
Lease Name: Well #:
Well Type: Oil Gas OG WSW Other:
SWD Permit #: ENHR Permit #:
Gas Storage Permit #:
Spud Date: Date Shut-In:

Table with 7 columns: Conductor, Surface, Production, Intermediate, Liner, Tubing. Rows include Size, Setting Depth, Amount of Cement, Top of Cement, Bottom of Cement.

Casing Fluid Level from Surface: How Determined? Date:
Casing Squeeze(s): to w / sacks of cement, to w / sacks of cement. Date:
Do you have a valid Oil & Gas Lease? Yes No
Depth and Type: Junk in Hole at Tools in Hole at Casing Leaks: Yes No Depth of casing leak(s):
Type Completion: ALT. I ALT. II Depth of: DV Tool: w / sacks of cement Port Collar: w / sack of cement
Packer Type: Size: Inch Set at: Feet
Total Depth: Plug Back Depth: Plug Back Method:

Geological Data:

Table with 4 columns: Formation Name, Formation Top, Formation Base, Completion Information. Rows 1 and 2.

UNDER PENALTY OF PERJURY I HEREBY ATTEST THAT THE INFORMATION CONTAINED HEREIN IS TRUE AND CORRECT TO THE BEST OF MY KNOWLEDGE

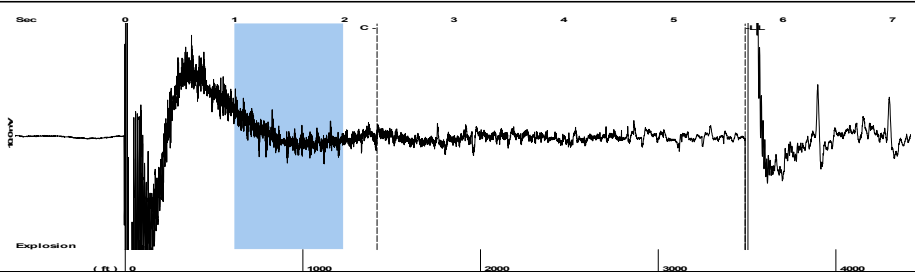
Submitted Electronically

Do NOT Write in This Space - KCC USE ONLY
Date Tested: Results: Date Plugged: Date Repaired: Date Put Back in Service:
Review Completed by: Comments:
TA Approved: Yes Denied Date:

Mail to the Appropriate KCC Conservation Office:

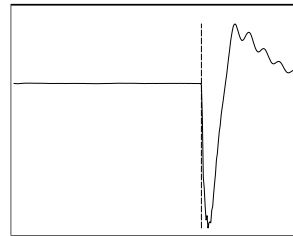
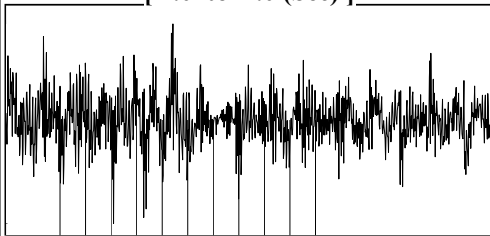
Table with 2 columns: Office Address, Phone. Rows for District Office #1, #2, #3, #4.

Group: MyWells Well: JUDITH # 1 (acquired on: 07/19/23 15:31:12)



Filter Type High Pass Automatic Collar Count Yes Time 5.654 sec
 Manual Acoustic Veloc 1207.62 ft/s Manual JTS/sec 19.0476 Joints 110.068 Jts
 Depth 3489.14 ft

[1.0 to 2.0 (Sec)]



Analysis Method: Automatic

Group: MyWells Well: JUDITH # 1 (acquired on: 07/19/23 15:31:12)



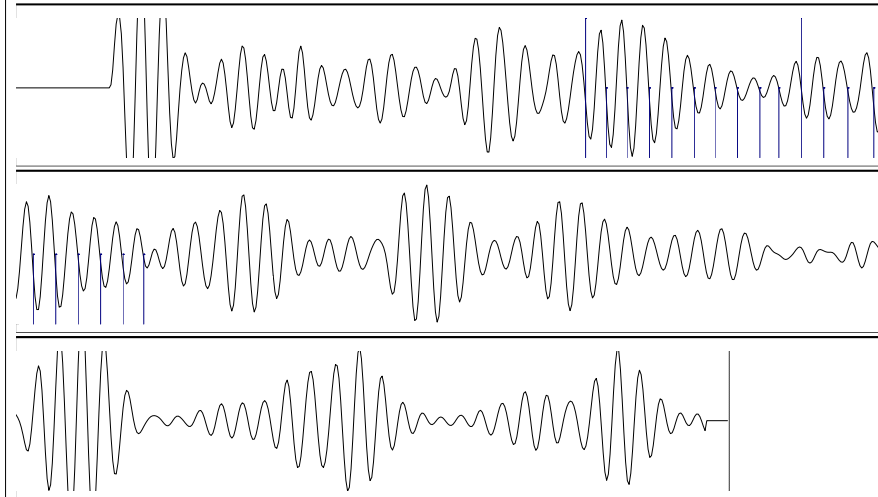
Change in Pressure 0.00 psi PT13682
 Range 0 - ? psi
 Change in Time 0.00 min

Group: MyWells Well: JUDITH # 1 (acquired on: 07/19/23 15:31:12)

Production Current	Potential	Casing Pressure	Producing
Oil - *-	- *- BBL/D	0.0 psi (g)	Annular Gas Flow - *- Mscf/D
Water - *-	- *- BBL/D	Casing Pressure Buildup - *- psi	% Liquid 100 %
Gas - *-	- *- Mscf/D	- *- min	
IPR Method	Vogel	Gas/Liquid Interface Pressure - *- psi (g)	
PBHP/SBHP - *-	- *-		
Production Efficiency 0.0		Liquid Level Depth 3489.14 ft	
Oil 40 deg.API		Pump Intake Depth - *- ft	
Water 1.05 Sp.Gr.H2O		Formation Depth 5963.00 ft	
Gas 0.76 Sp.Gr.AIR			
Acoustic Velocity 1234.22 ft/s			
Formation Submergence			
Total Gaseous Liquid Column HT (TVD) - *- ft			
Equivalent Gas Free Liquid HT (TVD) - *- ft			
Acoustic Test			



Group: MyWells Well: JUDITH # 1 (acquired on: 07/19/23 15:31:12)



Acoustic Velocity 1234.22 ft/s Joints counted 19
 Joints Per Second 19.4672 jts/sec Joints to liquid level 110.068
 Depth to liquid level 3489.14 ft Filter Width 17.0476 21.0476
 Automatic Collar Count Yes Time to 1st Collar 1.32 2.296

July 26, 2023

Jose Reyes
American Warrior, Inc.
PO BOX 399
GARDEN CITY, KS 67846-0399

Re: Temporary Abandonment
API 15-033-21187-00-00
JUDITH 1
SE/4 Sec.26-31S-20W
Comanche County, Kansas

Dear Jose Reyes:

"Your temporary abandonment (TA) application for the well listed above has been approved. In accordance with K.A.R. 82-3-111 the TA status of this well will expire 07/26/2024.

- * If you return this well to service or plug it, please notify the District Office.
- * If you sell this well you are required to file a Transfer of Operator form, T-1.
- * If the well will remain temporarily abandoned, you must submit a new TA application, CP-111, before 07/26/2024.

You may contact me at the number above if you have questions.

Very truly yours,

Michael Maier"