

KANSAS CORPORATION COMMISSION
OIL & GAS CONSERVATION DIVISION

TEMPORARY ABANDONMENT WELL APPLICATION

OPERATOR: License#
Name:
Address 1:
Address 2:
City: State: Zip:
Contact Person:
Phone:
Contact Person Email:
Field Contact Person:
Field Contact Person Phone:

API No. 15-
Spot Description:
Sec. Twp. S. R.
GPS Location: Lat: Long:
Datum: NAD27 NAD83 WGS84
County: Elevation:
Lease Name: Well #:
Well Type: Oil Gas OG WSW Other:
SWD Permit #: ENHR Permit #:
Gas Storage Permit #:
Spud Date: Date Shut-In:

Table with 7 columns: Conductor, Surface, Production, Intermediate, Liner, Tubing. Rows include Size, Setting Depth, Amount of Cement, Top of Cement, Bottom of Cement.

Casing Fluid Level from Surface: How Determined? Date:
Casing Squeeze(s): to w / sacks of cement, to w / sacks of cement. Date:
Do you have a valid Oil & Gas Lease? Yes No
Depth and Type: Junk in Hole at Tools in Hole at Casing Leaks: Yes No Depth of casing leak(s):
Type Completion: ALT. I ALT. II Depth of: DV Tool: w / sacks of cement Port Collar: w / sack of cement
Packer Type: Size: Inch Set at: Feet
Total Depth: Plug Back Depth: Plug Back Method:

Geological Data:

Table with 4 columns: Formation Name, Formation Top, Formation Base, Completion Information. Rows 1 and 2.

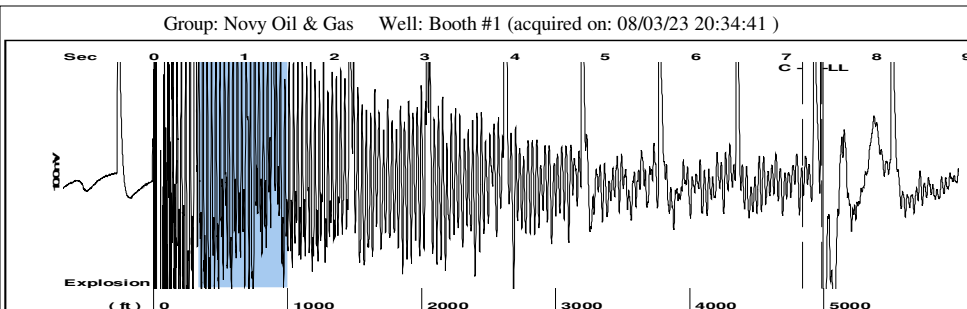
UNDER PENALTY OF PERJURY I HEREBY ATTEST THAT THE INFORMATION CONTAINED HEREIN IS TRUE AND CORRECT TO THE BEST OF MY KNOWLEDGE

Submitted Electronically

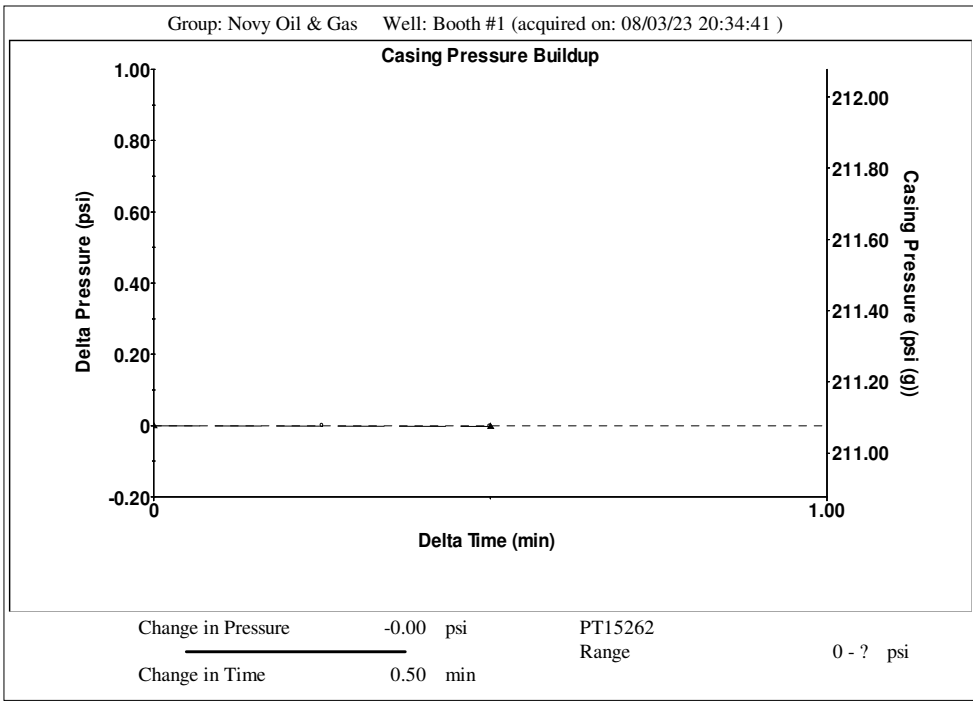
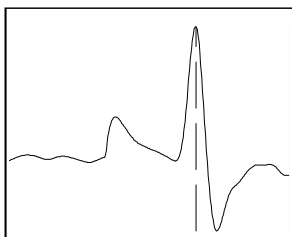
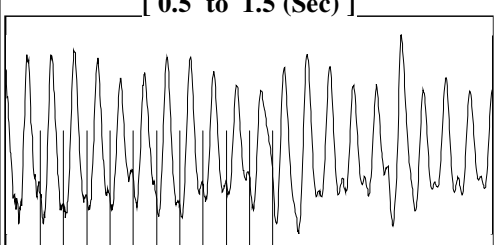
Do NOT Write in This Space - KCC USE ONLY
Date Tested: Results: Date Plugged: Date Repaired: Date Put Back in Service:
Review Completed by: Comments:
TA Approved: Yes Denied Date:

Mail to the Appropriate KCC Conservation Office:

Table with 2 columns: Office Address, Phone. Rows for District Office #1, #2, #3, #4.



Filter Type High Pass Automatic Collar Count Yes Time 7.4 sec
 Manual Acoustic Velox 1326.36 ft/s Manual JTS/sec 20.9205 Joints 157.287 Jts
 Depth 4986.01 ft



Group: Novy Oil & Gas Well: Booth #1 (acquired on: 08/03/23 20:34:41)

Production Current Potential Oil 0 - * - BBL/D Water 0 - * - BBL/D Gas - * - - * - Mscf/D IPR Method Vogel PBHP/SBHP - * - Production Efficiency 0.0 Oil 40 deg.API Water 1.05 Sp.Gr.H2O Gas 0.65 Sp.Gr.AIR Acoustic Velocity 1347.57 ft/s Formation Submergence Total Gaseous Liquid Column HT (TVD) - * - ft Equivalent Gas Free Liquid HT (TVD) - * - ft Acoustic Test	Casing Pressure 211.1 psi (g) Casing Pressure Buildup -0.002 psi Gas/Liquid Interface Pressure 0.50 min 237.5 psi (g) Liquid Level Depth 4986.01 ft Pump Intake Depth 4900.00 ft Formation Depth 5090.00 ft Producing Annular Gas Flow 0 Mscf/D % Liquid 100 % Liquid Stream Below Tubing Oil 0 % Water 100 % Liquid Below Tubing 100 % Pump Intake 237.0 psi (g) Producing BHP 284.7 psi (g) Static BHP 280.8 psi (g)	
---	--	--

Group: Novy Oil & Gas Well: Booth #1 (acquired on: 08/03/23 20:34:41)

Acoustic Velocity	1347.57 ft/s	Joints counted	147
Joints Per Second	21.2551 jts/sec	Joints to liquid level	157.287
Depth to liquid level	4986.01 ft	Filter Width	18.9205 22.9205
Automatic Collar Count	Yes	Time to 1st Collar	0.272 7.188

August 08, 2023

Michael E. Novy
Novy Oil & Gas, Inc.
PO BOX 559
GODDARD, KS 67052-0559

Re: Temporary Abandonment
API 15-097-20552-00-00
BOOTH 1
SE/4 Sec.36-30S-18W
Kiowa County, Kansas

Dear Michael E. Novy:

"Your temporary abandonment (TA) application for the well listed above has been approved. In accordance with K.A.R. 82-3-111 the TA status of this well will expire 08/08/2024.

- * If you return this well to service or plug it, please notify the District Office.
- * If you sell this well you are required to file a Transfer of Operator form, T-1.
- * If the well will remain temporarily abandoned, you must submit a new TA application, CP-111, before 08/08/2024.

You may contact me at the number above if you have questions.

Very truly yours,

Michael Maier"