

KANSAS CORPORATION COMMISSION
OIL & GAS CONSERVATION DIVISION

TEMPORARY ABANDONMENT WELL APPLICATION

OPERATOR: License#
Name:
Address 1:
Address 2:
City: State: Zip:
Contact Person:
Phone:
Contact Person Email:
Field Contact Person:
Field Contact Person Phone:

API No. 15-
Spot Description:
Sec. Twp. S. R.
GPS Location: Lat: Long:
Datum: NAD27 NAD83 WGS84
County: Elevation:
Lease Name: Well #:
Well Type: Oil Gas OG WSW Other:
SWD Permit #: ENHR Permit #:
Gas Storage Permit #:
Spud Date: Date Shut-In:

Table with 7 columns: Conductor, Surface, Production, Intermediate, Liner, Tubing. Rows include Size, Setting Depth, Amount of Cement, Top of Cement, Bottom of Cement.

Casing Fluid Level from Surface: How Determined? Date:
Casing Squeeze(s): to w / sacks of cement, to w / sacks of cement. Date:
Do you have a valid Oil & Gas Lease? Yes No
Depth and Type: Junk in Hole at Tools in Hole at Casing Leaks: Yes No Depth of casing leak(s):
Type Completion: ALT. I ALT. II Depth of: DV Tool: w / sacks of cement Port Collar: w / sack of cement
Packer Type: Size: Inch Set at: Feet
Total Depth: Plug Back Depth: Plug Back Method:

Geological Data:

Table with 4 columns: Formation Name, Formation Top, Formation Base, Completion Information. Rows 1 and 2.

UNDER PENALTY OF PERJURY I HEREBY ATTEST THAT THE INFORMATION CONTAINED HEREIN IS TRUE AND CORRECT TO THE BEST OF MY KNOWLEDGE

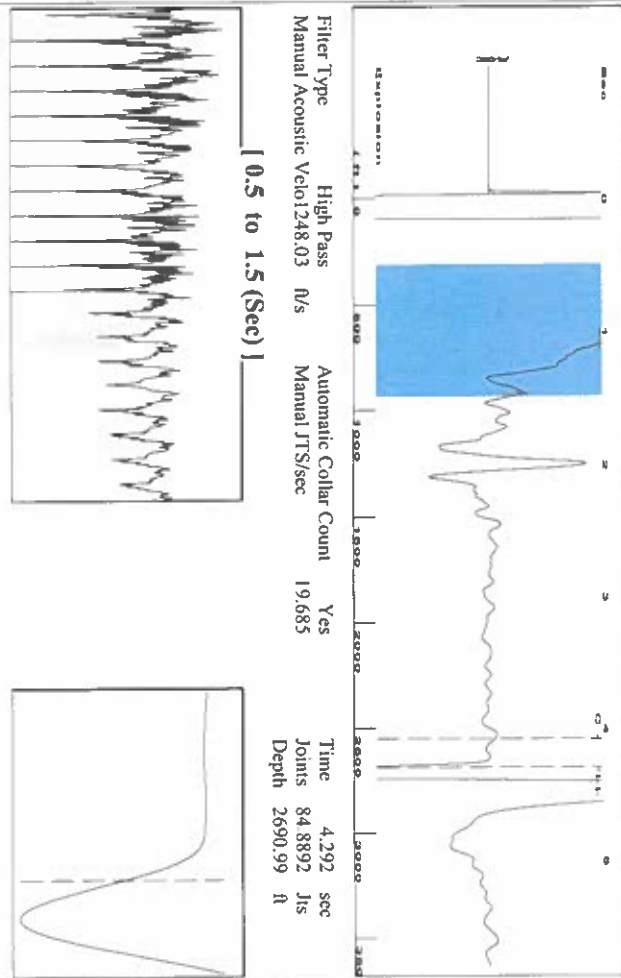
Submitted Electronically

Do NOT Write in This Space - KCC USE ONLY
Date Tested: Results: Date Plugged: Date Repaired: Date Put Back in Service:
Review Completed by: Comments:
TA Approved: Yes Denied Date:

Mail to the Appropriate KCC Conservation Office:

Table with 2 columns: Office Address, Phone. Rows for District Office #1, #2, #3, #4.

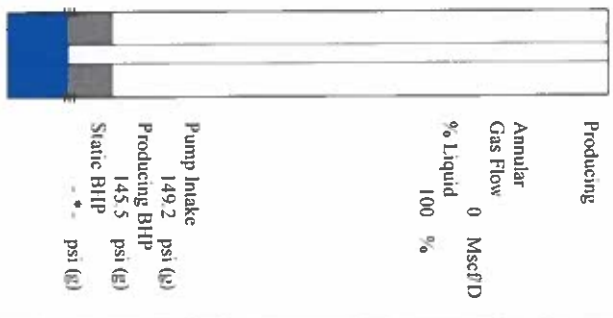
Group: Merrit Energy Company-Ulysses Well: Askew A-2 (acquired on: 07/31/23 14:04:10)



Analysis Method: Automatic

Group: Merrit Energy Company-Ulysses Well: Askew A-2 (acquired on: 07/31/23 14:04:10)

Production	Potential	Casing Pressure	Producing
Current *	BBL/D	52.1 psi (g)	Annular
Water **	BBL/D	Casing Pressure Buildup	Gas Flow
Gas **	Mscf/D	-0.007 psi	% Liquid
		4.00 min	100 %
IPK Method	Vogel	Gas/Liquid Interface Pressure	% Mscf/D
PBHP/SBHP		56.7 psi (g)	
Production Efficiency	0.0		
Oil 40 deg API		Liquid Level Depth	
Water 1.05 Sp.Gr.H2O		2690.99 ft	
Gas 0.74 Sp.Gr.AIR		Pump Intake Depth	
		2965.00 ft	
Acoustic Velocity	1253.96 ft/s	Formation Depth	
		2954.00 ft	

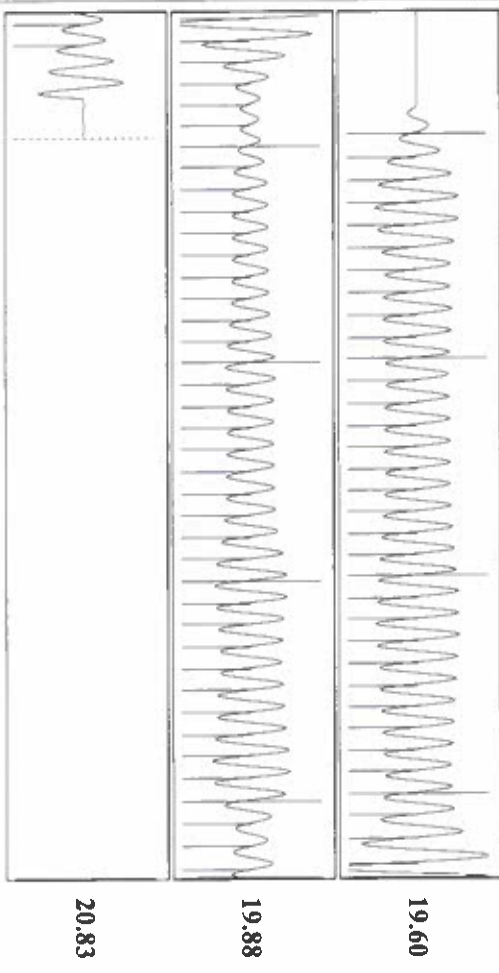


Formation Submergence
Total Gaseous Liquid Column HT (TVD) 274 ft
Equivalent Gas Free Liquid HT (TVD) 274 ft
7/31/23B

Group: Merrit Energy Company-Ulysses Well: Askew A-2 (acquired on: 07/31/23 14:04:10)



Group: Merrit Energy Company-Ulysses Well: Askew A-2 (acquired on: 07/31/23 14:04:10)



Acoustic Velocity	Joints counted	Time to 1st Collar
1253.96 ft/s	75	4.076
19.7785 Jis/Sec	84,8892	21.685
2690.99 ft	17.685	4.076
Automatic Collar Count: Yes	0.284	

August 10, 2023

Katherine McClurkan
Merit Energy Company, LLC
13727 Noel Road, Suite 1200
Dallas, TX 75240-7362

Re: Temporary Abandonment
API 15-067-20435-00-00
Askew A 2
NE/4 Sec.23-27S-35W
Grant County, Kansas

Dear Katherine McClurkan:

"Your temporary abandonment (TA) application for the well listed above has been approved. In accordance with K.A.R. 82-3-111 the TA status of this well will expire 08/10/2024.

- * If you return this well to service or plug it, please notify the District Office.
- * If you sell this well you are required to file a Transfer of Operator form, T-1.
- * If the well will remain temporarily abandoned, you must submit a new TA application, CP-111, before 08/10/2024.

You may contact me at the number above if you have questions.

Very truly yours,

Michael Maier"