

KANSAS CORPORATION COMMISSION
OIL & GAS CONSERVATION DIVISION

Form must be Typed
Form must be signed

TEMPORARY ABANDONMENT WELL APPLICATION

All blanks must be complete

OPERATOR: License#
Name:
Address 1:
Address 2:
City: State: Zip:
Contact Person:
Phone:
Contact Person Email:
Field Contact Person:
Field Contact Person Phone:

API No. 15-
Spot Description:
Sec. Twp. S. R.
feet from N / S Line of Section
feet from E / W Line of Section
GPS Location: Lat: , Long:
Datum: NAD27 NAD83 WGS84
County: Elevation: GL KB
Lease Name: Well #:
Well Type: (check one) Oil Gas OG WSW Other:
SWD Permit #: ENHR Permit #:
Gas Storage Permit #:
Spud Date: Date Shut-In:

Table with 7 columns: Conductor, Surface, Production, Intermediate, Liner, Tubing. Rows include Size, Setting Depth, Amount of Cement, Top of Cement, Bottom of Cement.

Casing Fluid Level from Surface: How Determined? Date:
Casing Squeeze(s): to w / sacks of cement, to w / sacks of cement. Date:
Do you have a valid Oil & Gas Lease? Yes No
Depth and Type: Junk in Hole at Tools in Hole at Casing Leaks: Yes No Depth of casing leak(s):
Type Completion: ALT. I ALT. II Depth of: DV Tool: w / sacks of cement Port Collar: w / sack of cement
Packer Type: Size: Inch Set at: Feet
Total Depth: Plug Back Depth: Plug Back Method:

Geological Data:

Table with 4 columns: Formation Name, Formation Top, Formation Base, Completion Information. Rows 1 and 2.

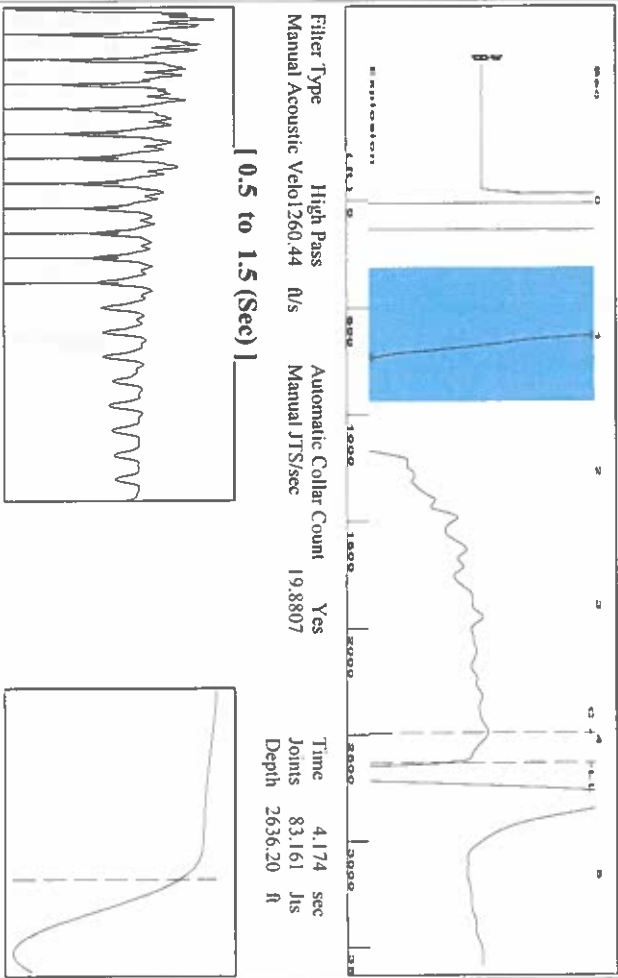
UNDER PENALTY OF PERJURY I HEREBY ATTEST THAT THE INFORMATION CONTAINED HEREIN IS TRUE AND CORRECT TO THE BEST OF MY KNOWLEDGE

Submitted Electronically

Do NOT Write in This Space - KCC USE ONLY
Date Tested: Results: Date Plugged: Date Repaired: Date Put Back in Service:
Review Completed by: Comments:
TA Approved: Yes Denied Date:

Mail to the Appropriate KCC Conservation Office:

Table with 3 columns: District Office, Address, Phone. Rows for District Office #1, #2, #3, #4.

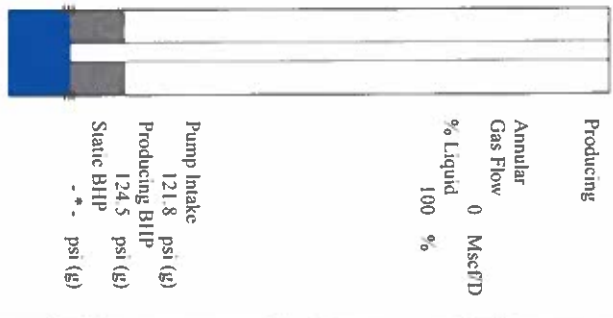


Filter Type High Pass Automatic Collar Count Yes
 Manual Acoustic Velo 1260.44 ft/s Manual JTS/sec 19.8807
 Time 4.174 sec
 Joints 83.161 Jis
 Depth 2636.20 ft

0.5 to 1.5 (Sec)

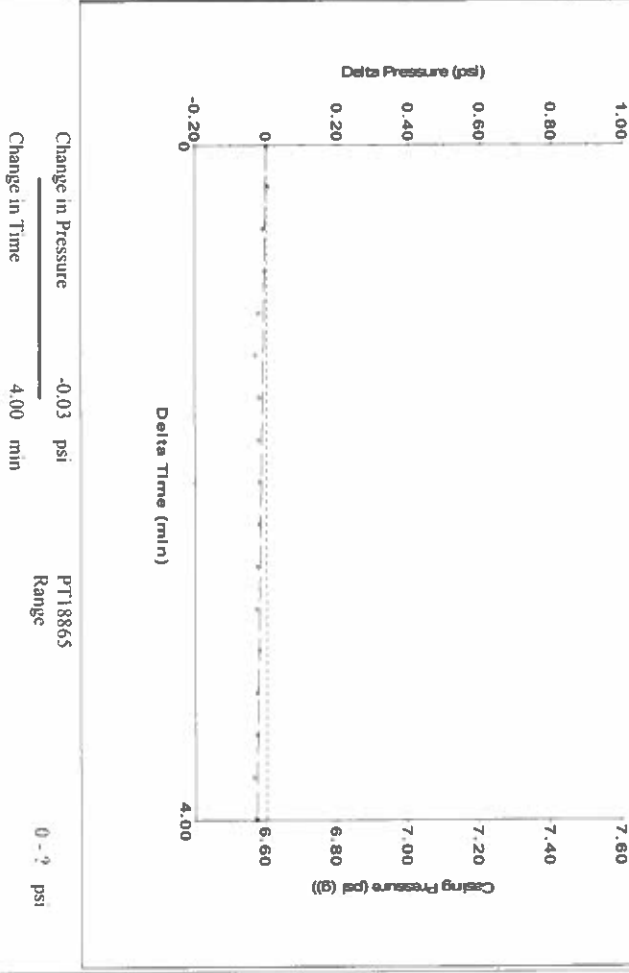
Analysis Method: Automatic

Production	Potential	Casing Pressure	Producing
Current	BBL/D	6.6 psi (g)	Annular
Oil	BBL/D	Casing Pressure Buildup	Gas Flow
Water	BBL/D	-0.028 psi	% Liquid
Gas	Mscf/D	4.00 min	100 %
IPR Method	Vogel	Gas/Liquid Interface Pressure	
PBHP/SBHP	0.0	8.0 psi (g)	
Production Efficiency		Liquid Level Depth	
		2636.20 ft	
Oil 40 def API		Pump Intake Depth	
Water 1.05 Sp.Gr.H2O		2972.00 ft	
Gas 0.74 Sp.Gr.AIR		Formation Depth	
Acoustic Velocity	1263.16 ft/s	2978.00 ft	

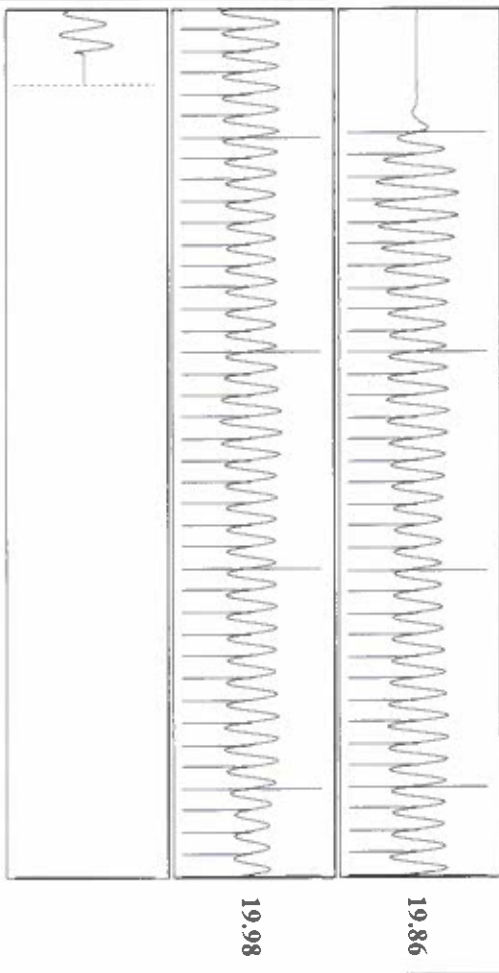


Formation Submergence
 Total Gaseous Liquid Column HT (TVD) 336 ft
 Equivalent Gas Free Liquid HT (TVD) 336 ft

7/31/23



Change in Pressure -0.03 psi PT18865
 Change in Time 4.00 min Range 0 - ? psi



Acoustic Velocity 1263.16 ft/s Joints counted 73
 Joints Per Second 19.9236 Jis/sec Joints to liquid level 83.161
 Depth to liquid level 2636.2 ft Filter Width 17.8807
 Automatic Collar Count Yes Time to 1st Collar 0.284

August 10, 2023

Katherine McClurkan
Merit Energy Company, LLC
13727 Noel Road, Suite 1200
Dallas, TX 75240-7362

Re: Temporary Abandonment
API 15-067-20415-00-00
English G 2
NE/4 Sec.04-28S-35W
Grant County, Kansas

Dear Katherine McClurkan:

"Your temporary abandonment (TA) application for the well listed above has been approved. In accordance with K.A.R. 82-3-111 the TA status of this well will expire 08/10/2024.

- * If you return this well to service or plug it, please notify the District Office.
- * If you sell this well you are required to file a Transfer of Operator form, T-1.
- * If the well will remain temporarily abandoned, you must submit a new TA application, CP-111, before 08/10/2024.

You may contact me at the number above if you have questions.

Very truly yours,

Michael Maier"