

KANSAS CORPORATION COMMISSION
OIL & GAS CONSERVATION DIVISION

TEMPORARY ABANDONMENT WELL APPLICATION

OPERATOR: License#
Name:
Address 1:
Address 2:
City: State: Zip:
Contact Person:
Phone:
Contact Person Email:
Field Contact Person:
Field Contact Person Phone:

API No. 15-
Spot Description:
Sec. Twp. S. R.
GPS Location: Lat: Long:
Datum: NAD27 NAD83 WGS84
County: Elevation:
Lease Name: Well #:
Well Type: Oil Gas OG WSW Other:
SWD Permit #: ENHR Permit #:
Gas Storage Permit #:
Spud Date: Date Shut-In:

Table with 7 columns: Conductor, Surface, Production, Intermediate, Liner, Tubing. Rows include Size, Setting Depth, Amount of Cement, Top of Cement, Bottom of Cement.

Casing Fluid Level from Surface: How Determined? Date:
Casing Squeeze(s): to w / sacks of cement, to w / sacks of cement. Date:
Do you have a valid Oil & Gas Lease? Yes No
Depth and Type: Junk in Hole at Tools in Hole at Casing Leaks: Yes No Depth of casing leak(s):
Type Completion: ALT. I ALT. II Depth of: DV Tool: w / sacks of cement Port Collar: w / sack of cement
Packer Type: Size: Inch Set at: Feet
Total Depth: Plug Back Depth: Plug Back Method:

Geological Data:

Table with 4 columns: Formation Name, Formation Top, Formation Base, Completion Information. Rows 1 and 2.

UNDER PENALTY OF PERJURY I HEREBY ATTEST THAT THE INFORMATION CONTAINED HEREIN IS TRUE AND CORRECT TO THE BEST OF MY KNOWLEDGE

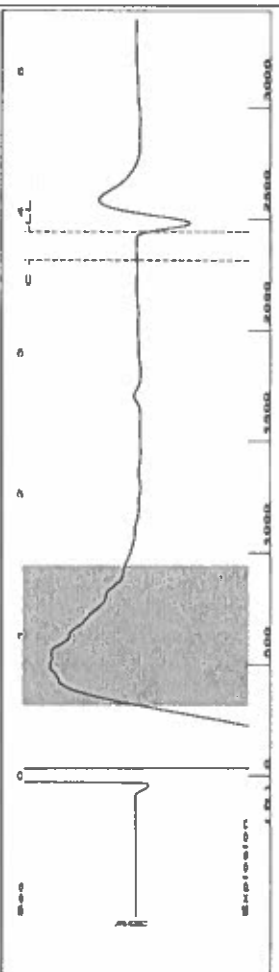
Submitted Electronically

Do NOT Write in This Space - KCC USE ONLY
Date Tested: Results: Date Plugged: Date Repaired: Date Put Back in Service:
Review Completed by: Comments:
TA Approved: Yes Denied Date:

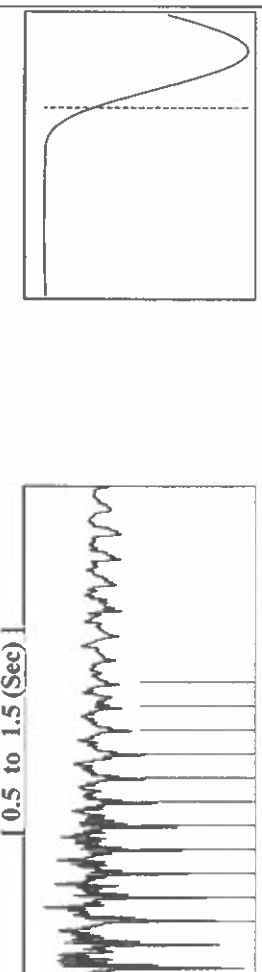
Mail to the Appropriate KCC Conservation Office:

Table with 2 columns: Office Address, Phone. Rows for District Office #1, #2, #3, #4.

Group: TAD Well: Harms A-2 (acquired on: 07/22/23 11:15:42)



Filter Type High Pass Automatic Collar Count Yes
 Manual Acoustic Veloc 293.88 ft/s Manual JTS/sec 20.4082
 Time 3.859 sec
 Joints 76.9988 Jts
 Depth 2440.86 ft



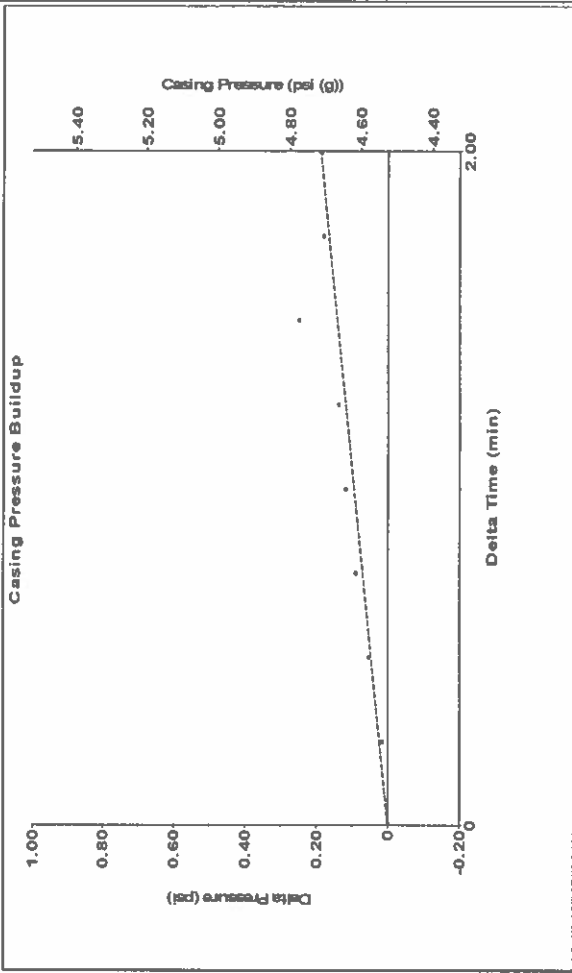
Analysis Method: Automatic

Group: TAD Well: Harms A-2 (acquired on: 07/22/23 11:15:42)

Production	Potential	Casing Pressure	4.5 psi (g)
Current	BBL/D	Casing Pressure Buildup	0.2 psi
Oil	BBL/D	Gas/Liquid Interface Pressure	5.7 psi (g)
Water	Mscf/D	Liquid Level Depth	2440.86 ft
Gas	Mscf/D	Pump Intake Depth	2750.00 ft
IPR Method	Vogel	Formation Depth	2942.00 ft
PBHP/SBHP	-. -		
Production Efficiency	0.0		
Oil	40 deg API		
Water	1.05 Sp.Gr.H2O		
Gas	0.74 Sp.Gr.AIR		
Acoustic Velocity	1265.02 ft/s		
Formation Submergence			
Total Gaseous Liquid Column HT (TVD)	309 ft		
Equivalent Gas Free Liquid HT (TVD)	280 ft		
Acoustic Test			

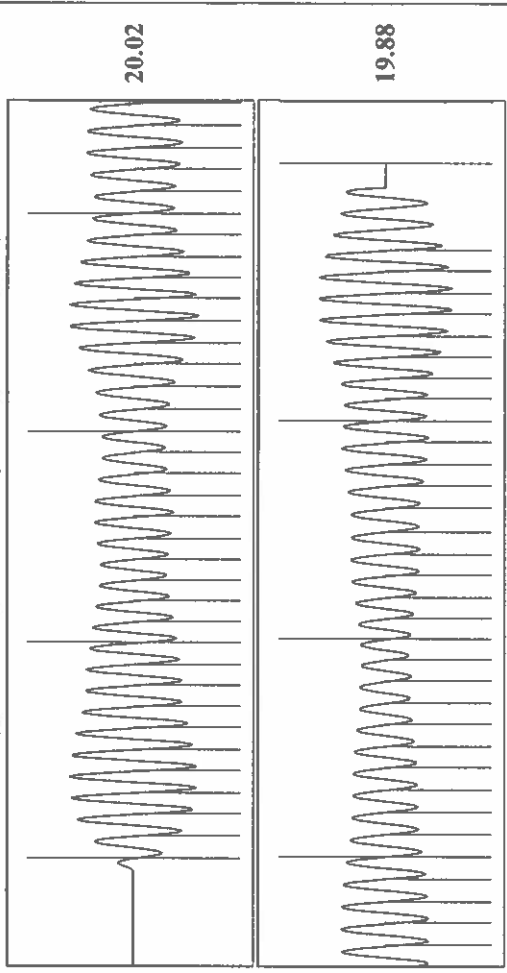
Producing	Annular Gas Flow	2 Mscf/D
	% Liquid	91 %
Pump Intake	100.9 psi (g)	
Producing BHP	182.7 psi (g)	
Static BHP	-. - psi (g)	

Group: TA'D Well: Harms A-2 (acquired on: 07/22/23 11:15:42)



Change in Pressure 0.19 psi PT 14654 Range
 Change in Time 2.00 min

Group: TA'D Well: Harms A-2 (acquired on: 07/22/23 11:15:42)



Acoustic Velocity	1265.02 ft/s	Joints counted	68
Joints Per Second	19.9531 jts/sec	Joints to liquid level	76.9988
Depth to liquid level	2440.86 ft	Filter Width	18.4082
Automatic Collar Count	Yes	Time to 1st Collar	0.248
			3.656

August 10, 2023

Katherine McClurkan
Merit Energy Company, LLC
13727 Noel Road, Suite 1200
Dallas, TX 75240-7362

Re: Temporary Abandonment
API 15-055-20964-00-00
Harms A 2
SW/4 Sec.27-26S-33W
Finney County, Kansas

Dear Katherine McClurkan:

"Your temporary abandonment (TA) application for the well listed above has been approved. In accordance with K.A.R. 82-3-111 the TA status of this well will expire 08/10/2024.

- * If you return this well to service or plug it, please notify the District Office.
- * If you sell this well you are required to file a Transfer of Operator form, T-1.
- * If the well will remain temporarily abandoned, you must submit a new TA application, CP-111, before 08/10/2024.

You may contact me at the number above if you have questions.

Very truly yours,

Michael Maier"