

KANSAS CORPORATION COMMISSION
OIL & GAS CONSERVATION DIVISION

TEMPORARY ABANDONMENT WELL APPLICATION

OPERATOR: License#
Name:
Address 1:
Address 2:
City: State: Zip:
Contact Person:
Phone:
Contact Person Email:
Field Contact Person:
Field Contact Person Phone:

API No. 15-
Spot Description:
Sec. Twp. S. R.
feet from N / S Line of Section
feet from E / W Line of Section
GPS Location: Lat: , Long:
Datum: NAD27 NAD83 WGS84
County: Elevation: GL KB
Lease Name: Well #:
Well Type: Oil Gas OG WSW Other:
SWD Permit #: ENHR Permit #:
Gas Storage Permit #:
Spud Date: Date Shut-In:

Table with 7 columns: Conductor, Surface, Production, Intermediate, Liner, Tubing. Rows include Size, Setting Depth, Amount of Cement, Top of Cement, Bottom of Cement.

Casing Fluid Level from Surface: How Determined? Date:
Casing Squeeze(s): to w / sacks of cement, to w / sacks of cement. Date:
Do you have a valid Oil & Gas Lease? Yes No
Depth and Type: Junk in Hole at Tools in Hole at Casing Leaks: Yes No Depth of casing leak(s):
Type Completion: ALT. I ALT. II Depth of: DV Tool: w / sacks of cement Port Collar: w / sack of cement
Packer Type: Size: Inch Set at: Feet
Total Depth: Plug Back Depth: Plug Back Method:

Geological Data:

Table with 4 columns: Formation Name, Formation Top, Formation Base, Completion Information. Rows 1 and 2.

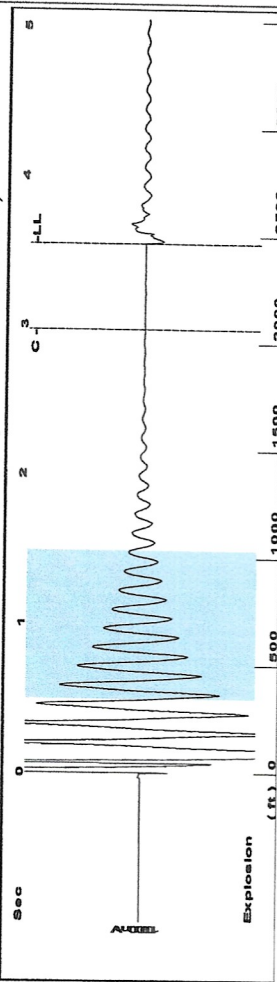
UNDER PENALTY OF PERJURY I HEREBY ATTEST THAT THE INFORMATION CONTAINED HEREIN IS TRUE AND CORRECT TO THE BEST OF MY KNOWLEDGE

Submitted Electronically

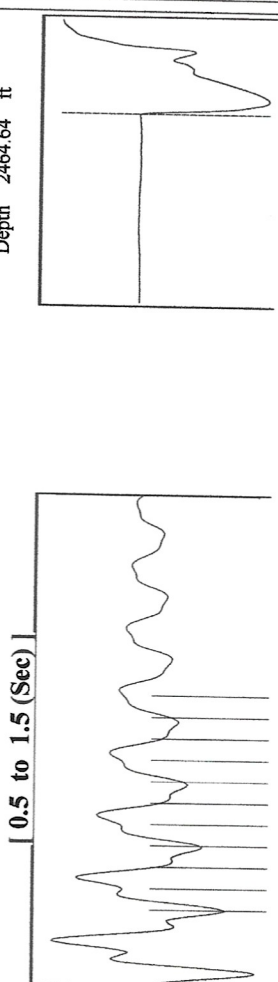
Form with fields: Do NOT Write in This Space - KCC USE ONLY, Date Tested, Results, Date Plugged, Date Repaired, Date Put Back in Service, Review Completed by, Comments, TA Approved: Yes Denied, Date.

Mail to the Appropriate KCC Conservation Office:

Table with 2 columns: Office Address, Phone. Rows for KCC District Office #1, #2, #3, #4.



Filter Type High Pass Automatic Collar Count Yes
 Manual Acoustic Velocity 1369.86 ft/s Manual JTS/sec 22.8311
 Time 3.547 sec
 Joints 82.1548 Jts
 Depth 2464.64 ft

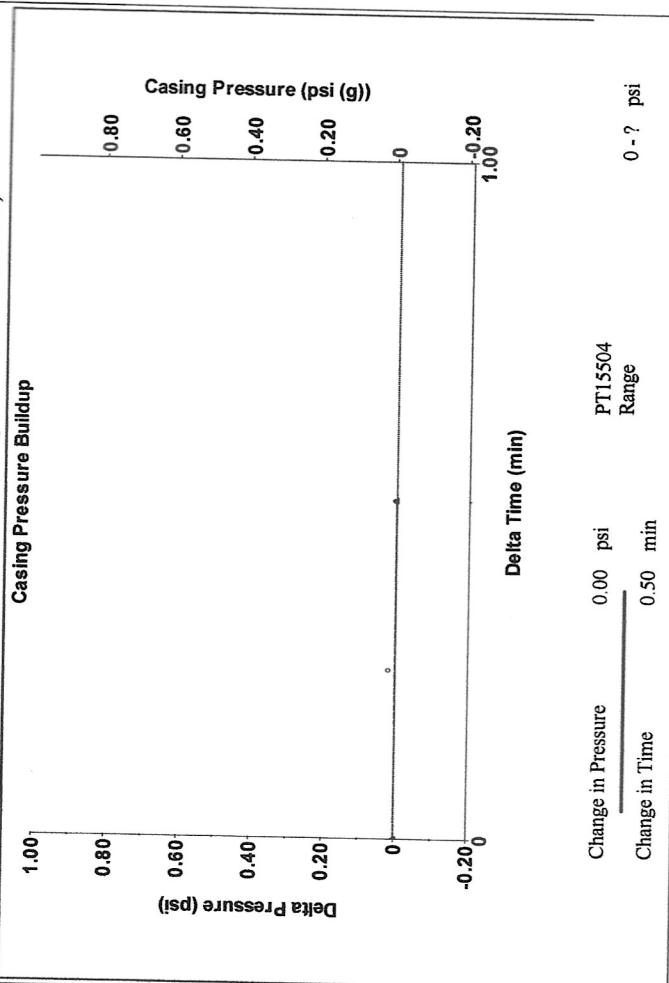


Analysis Method: Automatic

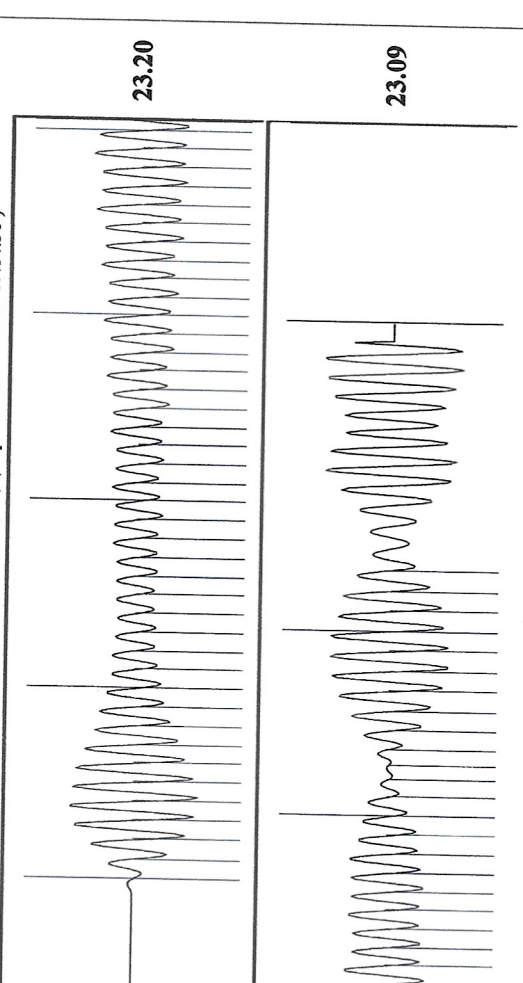
Production	Potential	Casing Pressure	-0.0 psi (g)
Oil 0	BBL/D	Casing Pressure Buildup	0.003 psi
Water 0	BBL/D	Gas/Liquid Interface Pressure	0.50 min
Gas 0.0	Mscf/D	Liquid Level Depth	2464.64 ft
IPR Method	Vogel	Pump Intake Depth	- - - ft
PBHP/SBHP	- - -	Formation Depth	4424.00 ft
Production Efficiency	0.0	Acoustic Velocity	1389.71 ft/s
Oil 39 deg API		Formation Submergence	1959 ft
Water 1.05 Sp.Gr.H2O		Total Gaseous Liquid Column HT (TVD)	1959 ft
Gas 0.62 Sp.Gr.AIR		Equivalent Gas Free Liquid HT (TVD)	



Producing
 Annular Gas Flow - - - Mscf/D
 % Liquid 100 %
 Pump Intake - - - psi (g)
 Producing BHP 891.6 psi (g)
 Static BHP - - - psi (g)



Change in Pressure 0.00 psi
 Change in Time 0.50 min
 PT15504 Range



Acoustic Velocity 1389.71 ft/s
 Joints Per Second 23.1618 jts/sec
 Depth to liquid level 2464.64 ft
 Automatic Collar Count Yes
 Joints counted 63
 Joints to liquid level 82.1548
 Filter Width 20.8311
 Time to 1st Collar 0.252

August 14, 2023

Kent Strube
Hartman Oil Co., Inc.
10500 E BERKELEY SQ PKWY STE 100
WICHITA, KS 67206

Re: Temporary Abandonment
API 15-055-20417-00-00
MAUNE L 4
SE/4 Sec.30-21S-33W
Finney County, Kansas

Dear Kent Strube:

"Your temporary abandonment (TA) application for the well listed above has been approved. In accordance with K.A.R. 82-3-111 the TA status of this well will expire 06/22/2024.

- * If you return this well to service or plug it, please notify the District Office.
- * If you sell this well you are required to file a Transfer of Operator form, T-1.
- * If the well will remain temporarily abandoned, you must submit a new TA application, CP-111, before 06/22/2024.

You may contact me at the number above if you have questions.

Very truly yours,

Michael Maier"