

KANSAS CORPORATION COMMISSION
OIL & GAS CONSERVATION DIVISION

TEMPORARY ABANDONMENT WELL APPLICATION

OPERATOR: License#
Name:
Address 1:
Address 2:
City: State: Zip:
Contact Person:
Phone:
Contact Person Email:
Field Contact Person:
Field Contact Person Phone:

API No. 15-
Spot Description:
Sec. Twp. S. R.
GPS Location: Lat: Long:
Datum: NAD27 NAD83 WGS84
County: Elevation:
Lease Name: Well #:
Well Type: Oil Gas OG WSW Other:
SWD Permit #: ENHR Permit #:
Gas Storage Permit #:
Spud Date: Date Shut-In:

Table with 7 columns: Conductor, Surface, Production, Intermediate, Liner, Tubing. Rows include Size, Setting Depth, Amount of Cement, Top of Cement, Bottom of Cement.

Casing Fluid Level from Surface: How Determined? Date:
Casing Squeeze(s): to w / sacks of cement, to w / sacks of cement. Date:
Do you have a valid Oil & Gas Lease? Yes No
Depth and Type: Junk in Hole at Tools in Hole at Casing Leaks: Yes No Depth of casing leak(s):
Type Completion: ALT. I ALT. II Depth of: DV Tool: w / sacks of cement Port Collar: w / sack of cement
Packer Type: Size: Inch Set at: Feet
Total Depth: Plug Back Depth: Plug Back Method:

Geological Data:

Table with 4 columns: Formation Name, Formation Top, Formation Base, Completion Information. Rows 1 and 2.

UNDER PENALTY OF PERJURY I HEREBY ATTEST THAT THE INFORMATION CONTAINED HEREIN IS TRUE AND CORRECT TO THE BEST OF MY KNOWLEDGE

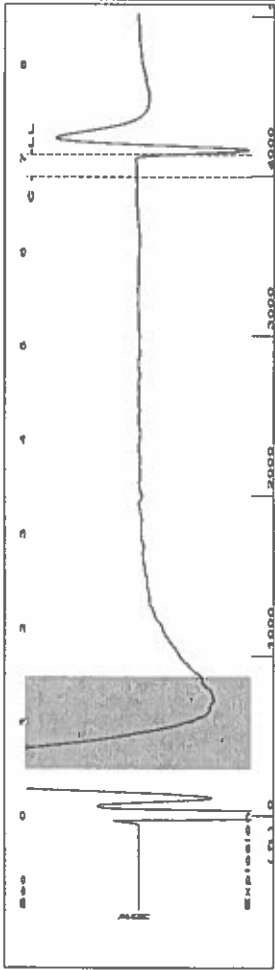
Submitted Electronically

Do NOT Write in This Space - KCC USE ONLY
Date Tested: Results: Date Plugged: Date Repaired: Date Put Back in Service:
Review Completed by: Comments:
TA Approved: Yes Denied Date:

Mail to the Appropriate KCC Conservation Office:

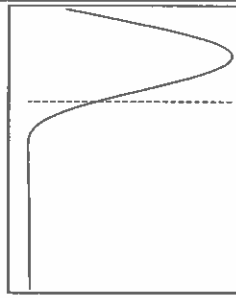
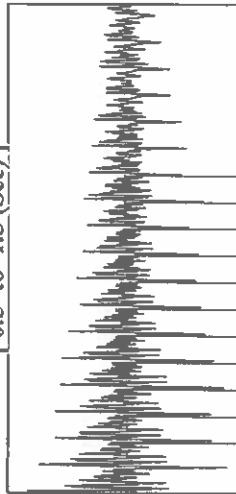
Table with 3 columns: District Office #, Address, Phone. Rows 1-4.

Group: TAD Well: atkins m-2 (acquired on: 08/02/23 13:39:29)



Filter Type High Pass Automatic Collar Count Yes Time 7.038 sec
 Manual Acoustic Veloc 154.83 ft/s Manual JTS/sec 18.2149 Jts
 Depth 4130.30 ft

[0.5 to 1.5 (Sec)]

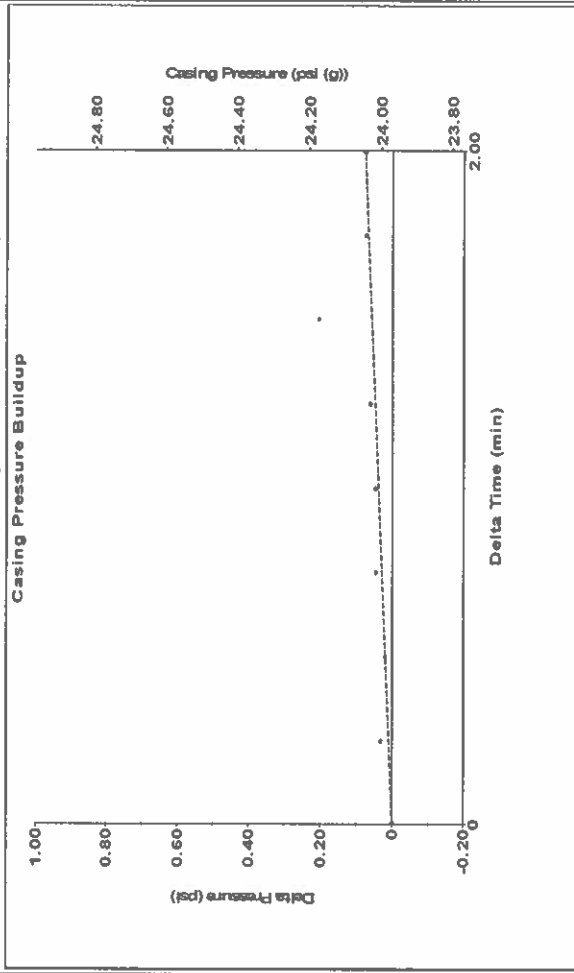


Analysis Method: Automatic

Group: TAD Well: atkins m-2 (acquired on: 08/02/23 13:39:29)

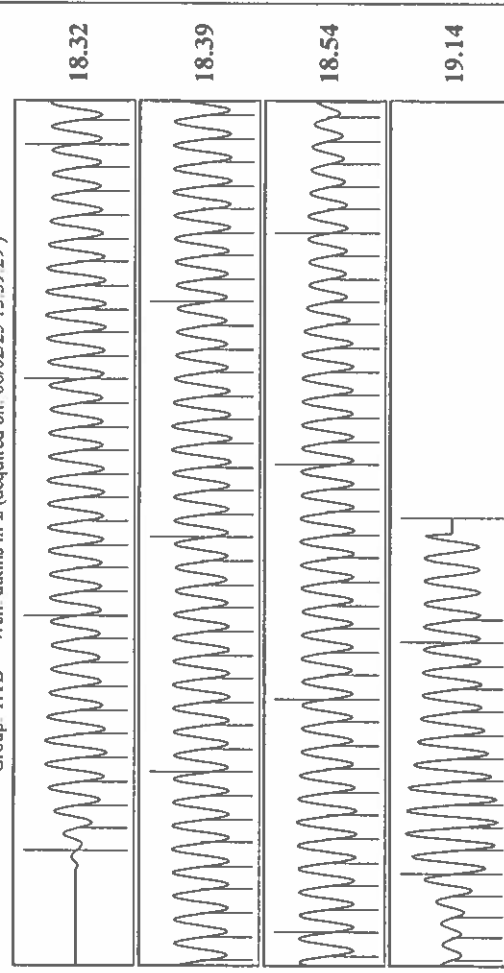
Production	Potential	Casing Pressure	24.0 psi (g)
Current	- * - BBL/D	Casing Pressure Buildup	0.076 psi
Oil	- * - BBL/D	Gas Flow	2.00 min
Water	- * - Mscf/D	% Liquid	94 %
Gas	- * - Mscf/D		
IPR Method	Vogel	Gas/Liquid Interface Pressure	28.6 psi (g)
PBHP/SBHP	- * -	Liquid Level Depth	4130.30 ft
Production Efficiency	0.0	Pump Intake Depth	5191.00 ft
Oil	40 deg API	Formation Depth	5134.00 ft
Water	1.05 Sp.Gr.H2O		
Gas	0.82 Sp.Gr.AIR		
Acoustic Velocity	1173.71 ft/s		
Formation Submergence			
Total Gaseous Liquid Column HT (TVD)	1061 ft		
Equivalent Gas Free Liquid HT (TVD)	999 ft		
Acoustic Test			
		Producing	
		Annular	
		Gas Flow	2 Mscf/D
		% Liquid	94 %
		Pump Intake	364.9 psi (g)
		Producing BHP	346.1 psi (g)
		Static BHP	- * - psi (g)

Group: TAD Well: atkins m-2 (acquired on: 08/02/23 13:39:29)



Change in Pressure 0.08 psi PT 14654
 Change in Time 2.00 min Range

Group: TAD Well: atkins m-2 (acquired on: 08/02/23 13:39:29)



Acoustic Velocity 1173.71 ft/s Joints counted 121
 Joints Per Second 18.5129 jts/sec Joints to liquid level 130.293
 Depth to liquid level 4130.3 ft Filter Width 20.2149
 Automatic Collar Count Yes Time to 1st Collar 0.264 6.8

August 16, 2023

Katherine McClurkan
Merit Energy Company, LLC
13727 Noel Road, Suite 1200
Dallas, TX 75240

Re: Temporary Abandonment
API 15-081-21366-00-00
Atkins M 2
NW/4 Sec.17-27S-33W
Haskell County, Kansas

Dear Katherine McClurkan:

"Your temporary abandonment (TA) application for the well listed above has been approved. In accordance with K.A.R. 82-3-111 the TA status of this well will expire 01/14/2024.

- * If you return this well to service or plug it, please notify the District Office.
- * If you sell this well you are required to file a Transfer of Operator form, T-1.
- * If the well will remain temporarily abandoned, you must submit a new TA application, CP-111, before 01/14/2024.

You may contact me at the number above if you have questions.

Very truly yours,

Michael Maier"