

**KANSAS CORPORATION COMMISSION  
OIL & GAS CONSERVATION DIVISION**

**TEMPORARY ABANDONMENT WELL APPLICATION**

OPERATOR: License# \_\_\_\_\_  
 Name: \_\_\_\_\_  
 Address 1: \_\_\_\_\_  
 Address 2: \_\_\_\_\_  
 City: \_\_\_\_\_ State: \_\_\_\_\_ Zip: \_\_\_\_\_ + \_\_\_\_\_  
 Contact Person: \_\_\_\_\_  
 Phone: ( \_\_\_\_\_ ) \_\_\_\_\_  
 Contact Person Email: \_\_\_\_\_  
 Field Contact Person: \_\_\_\_\_  
 Field Contact Person Phone: ( \_\_\_\_\_ ) \_\_\_\_\_

API No. 15- \_\_\_\_\_  
 Spot Description: \_\_\_\_\_  
 \_\_\_\_\_ - \_\_\_\_\_ - \_\_\_\_\_ - \_\_\_\_\_ Sec. \_\_\_\_\_ Twp. \_\_\_\_\_ S. R. \_\_\_\_\_  E  W  
 \_\_\_\_\_ feet from  N /  S Line of Section  
 \_\_\_\_\_ feet from  E /  W Line of Section  
 GPS Location: Lat: \_\_\_\_\_, Long: \_\_\_\_\_  
(e.g. xx.xxxxx) (e.g. -xxx.xxxxx)  
 Datum:  NAD27  NAD83  WGS84  
 County: \_\_\_\_\_ Elevation: \_\_\_\_\_  GL  KB  
 Lease Name: \_\_\_\_\_ Well #: \_\_\_\_\_  
 Well Type: (check one)  Oil  Gas  OG  WSW  Other: \_\_\_\_\_  
 SWD Permit #: \_\_\_\_\_  ENHR Permit #: \_\_\_\_\_  
 Gas Storage Permit #: \_\_\_\_\_  
 Spud Date: \_\_\_\_\_ Date Shut-In: \_\_\_\_\_

	Conductor	Surface	Production	Intermediate	Liner	Tubing
Size						
Setting Depth						
Amount of Cement						
Top of Cement						
Bottom of Cement						

Casing Fluid Level from Surface: \_\_\_\_\_ How Determined? \_\_\_\_\_ Date: \_\_\_\_\_  
 Casing Squeeze(s): \_\_\_\_\_ to \_\_\_\_\_ w / \_\_\_\_\_ sacks of cement, \_\_\_\_\_ to \_\_\_\_\_ w / \_\_\_\_\_ sacks of cement. Date: \_\_\_\_\_  
(top) (bottom) (top) (bottom)  
 Do you have a valid Oil & Gas Lease?  Yes  No  
 Depth and Type:  Junk in Hole at \_\_\_\_\_  Tools in Hole at \_\_\_\_\_ Casing Leaks:  Yes  No Depth of casing leak(s): \_\_\_\_\_  
(depth) (depth)  
 Type Completion:  ALT. I  ALT. II Depth of:  DV Tool: \_\_\_\_\_ w / \_\_\_\_\_ sacks of cement  Port Collar: \_\_\_\_\_ w / \_\_\_\_\_ sack of cement  
(depth) (depth)  
 Packer Type: \_\_\_\_\_ Size: \_\_\_\_\_ Inch Set at: \_\_\_\_\_ Feet  
 Total Depth: \_\_\_\_\_ Plug Back Depth: \_\_\_\_\_ Plug Back Method: \_\_\_\_\_

**Geological Data:**

Formation Name	Formation Top	Formation Base	Completion Information
1. _____	At: _____	to _____ Feet	Perforation Interval _____ to _____ Feet or Open Hole Interval _____ to _____ Feet
2. _____	At: _____	to _____ Feet	Perforation Interval _____ to _____ Feet or Open Hole Interval _____ to _____ Feet

UNDER PENALTY OF PERJURY I HEREBY ATTEST THAT THE INFORMATION CONTAINED HEREIN IS TRUE AND CORRECT TO THE BEST OF MY KNOWLEDGE

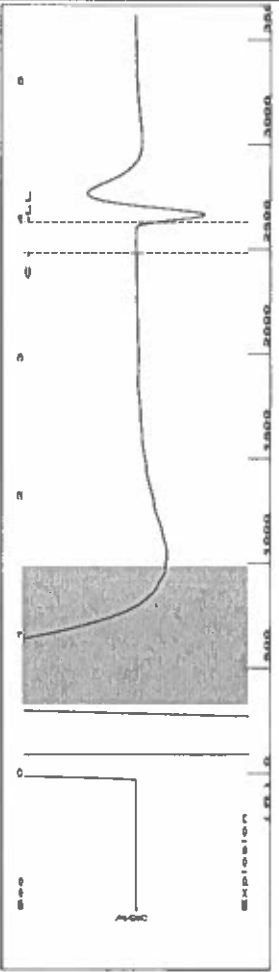
**Submitted Electronically**

<b>Do NOT Write in This Space - KCC USE ONLY</b>	Date Tested: _____	Results: _____	Date Plugged: _____	Date Repaired: _____	Date Put Back in Service: _____
	Review Completed by: _____ Comments: _____				
TA Approved: <input type="checkbox"/> Yes <input type="checkbox"/> Denied Date: _____					

**Mail to the Appropriate KCC Conservation Office:**

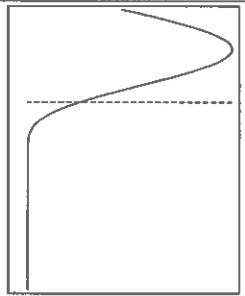
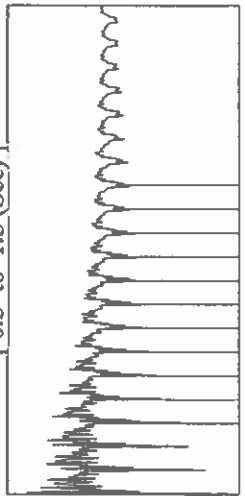
	KCC District Office #1 - 210 E. Frontview, Suite A, Dodge City, KS 67801	Phone 620.682.7933
	KCC District Office #2 - 3450 N. Rock Road, Building 600, Suite 601, Wichita, KS 67226	Phone 316.337.7400
	KCC District Office #3 - 137 E. 21st St., Chanute, KS 66720	Phone 620.902.6450
	KCC District Office #4 - 2301 E. 13th Street, Hays, KS 67601-2651	Phone 785.261.6250

Group: TAD Well: atkins g-3 (acquired on: 08/02/23 14:16:16)



Filter Type High Pass Automatic Collar Count Yes  
 Manual Acoustic Velocity 296.52 ft/s Manual JTS/sec 20.4499  
 Time 3.974 sec  
 Joints 82.7917 Jts  
 Depth 2624.50 ft

1.05 to 1.5 (Sec)

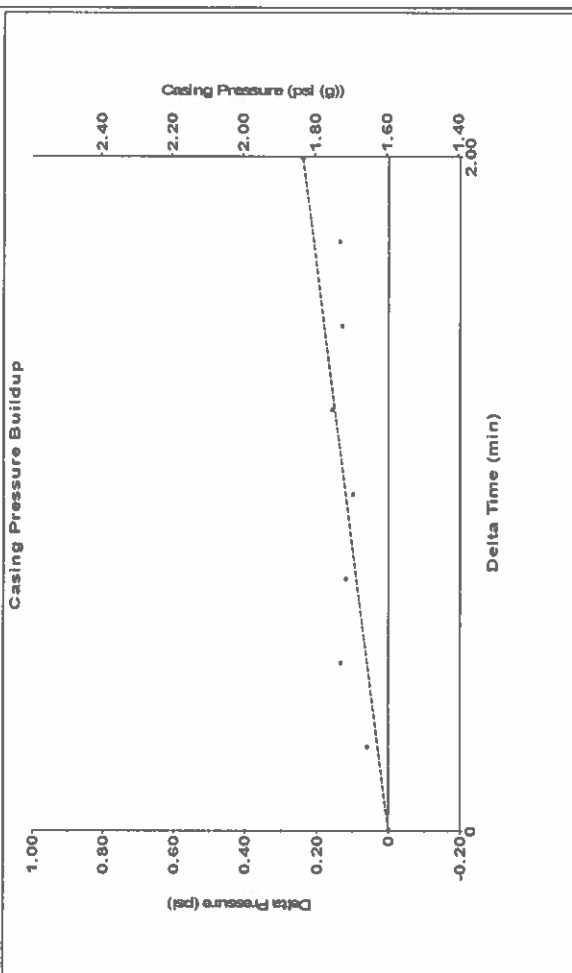


Analysis Method: Automatic

Group: TAD Well: atkins g-3 (acquired on: 08/02/23 14:16:16)

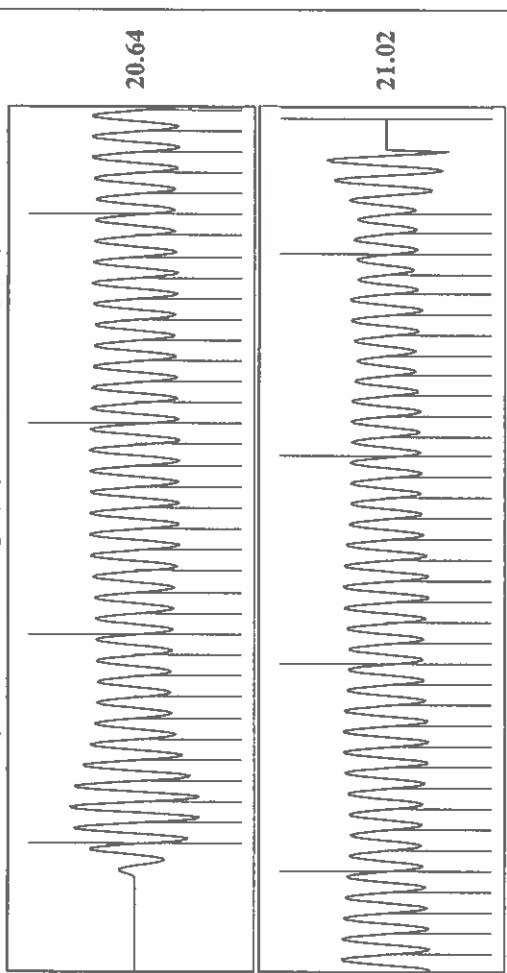
Production Current	Potential	Casing Pressure	1.6 psi (g)
Oil - * -	- * - BBL/D	Casing Pressure Buildup	0.240 psi
Water - * -	- * - BBL/D	Gas/Liquid Interface Pressure	2.00 min
Gas - * -	- * - Mscf/D		2.6 psi (g)
IPR Method	Vogel	Liquid Level Depth	2624.50 ft
PBHP/SBHP	- * -	Pump Intake Depth	2995.00 ft
Production Efficiency	0.0	Formation Depth	2869.00 ft
Oil 40 deg API			
Water 1.05 Sp.Gr.H2O			
Gas 0.69 Sp.Gr.AIR			
Acoustic Velocity	1320.83 ft/s		
Formation Submergence			
Total Gaseous Liquid Column HT (TVD)	371 ft		
Equivalent Gas Free Liquid HT (TVD)	340 ft		
Acoustic Test			
		Producing	
		Annular Gas Flow	3 Mscf/D
		% Liquid	88 %
		Pump Intake	117.3 psi (g)
		Producing BHP	75.0 psi (g)
		Static BHP	- * - psi (g)

Group: TAD Well: atkins g-3 (acquired on: 08/02/23 14:16:16)



Change in Pressure 0.24 psi  
 Change in Time 2.00 min  
 PT 14654 Range

Group: TAD Well: atkins g-3 (acquired on: 08/02/23 14:16:16)



Acoustic Velocity 1320.83 ft/s  
 Joints Per Second 20.8333 Jts/sec  
 Depth to liquid level 2624.5 ft  
 Automatic Collar Count Yes  
 Joints counted 72  
 Joints to liquid level 82.7917  
 Filter Width 18.4499  
 Time to 1st Collar 0.296 3.752

August 16, 2023

Katherine McClurkan  
Merit Energy Company, LLC  
13727 Noel Road, Suite 1200  
Dallas, TX 75240

Re: Temporary Abandonment  
API 15-081-21304-00-01  
Atkins G 3  
NW/4 Sec.08-27S-33W  
Haskell County, Kansas

Dear Katherine McClurkan:

"Your temporary abandonment (TA) application for the well listed above has been approved. In accordance with K.A.R. 82-3-111 the TA status of this well will expire 08/16/2024.

- \* If you return this well to service or plug it, please notify the District Office.
- \* If you sell this well you are required to file a Transfer of Operator form, T-1.
- \* If the well will remain temporarily abandoned, you must submit a new TA application, CP-111, before 08/16/2024.

You may contact me at the number above if you have questions.

Very truly yours,

Michael Maier"