

KANSAS CORPORATION COMMISSION
OIL & GAS CONSERVATION DIVISION

TEMPORARY ABANDONMENT WELL APPLICATION

OPERATOR: License#
Name:
Address 1:
Address 2:
City: State: Zip:
Contact Person:
Phone:
Contact Person Email:
Field Contact Person:
Field Contact Person Phone:

API No. 15-
Spot Description:
Sec. Twp. S. R.
GPS Location: Lat: Long:
Datum: NAD27 NAD83 WGS84
County: Elevation:
Lease Name: Well #:
Well Type: Oil Gas OG WSW Other:
SWD Permit #: ENHR Permit #:
Gas Storage Permit #:
Spud Date: Date Shut-In:

Table with 7 columns: Conductor, Surface, Production, Intermediate, Liner, Tubing. Rows include Size, Setting Depth, Amount of Cement, Top of Cement, Bottom of Cement.

Casing Fluid Level from Surface: How Determined? Date:
Casing Squeeze(s): to w / sacks of cement, to w / sacks of cement. Date:
Do you have a valid Oil & Gas Lease? Yes No
Depth and Type: Junk in Hole at Tools in Hole at Casing Leaks: Yes No Depth of casing leak(s):
Type Completion: ALT. I ALT. II Depth of: DV Tool: w / sacks of cement Port Collar: w / sack of cement
Packer Type: Size: Inch Set at: Feet
Total Depth: Plug Back Depth: Plug Back Method:

Geological Data:

Table with 4 columns: Formation Name, Formation Top, Formation Base, Completion Information. Rows 1 and 2.

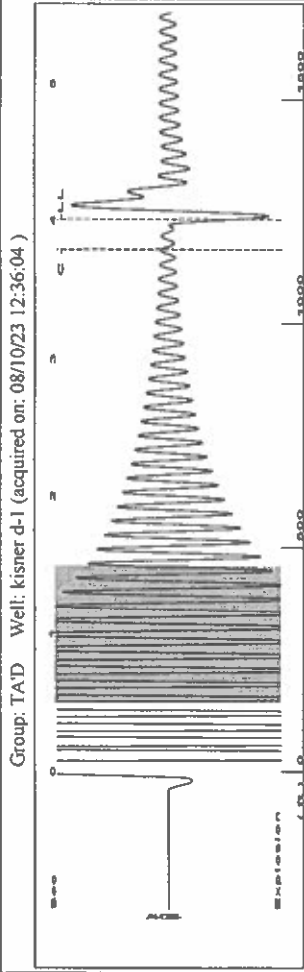
UNDER PENALTY OF PERJURY I HEREBY ATTEST THAT THE INFORMATION CONTAINED HEREIN IS TRUE AND CORRECT TO THE BEST OF MY KNOWLEDGE

Submitted Electronically

Do NOT Write in This Space - KCC USE ONLY
Date Tested: Results: Date Plugged: Date Repaired: Date Put Back in Service:
Review Completed by: Comments:
TA Approved: Yes Denied Date:

Mail to the Appropriate KCC Conservation Office:

Table with 2 columns: Office Address, Phone. Rows for District Office #1, #2, #3, #4.



Filter Type High Pass Automatic Collar Count Yes
 Manual Acoustic Veloc 703.663 ft/s Manual JTS/sec 11.0988
 Time 4.005 sec
 Joints 38.817 Jts
 Depth 1230.50 ft

0.5 to 1.5 (Sec)

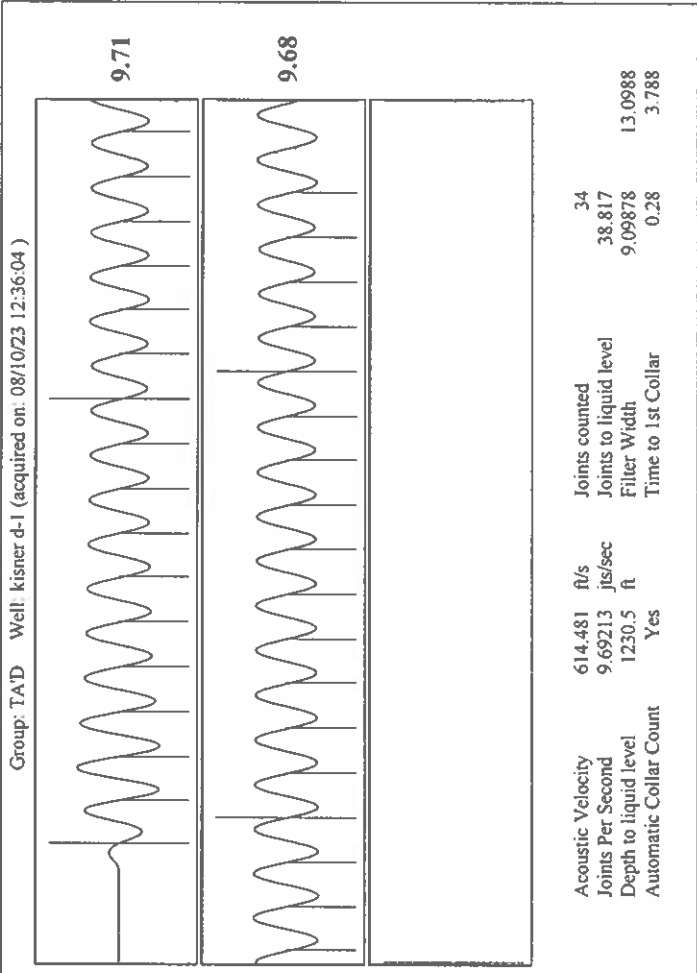
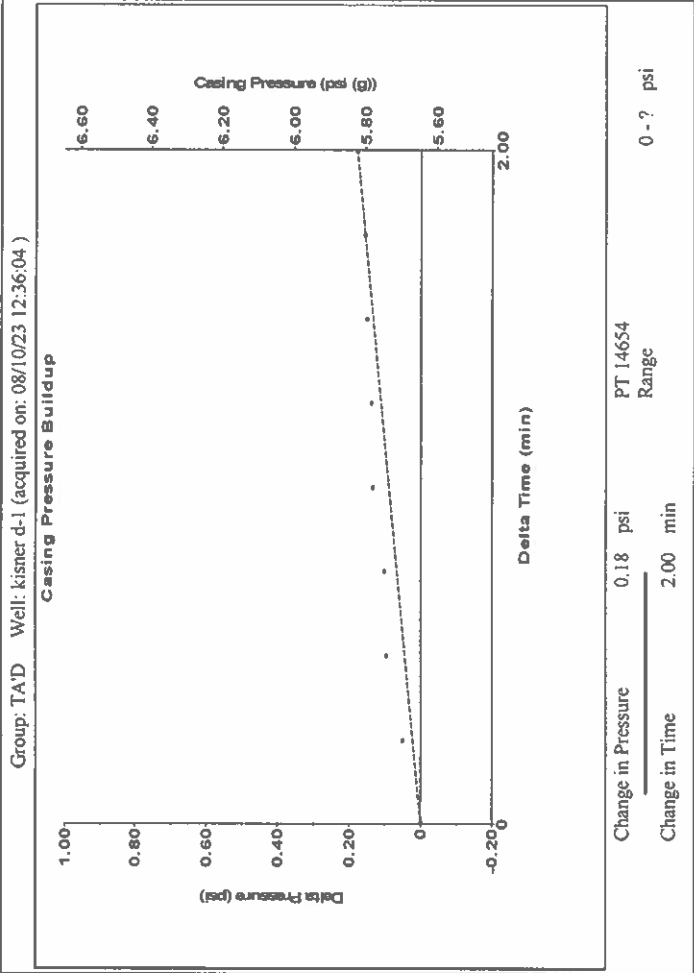
Analysis Method: Automatic

Group: TAD Well: kisner d-1 (acquired on: 08/10/23 12:36:04)

Production Potential	Casing Pressure	5.6 psi (g)
Oil - * - BBL/D	Casing Pressure Buildup	0.177 psi
Water - * - BBL/D		2.00 min
Gas - * - Mscf/D	Gas/Liquid Interface Pressure	6.9 psi (g)
IPR Method Vogel		
PBHP/SBHP - * -		
Production Efficiency 0.0		
Oil 40 deg API	Liquid Level Depth	1230.50 ft
Water 1.05 Sp.Gr:H2O	Pump Intake Depth	5270.00 ft
Gas 1.33 Sp.Gr:AIR	Formation Depth	5270.00 ft
Acoustic Velocity 614.481 ft/s		
Formation Submergence		
Total Gaseous Liquid Column HT (TVD)		4040 ft
Equivalent Gas Free Liquid HT (TVD)		3860 ft
Acoustic Test		

Producing Annular Gas Flow 2 Mscf/D
 % Liquid 96 %

Pump Intake 1768.6 psi (g)
 Producing BHP 1768.6 psi (g)
 Static BHP - * - psi (g)



August 16, 2023

Katherine McClurkan
Merit Energy Company, LLC
13727 Noel Road, Suite 1200
Dallas, TX 75240

Re: Temporary Abandonment
API 15-055-22286-00-00
Kisner D 1
NE/4 Sec.35-26S-33W
Finney County, Kansas

Dear Katherine McClurkan:

"Your temporary abandonment (TA) application for the well listed above has been approved. In accordance with K.A.R. 82-3-111 the TA status of this well will expire 05/09/2024.

- * If you return this well to service or plug it, please notify the District Office.
- * If you sell this well you are required to file a Transfer of Operator form, T-1.
- * If the well will remain temporarily abandoned, you must submit a new TA application, CP-111, before 05/09/2024.

You may contact me at the number above if you have questions.

Very truly yours,

Michael Maier"