

KANSAS CORPORATION COMMISSION  
OIL & GAS CONSERVATION DIVISION

TEMPORARY ABANDONMENT WELL APPLICATION

OPERATOR: License# \_\_\_\_\_  
 Name: \_\_\_\_\_  
 Address 1: \_\_\_\_\_  
 Address 2: \_\_\_\_\_  
 City: \_\_\_\_\_ State: \_\_\_\_\_ Zip: \_\_\_\_\_ + \_\_\_\_\_  
 Contact Person: \_\_\_\_\_  
 Phone: ( \_\_\_\_\_ ) \_\_\_\_\_  
 Contact Person Email: \_\_\_\_\_  
 Field Contact Person: \_\_\_\_\_  
 Field Contact Person Phone: ( \_\_\_\_\_ ) \_\_\_\_\_

API No. 15- \_\_\_\_\_  
 Spot Description: \_\_\_\_\_  
 \_\_\_\_\_ - \_\_\_\_\_ - \_\_\_\_\_ - \_\_\_\_\_ Sec. \_\_\_\_\_ Twp. \_\_\_\_\_ S. R. \_\_\_\_\_  E  W  
 \_\_\_\_\_ feet from  N /  S Line of Section  
 \_\_\_\_\_ feet from  E /  W Line of Section  
 GPS Location: Lat: \_\_\_\_\_, Long: \_\_\_\_\_  
(e.g. xx.xxxxx) (e.g. -xxx.xxxxx)  
 Datum:  NAD27  NAD83  WGS84  
 County: \_\_\_\_\_ Elevation: \_\_\_\_\_  GL  KB  
 Lease Name: \_\_\_\_\_ Well #: \_\_\_\_\_  
 Well Type: (check one)  Oil  Gas  OG  WSW  Other: \_\_\_\_\_  
 SWD Permit #: \_\_\_\_\_  ENHR Permit #: \_\_\_\_\_  
 Gas Storage Permit #: \_\_\_\_\_  
 Spud Date: \_\_\_\_\_ Date Shut-In: \_\_\_\_\_

	Conductor	Surface	Production	Intermediate	Liner	Tubing
Size						
Setting Depth						
Amount of Cement						
Top of Cement						
Bottom of Cement						

Casing Fluid Level from Surface: \_\_\_\_\_ How Determined? \_\_\_\_\_ Date: \_\_\_\_\_  
 Casing Squeeze(s): \_\_\_\_\_ to \_\_\_\_\_ w / \_\_\_\_\_ sacks of cement, \_\_\_\_\_ to \_\_\_\_\_ w / \_\_\_\_\_ sacks of cement. Date: \_\_\_\_\_  
(top) (bottom) (top) (bottom)  
 Do you have a valid Oil & Gas Lease?  Yes  No  
 Depth and Type:  Junk in Hole at \_\_\_\_\_  Tools in Hole at \_\_\_\_\_ Casing Leaks:  Yes  No Depth of casing leak(s): \_\_\_\_\_  
(depth) (depth)  
 Type Completion:  ALT. I  ALT. II Depth of:  DV Tool: \_\_\_\_\_ w / \_\_\_\_\_ sacks of cement  Port Collar: \_\_\_\_\_ w / \_\_\_\_\_ sack of cement  
(depth) (depth)  
 Packer Type: \_\_\_\_\_ Size: \_\_\_\_\_ Inch Set at: \_\_\_\_\_ Feet  
 Total Depth: \_\_\_\_\_ Plug Back Depth: \_\_\_\_\_ Plug Back Method: \_\_\_\_\_

**Geological Data:**

Formation Name	Formation Top	Formation Base	Completion Information
1. _____	At: _____	to _____ Feet	Perforation Interval _____ to _____ Feet or Open Hole Interval _____ to _____ Feet
2. _____	At: _____	to _____ Feet	Perforation Interval _____ to _____ Feet or Open Hole Interval _____ to _____ Feet

UNDER PENALTY OF PERJURY I HEREBY ATTEST THAT THE INFORMATION CONTAINED HEREIN IS TRUE AND CORRECT TO THE BEST OF MY KNOWLEDGE

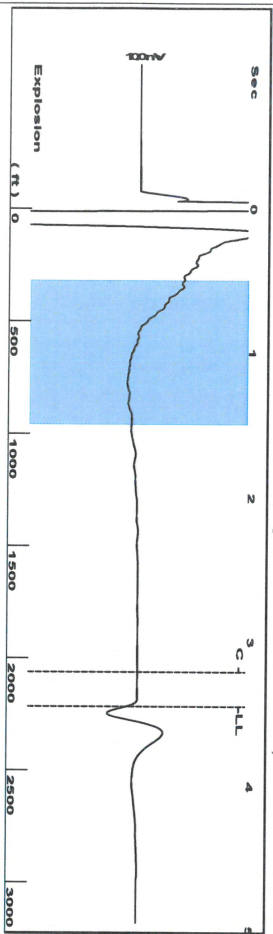
Submitted Electronically

<b>Do NOT Write in This Space - KCC USE ONLY</b>	Date Tested: _____	Results: _____	Date Plugged: _____	Date Repaired: _____	Date Put Back in Service: _____
	Review Completed by: _____ Comments: _____				
TA Approved: <input type="checkbox"/> Yes <input type="checkbox"/> Denied Date: _____					

Mail to the Appropriate KCC Conservation Office:

	KCC District Office #1 - 210 E. Frontview, Suite A, Dodge City, KS 67801	Phone 620.682.7933
	KCC District Office #2 - 3450 N. Rock Road, Building 600, Suite 601, Wichita, KS 67226	Phone 316.337.7400
	KCC District Office #3 - 137 E. 21st St., Chanute, KS 66720	Phone 620.902.6450
	KCC District Office #4 - 2301 E. 13th Street, Hays, KS 67601-2651	Phone 785.261.6250

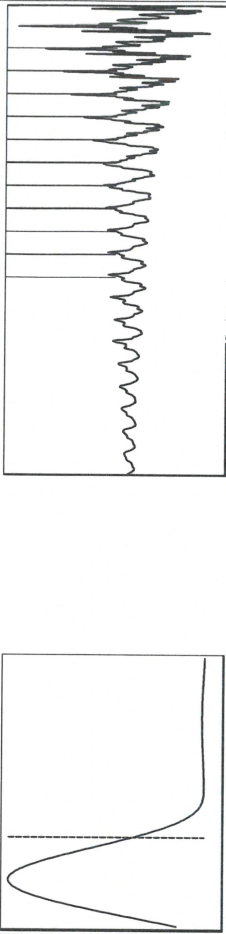
Group: MyWells Well: Dorsey Trust 2-21 (acquired on: 08/14/23 14:54:05 )



Filter Type High Pass  
Manual Acoustic Veloc 1281.63 ft/s  
Automatic Collar Count Yes  
Manual JTS/sec 20.4082

Time 3.446 sec  
Joints 70.5184 Jts  
Depth 2214.28 ft

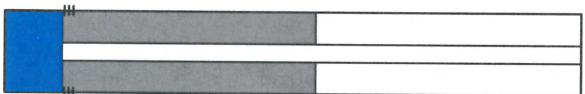
0.5 to 1.5 (Sec) |



**Analysis Method: Automatic**

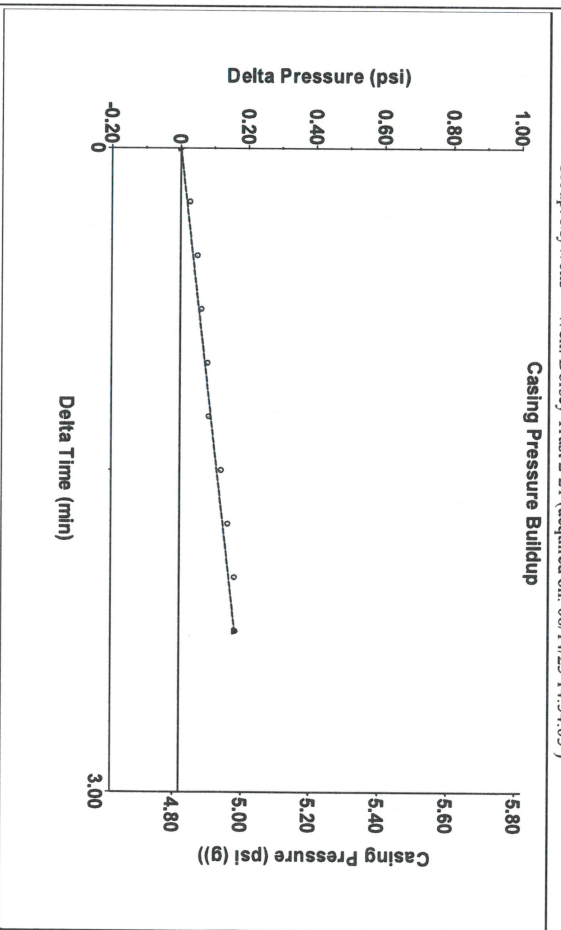
Group: MyWells Well: Dorsey Trust 2-21 (acquired on: 08/14/23 14:54:05 )

Production	Potential	Casing Pressure	Static
Oil -*- BBL/D	4.8 psi (g)	Oil Column Height	MMD 0 ft
Water -*- BBL/D	0.2 psi	Gas/Liquid Interface Pressure	2.25 min
Gas -*- Mscf/D	2.25 min		5.9 psi (g)
IPR Method	Vogel	Liquid Level Depth	Water Column Height
PBHP/SBHP	0.0	2214.28 ft	MMD 2637 ft
Production Efficiency		Pump Intake Depth	Static BHP
Oil 40 deg API		4924.00 ft	1204.7 psi (g)
Water 1.05 Sp.Gr:H2O		Formation Depth	
Gas 0.70 Sp.Gr:AIR		4851.00 ft	
Acoustic Velocity	1285.13 ft/s		



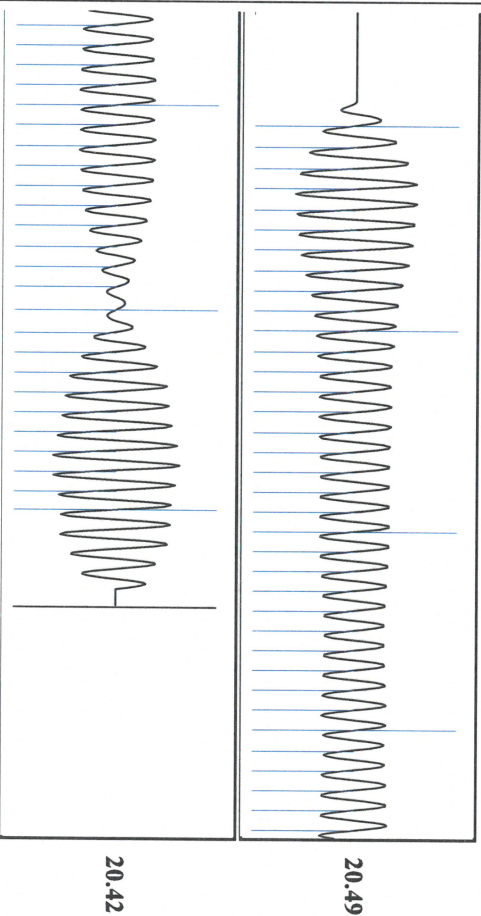
Acoustic Test

Group: MyWells Well: Dorsey Trust 2-21 (acquired on: 08/14/23 14:54:05 )



Change in Pressure 0.16 psi PT 8064  
Change in Time 2.25 min Range 0 - ? psi

Group: MyWells Well: Dorsey Trust 2-21 (acquired on: 08/14/23 14:54:05 )



Acoustic Velocity	1285.13 ft/s	Joints counted	60
Joints Per Second	20.4638 Jts/sec	Joints to liquid level	70.5184
Depth to liquid level	2214.28 ft	Filter Width	18.4082
Automatic Collar Count	Yes	Time to 1st Collar	0.276
			22.4082
			3.208

August 16, 2023

Michael Reilly  
Grand Mesa Operating Company  
1700 N WATERFRONT PKWY BLDG 600  
WICHITA, KS 67206-5514

Re: Temporary Abandonment  
API 15-033-21347-00-00  
DORSEY TRUST 2  
NW/4 Sec.21-33S-16W  
Comanche County, Kansas

Dear Michael Reilly:

"Your temporary abandonment (TA) application for the well listed above has been approved. In accordance with K.A.R. 82-3-111 the TA status of this well will expire 08/16/2024.

- \* If you return this well to service or plug it, please notify the District Office.
- \* If you sell this well you are required to file a Transfer of Operator form, T-1.
- \* If the well will remain temporarily abandoned, you must submit a new TA application, CP-111, before 08/16/2024.

You may contact me at the number above if you have questions.

Very truly yours,

Michael Maier"