

KANSAS CORPORATION COMMISSION
OIL & GAS CONSERVATION DIVISION

TEMPORARY ABANDONMENT WELL APPLICATION

OPERATOR: License#
Name:
Address 1:
Address 2:
City: State: Zip:
Contact Person:
Phone:
Contact Person Email:
Field Contact Person:
Field Contact Person Phone:

API No. 15-
Spot Description:
Sec. Twp. S. R.
GPS Location: Lat: Long:
Datum: NAD27 NAD83 WGS84
County: Elevation:
Lease Name: Well #:
Well Type: Oil Gas OG WSW Other:
SWD Permit #: ENHR Permit #:
Gas Storage Permit #:
Spud Date: Date Shut-In:

Table with 7 columns: Conductor, Surface, Production, Intermediate, Liner, Tubing. Rows include Size, Setting Depth, Amount of Cement, Top of Cement, Bottom of Cement.

Casing Fluid Level from Surface: How Determined? Date:
Casing Squeeze(s): to w / sacks of cement, to w / sacks of cement. Date:
Do you have a valid Oil & Gas Lease? Yes No
Depth and Type: Junk in Hole at Tools in Hole at Casing Leaks: Yes No Depth of casing leak(s):
Type Completion: ALT. I ALT. II Depth of: DV Tool: w / sacks of cement Port Collar: w / sack of cement
Packer Type: Size: Inch Set at: Feet
Total Depth: Plug Back Depth: Plug Back Method:

Geological Date:

Table with 4 columns: Formation Name, Formation Top, Formation Base, Completion Information. Rows 1 and 2.

UNDER PENALTY OF PERJURY I HEREBY ATTEST THAT THE INFORMATION CONTAINED HEREIN IS TRUE AND CORRECT TO THE BEST OF MY KNOWLEDGE

Submitted Electronically

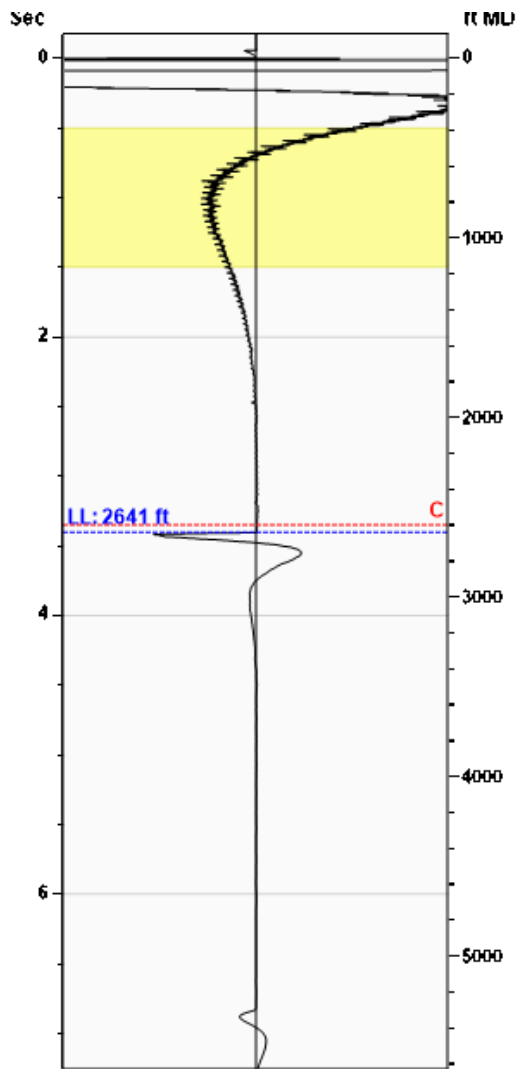
Do NOT Write in This Space - KCC USE ONLY
Date Tested: Results: Date Plugged: Date Repaired: Date Put Back in Service:
Review Completed by: Comments:
TA Approved: Yes Denied Date:

Mail to the Appropriate KCC Conservation Office:

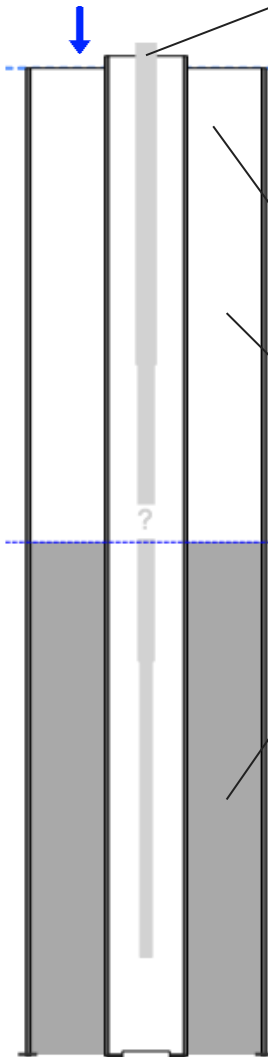
Table with 2 columns: Office Address, Phone. Rows for District Office #1, #2, #3, #4.

Liquid Level 2641 ft MD

Fluid Above Pump 2859 ft TVD  
 Equivalent Gas Free Above Pump 2859 ft TVD



Gun - WG 1402



Production			
Date Entered	07/13/23		
	Current	Potential	
Oil	**	**	BBL/D
Water	**	**	BBL/D
Gas	**	**	Mscf/D
IPR Method	Vogel		
PBHP/SBHP	-0.00		
Producing Efficiency	0.00%		

Casing Pressure	
Pressure	64.5 psi (g)

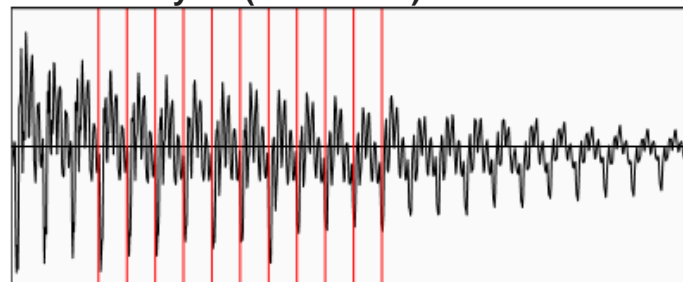
Annular Gas Flow	
Gas Flow	0.0 Mscf/D

Fluid Properties	
% Liquid Above Pump	100.00%
% Liquid Below Pump	**

Depths	
Pump Intake Depth	5500 ft
Formation Depth	5500 ft

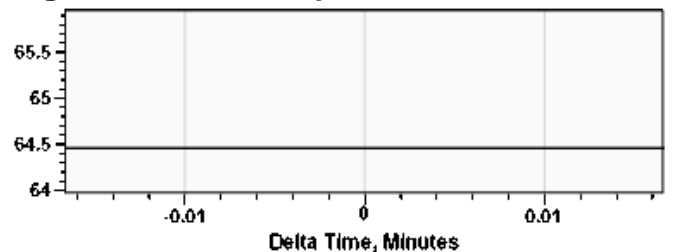
Wellbore Pressures	
PIP	1004.6 psi (g)
PBHP	1004.6 psi (g)
SBHP	**
Gas/Liq Interface	68.5 psi (g)

Collar Analysis (Automatic)



Average Acoustic Velocity 1552 ft/s  
 Average Joints Per Sec. 24.48 Jts/sec  
 Joints To Liquid 83.30 Jts

Casing Pressure Buildup



Casing Pressure 64.5 psi (g)  
 Buildup 0.0 psi (g)  
 Buildup Time 0 sec  
 Gas Gravity from Collar Analysis (Automatic) 0.5500 Air = 1

Comments and Recommendations

Acoustic Test

Echometer Company  
 5001 Ditto Lane  
 Wichita Falls, TX 76302  
 (940) 767-4334  
 info@echometer.com

August 23, 2023

Justin Prater  
StrataKan Exploration, LLC  
100 S MAIN ST  
PLAINVILLE, KS 67663-2234

Re: Temporary Abandonment  
API 15-033-21670-01-00  
CROSBY 3318 1-26H  
SW/4 Sec.26-33S-18W  
Comanche County, Kansas

Dear Justin Prater:

"Your temporary abandonment (TA) application for the well listed above has been approved. In accordance with K.A.R. 82-3-111 the TA status of this well will expire 08/23/2024.

- \* If you return this well to service or plug it, please notify the District Office.
- \* If you sell this well you are required to file a Transfer of Operator form, T-1.
- \* If the well will remain temporarily abandoned, you must submit a new TA application, CP-111, before 08/23/2024.

You may contact me at the number above if you have questions.

Very truly yours,

Michael Maier"