

KANSAS CORPORATION COMMISSION
OIL & GAS CONSERVATION DIVISION

TEMPORARY ABANDONMENT WELL APPLICATION

OPERATOR: License#
Name:
Address 1:
Address 2:
City: State: Zip:
Contact Person:
Phone:
Contact Person Email:
Field Contact Person:
Field Contact Person Phone:

API No. 15-
Spot Description:
Sec. Twp. S. R.
GPS Location: Lat: Long:
Datum: NAD27 NAD83 WGS84
County: Elevation:
Lease Name: Well #:
Well Type: Oil Gas OG WSW Other:
SWD Permit #: ENHR Permit #:
Gas Storage Permit #:
Spud Date: Date Shut-In:

Table with 7 columns: Conductor, Surface, Production, Intermediate, Liner, Tubing. Rows include Size, Setting Depth, Amount of Cement, Top of Cement, Bottom of Cement.

Casing Fluid Level from Surface: How Determined? Date:
Casing Squeeze(s): to w / sacks of cement, to w / sacks of cement. Date:
Do you have a valid Oil & Gas Lease? Yes No
Depth and Type: Junk in Hole at Tools in Hole at Casing Leaks: Yes No Depth of casing leak(s):
Type Completion: ALT. I ALT. II Depth of: DV Tool: w / sacks of cement Port Collar: w / sack of cement
Packer Type: Size: Inch Set at: Feet
Total Depth: Plug Back Depth: Plug Back Method:

Geological Data:

Table with 4 columns: Formation Name, Formation Top, Formation Base, Completion Information. Rows 1 and 2.

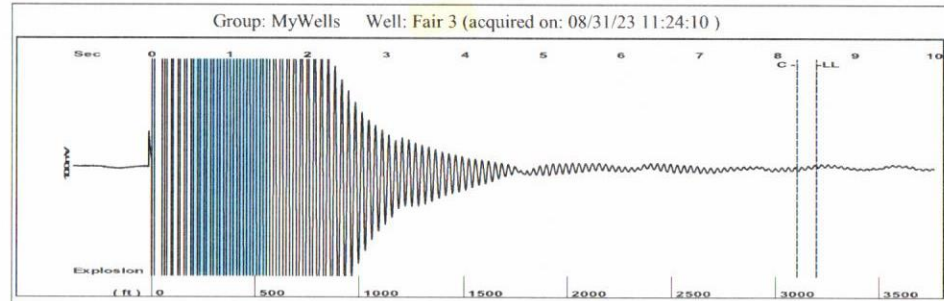
UNDER PENALTY OF PERJURY I HEREBY ATTEST THAT THE INFORMATION CONTAINED HEREIN IS TRUE AND CORRECT TO THE BEST OF MY KNOWLEDGE

Submitted Electronically

Do NOT Write in This Space - KCC USE ONLY
Date Tested: Results: Date Plugged: Date Repaired: Date Put Back in Service:
Review Completed by: Comments:
TA Approved: Yes Denied Date:

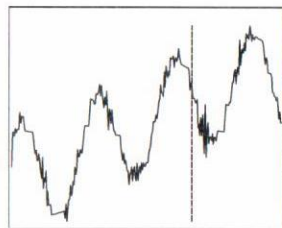
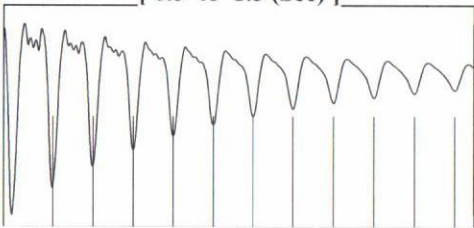
Mail to the Appropriate KCC Conservation Office:

Table with 3 columns: District Office #, Address, Phone. Rows 1-4.

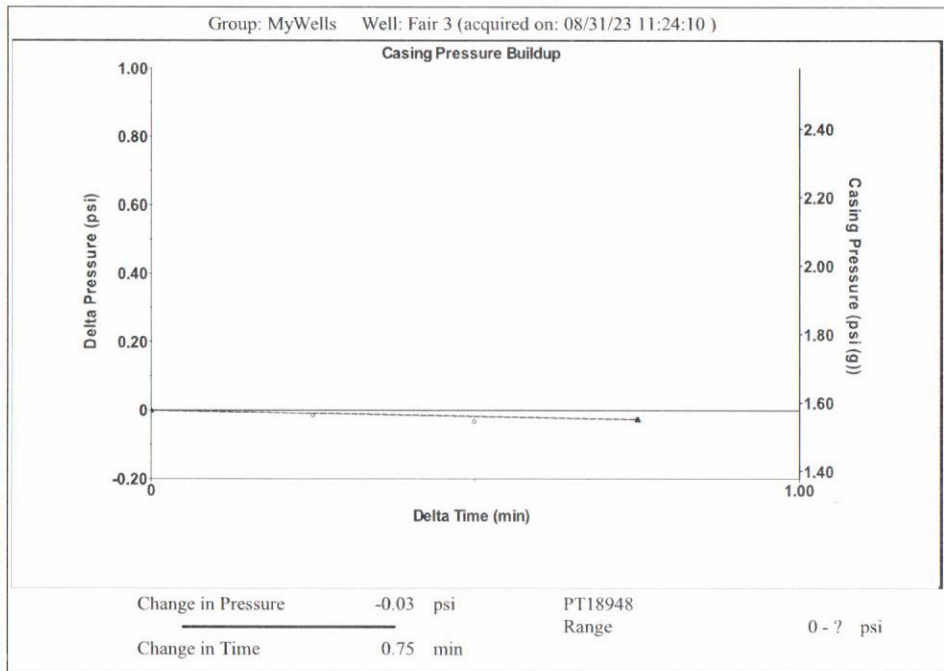


Filter Type High Pass Automatic Collar Count Yes Time 8.5 sec
 Manual Acoustic Veloc740.654 ft/s Manual JTS/sec 11.6822 Joints 100.833 Jts
 Depth 3196.40 ft

[0.5 to 1.5 (Sec)]



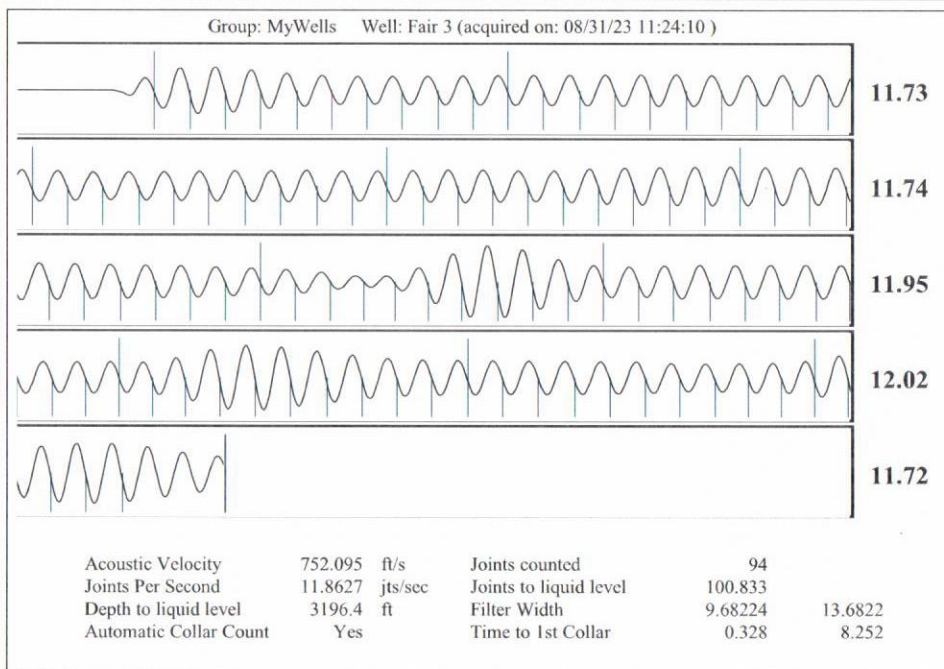
Analysis Method: Automatic



Group: MyWells Well: Fair 3 (acquired on: 08/31/23 11:24:10)

Production	Potential	Casing Pressure		Static
Current	- * - BBL/D	1.6 psi (g)		Oil Column Height
Oil - * -	- * - BBL/D	Casing Pressure Buildup		MD 0 ft
Water - * -	- * - Mscf/D	-0.027 psi		Water Column Height
Gas - * -		0.75 min	MD 144 ft	
IPR Method	Vogel	Gas/Liquid Interface Pressure		
PBHP/SBHP	- * -	3.8 psi (g)		
Production Efficiency	0.0			
Oil 40 deg.API		Liquid Level Depth		
Water 1.05 Sp.Gr.H2O		3196.40 ft		
Gas 1.22 Sp.Gr.AIR		Pump Intake Depth		
		- * - ft		
Acoustic Velocity 752.095 ft/s		Formation Depth		
		3340.00 ft		
		Static BHP		
		69.1 psi (g)		

Acoustic Test



September 01, 2023

DALE OHL
Smith, Richard E. dba Smith Oil Operations
410 N. ADAMS ST
PO BOX 550
HUTCHINSON, KS 67504-0550

Re: Temporary Abandonment
API 15-185-19079-00-00
FAIR 3
SW/4 Sec.15-21S-11W
Stafford County, Kansas

Dear DALE OHL:

"Your temporary abandonment (TA) application for the well listed above has been approved. In accordance with K.A.R. 82-3-111 the TA status of this well will expire 09/01/2024.

- * If you return this well to service or plug it, please notify the District Office.
- * If you sell this well you are required to file a Transfer of Operator form, T-1.
- * If the well will remain temporarily abandoned, you must submit a new TA application, CP-111, before 09/01/2024.

You may contact me at the number above if you have questions.

Very truly yours,

Michael Maier"