

KANSAS CORPORATION COMMISSION
OIL & GAS CONSERVATION DIVISION

TEMPORARY ABANDONMENT WELL APPLICATION

OPERATOR: License#
Name:
Address 1:
Address 2:
City: State: Zip:
Contact Person:
Phone:
Contact Person Email:
Field Contact Person:
Field Contact Person Phone:

API No. 15-
Spot Description:
Sec. Twp. S. R.
GPS Location: Lat: Long:
Datum: NAD27 NAD83 WGS84
County: Elevation:
Lease Name: Well #:
Well Type: Oil Gas OG WSW Other:
SWD Permit #: ENHR Permit #:
Gas Storage Permit #:
Spud Date: Date Shut-In:

Table with 7 columns: Conductor, Surface, Production, Intermediate, Liner, Tubing. Rows include Size, Setting Depth, Amount of Cement, Top of Cement, Bottom of Cement.

Casing Fluid Level from Surface: How Determined? Date:
Casing Squeeze(s): to w / sacks of cement, to w / sacks of cement. Date:
Do you have a valid Oil & Gas Lease? Yes No
Depth and Type: Junk in Hole at Tools in Hole at Casing Leaks: Yes No Depth of casing leak(s):
Type Completion: ALT. I ALT. II Depth of: DV Tool: w / sacks of cement Port Collar: w / sack of cement
Packer Type: Size: Inch Set at: Feet
Total Depth: Plug Back Depth: Plug Back Method:

Geological Date:

Table with 4 columns: Formation Name, Formation Top, Formation Base, Completion Information. Rows 1 and 2.

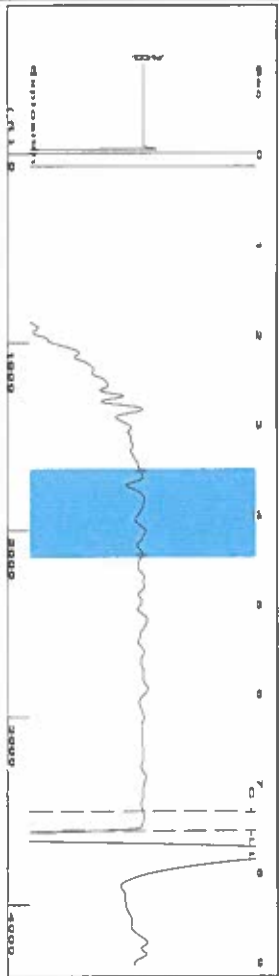
UNDER PENALTY OF PERJURY I HEREBY ATTEST THAT THE INFORMATION CONTAINED HEREIN IS TRUE AND CORRECT TO THE BEST OF MY KNOWLEDGE

Submitted Electronically

Do NOT Write in This Space - KCC USE ONLY
Date Tested: Results: Date Plugged: Date Repaired: Date Put Back in Service:
Review Completed by: Comments:
TA Approved: Yes Denied Date:

Mail to the Appropriate KCC Conservation Office:

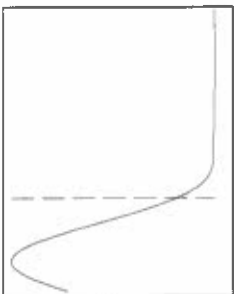
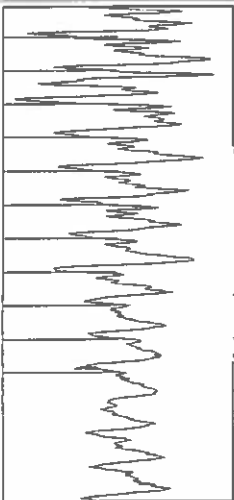
Table with 3 columns: District Office #, Address, Phone. Rows 1-4.



Filter Type High Pass Automatic Collar Count Yes
 Manual Acoustic Velocity 103 N/s Manual JTS/Sec 14.7493

Time 7.537 sec
 Joints 113.871 Jis
 Depth 3609.72 ft

3.5 to 4.5 (Sec) |



Analysis Method: Automatic

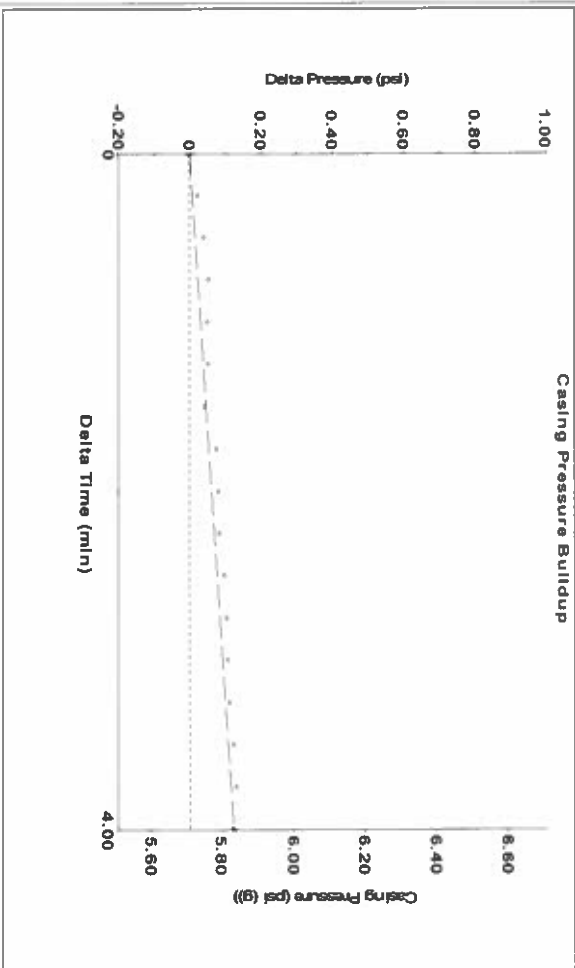
Production	Potential	Casing Pressure	Producing
Current	Oil	5.7 psi (g)	Pump Intake
Water	Water	Casing Pressure Buildup	682.5 psi (g)
Gas	Gas	0.123 psi	Producing BHP
		4.00 min	678.1 psi (g)
IPR Method		Gas/Liquid Interface Pressure	Static BHP
PBHP/SBHP		8.4 psi (g)	
Production Efficiency			
Oil	40 deg.API	Liquid Level Depth	
Water	1.05 Sp.Gr.H2O	3609.72 ft	
Gas	1.02 Sp.Gr.AIR	Pump Intake Depth	
		5715.00 ft	
Acoustic Velocity	957.868 N/s	Formation Depth	
		5701.00 ft	



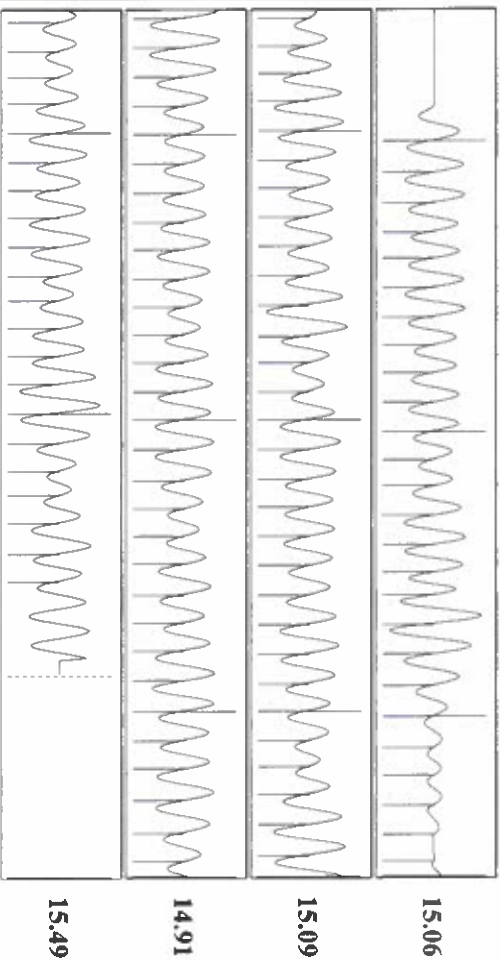
Formation Submergence
 Total Gasous Liquid Column HT (TVL)
 Equivalent Gas Free Liquid HT (TVD)

2105 ft
 2026 ft

9/9/23



Change in Pressure 0.12 psi
 Change in Time 4.00 min
 PT18868
 Range 0 - ? psi



Acoustic Velocity	Joints counted	Time to 1st Collar
957.868 N/s	106	
15.1083 Jis/Sec	113.871	
Depth to liquid level 3609.72 ft	12.7493	
Automatic Collar Count Yes	0.304	

September 11, 2023

Katherine McClurkan
Merit Energy Company, LLC
13727 Noel Road, Suite 1200
Dallas, TX 75240-7362

Re: Temporary Abandonment
API 15-187-20469-00-00
Wilson Unit 1
NW/4 Sec.26-29S-39W
Stanton County, Kansas

Dear Katherine McClurkan:

"Your temporary abandonment (TA) application for the well listed above has been approved. In accordance with K.A.R. 82-3-111 the TA status of this well will expire 09/11/2024.

- * If you return this well to service or plug it, please notify the District Office.
- * If you sell this well you are required to file a Transfer of Operator form, T-1.
- * If the well will remain temporarily abandoned, you must submit a new TA application, CP-111, before 09/11/2024.

You may contact me at the number above if you have questions.

Very truly yours,

Michael Maier"