

KANSAS CORPORATION COMMISSION
OIL & GAS CONSERVATION DIVISION

TEMPORARY ABANDONMENT WELL APPLICATION

OPERATOR: License#
Name:
Address 1:
Address 2:
City: State: Zip:
Contact Person:
Phone:
Contact Person Email:
Field Contact Person:
Field Contact Person Phone:

API No. 15-
Spot Description:
Sec. Twp. S. R.
GPS Location: Lat: Long:
Datum: NAD27 NAD83 WGS84
County: Elevation:
Lease Name: Well #:
Well Type: Oil Gas OG WSW Other:
SWD Permit #: ENHR Permit #:
Gas Storage Permit #:
Spud Date: Date Shut-In:

Table with 7 columns: Conductor, Surface, Production, Intermediate, Liner, Tubing. Rows include Size, Setting Depth, Amount of Cement, Top of Cement, Bottom of Cement.

Casing Fluid Level from Surface: How Determined? Date:
Casing Squeeze(s): to w / sacks of cement, to w / sacks of cement. Date:
Do you have a valid Oil & Gas Lease? Yes No
Depth and Type: Junk in Hole at Tools in Hole at Casing Leaks: Yes No Depth of casing leak(s):
Type Completion: ALT. I ALT. II Depth of: DV Tool: w / sacks of cement Port Collar: w / sack of cement
Packer Type: Size: Inch Set at: Feet
Total Depth: Plug Back Depth: Plug Back Method:

Geological Data:

Table with 4 columns: Formation Name, Formation Top, Formation Base, Completion Information. Rows 1 and 2.

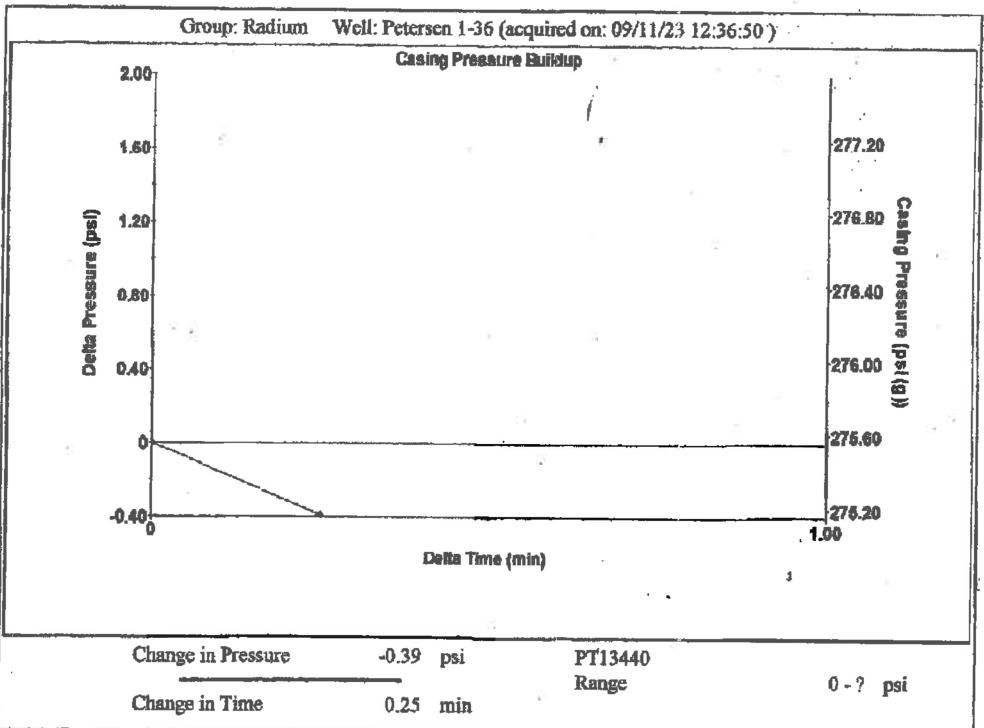
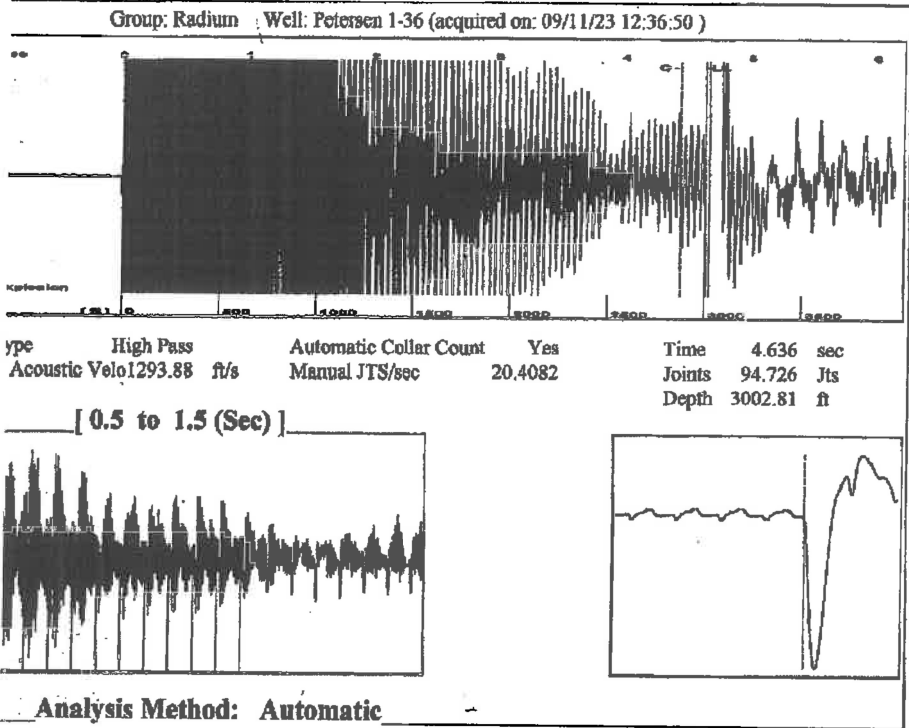
UNDER PENALTY OF PERJURY I HEREBY ATTEST THAT THE INFORMATION CONTAINED HEREIN IS TRUE AND CORRECT TO THE BEST OF MY KNOWLEDGE

Submitted Electronically

Do NOT Write in This Space - KCC USE ONLY
Date Tested: Results: Date Plugged: Date Repaired: Date Put Back in Service:
Review Completed by: Comments:
TA Approved: Yes Denied Date:

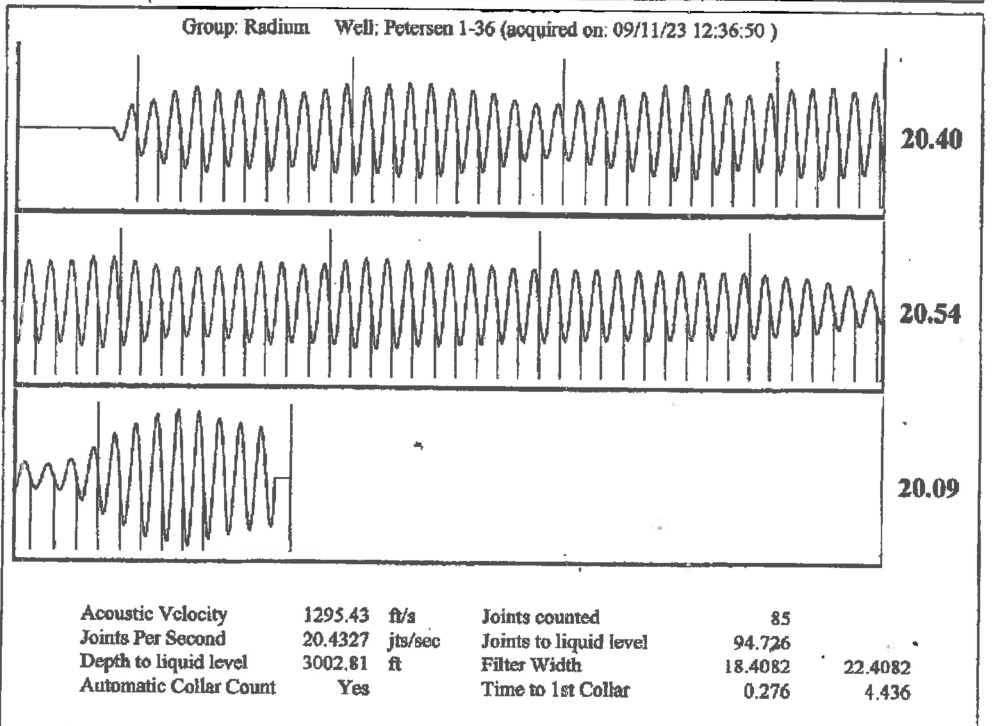
Mail to the Appropriate KCC Conservation Office:

Table with 2 columns: Office Address, Phone. Rows for District Office #1, #2, #3, #4.



Group: Radium Well: Petersen 1-36 (acquired on: 09/11/23 12:36:50)

Production Current	Potential	Casing Pressure	Producing
-. -. BBL/D	-. -. BBL/D	275.6 psi (g)	
-. -. BBL/D	-. -. BBL/D	Casing Pressure Buildup	Annular Gas Flow
-. -. Mscf/D	-. -. Mscf/D	-0.390 psi	0 Mscf/D
		0.25 min	% Liquid
Method	Vogel	Gas/Liquid Interface Pressure	100 %
W/BHP	-. -.	297.0 psi (g)	
Production Efficiency	0.0		
40 deg.API		Liquid Level Depth	
1.05 Sp.Gr.H2O		3002.81 ft	
0.68 Sp.Gr.AIR		Pump Intake Depth	
		-3640.00 ft	
Acoustic Velocity	1295.43 ft/s	Formation Depth	
		3630.00 ft	
Production Submergence			
Gas/Liquid Column HT (TVD)	637 ft	Pump Intake	
Gas Free Liquid HT (TVD)	637 ft	506.8 psi (g)	
Static Test		Producing BHP	
		503.6 psi (g)	
		Static BHP	
		- ? psi (g)	



September 13, 2023

Loveness Mpanje  
F. G. Holl Company L.L.C.  
9431 E CENTRAL STE 100  
WICHITA, KS 67206-2563

Re: Temporary Abandonment  
API 15-165-22064-00-00  
PETERSEN 1-36  
NE/4 Sec.36-19S-16W  
Rush County, Kansas

Dear Loveness Mpanje:

"Your temporary abandonment (TA) application for the well listed above has been approved. In accordance with K.A.R. 82-3-111 the TA status of this well will expire 06/24/2024.

- \* If you return this well to service or plug it, please notify the District Office.
- \* If you sell this well you are required to file a Transfer of Operator form, T-1.
- \* If the well will remain temporarily abandoned, you must submit a new TA application, CP-111, before 06/24/2024.

You may contact me at the number above if you have questions.

Very truly yours,

Michael Maier"