

KANSAS CORPORATION COMMISSION
OIL & GAS CONSERVATION DIVISION

KOLAR Document ID: 1726312

Form CP-111

July 2017

Form must be Typed

Form must be signed

All blanks must be complete

TEMPORARY ABANDONMENT WELL APPLICATION

OPERATOR: License# _____

Name: _____

Address 1: _____

Address 2: _____

City: _____ State: _____ Zip: _____ + _____

Contact Person: _____

Phone: (_____) _____

Contact Person Email: _____

Field Contact Person: _____

Field Contact Person Phone: (_____) _____

API No. 15- _____

Spot Description: _____

____ - ____ - ____ - ____ Sec. _____ Twp. _____ S. R. _____ ☐ E ☐ W

_____ feet from ☐ N / ☐ S Line of Section

_____ feet from ☐ E / ☐ W Line of Section

GPS Location: Lat: _____, Long: _____

(e.g. xx.xxxxx) (e.g. -xxx.xxxxx)

Datum: ☐ NAD27 ☐ NAD83 ☐ WGS84

County: _____ Elevation: _____ ☐ GL ☐ KB

Lease Name: _____ Well #: _____

Well Type: (check one) ☐ Oil ☐ Gas ☐ OG ☐ WSW ☐ Other: _____

☐ SWD Permit #: _____ ☐ ENHR Permit #: _____

☐ Gas Storage Permit #: _____

Spud Date: _____ Date Shut-In: _____

	Conductor	Surface	Production	Intermediate	Liner	Tubing
Size						
Setting Depth						
Amount of Cement						
Top of Cement						
Bottom of Cement						

Casing Fluid Level from Surface: _____ How Determined? _____ Date: _____

Casing Squeeze(s): _____ to _____ w / _____ sacks of cement, _____ to _____ w / _____ sacks of cement. Date: _____

Do you have a valid Oil & Gas Lease? ☐ Yes ☐ No

Depth and Type: ☐ Junk in Hole at _____ ☐ Tools in Hole at _____ Casing Leaks: ☐ Yes ☐ No Depth of casing leak(s): _____

Type Completion: ☐ ALT. I ☐ ALT. II Depth of: ☐ DV Tool: _____ w / _____ sacks of cement ☐ Port Collar: _____ w / _____ sack of cement

Packer Type: _____ Size: _____ Inch Set at: _____ Feet

Total Depth: _____ Plug Back Depth: _____ Plug Back Method: _____

Geological Data:

Formation Name	Formation Top	Formation Base	Completion Information
1. _____	At: _____ to _____ Feet	Perforation Interval _____ to _____ Feet or Open Hole Interval _____ to _____ Feet	
2. _____	At: _____ to _____ Feet	Perforation Interval _____ to _____ Feet or Open Hole Interval _____ to _____ Feet	

UNDER PENALTY OF PERJURY I HEREBY ATTEST THAT THE INFORMATION CONTAINED HEREIN IS TRUE AND CORRECT TO THE BEST OF MY KNOWLEDGE

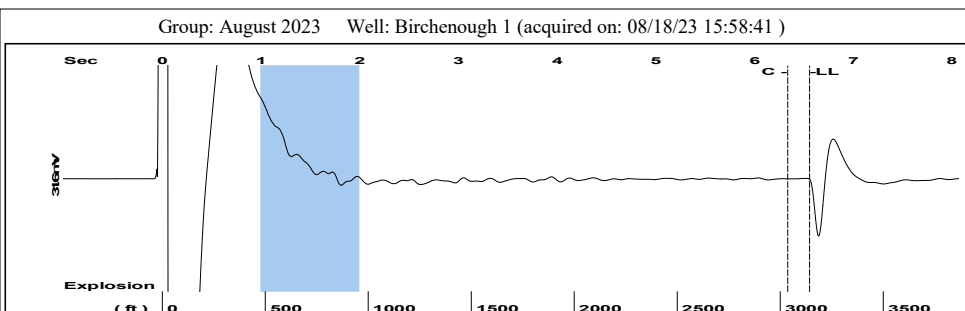
Submitted Electronically

Do NOT Write in This Space - KCC USE ONLY	Date Tested: _____	Results: _____	Date Plugged: _____	Date Repaired: _____	Date Put Back in Service: _____
	Review Completed by: _____ Comments: _____				
TA Approved: <input type="checkbox"/> Yes <input type="checkbox"/> Denied Date: _____					

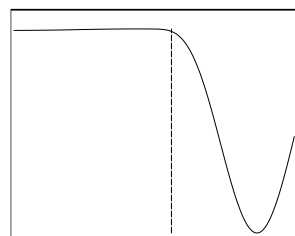
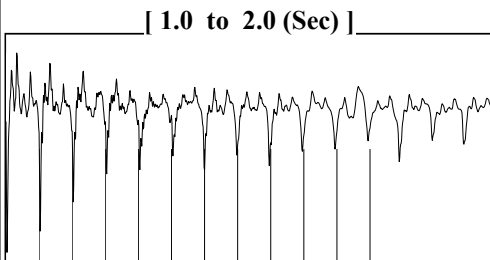
Mail to the Appropriate KCC Conservation Office:

	KCC District Office #1 - 210 E. Frontview, Suite A, Dodge City, KS 67801	Phone 620.682.7933
	KCC District Office #2 - 3450 N. Rock Road, Building 600, Suite 601, Wichita, KS 67226	Phone 316.337.7400
	KCC District Office #3 - 137 E. 21st St., Chanute, KS 66720	Phone 620.902.6450
	KCC District Office #4 - 2301 E. 13th Street, Hays, KS 67601-2651	Phone 785.261.6250

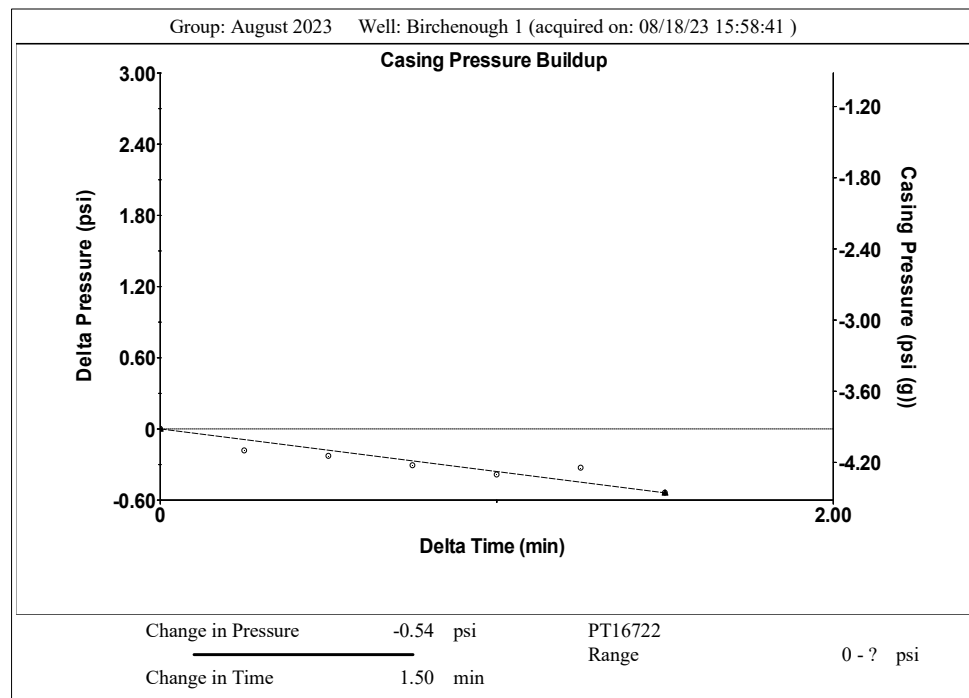
<div>General</div> <div> <div>Well ID125011</div> <div>WellBirchenough 1</div> <div>CompanySandridge</div> <div>Operator- *-</div> <div>Lease NameBirchenough 1</div> <div>Elevation1292.00 ft</div> <div>Production MethodOther</div> <div>Dataset Description</div> </div> <div>Comment</div>						
<div>Surface Unit</div> <div> <div>Manufacturer- *-</div> <div>Unit Class- *-</div> <div>Unit API Number- *-</div> <div>Measured Stroke Length100.000 in</div> <div>RotationCW</div> <div>Counter Balance Effect (Weights Level)- *- Klb</div> <div>Weight Of Counter Weights2000 lb</div> </div> <div> <div>Prime Mover</div> <div> <div>Motor TypeElectric</div> <div>Rated HP- *- HP</div> <div>Run Time24 hr/day</div> <div>MFG/Comment- *-</div> </div> </div> <div> <div>Electric Motor Parameters</div> <div> <div>Rated Full Load AMPS- *-</div> <div>Rated Full Load RPM- *-</div> <div>Synchronous RPM1200</div> <div>Voltage- *-</div> <div>Hertz60</div> <div>Phase3</div> <div>Power Consumption5</div> <div>Power Demand8 \$/KW</div> </div> </div>						
<div> <div>Tubulars</div> <div> <div>Tubing OD2.375 in</div> <div>Casing OD5.500 in</div> <div>Average Joint Length31.700 ft</div> <div>Anchor Depth- *- ft</div> <div>Kelly Bushing5.00 ft</div> </div> <div> <div>Rod String</div> <div> <div>Rod Type- *-</div> <div>Rod Length- *- ft</div> <div>Rod Diameter- *- in</div> <div>Rod Weight0.0 lb</div> </div> </div> <div> <div>Pump</div> <div> <div>Plunger Diameter- *- in</div> <div>Pump Intake Depth- *- ft</div> <div>**Total Rod Length > Pump Depth</div> </div> <div> <div>Polished Rod</div> <div>Polished Rod Diameter- *- in</div> </div> </div> <div> <div>Taper 1</div> <div> <div>Top Taper</div> <div> <div>Total Rod Length0</div> <div>Total Rod Weight0.00</div> </div> <div> <div>Damp Up0.05</div> <div>Damp Down0.05</div> </div> </div> </div></div>						
<div>Conditions</div> <div> <div>Pressure</div> <div> <div>Static BHP2395.4 psi (g)</div> <div>Static BHP MethodAcoustic</div> <div>Static BHP Date03/29/2016</div> </div> <div> <div>Producing BHP2397.7 psi (g)</div> <div>Producing BHP MethodAcoustic</div> <div>Producing BHP Date08/18/2023</div> <div>Formation Depth8422.00 ft</div> </div> <div> <div>Surface Producing Pressures</div> <div> <div>Tubing Pressure- *- psi (g)</div> <div>Casing Pressure-3.9 psi (g)</div> </div> <div> <div>Casing Pressure Buildup</div> <div> <div>Change in Pressure-0.539 psi</div> <div>Over Change in Time1.50 min</div> </div> </div> </div> <div> <div>Production</div> <div> <div>Oil Production0 BBL/D</div> <div>Water Production1 BBL/D</div> <div>Gas Production- *- Mscf/D</div> <div>Production Date06/17/2021</div> </div> <div> <div>Temperatures</div> <div> <div>Surface Temperature70 deg F</div> <div>Bottomhole Temperature150 deg F</div> </div> <div> <div>Fluid Properties</div> <div> <div>Oil API40 deg.API</div> <div>Water Specific Gravity1.05 Sp.Gr.H2O</div> </div> </div> </div></div></div>						



Filter Type High Pass Automatic Collar Count Yes Time 6.558 sec
Manual Acoustic Veloc 932.353 ft/s Manual JTS/sec 14.7059 Joints 99.1326 Jts
Depth 3142.50 ft



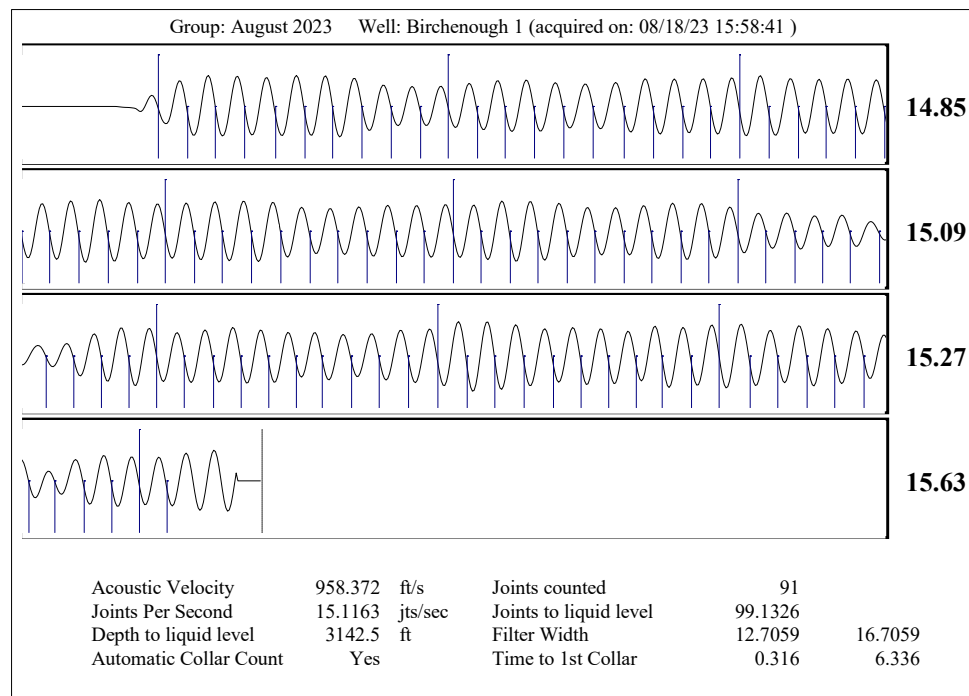
Analysis Method: Automatic



Group: August 2023 Well: Birchenough 1 (acquired on: 08/18/23 15:58:41)

Production	Potential	Casing Pressure	Static
Current			
Oil 0	- * - BBL/D	-3.9 psi (g)	
Water 1	- * - BBL/D	Casing Pressure Buildup	Oil Column Height
Gas - * -	- * - Mscf/D	-0.539 psi	MD 0 ft
		1.50 min	
IPR Method	Vogel	Gas/Liquid Interface Pressure	Water Column Height
PBHP/SBHP	- * -	-2.7 psi (g)	MD 5274 ft
Production Efficiency	0.0		
		Liquid Level Depth	
Oil 40 deg.API		3142.50 ft	
Water 1.05 Sp.Gr.H2O			
Gas 1.01 Sp.Gr.AIR		Tubing Intake Depth	
		- * - ft	
Acoustic Velocity	958.372 ft/s	Formation Depth	
		8422.00 ft	
		Static BHP	
		2395.4 psi (g)	

first shot



Conservation Division
District Office No. 2
3450 N. Rock Road
Building 600, Suite 601
Wichita, KS 67226



Phone: 316-337-7400
<http://kcc.ks.gov/>

Susan K. Duffy, Chair
Dwight D. Keen, Commissioner
Andrew J. French, Commissioner

Laura Kelly, Governor

September 13, 2023

Leah Medrana
SandRidge Exploration and Production LLC
1 E SHERIDAN AVE STE 500
OKLAHOMA CITY, OK 73104-2494

Re: Temporary Abandonment
API 15-077-20167-00-00
BIRCHENOUGH 1
SE/4 Sec.27-33S-06W
Harper County, Kansas

Dear Leah Medrana:

"Your temporary abandonment (TA) application for the well listed above has been approved. In accordance with K.A.R. 82-3-111 the TA status of this well will expire 11/21/2023.

- * If you return this well to service or plug it, please notify the District Office.
- * If you sell this well you are required to file a Transfer of Operator form, T-1.
- * If the well will remain temporarily abandoned, you must submit a new TA application, CP-111, before 11/21/2023.

You may contact me at the number above if you have questions.

Very truly yours,

Nicholas Barkley, ECRS"