

KANSAS CORPORATION COMMISSION
OIL & GAS CONSERVATION DIVISION

TEMPORARY ABANDONMENT WELL APPLICATION

OPERATOR: License#
Name:
Address 1:
Address 2:
City: State: Zip:
Contact Person:
Phone:
Contact Person Email:
Field Contact Person:
Field Contact Person Phone:

API No. 15-
Spot Description:
Sec. Twp. S. R.
GPS Location: Lat: Long:
Datum: NAD27 NAD83 WGS84
County: Elevation:
Lease Name: Well #:
Well Type: Oil Gas OG WSW Other:
SWD Permit #: ENHR Permit #:
Gas Storage Permit #:
Spud Date: Date Shut-In:

Table with 7 columns: Conductor, Surface, Production, Intermediate, Liner, Tubing. Rows include Size, Setting Depth, Amount of Cement, Top of Cement, Bottom of Cement.

Casing Fluid Level from Surface: How Determined? Date:
Casing Squeeze(s): to w / sacks of cement, to w / sacks of cement. Date:
Do you have a valid Oil & Gas Lease? Yes No
Depth and Type: Junk in Hole at Tools in Hole at Casing Leaks: Yes No Depth of casing leak(s):
Type Completion: ALT. I ALT. II Depth of: DV Tool: w / sacks of cement Port Collar: w / sack of cement
Packer Type: Size: Inch Set at: Feet
Total Depth: Plug Back Depth: Plug Back Method:

Geological Data:

Table with 4 columns: Formation Name, Formation Top, Formation Base, Completion Information. Rows 1 and 2.

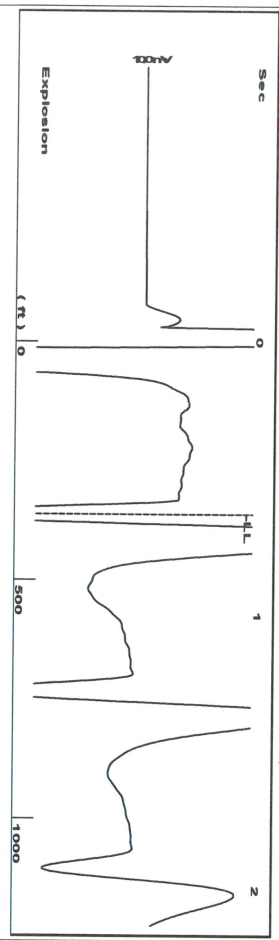
UNDER PENALTY OF PERJURY I HEREBY ATTEST THAT THE INFORMATION CONTAINED HEREIN IS TRUE AND CORRECT TO THE BEST OF MY KNOWLEDGE

Submitted Electronically

Do NOT Write in This Space - KCC USE ONLY
Date Tested: Results: Date Plugged: Date Repaired: Date Put Back in Service:
Review Completed by: Comments:
TA Approved: Yes Denied Date:

Mail to the Appropriate KCC Conservation Office:

Map of Kansas with 4 numbered districts and corresponding office addresses and phone numbers.



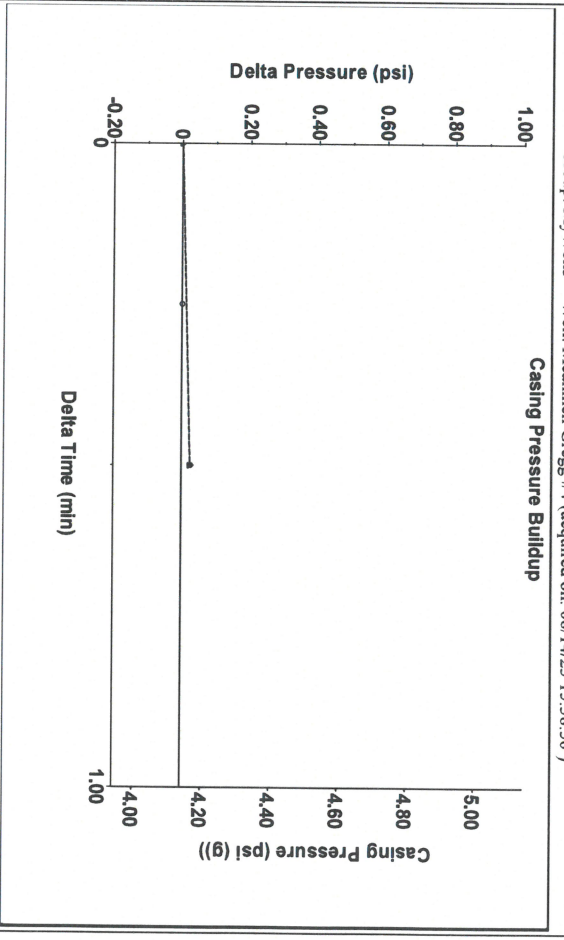
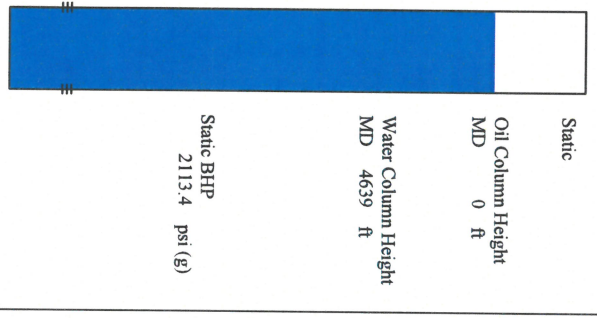
Liquid level calculated with
user supplied Acoustic Velocity

Acoustic Velocity 1150 ft/s

Analysis Method: Acoustic Velocity

Group: MyWells Well: Mcainich-Gregg #4 (acquired on: 08/14/23 15:38:50)

Production	Potential	Casing Pressure	Static
Oil -*-	BBL/D	4.1 psi (g)	Oil Column Height
Water -*-	BBL/D	Casing Pressure Buildup	MID 0 ft
Gas -*-	Mscf/D	0.0 psi	Water Column Height
		0.50 min	MID 4639 ft
IPR Method	Vogel	Gas/Liquid Interface Pressure	
PBHP/SBHP	-*-	4.3 psi (g)	
Production Efficiency	0.0		
Oil 40 deg:API		Liquid Level Depth	
Water 1.05 Sp.Gr:H2O		361.10 ft	
Gas 0.85 Sp.Gr:AIR		Pump Intake Depth	
		-*- ft	
Acoustic Velocity	1150 ft/s	Formation Depth	
		5000.00 ft	



Conservation Division
District Office No. 1
210 E. Frontview, Suite A
Dodge City, KS 67801



Phone: 620-682-7933
<http://kcc.ks.gov/>

Andrew J. French, Chairperson
Dwight D. Keen, Commissioner
Annie Kuether, Commissioner

Laura Kelly, Governor

September 20, 2023

Michael Reilly
Grand Mesa Operating Company
1700 N WATERFRONT PKWY BLDG 600
WICHITA, KS 67206-5514

Re: Temporary Abandonment
API 15-033-20655-00-00
MC ANINCH-GREGG 4
SE/4 Sec.31-32S-16W
Comanche County, Kansas

Dear Michael Reilly:

Your application for Temporary Abandonment (TA) for the above-listed well is denied for the following reasons(s):

High Fluid Level

Pursuant to K.A.R. 82-3-111, the well must be plugged, or returned to service, or obtain temporary abandonment status by 10/20/2023.

This deadline does NOT override any compliance deadline given to you in any Commission Order.

You may contact me if you have any questions.

Sincerely,
Michael Maier
KCC DISTRICT 1