

KANSAS CORPORATION COMMISSION
OIL & GAS CONSERVATION DIVISION

TEMPORARY ABANDONMENT WELL APPLICATION

OPERATOR: License#
Name:
Address 1:
Address 2:
City: State: Zip:
Contact Person:
Phone:
Contact Person Email:
Field Contact Person:
Field Contact Person Phone:

API No. 15-
Spot Description:
Sec. Twp. S. R.
feet from N / S Line of Section
feet from E / W Line of Section
GPS Location: Lat: , Long:
Datum: NAD27 NAD83 WGS84
County: Elevation: GL KB
Lease Name: Well #:
Well Type: (check one) Oil Gas OG WSW Other:
SWD Permit #: ENHR Permit #:
Gas Storage Permit #:
Spud Date: Date Shut-In:

Table with 7 columns: Conductor, Surface, Production, Intermediate, Liner, Tubing. Rows include Size, Setting Depth, Amount of Cement, Top of Cement, Bottom of Cement.

Casing Fluid Level from Surface: How Determined? Date:
Casing Squeeze(s): to w / sacks of cement, to w / sacks of cement. Date:
Do you have a valid Oil & Gas Lease? Yes No
Depth and Type: Junk in Hole at Tools in Hole at Casing Leaks: Yes No Depth of casing leak(s):
Type Completion: ALT. I ALT. II Depth of: DV Tool: w / sacks of cement Port Collar: w / sack of cement
Packer Type: Size: Inch Set at: Feet
Total Depth: Plug Back Depth: Plug Back Method:

Geological Date:

Table with 4 columns: Formation Name, Formation Top, Formation Base, Completion Information. Rows 1 and 2.

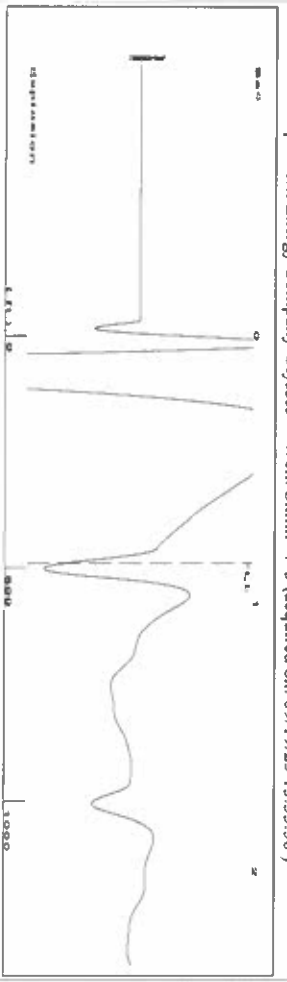
UNDER PENALTY OF PERJURY I HEREBY ATTEST THAT THE INFORMATION CONTAINED HEREIN IS TRUE AND CORRECT TO THE BEST OF MY KNOWLEDGE

Submitted Electronically

Do NOT Write in This Space - KCC USE ONLY
Date Tested: Results: Date Plugged: Date Repaired: Date Put Back in Service:
Review Completed by: Comments:
TA Approved: Yes Denied Date:

Mail to the Appropriate KCC Conservation Office:

Table with 3 columns: District Office #, Address, Phone. Rows 1-4.



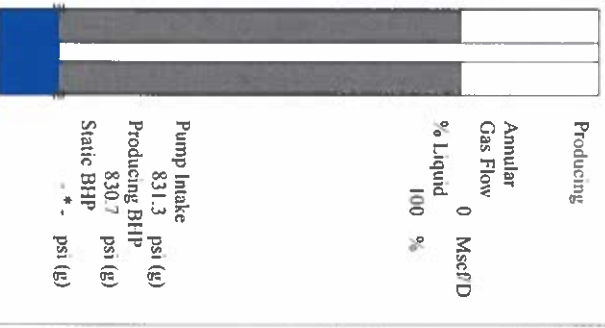
Liquid level calculated with user supplied Acoustic Velocity

Acoustic Velocity 1150 ft/s

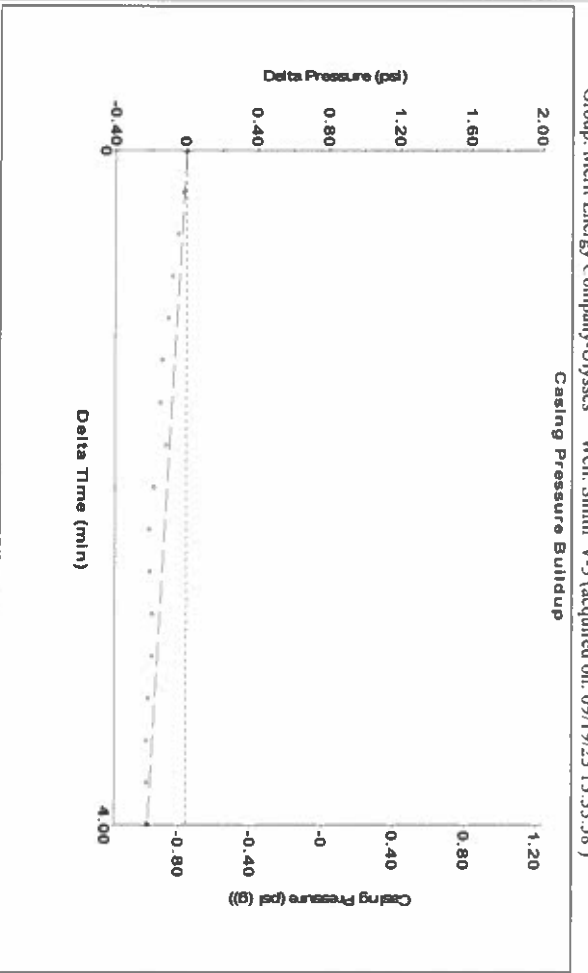
**Analysis Method: Acoustic Velocity**

Group: Merit Energy Company-Ulysses Well: Smith V-3 (acquired on: 09/19/23 13:33:58 )

Production Current	Potential	Casing Pressure	Producing
Oil -*-	-*- BBL/D	-0.8 psi (g)	Annular
Water -*-	-*- BBL/D	-0.215 psi	Gas Flow
Gas -*-	-*- Mscf/D	4.00 min	% Liquid
IPR Method	Vogel	Gas/Liquid Interface Pressure	0 Mscf/D
PBHP/SBHP	-*-	-0.6 psi (g)	% Liquid
Production Efficiency	0.0	Liquid Level Depth	100 %
Oil 40 deg API		489.90 ft	
Water 1.05 Sp.Gr:H2O		Pump Intake Depth	
Gas 0.85 Sp.Gr: AIR		2990.00 ft	
Acoustic Velocity	1150 ft/s	Formation Depth	
		2988.00 ft	



Formation Submergence  
 Total Gaseous Liquid Column HT (TVD) 2500 ft  
 Equivalent Gas Free Liquid HT (TVD) 2500 ft  
 9/19/23B



Group: Merit Energy Company-Ulysses Well: Smith V-3 (acquired on: 09/19/23 13:33:58 )

**Entered Acoustic Velocity for Liquid Level depth determination**

Conservation Division  
District Office No. 1  
210 E. Frontview, Suite A  
Dodge City, KS 67801



Phone: 620-682-7933  
<http://kcc.ks.gov/>

Andrew J. French, Chairperson  
Dwight D. Keen, Commissioner  
Annie Kuether, Commissioner

Laura Kelly, Governor

September 21, 2023

Katherine McClurkan  
Merit Energy Company, LLC  
13727 NOEL ROAD, SUITE 1200  
DALLAS, TX 75240-7362

Re: Temporary Abandonment  
API 15-067-20377-00-00  
Smith V 3  
NE/4 Sec.25-27S-36W  
Grant County, Kansas

Dear Katherine McClurkan:

"Your temporary abandonment (TA) application for the well listed above has been approved. In accordance with K.A.R. 82-3-111 the TA status of this well will expire 09/21/2024.

- \* If you return this well to service or plug it, please notify the District Office.
- \* If you sell this well you are required to file a Transfer of Operator form, T-1.
- \* If the well will remain temporarily abandoned, you must submit a new TA application, CP-111, before 09/21/2024.

You may contact me at the number above if you have questions.

Very truly yours,

Michael Maier"