

KANSAS CORPORATION COMMISSION
OIL & GAS CONSERVATION DIVISION

TEMPORARY ABANDONMENT WELL APPLICATION

OPERATOR: License#
Name:
Address 1:
Address 2:
City: State: Zip:
Contact Person:
Phone:
Contact Person Email:
Field Contact Person:
Field Contact Person Phone:

API No. 15-
Spot Description:
Sec. Twp. S. R.
GPS Location: Lat: Long:
Datum: NAD27 NAD83 WGS84
County: Elevation:
Lease Name: Well #:
Well Type: Oil Gas OG WSW Other:
SWD Permit #: ENHR Permit #:
Gas Storage Permit #:
Spud Date: Date Shut-In:

Table with 7 columns: Conductor, Surface, Production, Intermediate, Liner, Tubing. Rows include Size, Setting Depth, Amount of Cement, Top of Cement, Bottom of Cement.

Casing Fluid Level from Surface: How Determined? Date:
Casing Squeeze(s): to w / sacks of cement, to w / sacks of cement. Date:
Do you have a valid Oil & Gas Lease? Yes No
Depth and Type: Junk in Hole at Tools in Hole at Casing Leaks: Yes No Depth of casing leak(s):
Type Completion: ALT. I ALT. II Depth of: DV Tool: w / sacks of cement Port Collar: w / sack of cement
Packer Type: Size: Inch Set at: Feet
Total Depth: Plug Back Depth: Plug Back Method:

Geological Date:

Table with 4 columns: Formation Name, Formation Top, Formation Base, Completion Information. Rows 1 and 2.

UNDER PENALTY OF PERJURY I HEREBY ATTEST THAT THE INFORMATION CONTAINED HEREIN IS TRUE AND CORRECT TO THE BEST OF MY KNOWLEDGE

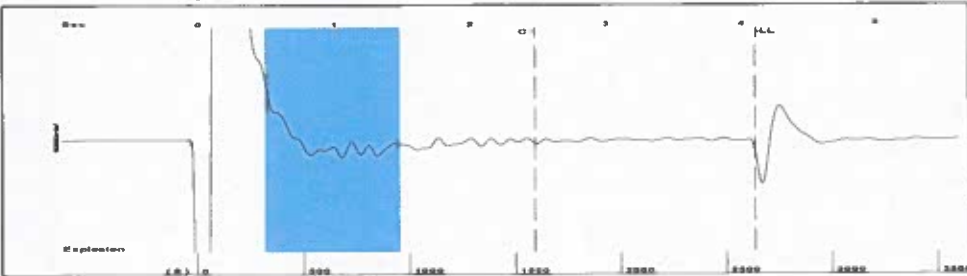
Submitted Electronically

Do NOT Write in This Space - KCC USE ONLY
Date Tested: Results: Date Plugged: Date Repaired: Date Put Back in Service:
Review Completed by: Comments:
TA Approved: Yes Denied Date:

Mail to the Appropriate KCC Conservation Office:

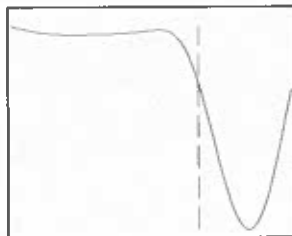
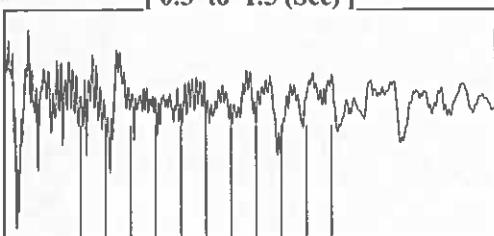
Table with 2 columns: Office Address, Phone. Rows for District Office #1, #2, #3, #4.

Group: TA'D WELLS Well: FOUTS A-1 (acquired on: 09/12/23 10:35:45)



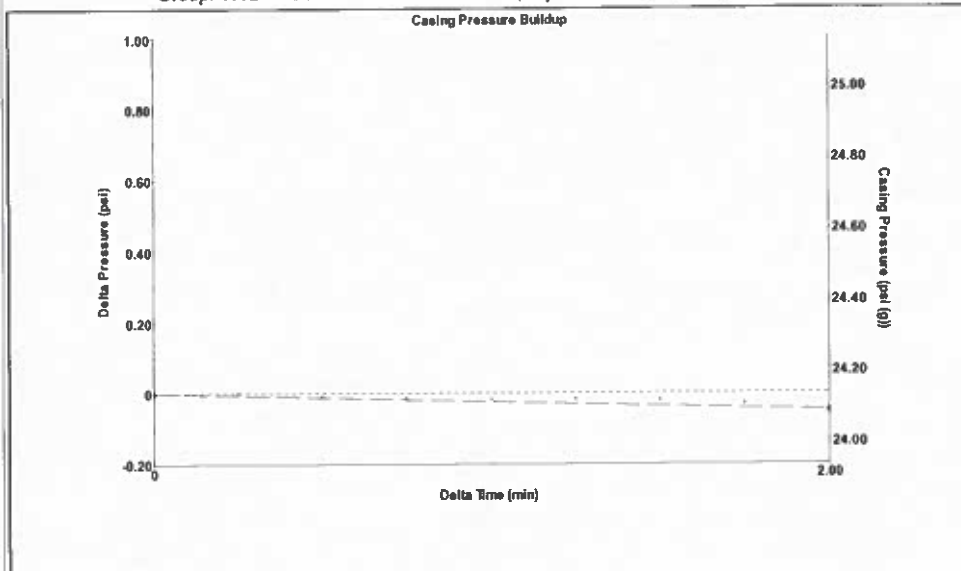
Filter Type High Pass Automatic Collar Count Yes Time 4.109 sec
 Manual Acoustic Velo 1243.14 ft/s Manual JTS/sec 19.6078 Joints 83.0864 Jts
 Depth 2633.84 ft

[0.5 to 1.5 (Sec)]



Analysis Method: Automatic

Group: TA'D WELLS Well: FOUTS A-1 (acquired on: 09/12/23 10:35:45)



Change in Pressure -0.05 psi PT10411 Range 0 - ? psi
 Change in Time 2.00 min

Group: TA'D WELLS Well: FOUTS A-1 (acquired on: 09/12/23 10:35:45)

Production Current	Potential	Casing Pressure
Oil - * -	- * - BBL/D	24.1 psi (g)
Water - * -	- * - BBL/D	Casing Pressure Buildup
Gas - * -	- * - Mscf/D	-0.050 psi
		2.00 min
IPR Method	Vogel	Gas/Liquid Interface Pressure
PBHP/SBHP	- * -	26.7 psi (g)
Production Efficiency	0.0	
		Liquid Level Depth
Oil 40 deg.API		2633.84 ft
Water 1.05 Sp.Gr.H2O		Pump Intake Depth
Gas 0.72 Sp.Gr.AIR		2977.00 ft
Acoustic Velocity	1281.99 ft/s	Formation Depth
		2995.00 ft

Producing

Annular Gas Flow 0 Mscf/D

% Liquid 100 %

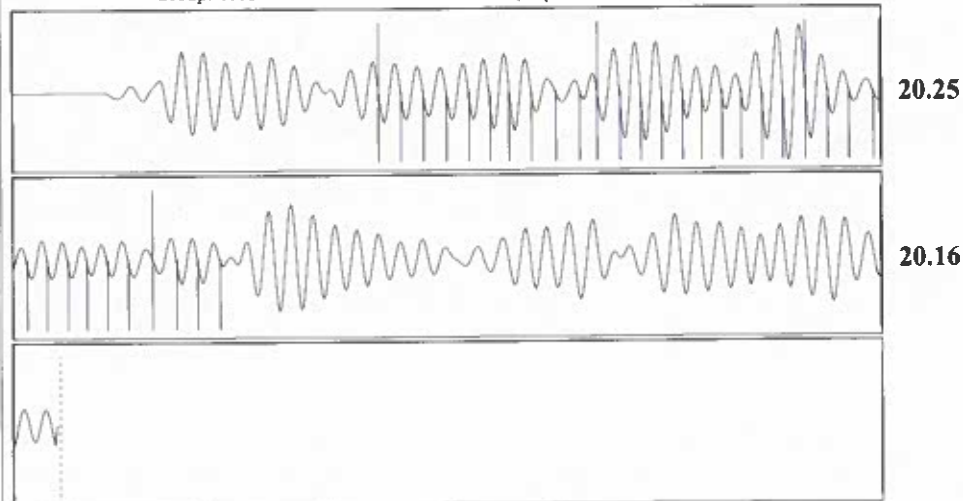
Pump Intake 142.7 psi (g)

Producing BHP 150.8 psi (g)

Static BHP - * - psi (g)



Group: TA'D WELLS Well: FOUTS A-1 (acquired on: 09/12/23 10:35:45)



Acoustic Velocity	1281.99 ft/s	Joints counted	33
Joints Per Second	20.2206 jts/sec	Joints to liquid level	83.0864
Depth to liquid level	2633.84 ft	Filter Width	17.6078 21.6078
Automatic Collar Count	Yes	Time to 1st Collar	0.848 2.48

September 28, 2023

Katherine McClurkan
Merit Energy Company, LLC
13727 Noel Road, Suite 1200
Dallas, TX 75240-7362

Re: Temporary Abandonment
API 15-129-20356-00-01
Fouts A 1
NE/4 Sec.11-34S-40W
Morton County, Kansas

Dear Katherine McClurkan:

"Your temporary abandonment (TA) application for the well listed above has been approved. In accordance with K.A.R. 82-3-111 the TA status of this well will expire 09/28/2024.

- * If you return this well to service or plug it, please notify the District Office.
- * If you sell this well you are required to file a Transfer of Operator form, T-1.
- * If the well will remain temporarily abandoned, you must submit a new TA application, CP-111, before 09/28/2024.

You may contact me at the number above if you have questions.

Very truly yours,

Michael Maier"