

KANSAS CORPORATION COMMISSION  
OIL & GAS CONSERVATION DIVISION

TEMPORARY ABANDONMENT WELL APPLICATION

OPERATOR: License# \_\_\_\_\_  
 Name: \_\_\_\_\_  
 Address 1: \_\_\_\_\_  
 Address 2: \_\_\_\_\_  
 City: \_\_\_\_\_ State: \_\_\_\_\_ Zip: \_\_\_\_\_ + \_\_\_\_\_  
 Contact Person: \_\_\_\_\_  
 Phone: ( \_\_\_\_\_ ) \_\_\_\_\_  
 Contact Person Email: \_\_\_\_\_  
 Field Contact Person: \_\_\_\_\_  
 Field Contact Person Phone: ( \_\_\_\_\_ ) \_\_\_\_\_

API No. 15- \_\_\_\_\_  
 Spot Description: \_\_\_\_\_  
 \_\_\_\_\_ - \_\_\_\_\_ - \_\_\_\_\_ - \_\_\_\_\_ Sec. \_\_\_\_\_ Twp. \_\_\_\_\_ S. R. \_\_\_\_\_  E  W  
 \_\_\_\_\_ feet from  N /  S Line of Section  
 \_\_\_\_\_ feet from  E /  W Line of Section  
 GPS Location: Lat: \_\_\_\_\_, Long: \_\_\_\_\_  
(e.g. xx.xxxxx) (e.g. -xxx.xxxxx)  
 Datum:  NAD27  NAD83  WGS84  
 County: \_\_\_\_\_ Elevation: \_\_\_\_\_  GL  KB  
 Lease Name: \_\_\_\_\_ Well #: \_\_\_\_\_  
 Well Type: (check one)  Oil  Gas  OG  WSW  Other: \_\_\_\_\_  
 SWD Permit #: \_\_\_\_\_  ENHR Permit #: \_\_\_\_\_  
 Gas Storage Permit #: \_\_\_\_\_  
 Spud Date: \_\_\_\_\_ Date Shut-In: \_\_\_\_\_

	Conductor	Surface	Production	Intermediate	Liner	Tubing
Size						
Setting Depth						
Amount of Cement						
Top of Cement						
Bottom of Cement						

Casing Fluid Level from Surface: \_\_\_\_\_ How Determined? \_\_\_\_\_ Date: \_\_\_\_\_  
 Casing Squeeze(s): \_\_\_\_\_ to \_\_\_\_\_ w / \_\_\_\_\_ sacks of cement, \_\_\_\_\_ to \_\_\_\_\_ w / \_\_\_\_\_ sacks of cement. Date: \_\_\_\_\_  
(top) (bottom) (top) (bottom)  
 Do you have a valid Oil & Gas Lease?  Yes  No  
 Depth and Type:  Junk in Hole at \_\_\_\_\_  Tools in Hole at \_\_\_\_\_ Casing Leaks:  Yes  No Depth of casing leak(s): \_\_\_\_\_  
(depth) (depth)  
 Type Completion:  ALT. I  ALT. II Depth of:  DV Tool: \_\_\_\_\_ w / \_\_\_\_\_ sacks of cement  Port Collar: \_\_\_\_\_ w / \_\_\_\_\_ sack of cement  
(depth) (depth)  
 Packer Type: \_\_\_\_\_ Size: \_\_\_\_\_ Inch Set at: \_\_\_\_\_ Feet  
 Total Depth: \_\_\_\_\_ Plug Back Depth: \_\_\_\_\_ Plug Back Method: \_\_\_\_\_

**Geological Data:**

Formation Name	Formation Top	Formation Base	Completion Information
1. _____	At: _____	to _____ Feet	Perforation Interval _____ to _____ Feet or Open Hole Interval _____ to _____ Feet
2. _____	At: _____	to _____ Feet	Perforation Interval _____ to _____ Feet or Open Hole Interval _____ to _____ Feet

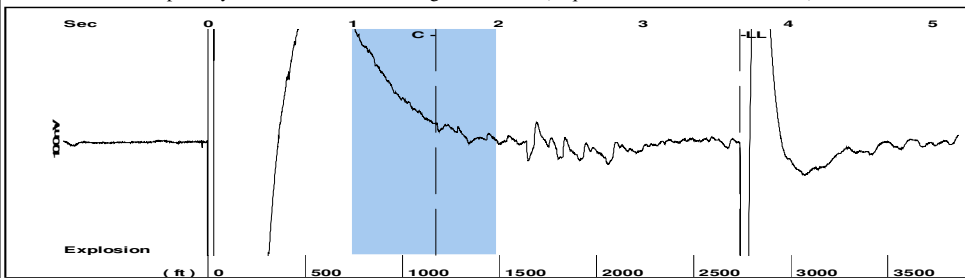
UNDER PENALTY OF PERJURY I HEREBY ATTEST THAT THE INFORMATION CONTAINED HEREIN IS TRUE AND CORRECT TO THE BEST OF MY KNOWLEDGE

Submitted Electronically

<b>Do NOT Write in This Space - KCC USE ONLY</b>	Date Tested: _____	Results: _____	Date Plugged: _____	Date Repaired: _____	Date Put Back in Service: _____
	Review Completed by: _____ Comments: _____				
TA Approved: <input type="checkbox"/> Yes <input type="checkbox"/> Denied Date: _____					

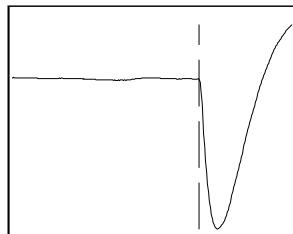
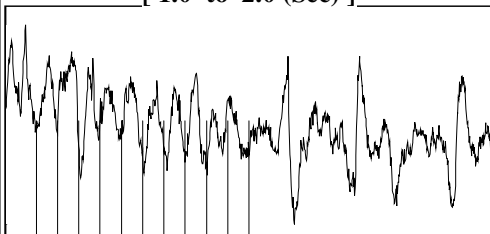
Mail to the Appropriate KCC Conservation Office:

	KCC District Office #1 - 210 E. Frontview, Suite A, Dodge City, KS 67801	Phone 620.682.7933
	KCC District Office #2 - 3450 N. Rock Road, Building 600, Suite 601, Wichita, KS 67226	Phone 316.337.7400
	KCC District Office #3 - 137 E. 21st St., Chanute, KS 66720	Phone 620.902.6450
	KCC District Office #4 - 2301 E. 13th Street, Hays, KS 67601-2651	Phone 785.261.6250

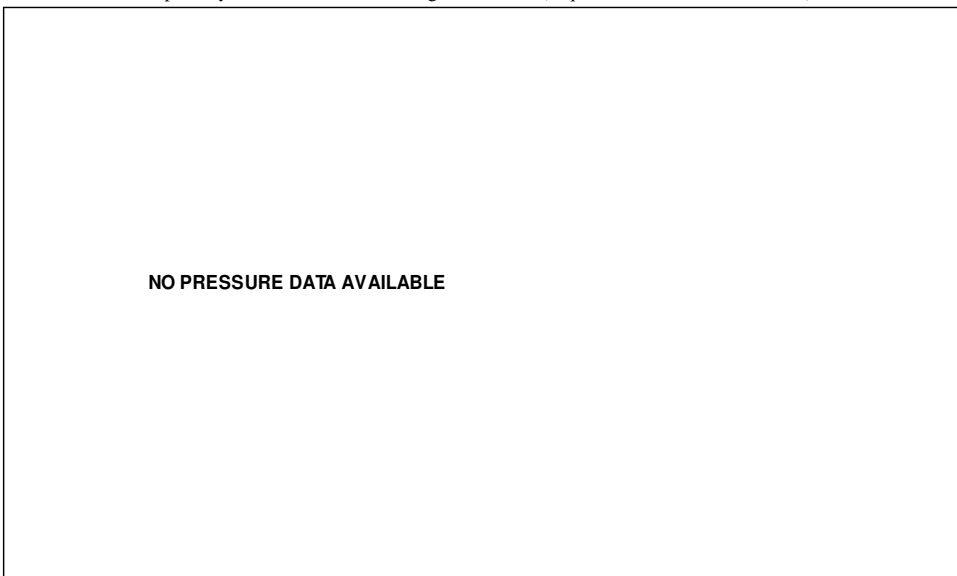


Filter Type High Pass Automatic Collar Count Yes Time 3.672 sec  
 Manual Acoustic Velocity 1450.8 ft/s Manual JTS/sec 22.8833 Joints 86.4 Jts  
 Depth 2738.88 ft

[ 1.0 to 2.0 (Sec) ]

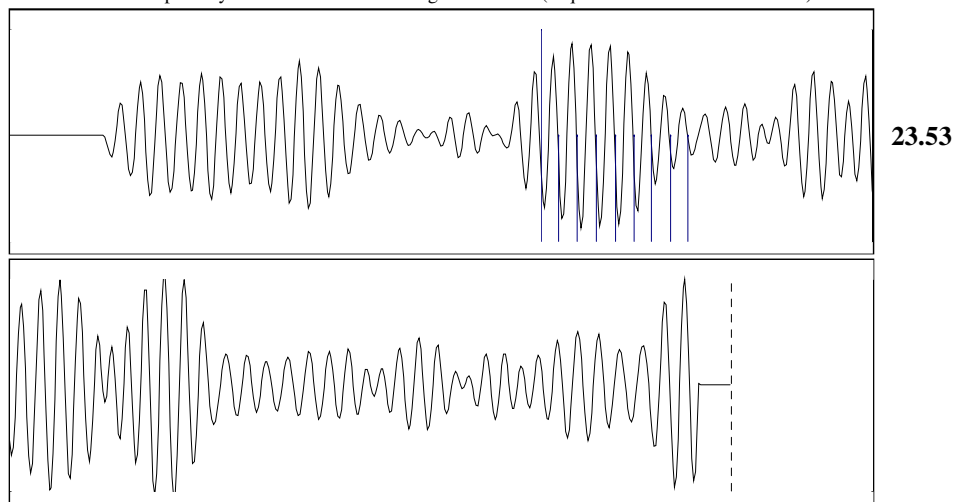


Analysis Method: Automatic



Change in Pressure 0.44 psi PT15262  
 Range 0 - ? psi  
 Change in Time 0.50 min

<p>Production Current Potential</p> <p>Oil - * - 0.0 BBL/D</p> <p>Water - * - 0.0 BBL/D</p> <p>Gas - * - 0.0 Mscf/D</p> <p>IPR Method Vogel</p> <p>PBHP/SBHP 0.24</p> <p>Production Efficiency 90.8</p> <p>Oil 40 deg.API</p> <p>Water 1.05 Sp.Gr.H2O</p> <p>Gas 0.55 Sp.Gr.AIR</p> <p>Acoustic Velocity 1491.76 ft/s</p> <p>Formation Submergence</p> <p>Total Gaseous Liquid Column HT (TVD) 1096 ft</p> <p>Equivalent Gas Free Liquid HT (TVD) 393 ft</p> <p>Acoustic Test</p>	<p>Casing Pressure -0.3 psi (g)</p> <p>Casing Pressure Buildup 0.4 psi</p> <p>Gas/Liquid Interface Pressure 0.50 min</p> <p>0.4 psi (g)</p> <p>Liquid Level Depth 2738.88 ft</p> <p>Pump Intake Depth - * - ft</p> <p>Formation Depth 3835.00 ft</p>		<p>Producing</p> <p>Annular Gas Flow 38 Mscf/D</p> <p>% Liquid 36 %</p> <p>Pump Intake - * - psi (g)</p> <p>Producing BHP 180.2 psi (g)</p> <p>Static BHP 810.4 psi (g)</p>
---	--	--	---



Acoustic Velocity 1491.76 ft/s Joints counted 8  
 Joints Per Second 23.5294 jts/sec Joints to liquid level 86.4  
 Depth to liquid level 2738.88 ft Filter Width 20.8833 24.8833  
 Automatic Collar Count Yes Time to 1st Collar 1.232 1.572

Conservation Division  
District Office No. 2  
3450 N. Rock Road  
Building 600, Suite 601  
Wichita, KS 67226



Phone: 316-337-7400  
<http://kcc.ks.gov/>

Andrew J. French, Chairperson  
Dwight D. Keen, Commissioner  
Annie Kuether, Commissioner

Laura Kelly, Governor

September 29, 2023

Michael E. Novy  
Novy Oil & Gas, Inc.  
PO BOX 559  
GODDARD, KS 67052-0559

Re: Temporary Abandonment  
API 15-155-21393-00-00  
STRAIGHTMAN 1  
NW/4 Sec.30-23S-10W  
Reno County, Kansas

Dear Michael E. Novy:

"Your temporary abandonment (TA) application for the well listed above has been approved. In accordance with K.A.R. 82-3-111 the TA status of this well will expire 09/01/2024.

- \* If you return this well to service or plug it, please notify the District Office.
- \* If you sell this well you are required to file a Transfer of Operator form, T-1.
- \* If the well will remain temporarily abandoned, you must submit a new TA application, CP-111, before 09/01/2024.

You may contact me at the number above if you have questions.

Very truly yours,

Virgil Clothier"