

KANSAS CORPORATION COMMISSION
OIL & GAS CONSERVATION DIVISION

Form must be Typed
Form must be signed

TEMPORARY ABANDONMENT WELL APPLICATION

All blanks must be complete

OPERATOR: License#
Name:
Address 1:
Address 2:
City: State: Zip:
Contact Person:
Phone:
Contact Person Email:
Field Contact Person:
Field Contact Person Phone:

API No. 15-
Spot Description:
Sec. Twp. S. R.
feet from N / S Line of Section
feet from E / W Line of Section
GPS Location: Lat: , Long:
Datum: NAD27 NAD83 WGS84
County: Elevation: GL KB
Lease Name: Well #:
Well Type: (check one) Oil Gas OG WSW Other:
SWD Permit #: ENHR Permit #:
Gas Storage Permit #:
Spud Date: Date Shut-In:

Table with 7 columns: Conductor, Surface, Production, Intermediate, Liner, Tubing. Rows include Size, Setting Depth, Amount of Cement, Top of Cement, Bottom of Cement.

Casing Fluid Level from Surface: How Determined? Date:
Casing Squeeze(s): to w / sacks of cement, to w / sacks of cement. Date:
Do you have a valid Oil & Gas Lease? Yes No
Depth and Type: Junk in Hole at Tools in Hole at Casing Leaks: Yes No Depth of casing leak(s):
Type Completion: ALT. I ALT. II Depth of: DV Tool: w / sacks of cement Port Collar: w / sack of cement
Packer Type: Size: Inch Set at: Feet
Total Depth: Plug Back Depth: Plug Back Method:

Geological Data:

Table with 4 columns: Formation Name, Formation Top, Formation Base, Completion Information. Rows 1 and 2.

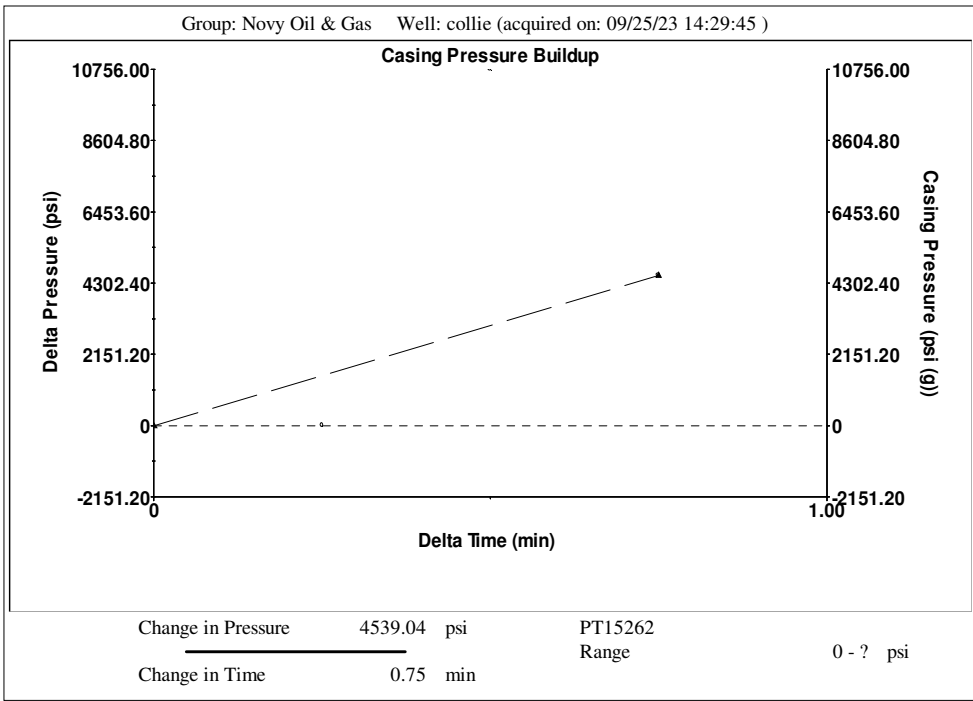
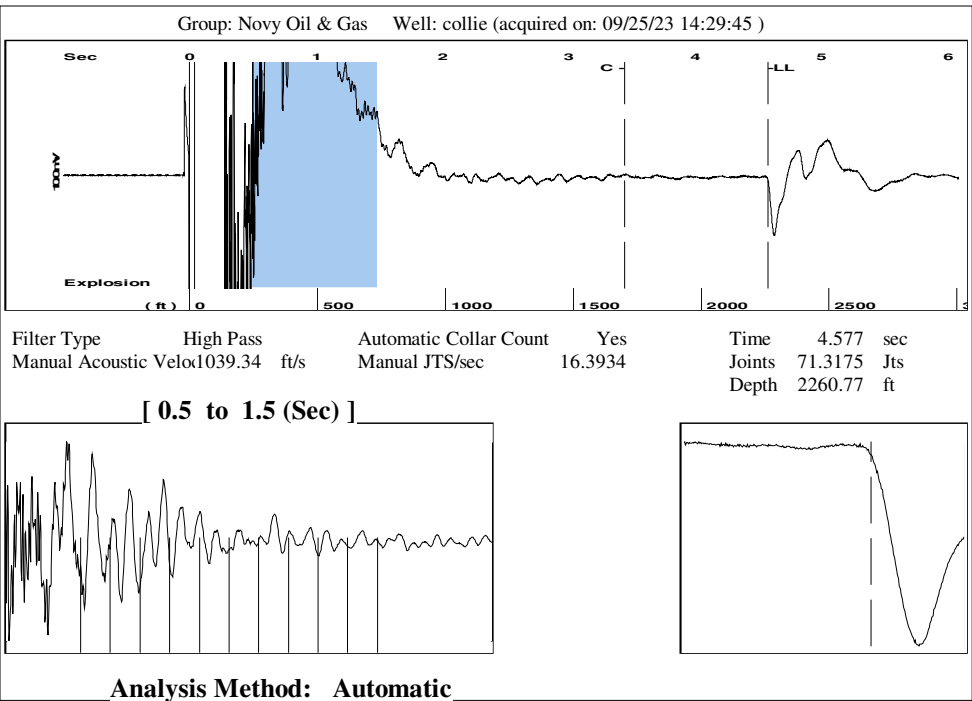
UNDER PENALTY OF PERJURY I HEREBY ATTEST THAT THE INFORMATION CONTAINED HEREIN IS TRUE AND CORRECT TO THE BEST OF MY KNOWLEDGE

Submitted Electronically

Form with fields: Do NOT Write in This Space - KCC USE ONLY, Date Tested, Results, Date Plugged, Date Repaired, Date Put Back in Service, Review Completed by, Comments, TA Approved: Yes Denied, Date.

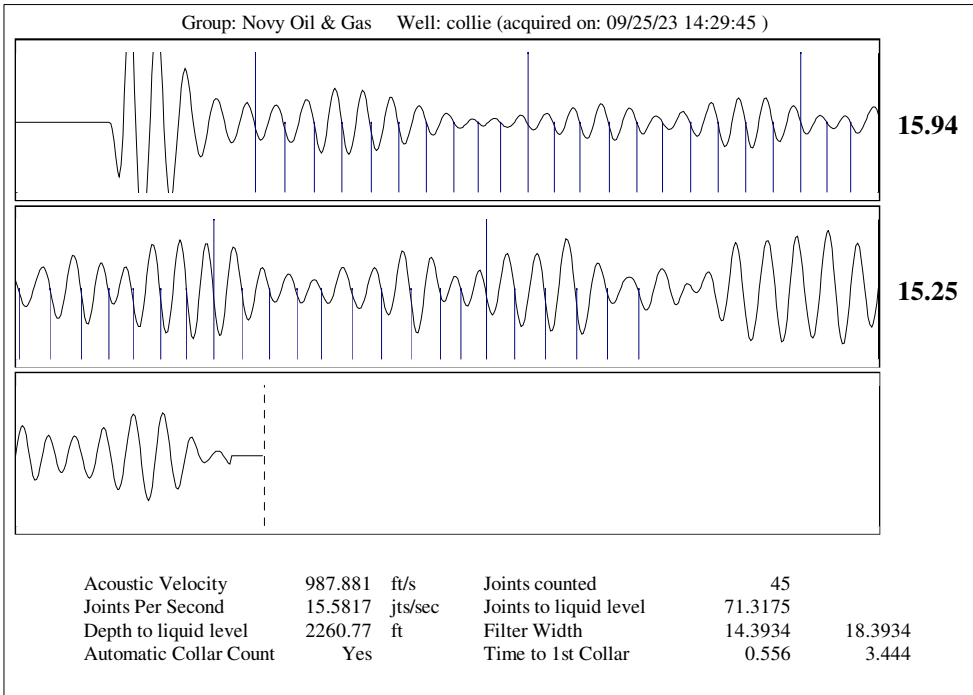
Mail to the Appropriate KCC Conservation Office:

Table with 2 columns: Office Address, Phone. Rows for KCC District Office #1, #2, #3, #4.



Group: Novy Oil & Gas Well: collie (acquired on: 09/25/23 14:29:45)

Production	Potential	Casing Pressure	Producing
Current		-0.3 psi (g)	
Oil - *-	- *- BBL/D	Casing Pressure Buildup	Annular Gas Flow
Water - *-	- *- BBL/D	4539.0 psi	254197 Mscf/D
Gas - *-	- *- Mscf/D	0.75 min	% Liquid
		Gas/Liquid Interface Pressure	19 %
		0.8 psi (g)	
IPR Method	Vogel	Liquid Level Depth	
PBHP/SBHP - *-	- *-	2260.77 ft	
Production Efficiency 0.0		Tubing Intake Depth	
		- *- ft	
Oil 40 deg.API		Formation Depth	
Water 1.05 Sp.Gr.H2O		3674.00 ft	
Gas 0.99 Sp.Gr.AIR			
Acoustic Velocity 987.881 ft/s			
Formation Submergence			
Total Gaseous Liquid Column HT (TVD)	1413 ft		
Equivalent Gas Free Liquid HT (TVD)	264 ft		
Acoustic Test			



Conservation Division
District Office No. 2
3450 N. Rock Road
Building 600, Suite 601
Wichita, KS 67226



Phone: 316-337-7400
<http://kcc.ks.gov/>

Andrew J. French, Chairperson
Dwight D. Keen, Commissioner
Annie Kuether, Commissioner

Laura Kelly, Governor

October 05, 2023

Michael Novy
Novy Oil & Gas, Inc.
PO BOX 559
GODDARD, KS 67052-0559

Re: Temporary Abandonment
API 15-155-21278-00-01
COLLE OWWO 1
SW/4 Sec.19-23S-10W
Reno County, Kansas

Dear Michael Novy:

"Your temporary abandonment (TA) application for the well listed above has been approved. In accordance with K.A.R. 82-3-111 the TA status of this well will expire 10/05/2024.

- * If you return this well to service or plug it, please notify the District Office.
- * If you sell this well you are required to file a Transfer of Operator form, T-1.
- * If the well will remain temporarily abandoned, you must submit a new TA application, CP-111, before 10/05/2024.

You may contact me at the number above if you have questions.

Very truly yours,

Virgil Clothier"