

KANSAS CORPORATION COMMISSION
OIL & GAS CONSERVATION DIVISION

TEMPORARY ABANDONMENT WELL APPLICATION

OPERATOR: License#
Name:
Address 1:
Address 2:
City: State: Zip:
Contact Person:
Phone:
Contact Person Email:
Field Contact Person:
Field Contact Person Phone:

API No. 15-
Spot Description:
Sec. Twp. S. R.
feet from N / S Line of Section
feet from E / W Line of Section
GPS Location: Lat: , Long:
Datum: NAD27 NAD83 WGS84
County: Elevation: GL KB
Lease Name: Well #:
Well Type: Oil Gas OG WSW Other:
SWD Permit #: ENHR Permit #:
Gas Storage Permit #:
Spud Date: Date Shut-In:

Table with 7 columns: Conductor, Surface, Production, Intermediate, Liner, Tubing. Rows include Size, Setting Depth, Amount of Cement, Top of Cement, Bottom of Cement.

Casing Fluid Level from Surface: How Determined? Date:
Casing Squeeze(s): to w / sacks of cement, to w / sacks of cement. Date:
Do you have a valid Oil & Gas Lease? Yes No
Depth and Type: Junk in Hole at Tools in Hole at Casing Leaks: Yes No Depth of casing leak(s):
Type Completion: ALT. I ALT. II Depth of: DV Tool: w / sacks of cement Port Collar: w / sack of cement
Packer Type: Size: Inch Set at: Feet
Total Depth: Plug Back Depth: Plug Back Method:

Geological Data:

Table with 4 columns: Formation Name, Formation Top, Formation Base, Completion Information. Rows 1 and 2.

UNDER PENALTY OF PERJURY I HEREBY ATTEST THAT THE INFORMATION CONTAINED HEREIN IS TRUE AND CORRECT TO THE BEST OF MY KNOWLEDGE

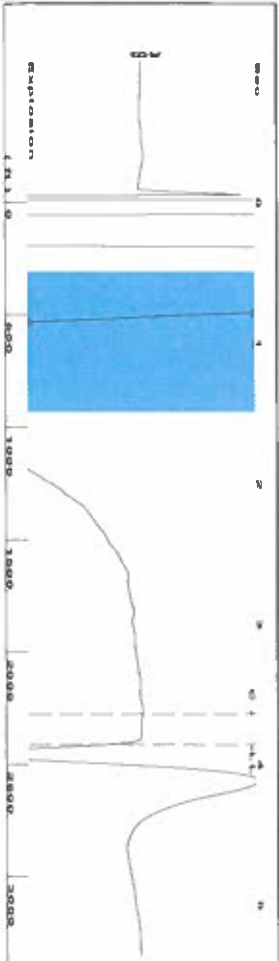
Submitted Electronically

Form with fields: Do NOT Write in This Space - KCC USE ONLY, Date Tested, Results, Date Plugged, Date Repaired, Date Put Back in Service, Review Completed by, Comments, TA Approved: Yes Denied, Date.

Mail to the Appropriate KCC Conservation Office:

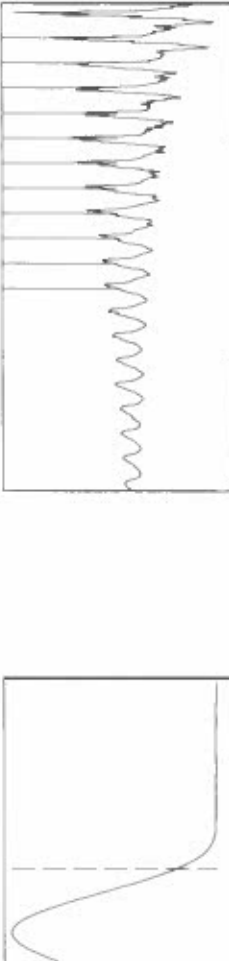
Table with 2 columns: Office Address, Phone. Rows for KCC District Office #1, #2, #3, #4.

Group: Merrit Energy Company-Ulysses Well: Gilbert A-2 (acquired on: 09/27/23 14:43:56)



Filter Type High Pass
Manual Acoustic Velo 1231.07 ft/s
Automatic Collar Count Yes
Manual JTS/sec 19.4175
Time 3.857 sec
Joints 76.0341 Jts
Depth 2410.28 ft

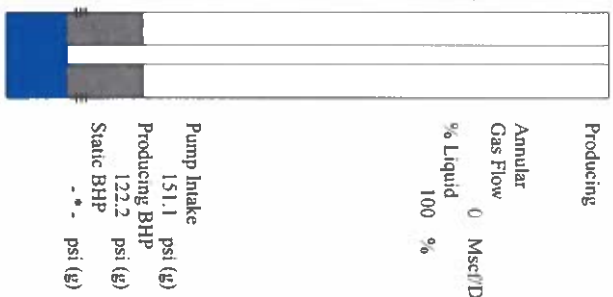
[0.5 to 1.5 (Sec)]



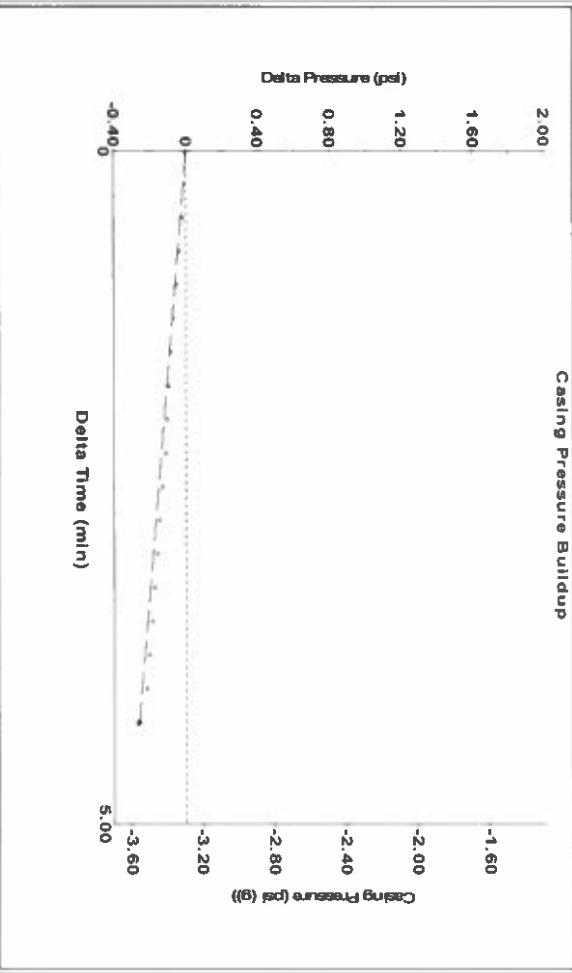
Analysis Method: Automatic

Group: Merrit Energy Company-Ulysses Well: Gilbert A-2 (acquired on: 09/27/23 14:43:56)

Production	Potential	Casing Pressure	Producing
Current	Oil - * -	-3.3 psi (g)	Annular Gas Flow 0 Mscf/D
Oil	- * -	Casing Pressure Buildup -0.3 psi	% Liquid 100 %
Water	- * -	4.25 min	
Gas	- * -	Gas/Liquid Interface Pressure -2.6 psi (g)	
IPR Method	Vogel	Liquid Level Depth 2410.28 ft	
PBHPS/BHP	Production Efficiency 0.0	Pump Intake Depth 2864.00 ft	
		Formation Depth 2778.00 ft	
		Acoustic Velocity 1249.82 ft/s	

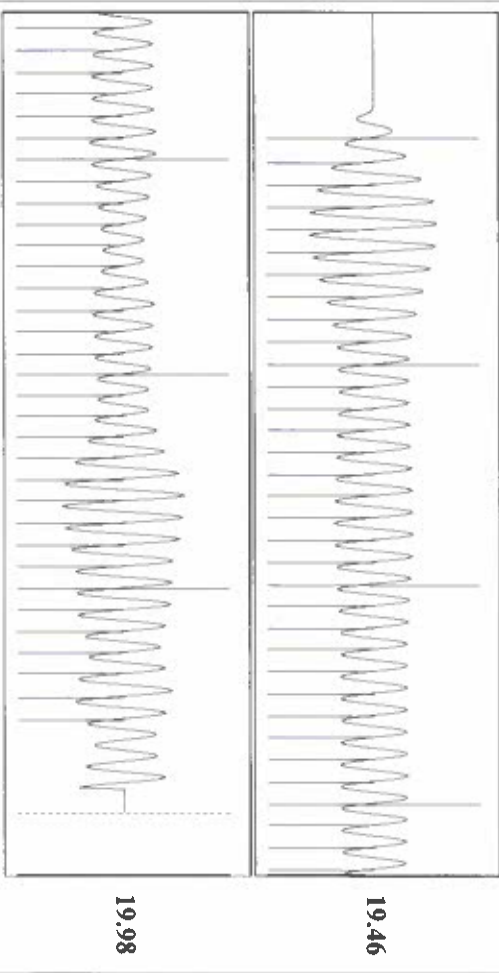


Group: Merrit Energy Company-Ulysses Well: Gilbert A-2 (acquired on: 09/27/23 14:43:56)



Change in Pressure -0.26 psi
Change in Time 4.25 min
PT18865 Range
0 - 2 psi

Group: Merrit Energy Company-Ulysses Well: Gilbert A-2 (acquired on: 09/27/23 14:43:56)



Acoustic Velocity 1249.82 ft/s
Joints Per Second 19.7133 Jts/Sec
Depth to liquid level 2410.28 ft
Automatic Collar Count Yes
Joints counted 66
Joints to liquid level 76.0341
Filter Width 17.4175
Time to 1st Collar 0.292
21.4175
3.64

October 06, 2023

Katherine McClurkan
Merit Energy Company, LLC
13727 Noel Raod, Suite1200
Dallas, TX 75240

Re: Temporary Abandonment
API 15-067-21160-00-01
Gilbert A 2
SW/4 Sec.32-30S-35W
Grant County, Kansas

Dear Katherine McClurkan:

"Your temporary abandonment (TA) application for the well listed above has been approved. In accordance with K.A.R. 82-3-111 the TA status of this well will expire 10/06/2024.

- * If you return this well to service or plug it, please notify the District Office.
- * If you sell this well you are required to file a Transfer of Operator form, T-1.
- * If the well will remain temporarily abandoned, you must submit a new TA application, CP-111, before 10/06/2024.

You may contact me at the number above if you have questions.

Very truly yours,

Michael Maier"