

KANSAS CORPORATION COMMISSION
OIL & GAS CONSERVATION DIVISION

TEMPORARY ABANDONMENT WELL APPLICATION

OPERATOR: License#
Name:
Address 1:
Address 2:
City: State: Zip:
Contact Person:
Phone:
Contact Person Email:
Field Contact Person:
Field Contact Person Phone:

API No. 15-
Spot Description:
Sec. Twp. S. R.
GPS Location: Lat: Long:
Datum: NAD27 NAD83 WGS84
County: Elevation:
Lease Name: Well #:
Well Type: Oil Gas OG WSW Other:
SWD Permit #: ENHR Permit #:
Gas Storage Permit #:
Spud Date: Date Shut-In:

Table with 7 columns: Conductor, Surface, Production, Intermediate, Liner, Tubing. Rows include Size, Setting Depth, Amount of Cement, Top of Cement, Bottom of Cement.

Casing Fluid Level from Surface: How Determined? Date:
Casing Squeeze(s): to w / sacks of cement, to w / sacks of cement. Date:
Do you have a valid Oil & Gas Lease? Yes No
Depth and Type: Junk in Hole at Tools in Hole at Casing Leaks: Yes No Depth of casing leak(s):
Type Completion: ALT. I ALT. II Depth of: DV Tool: w / sacks of cement Port Collar: w / sack of cement
Packer Type: Size: Inch Set at: Feet
Total Depth: Plug Back Depth: Plug Back Method:

Geological Data:

Table with 4 columns: Formation Name, Formation Top, Formation Base, Completion Information. Rows 1 and 2.

UNDER PENALTY OF PERJURY I HEREBY ATTEST THAT THE INFORMATION CONTAINED HEREIN IS TRUE AND CORRECT TO THE BEST OF MY KNOWLEDGE

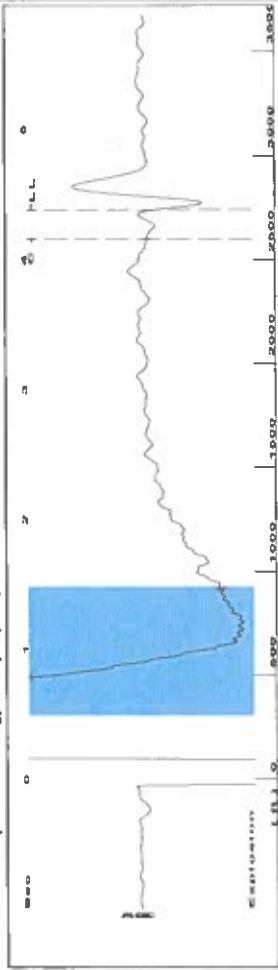
Submitted Electronically

Do NOT Write in This Space - KCC USE ONLY
Date Tested: Results: Date Plugged: Date Repaired: Date Put Back in Service:
Review Completed by: Comments:
TA Approved: Yes Denied Date:

Mail to the Appropriate KCC Conservation Office:

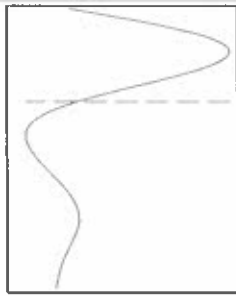
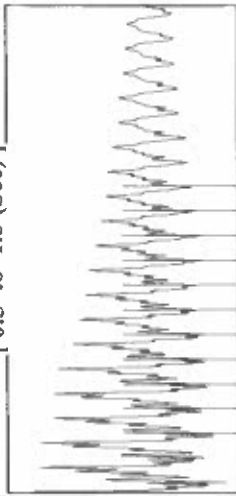
Table with 2 columns: Office Address, Phone. Rows for District Office #1, #2, #3, #4.

Group: Merit Energy Company-Ulysses Well: T-ate B-4 (acquired on: 09/28/23 15:59:42)

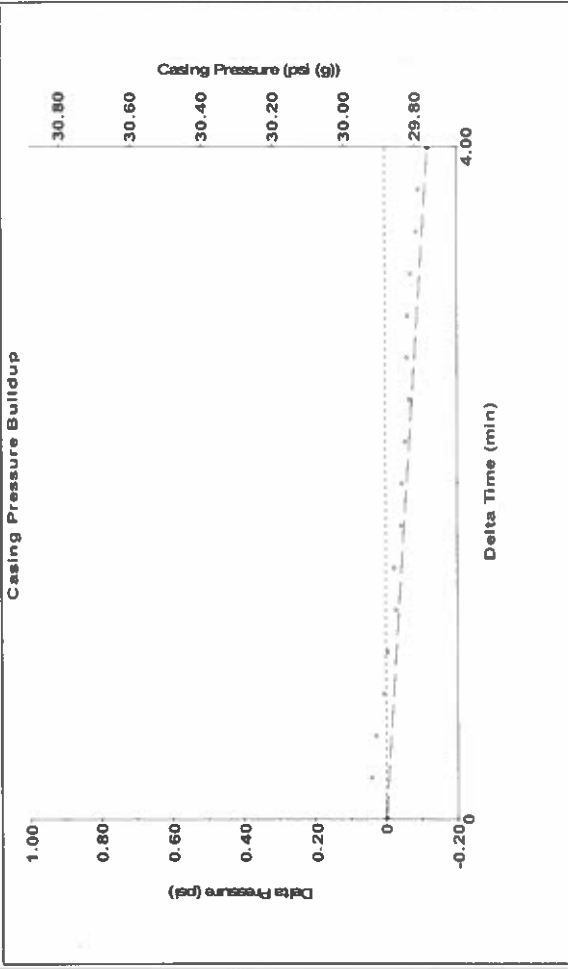


Filter Type High Pass Automatic Collar Count Yes Time 4.392 sec
 Manual Acoustic Velo 1245.58 ft/s Manual JTS/sec 19.6464 Joints 86.3596 Jts
 Depth 2737.60 ft

10.5 to 1.5 (Sec)



Group: Merit Energy Company-Ulysses Well: T-ate B-4 (acquired on: 09/28/23 15:59:42)



Change in Pressure -0.12 psi PT18865 Range
 Change in Time 4.00 min

Analysis Method: Automatic

Group: Merit Energy Company-Ulysses Well: T-ate B-4 (acquired on: 09/28/23 15:59:42)

| | | | |
|---|-------------------------------|-----------------|-------------------|
| Production Current | Potential | Casing Pressure | Producing |
| Oil -*- BBL/D | 29.9 psi (g) | 29.9 psi (g) | Annular |
| Water -*- BBL/D | Casing Pressure Buildup | -0.118 psi | Gas Flow 0 Mscf/D |
| Gas -*- Mscf/D | 4.00 min | 4.00 min | % Liquid 100 % |
| IPR Method Vogel | Gas/Liquid Interface Pressure | 33.1 psi (g) | |
| PBHP/SBHP -*- | Liquid Level Depth | 2737.60 ft | |
| Production Efficiency 0.0 | Pump Intake Depth | 2914.00 ft | |
| Oil 40 deg.API | Formation Depth | 2890.00 ft | |
| Water 1.05 Sp.Gr.H2O | | | |
| Gas 0.75 Sp.Gr.AIR | | | |
| Acoustic Velocity 1246.63 ft/s | | | |
| Formation Submergence | | | |
| Total Gaseous Liquid Column HT (TVD) 176 ft | | | |
| Equivalent Gas Free Liquid HT (TVD) 176 ft | | | |
| 9/28/23 | | | |

Group: Merit Energy Company-Ulysses Well: T-ate B-4 (acquired on: 09/28/23 15:59:42)

| | |
|-----------------------------------|--------------------------------|
| Acoustic Velocity 1246.63 ft/s | Joints counted 77 |
| Joints Per Second 19.6629 jts/sec | Joints to liquid level 86.3596 |
| Depth to liquid level 2737.6 ft | Filter Width 21.6464 |
| Automatic Collar Count Yes | Time to 1st Collar 4.168 |

Conservation Division
District Office No. 1
210 E. Frontview, Suite A
Dodge City, KS 67801



Phone: 620-682-7933
<http://kcc.ks.gov/>

Andrew J. French, Chairperson
Dwight D. Keen, Commissioner
Annie Kuether, Commissioner

Laura Kelly, Governor

October 06, 2023

Katherine McClurkan
Merit Energy Company, LLC
13727 NOEL ROAD, SUITE 1200
DALLAS, TX 75240-7362

Re: Temporary Abandonment
API 15-093-21754-00-00
Tte B 4
NE/4 Sec.34-26S-36W
Kearny County, Kansas

Dear Katherine McClurkan:

"Your temporary abandonment (TA) application for the well listed above has been approved. In accordance with K.A.R. 82-3-111 the TA status of this well will expire 10/06/2024.

- * If you return this well to service or plug it, please notify the District Office.
- * If you sell this well you are required to file a Transfer of Operator form, T-1.
- * If the well will remain temporarily abandoned, you must submit a new TA application, CP-111, before 10/06/2024.

You may contact me at the number above if you have questions.

Very truly yours,

Michael Maier"