

KANSAS CORPORATION COMMISSION
OIL & GAS CONSERVATION DIVISION

TEMPORARY ABANDONMENT WELL APPLICATION

OPERATOR: License#
Name:
Address 1:
Address 2:
City: State: Zip:
Contact Person:
Phone:
Contact Person Email:
Field Contact Person:
Field Contact Person Phone:

API No. 15-
Spot Description:
Sec. Twp. S. R.
GPS Location: Lat: Long:
Datum: NAD27 NAD83 WGS84
County: Elevation:
Lease Name: Well #:
Well Type: Oil Gas OG WSW Other:
SWD Permit #: ENHR Permit #:
Gas Storage Permit #:
Spud Date: Date Shut-In:

Table with 7 columns: Conductor, Surface, Production, Intermediate, Liner, Tubing. Rows include Size, Setting Depth, Amount of Cement, Top of Cement, Bottom of Cement.

Casing Fluid Level from Surface: How Determined? Date:
Casing Squeeze(s): to w / sacks of cement, to w / sacks of cement. Date:
Do you have a valid Oil & Gas Lease? Yes No
Depth and Type: Junk in Hole at Tools in Hole at Casing Leaks: Yes No Depth of casing leak(s):
Type Completion: ALT. I ALT. II Depth of: DV Tool: w / sacks of cement Port Collar: w / sack of cement
Packer Type: Size: Inch Set at: Feet
Total Depth: Plug Back Depth: Plug Back Method:

Geological Date:

Table with 4 columns: Formation Name, Formation Top, Formation Base, Completion Information. Rows 1 and 2.

UNDER PENALTY OF PERJURY I HEREBY ATTEST THAT THE INFORMATION CONTAINED HEREIN IS TRUE AND CORRECT TO THE BEST OF MY KNOWLEDGE

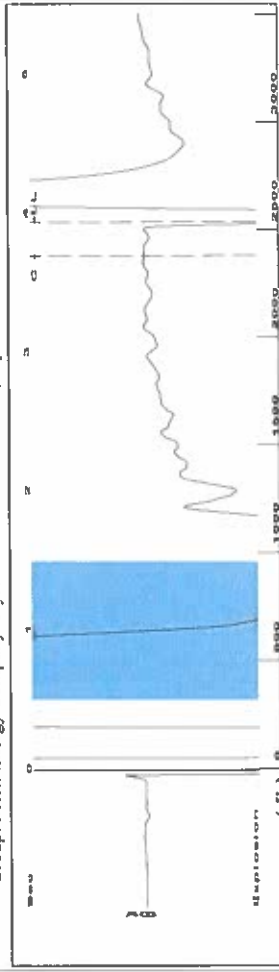
Submitted Electronically

Do NOT Write in This Space - KCC USE ONLY
Date Tested: Results: Date Plugged: Date Repaired: Date Put Back in Service:
Review Completed by: Comments:
TA Approved: Yes Denied Date:

Mail to the Appropriate KCC Conservation Office:

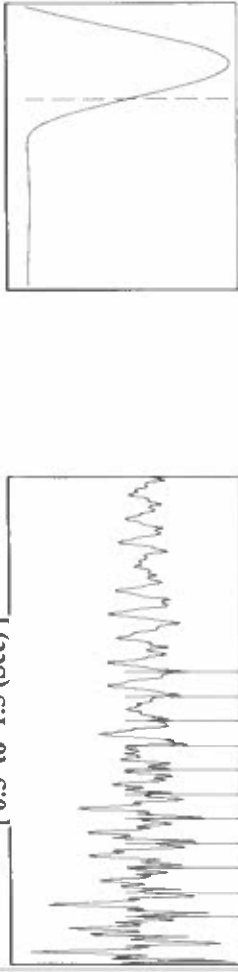
Table with 2 columns: Office Address, Phone. Rows for KCC District Office #1, #2, #3, #4.

Group: Merit Energy Company-Ulysses Well: Stever C-3 (acquired on: 10/07/23 16:28:48)



Filter Type High Pass Automatic Collar Count Yes
 Manual Acoustic Velo 1260.44 ft/s Manual JTS/sec 19.8807
 Time 3.935 sec
 Joints 79.9797 Jts
 Depth 2535.36 ft

0.5 to 1.5 (Sec)

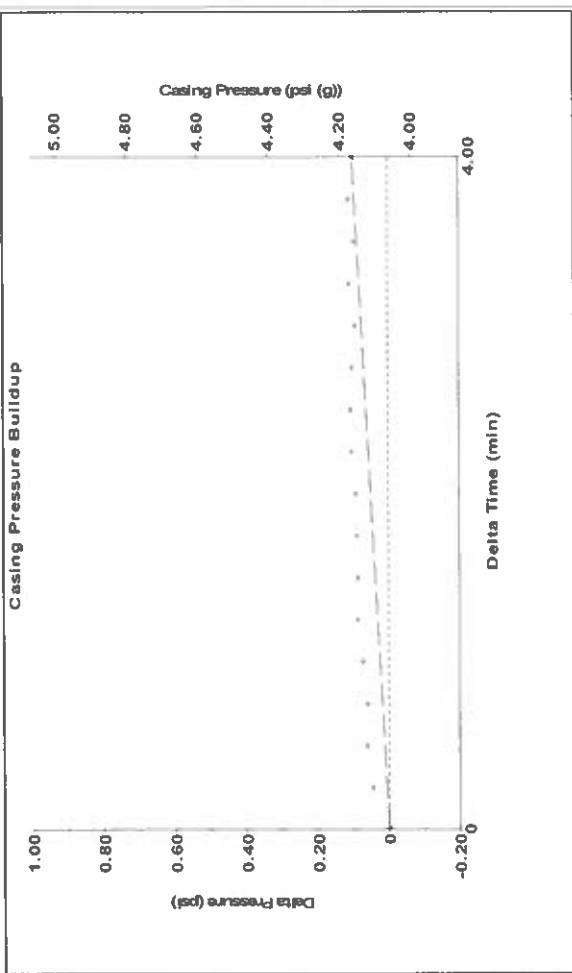


Analysis Method: Automatic

Group: Merit Energy Company-Ulysses Well: Stever C-3 (acquired on: 10/07/23 16:28:48)

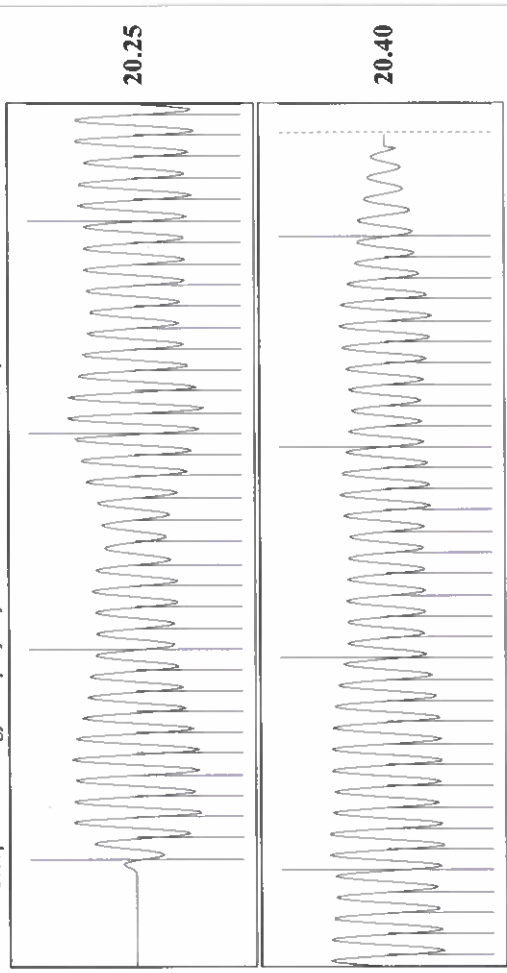
Production	Potential	Casing Pressure	Producing
Oil -*- BBL/D	4.1 psi (g)		Annular
Water -*- BBL/D	Casing Pressure Buildup		Gas Flow
Gas -*- Mscf/D	0.1 psi		% Liquid
	4.00 min		100 %
IPR Method Vogel	Gas/Liquid Interface Pressure		
PBHP/SBHP -*-	5.2 psi (g)		
Production Efficiency 0.0			
Oil 40 deg/API	Liquid Level Depth		
Water 1.05 Sp.Gr:H2O	2535.36 ft		
Gas 0.72 Sp.Gr:AIR	Pump Intake Depth		
	2963.00 ft		
Acoustic Velocity 1288.62 ft/s	Formation Depth		
	2948.00 ft		
Formation Submergence			
Total Gaseous Liquid Column HT (TVD)	428 ft		
Equivalent Gas Free Liquid HT (TVD)	426 ft		
10/7/23			

Group: Merit Energy Company-Ulysses Well: Stever C-3 (acquired on: 10/07/23 16:28:48)



Change in Pressure 0.10 psi PT18865 Range
 Change in Time 4.00 min

Group: Merit Energy Company-Ulysses Well: Stever C-3 (acquired on: 10/07/23 16:28:48)



Acoustic Velocity 1288.62 ft/s Joints counted 70
 Joints Per Second 20.3252 Jts/sec Joints to liquid level 79.9797
 Depth to liquid level 2535.36 ft Filter Width 21.8807
 Automatic Collar Count Yes Time to 1st Collar 0.248 3.692

October 13, 2023

Katherine McClurkan
Merit Energy Company, LLC
13727 Noel Road, Suite 1200
Dallas, TX 75240-7362

Re: Temporary Abandonment
API 15-067-21159-00-01
Stever C 3
NE/4 Sec.01-28S-36W
Grant County, Kansas

Dear Katherine McClurkan:

"Your temporary abandonment (TA) application for the well listed above has been approved. In accordance with K.A.R. 82-3-111 the TA status of this well will expire 10/13/2024.

- * If you return this well to service or plug it, please notify the District Office.
- * If you sell this well you are required to file a Transfer of Operator form, T-1.
- * If the well will remain temporarily abandoned, you must submit a new TA application, CP-111, before 10/13/2024.

You may contact me at the number above if you have questions.

Very truly yours,

Michael Maier"