

KANSAS CORPORATION COMMISSION
OIL & GAS CONSERVATION DIVISION

TEMPORARY ABANDONMENT WELL APPLICATION

OPERATOR: License#
Name:
Address 1:
Address 2:
City: State: Zip:
Contact Person:
Phone:
Contact Person Email:
Field Contact Person:
Field Contact Person Phone:

API No. 15-
Spot Description:
Sec. Twp. S. R.
GPS Location: Lat, Long
Datum: NAD27, NAD83, WGS84
County: Elevation:
Lease Name: Well #:
Well Type: Oil, Gas, OG, WSW, Other
SWD Permit #: ENHR Permit #:
Gas Storage Permit #:
Spud Date: Date Shut-In:

Table with 7 columns: Conductor, Surface, Production, Intermediate, Liner, Tubing. Rows include Size, Setting Depth, Amount of Cement, Top of Cement, Bottom of Cement.

Casing Fluid Level from Surface: How Determined? Date:
Casing Squeeze(s): to w / sacks of cement, to w / sacks of cement. Date:
Do you have a valid Oil & Gas Lease? Yes No
Depth and Type: Junk in Hole at Tools in Hole at Casing Leaks: Yes No Depth of casing leak(s):
Type Completion: ALT. I ALT. II Depth of: DV Tool: w / sacks of cement Port Collar: w / sack of cement
Packer Type: Size: Inch Set at: Feet
Total Depth: Plug Back Depth: Plug Back Method:

Geological Date:

Table with 4 columns: Formation Name, Formation Top, Formation Base, Completion Information. Rows 1 and 2.

UNDER PENALTY OF PERJURY I HEREBY ATTEST THAT THE INFORMATION CONTAINED HEREIN IS TRUE AND CORRECT TO THE BEST OF MY KNOWLEDGE

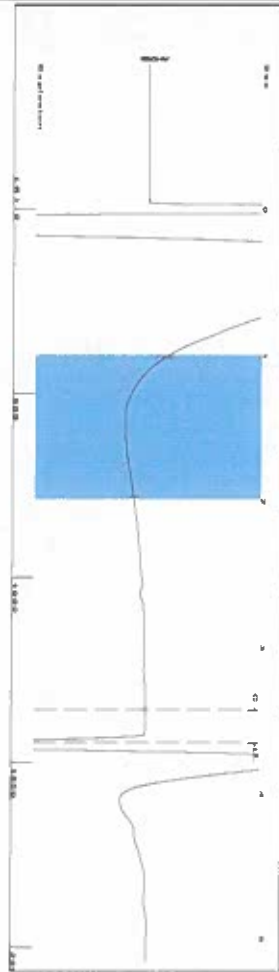
Submitted Electronically

Do NOT Write in This Space - KCC USE ONLY
Date Tested: Results: Date Plugged: Date Repaired: Date Put Back in Service:
Review Completed by: Comments:
TA Approved: Yes Denied Date:

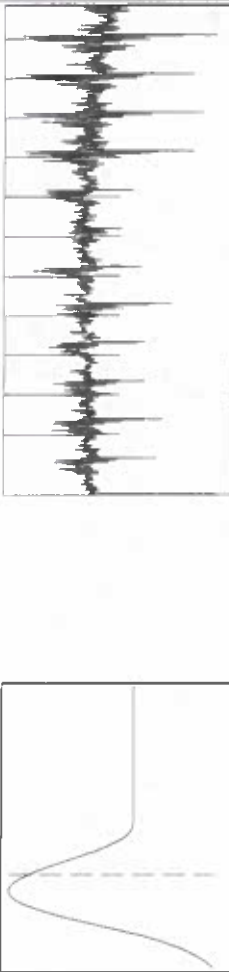
Mail to the Appropriate KCC Conservation Office:

Table with 3 columns: District Office #, Address, Phone. Rows 1-4.

Group: SUBLETTE Well: GCCU 402 (acquired on: 10/03/23 14:47:30)



Filter Type High Pass Automatic Collar Count Yes
 Manual Acoustic Velo 771.393 R/s Manual JTS/sec 12.3305
 Time 3.655 sec
 Joints 46.1927 Jts
 Depth 1444.91 ft



Analysis Method: Automatic

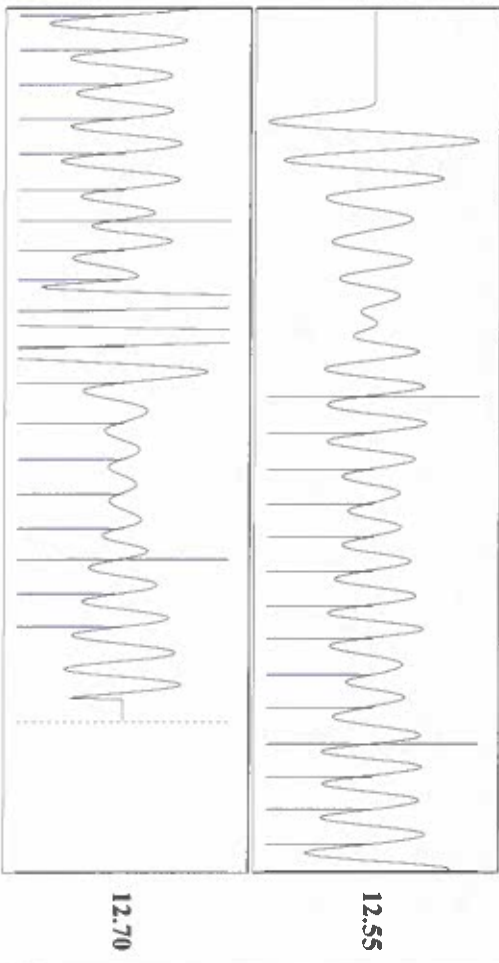
Group: SUBLETTE Well: GCCU 402 (acquired on: 10/03/23 14:47:30)

Production Current	Potential	Casing Pressure	Producing
Oil 15	-* BBL/D	9.3 psi (g)	Annular
Water 1050	-* BBL/D	Casing Pressure Buildup	Gas Flow
Gas -*-	Mscf/D	-0.0 psi	-* Mscf/D
IPR Method	Vogel	1.00 min	% Liquid
PBHP/SBHP	-*-	Gas/Liquid Interface Pressure	100 %
Production Efficiency	0.0	10.8 psi (g)	
Oil 38 deg-API		Liquid Level Depth	Tubing Inake
Water 1.05 Sp.Gr.H2O		1444.91 ft	-* psi (g)
Gas 1.16 Sp.Gr.AIR		Tubing Inake Depth	Producing BHP
Acoustic Velocity		0.00 ft	1774.5 psi (g)
		Formation Depth	Static BHP
		5340.00 ft	-* psi (g)
Formation Submergence			
Total Gaseous Liquid Column HIT (TVD)			
Equivalent Gas Free Liquid HIT (TVD)			
10/3/23			

Group: SUBLETTE Well: GCCU 402 (acquired on: 10/03/23 14:47:30)



Group: SUBLETTE Well: GCCU 402 (acquired on: 10/03/23 14:47:30)



Acoustic Velocity	790.648 R/s	Joints counted	32
Joints Per Second	12.6382 Jts/sec	Joints to liquid level	46.1927
Depth to liquid level	1444.91 ft	Filler Width	10.3305
Automatic Collar Count	Yes	Time to 1st Collar	0.9

October 13, 2023

Katherine McClurkan
Merit Energy Company, LLC
13727 NOEL ROAD, SUITE 1200
DALLAS, TX 75240-7362

Re: Temporary Abandonment
API 15-081-22056-00-01
GCCU 402
NE/4 Sec.11-28S-33W
Haskell County, Kansas

Dear Katherine McClurkan:

"Your temporary abandonment (TA) application for the well listed above has been approved. In accordance with K.A.R. 82-3-111 the TA status of this well will expire 10/13/2024.

- * If you return this well to service or plug it, please notify the District Office.
- * If you sell this well you are required to file a Transfer of Operator form, T-1.
- * If the well will remain temporarily abandoned, you must submit a new TA application, CP-111, before 10/13/2024.

You may contact me at the number above if you have questions.

Very truly yours,

Michael Maier"