

KANSAS CORPORATION COMMISSION
OIL & GAS CONSERVATION DIVISION

TEMPORARY ABANDONMENT WELL APPLICATION

OPERATOR: License#
Name:
Address 1:
Address 2:
City: State: Zip:
Contact Person:
Phone:
Contact Person Email:
Field Contact Person:
Field Contact Person Phone:

API No. 15-
Spot Description:
Sec. Twp. S. R.
feet from N / S Line of Section
feet from E / W Line of Section
GPS Location: Lat: , Long:
Datum: NAD27 NAD83 WGS84
County: Elevation: GL KB
Lease Name: Well #:
Well Type: Oil Gas OG WSW Other:
SWD Permit #: ENHR Permit #:
Gas Storage Permit #:
Spud Date: Date Shut-In:

Table with 7 columns: Conductor, Surface, Production, Intermediate, Liner, Tubing. Rows include Size, Setting Depth, Amount of Cement, Top of Cement, Bottom of Cement.

Casing Fluid Level from Surface: How Determined? Date:
Casing Squeeze(s): to w / sacks of cement, to w / sacks of cement. Date:
Do you have a valid Oil & Gas Lease? Yes No
Depth and Type: Junk in Hole at Tools in Hole at Casing Leaks: Yes No Depth of casing leak(s):
Type Completion: ALT. I ALT. II Depth of: DV Tool: w / sacks of cement Port Collar: w / sack of cement
Packer Type: Size: Inch Set at: Feet
Total Depth: Plug Back Depth: Plug Back Method:

Geological Data:

Table with 4 columns: Formation Name, Formation Top, Formation Base, Completion Information. Rows 1 and 2.

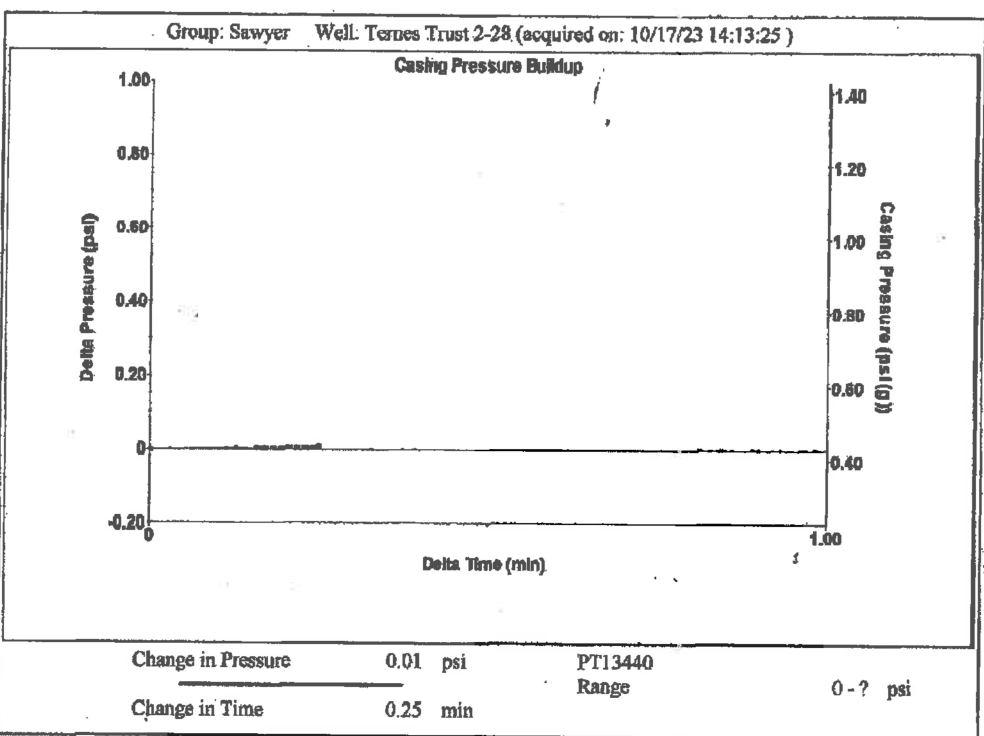
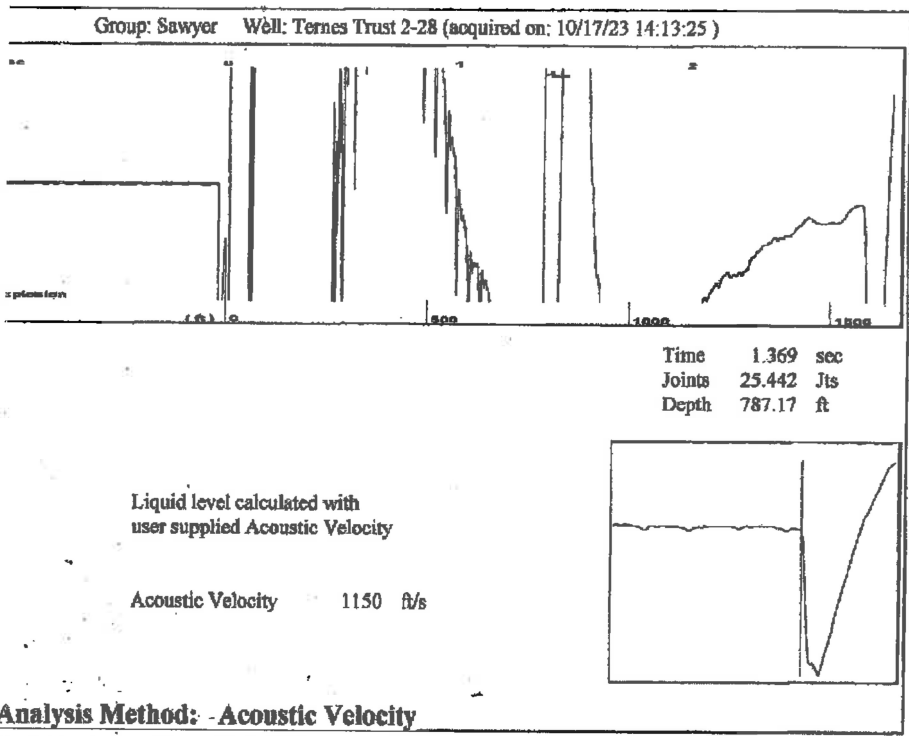
UNDER PENALTY OF PERJURY I HEREBY ATTEST THAT THE INFORMATION CONTAINED HEREIN IS TRUE AND CORRECT TO THE BEST OF MY KNOWLEDGE

Submitted Electronically

Do NOT Write in This Space - KCC USE ONLY
Date Tested: Results: Date Plugged: Date Repaired: Date Put Back in Service:
Review Completed by: Comments:
TA Approved: Yes Denied Date:

Mail to the Appropriate KCC Conservation Office:

Table with 3 columns: District Office, Address, Phone. Rows 1-4.



Group: Sawyer Well: Ternes Trust 2-28 (acquired on: 10/17/23 14:13:25)

Current Potential	Casing Pressure	Producing
-*- BBL/D	0.4 psi (g)	
-*- BBL/D	Casing Pressure Buildup	Annular Gas Flow
-*- Mscf/D	0.0 psi	0 Mscf/D
	0.25 min	% Liquid
Method /SBHP	Gas/Liquid Interface Pressure	100 %
Efficiency	0.8 psi (g)	
40 deg API	Liquid Level Depth	
1.05 Sp.Gr.H2O	787.17 ft	
0.85 Sp.Gr.AIR	Pump Intake Depth	
	3939.00 ft	
Acoustic Velocity	Formation Depth	
1150 ft/s	3939.00 ft	
Submergence	Pump Intake	
Gaseous Liquid Column HT (TVD)	1036.2 psi (g)	
3152 ft	Producing BHP	
Submergence	1045.3 psi (g)	
3152 ft	Static BHP	
	-*- psi (g)	

Group: Sawyer Well: Ternes Trust 2-28 (acquired on: 10/17/23 14:13:25)

Entered Acoustic Velocity for Liquid Level depth determination

Conservation Division
District Office No. 1
210 E. Frontview, Suite A
Dodge City, KS 67801



Phone: 620-682-7933
<http://kcc.ks.gov/>

Andrew J. French, Chairperson
Dwight D. Keen, Commissioner
Annie Kuether, Commissioner

Laura Kelly, Governor

10/18/2023

Loveness Manje
F. G. Holl Company L.L.C.
9431 E CENTRAL STE 100
WICHITA, KS 67206-2563

Re: Temporary Abandonment
API 15-007-23073-00-00
TERNES TRUST 2-28
NE/4 Sec.28-30S-14W
Barber County, Kansas

Dear Loveness Manje:

"Your temporary abandonment (TA) application for the well listed above has been approved. In accordance with K.A.R. 82-3-111 the TA status of this well will expire 10/18/2024.

- * If you return this well to service or plug it, please notify the District Office.
- * If you sell this well you are required to file a Transfer of Operator form, T-1.
- * If the well will remain temporarily abandoned, you must submit a new TA application, CP-111, before 10/18/2024.

You may contact me at the number above if you have questions.

Very truly yours,

Michael Maier"