

KANSAS CORPORATION COMMISSION
OIL & GAS CONSERVATION DIVISION

TEMPORARY ABANDONMENT WELL APPLICATION

OPERATOR: License#
Name:
Address 1:
Address 2:
City: State: Zip:
Contact Person:
Phone:
Contact Person Email:
Field Contact Person:
Field Contact Person Phone:

API No. 15-
Spot Description:
Sec. Twp. S. R.
GPS Location: Lat: Long:
Datum: NAD27 NAD83 WGS84
County: Elevation:
Lease Name: Well #:
Well Type: Oil Gas OG WSW Other:
SWD Permit #: ENHR Permit #:
Gas Storage Permit #:
Spud Date: Date Shut-In:

Table with 7 columns: Conductor, Surface, Production, Intermediate, Liner, Tubing. Rows include Size, Setting Depth, Amount of Cement, Top of Cement, Bottom of Cement.

Casing Fluid Level from Surface: How Determined? Date:
Casing Squeeze(s): to w / sacks of cement, to w / sacks of cement. Date:
Do you have a valid Oil & Gas Lease? Yes No
Depth and Type: Junk in Hole at Tools in Hole at Casing Leaks: Yes No Depth of casing leak(s):
Type Completion: ALT. I ALT. II Depth of: DV Tool: w / sacks of cement Port Collar: w / sack of cement
Packer Type: Size: Inch Set at: Feet
Total Depth: Plug Back Depth: Plug Back Method:

Geological Data:

Table with 4 columns: Formation Name, Formation Top, Formation Base, Completion Information. Rows 1 and 2.

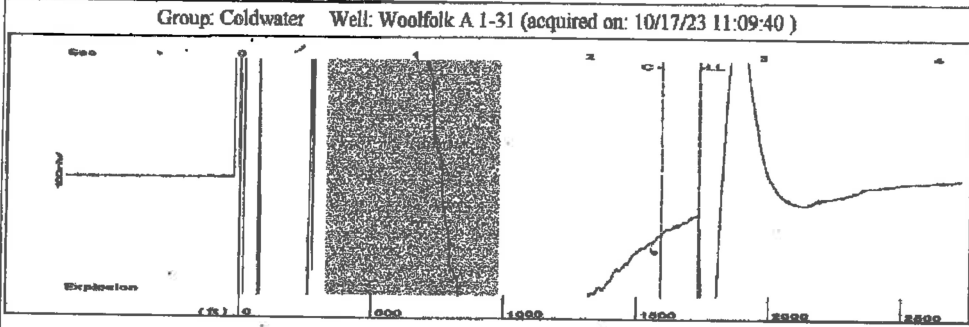
UNDER PENALTY OF PERJURY I HEREBY ATTEST THAT THE INFORMATION CONTAINED HEREIN IS TRUE AND CORRECT TO THE BEST OF MY KNOWLEDGE

Submitted Electronically

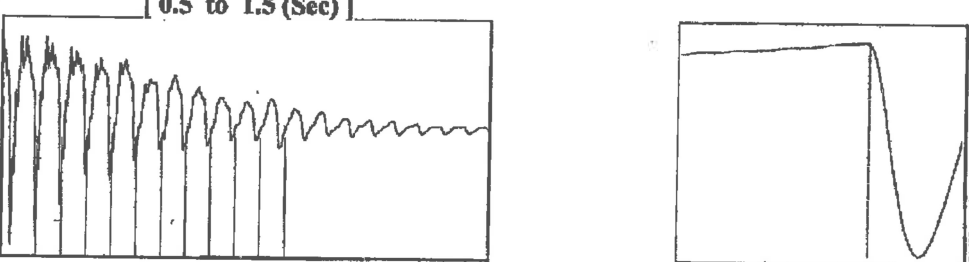
Do NOT Write in This Space - KCC USE ONLY
Date Tested: Results: Date Plugged: Date Repaired: Date Put Back in Service:
Review Completed by: Comments:
TA Approved: Yes Denied Date:

Mail to the Appropriate KCC Conservation Office:

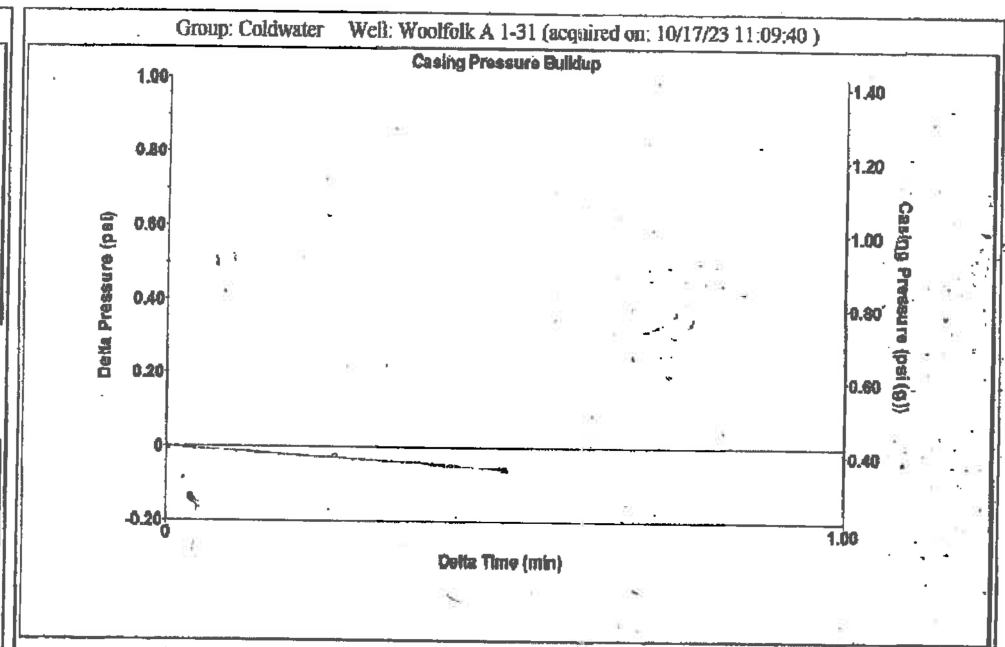
Table with 2 columns: Office Address, Phone. Rows for District Office #1, #2, #3, #4.



Filter Type High Pass Automatic Collar Count Yes Time 2.636 sec  
 Manual Aconstic Velo 1278.74 ft/s Manual JTS/sec 19.685 Joints 53.3653 Jts  
 Depth 1733.31 ft



Analysis Method: Automatic



Change in Pressure -0.06 psi PT13440  
 Range 0 - ? psi  
 Change in Time 0.50 min

Group: Coldwater Well: Woolfolk A 1-31 (acquired on: 10/17/23 11:09:40)

Production Current	Potential	Casing Pressure	Producing
Oil - * -	- * - BBL/D	0.4 psi (g)	Annular Gas Flow 0 Mscf/D
Water - * -	- * - BBL/D	Casing Pressure Buildup -0.1 psi	% Liquid 100 %
Gas - * -	- * - Mscf/D	0.50 min	
IPR Method Vogel		Gas/Liquid Interface Pressure 1.0 psi (g)	
PBHP/SBHP - * -		Liquid Level Depth 1733.31 ft	
Production Efficiency 0.0		Pump Intake Depth 5220.00 ft	
Oil 40 deg.API		Formation Depth 5293.00 ft	
Water 1.05 Sp.Gr.H2O			
Gas 0.67 Sp.Gr.AIR			
Acoustic Velocity 1315.1 ft/s			
Formation Submergence		Pump Intake 1143.4 psi (g)	
Total Gaseous Liquid Column HT (TVD) 3487 ft		Producing BHP 1176.6 psi (g)	
Equivalent Gas Free Liquid HT (TVD) 3487 ft		Static BHP - * - psi (g)	
Acoustic Test			

Group: Coldwater Well: Woolfolk A 1-31 (acquired on: 10/17/23 11:09:40)

Acoustic Velocity 1315.1 ft/s	Joints counted 43
Joints Per Second 20.2448 jts/sec	Joints to liquid level 53.3653
Depth to liquid level 1733.31 ft	Filter Width 17.685
Automatic Collar Count Yes	Time to 1st Collar 0.3 2.424

Conservation Division  
District Office No. 1  
210 E. Frontview, Suite A  
Dodge City, KS 67801



Phone: 620-682-7933  
<http://kcc.ks.gov/>

Andrew J. French, Chairperson  
Dwight D. Keen, Commissioner  
Annie Kuether, Commissioner

Laura Kelly, Governor

10/18/2023

Loveness Mpanje  
F. G. Holl Company L.L.C.  
9431 E CENTRAL STE 100  
WICHITA, KS 67206-2563

Re: Temporary Abandonment  
API 15-033-21587-00-00  
WOOLFOLK 'A' 1-31  
SE/4 Sec.31-34S-19W  
Comanche County, Kansas

Dear Loveness Mpanje:

"Your temporary abandonment (TA) application for the well listed above has been approved. In accordance with K.A.R. 82-3-111 the TA status of this well will expire 10/18/2024.

- \* If you return this well to service or plug it, please notify the District Office.
- \* If you sell this well you are required to file a Transfer of Operator form, T-1.
- \* If the well will remain temporarily abandoned, you must submit a new TA application, CP-111, before 10/18/2024.

You may contact me at the number above if you have questions.

Very truly yours,

Michael Maier"