

KANSAS CORPORATION COMMISSION
OIL & GAS CONSERVATION DIVISION

TEMPORARY ABANDONMENT WELL APPLICATION

OPERATOR: License#
Name:
Address 1:
Address 2:
City: State: Zip:
Contact Person:
Phone:
Contact Person Email:
Field Contact Person:
Field Contact Person Phone:

API No. 15-
Spot Description:
Sec. Twp. S. R.
GPS Location: Lat, Long
Datum: NAD27, NAD83, WGS84
County: Elevation:
Lease Name: Well #:
Well Type: Oil, Gas, OG, WSW, Other
SWD Permit #: ENHR Permit #:
Gas Storage Permit #:
Spud Date: Date Shut-In:

Table with 7 columns: Conductor, Surface, Production, Intermediate, Liner, Tubing. Rows include Size, Setting Depth, Amount of Cement, Top of Cement, Bottom of Cement.

Casing Fluid Level from Surface: How Determined? Date:
Casing Squeeze(s): to w / sacks of cement, to w / sacks of cement. Date:
Do you have a valid Oil & Gas Lease? Yes No
Depth and Type: Junk in Hole at Tools in Hole at Casing Leaks: Yes No Depth of casing leak(s):
Type Completion: ALT. I ALT. II Depth of: DV Tool: w / sacks of cement Port Collar: w / sack of cement
Packer Type: Size: Inch Set at: Feet
Total Depth: Plug Back Depth: Plug Back Method:

Geological Date:

Table with 4 columns: Formation Name, Formation Top, Formation Base, Completion Information. Rows 1 and 2.

UNDER PENALTY OF PERJURY I HEREBY ATTEST THAT THE INFORMATION CONTAINED HEREIN IS TRUE AND CORRECT TO THE BEST OF MY KNOWLEDGE

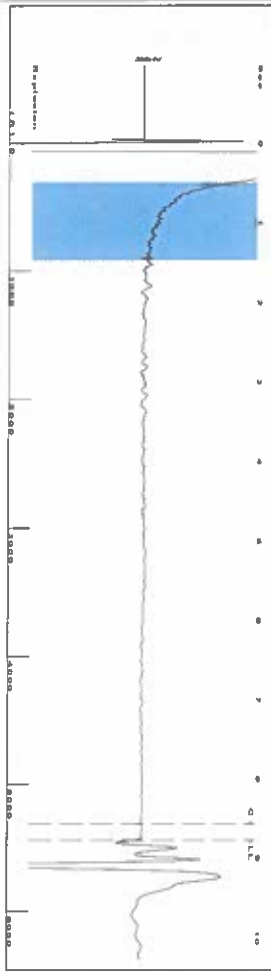
Submitted Electronically

Form with fields: Do NOT Write in This Space - KCC USE ONLY, Date Tested, Results, Date Plugged, Date Repaired, Date Put Back in Service, Review Completed by, Comments, TA Approved: Yes Denied, Date.

Mail to the Appropriate KCC Conservation Office:

Table with 2 columns: Office Address, Phone. Rows for KCC District Office #1, #2, #3, #4.

Group: SUBLETTE Well: Green H-2 (acquired on: 10/18/23 13:30:45)



Filter Type High Pass Automatic Collar Count Yes
 Manual Acoustic Velo 1200.76 ft/s Manual JTS/sec 18.9394
 Time 8.785 sec
 Joints 171.78 Jts
 Depth 5445.41 ft

0.5 to 1.5 (Sec)



Analysis Method: Automatic

Group: SUBLETTE Well: Green H-2 (acquired on: 10/18/23 13:30:45)

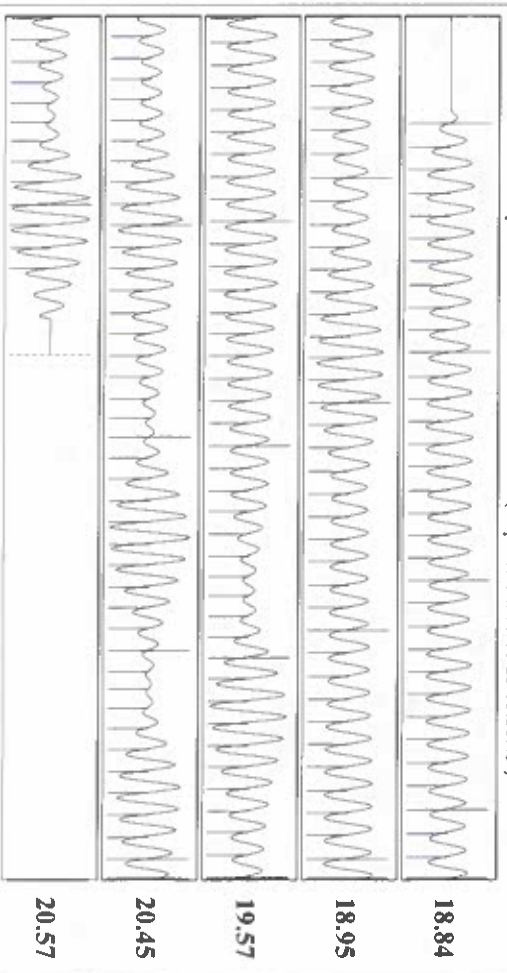
Production	Potential	Casing Pressure	Producing
Current	BBL/D	221.3 psi (g)	Annular
Oil	BBL/D	Casing Pressure Buildup	Gas Flow
Water	Mscf/D	-0.003 psi	% Liquid
Gas	Mscf/D	1.00 min	100 %
IPR Method	Vogel	Gas/Liquid Interface Pressure	% Mscf/D
PBHP/SBHP	-	256.4 psi (g)	
Production Efficiency	0.0		
Liquid Level Depth	Liquid Level Depth	Pump Intake	Pump Intake
Oil 40 deg API	5445.41 ft	260.2 psi (g)	260.2 psi (g)
Water 1.05 Sp.Gr:H2O	Pump Intake Depth	Producing BHP	256.0 psi (g)
Gas 0.74 Sp.Gr:AIR	5457.00 ft	Static BHP	- psi (g)
Acoustic Velocity	Acoustic Velocity	Formation Depth	
1239.71 ft/s	1239.71 ft/s	5392.00 ft	

Group: SUBLETTE Well: Green H-2 (acquired on: 10/18/23 13:30:45)



Change in Pressure -0.00 psi
 Change in Time 1.00 min
 PTT 6716
 Range 0 - 2 psi

Group: SUBLETTE Well: Green H-2 (acquired on: 10/18/23 13:30:45)



Acoustic Velocity	1239.71 ft/s	Joints counted	163
Joints Per Second	19.5537 jts/sec	Joints to liquid level	171.78
Depth to liquid level	5445.41 ft	Filter Width	16.9394
Automatic Collar Count	Yes	Time to 1st Collar	0.248

Conservation Division
District Office No. 1
210 E. Frontview, Suite A
Dodge City, KS 67801



Phone: 620-682-7933
<http://kcc.ks.gov/>

Andrew J. French, Chairperson
Dwight D. Keen, Commissioner
Annie Kuether, Commissioner

Laura Kelly, Governor

10/20/2023

Katherine McClurkan
Merit Energy Company, LLC
13727 NOEL ROAD, SUITE 1200
DALLAS, TX 75240-7362

Re: Temporary Abandonment
API 15-081-22041-00-00
Green H 2
SW/4 Sec.10-28S-34W
Haskell County, Kansas

Dear Katherine McClurkan:

"Your temporary abandonment (TA) application for the well listed above has been approved. In accordance with K.A.R. 82-3-111 the TA status of this well will expire 10/20/2024.

- * If you return this well to service or plug it, please notify the District Office.
- * If you sell this well you are required to file a Transfer of Operator form, T-1.
- * If the well will remain temporarily abandoned, you must submit a new TA application, CP-111, before 10/20/2024.

You may contact me at the number above if you have questions.

Very truly yours,

Michael Maier"