

KANSAS CORPORATION COMMISSION
OIL & GAS CONSERVATION DIVISION

TEMPORARY ABANDONMENT WELL APPLICATION

All blanks must be complete

OPERATOR: License# _____
 Name: _____
 Address 1: _____
 Address 2: _____
 City: _____ State: _____ Zip: _____ + _____
 Contact Person: _____
 Phone:(_____) _____
 Contact Person Email: _____
 Field Contact Person: _____
 Field Contact Person Phone: (_____) _____

API No. 15- _____
 Spot Description: _____
 _____ - _____ - _____ - _____ Sec. _____ Twp. _____ S. R. _____ E W
 _____ feet from N / S Line of Section
 _____ feet from E / W Line of Section
 GPS Location: Lat: _____, Long: _____
(e.g. xx.xxxxx) (e.g. -xxx.xxxxx)
 Datum: NAD27 NAD83 WGS84
 County: _____ Elevation: _____ GL KB
 Lease Name: _____ Well #: _____
 Well Type: (check one) Oil Gas OG WSW Other: _____
 SWD Permit #: _____ ENHR Permit #: _____
 Gas Storage Permit #: _____
 Spud Date: _____ Date Shut-In: _____

	Conductor	Surface	Production	Intermediate	Liner	Tubing
Size						
Setting Depth						
Amount of Cement						
Top of Cement						
Bottom of Cement						

Casing Fluid Level from Surface: _____ How Determined? _____ Date: _____
 Casing Squeeze(s): _____ to _____ w / _____ sacks of cement, _____ to _____ w / _____ sacks of cement. Date: _____
(top) (bottom) (top) (bottom)
 Do you have a valid Oil & Gas Lease? Yes No
 Depth and Type: Junk in Hole at _____ Tools in Hole at _____ Casing Leaks: Yes No Depth of casing leak(s): _____
(depth) (depth)
 Type Completion: ALT. I ALT. II Depth of: DV Tool: _____ w / _____ sacks of cement Port Collar: _____ w / _____ sack of cement
(depth) (depth)
 Packer Type: _____ Size: _____ Inch Set at: _____ Feet
 Total Depth: _____ Plug Back Depth: _____ Plug Back Method: _____

Geological Data:

Formation Name	Formation Top	Formation Base	Completion Information
1. _____	At: _____ to _____ Feet	Perforation Interval _____ to _____ Feet or Open Hole Interval _____ to _____ Feet	
2. _____	At: _____ to _____ Feet	Perforation Interval _____ to _____ Feet or Open Hole Interval _____ to _____ Feet	

UNDER PENALTY OF PERJURY I HEREBY ATTEST THAT THE INFORMATION CONTAINED HEREIN IS TRUE AND CORRECT TO THE BEST OF MY KNOWLEDGE

Submitted Electronically

Do NOT Write in This Space - KCC USE ONLY	Date Tested: _____	Results: _____	Date Plugged: _____	Date Repaired: _____	Date Put Back in Service: _____
	Review Completed by: _____ Comments: _____				
TA Approved: <input type="checkbox"/> Yes <input type="checkbox"/> Denied Date: _____					

Mail to the Appropriate KCC Conservation Office:

	KCC District Office #1 - 210 E. Frontview, Suite A, Dodge City, KS 67801	Phone 620.682.7933
	KCC District Office #2 - 3450 N. Rock Road, Building 600, Suite 601, Wichita, KS 67226	Phone 316.337.7400
	KCC District Office #3 - 137 E. 21st St., Chanute, KS 66720	Phone 620.902.6450
	KCC District Office #4 - 2301 E. 13th Street, Hays, KS 67601-2651	Phone 785.261.6250

File Mode Option Tools Help

Acquire Mode

Recall Mode

F2

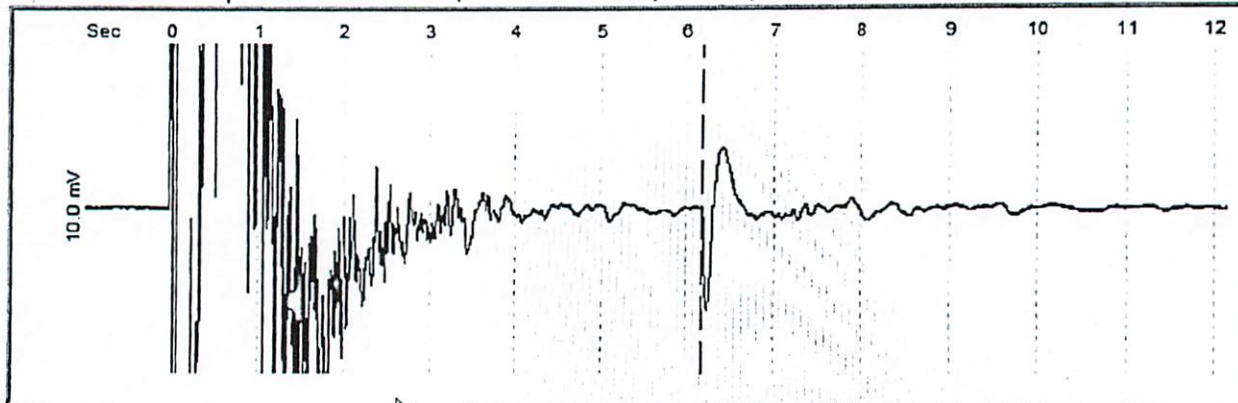
Data Files

F3

Select Test

F4 Analyze

Select Liquid Level | Depth Determination | Casing Pressure | BHP | Collars



Indicator @ 6.173 sec

Apply Low Pass Filter

Move Indicator

← Left

Right →

Go to Automatically Selected Kicks

<< Prev Kick

Next Kick >>

Reset

Scale Shot Trace

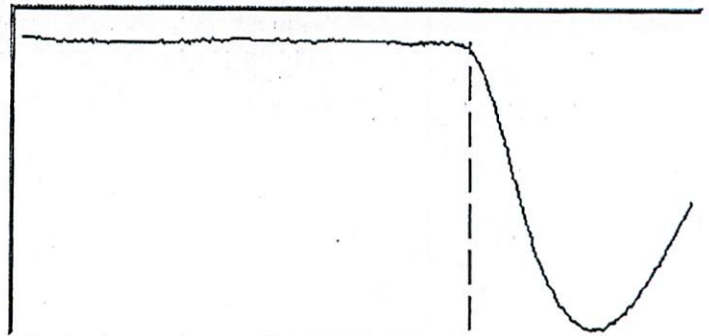
Scale Up

Scale Down

Reset

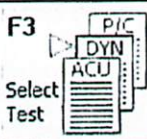
[Alt-] Gun Parameters

Pulse Type: Explosion Implosion



< Pg Up | Pg Dwn >

Acquire Mode
Recall Mode



Select Liquid Level		Depth Determination	
	Current	Potential	
Oil			BBL/D
Water			BBL/D
Gas			Mscf/D

IPR Method

PBHP/SBHP

Producing Efficiency %

Fluid Densities	
Oil	<input type="text" value="40"/> deg API
Water	<input type="text" value="1.05"/> Sp.Gr.H2O
Gas Gravity	<input type="text" value="0.71"/> Air = 1

Acoustic Velocity ft/s

SBHP Worksheet...

Casing Pressure BHP

Casing Pressure psi (g)

Casing Pressure Buildup psi

min

Gas/Liquid Interface Pres. psi (g)

Liquid Level Depth MD ft

Formation Depth MD ft



Well State:

Oil Column Height MD ft

Water Column Height MD

Reservoir Pressure (SBHP) psi (g)

Pump Submergence

Comment

Conservation Division
District Office No. 1
210 E. Frontview, Suite A
Dodge City, KS 67801



Phone: 620-682-7933
<http://kcc.ks.gov/>

Andrew J. French, Chairperson
Dwight D. Keen, Commissioner
Annie Kuether, Commissioner

Laura Kelly, Governor

10/26/2023

Allen Smith
Raymond Oil Company, Inc.
PO BOX 48788
WICHITA, KS 67201-8788

Re: Temporary Abandonment
API 15-185-22950-00-00
RUNDELL 1-E
NE/4 Sec.32-25S-11W
Stafford County, Kansas

Dear Allen Smith:

"Your temporary abandonment (TA) application for the well listed above has been approved. In accordance with K.A.R. 82-3-111 the TA status of this well will expire 10/26/2024.

- * If you return this well to service or plug it, please notify the District Office.
- * If you sell this well you are required to file a Transfer of Operator form, T-1.
- * If the well will remain temporarily abandoned, you must submit a new TA application, CP-111, before 10/26/2024.

You may contact me at the number above if you have questions.

Very truly yours,

Michael Maier"