

KANSAS CORPORATION COMMISSION
OIL & GAS CONSERVATION DIVISION

TEMPORARY ABANDONMENT WELL APPLICATION

OPERATOR: License#
Name:
Address 1:
Address 2:
City: State: Zip:
Contact Person:
Phone:
Contact Person Email:
Field Contact Person:
Field Contact Person Phone:

API No. 15-
Spot Description:
Sec. Twp. S. R.
GPS Location: Lat: Long:
Datum:
County: Elevation:
Lease Name: Well #:
Well Type:
SWD Permit #: ENHR Permit #:
Gas Storage Permit #:
Spud Date: Date Shut-In:

Table with 7 columns: Conductor, Surface, Production, Intermediate, Liner, Tubing. Rows include Size, Setting Depth, Amount of Cement, Top of Cement, Bottom of Cement.

Casing Fluid Level from Surface: How Determined? Date:
Casing Squeeze(s): to w / sacks of cement, to w / sacks of cement. Date:
Do you have a valid Oil & Gas Lease? Yes No
Depth and Type: Junk in Hole at Tools in Hole at Casing Leaks: Yes No Depth of casing leak(s):
Type Completion: ALT. I ALT. II Depth of: DV Tool: w / sacks of cement Port Collar: w / sack of cement
Packer Type: Size: Inch Set at: Feet
Total Depth: Plug Back Depth: Plug Back Method:

Geological Data:

Table with 4 columns: Formation Name, Formation Top, Formation Base, Completion Information. Rows 1 and 2.

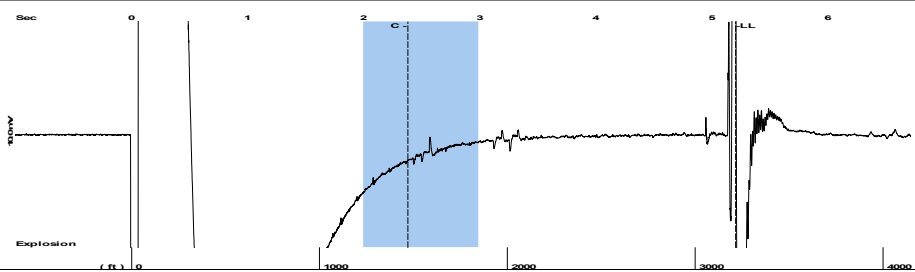
UNDER PENALTY OF PERJURY I HEREBY ATTEST THAT THE INFORMATION CONTAINED HEREIN IS TRUE AND CORRECT TO THE BEST OF MY KNOWLEDGE

Submitted Electronically

Do NOT Write in This Space - KCC USE ONLY
Date Tested: Results: Date Plugged: Date Repaired: Date Put Back in Service:
Review Completed by: Comments:
TA Approved: Yes Denied Date:

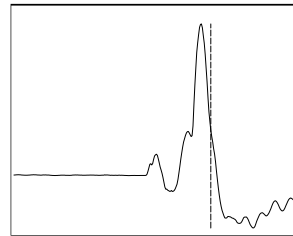
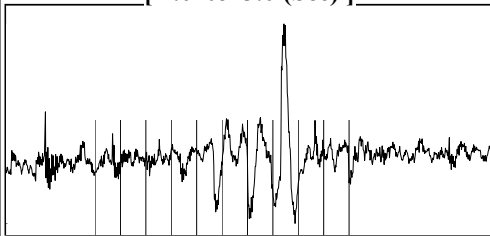
Mail to the Appropriate KCC Conservation Office:

Table with 2 columns: Office Address, Phone. Rows for District Office #1, #2, #3, #4.



Filter Type High Pass Automatic Collar Count Yes Time 5.204 sec  
 Manual Acoustic Veloc 1214.56 ft/s Manual JTS/sec 19.1571 Joints 101.409 Jts  
 Depth 3214.66 ft

[ 2.0 to 3.0 (Sec) ]

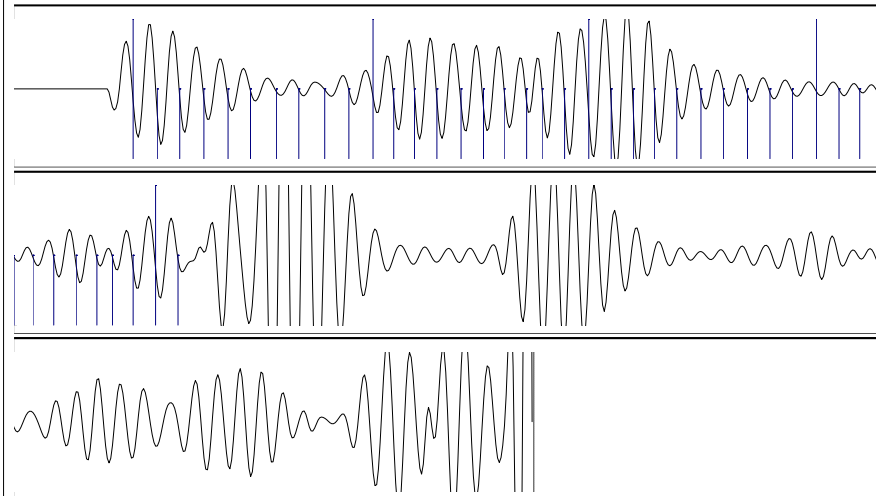


Analysis Method: Automatic

NO PRESSURE DATA AVAILABLE

Change in Pressure 0.00 psi PT18514  
 Range 0 - ? psi  
 Change in Time 0.00 min

Production Current	Potential	Casing Pressure	Producing
Oil - *-	- *- BBL/D	165.4 psi (g)	Annular Gas Flow - *- Mscf/D
Water - *-	- *- BBL/D	Casing Pressure Buildup - *- psi	% Liquid 100 %
Gas - *-	- *- Mscf/D	- *- min	
IPR Method	Vogel	Gas/Liquid Interface Pressure - *- psi (g)	
PBHP/SBHP	- *-		
Production Efficiency	0.0	Liquid Level Depth 3214.66 ft	
Oil 40 deg.API		Pump Intake Depth - *- ft	
Water 1.05 Sp.Gr.H2O		Formation Depth 3600.00 ft	
Gas 0.74 Sp.Gr.AIR			
Acoustic Velocity 1235.46 ft/s			
Formation Submergence			
Total Gaseous Liquid Column HT (TVD) - *- ft			
Equivalent Gas Free Liquid HT (TVD) - *- ft			
Acoustic Test			



19.14  
21.05

Acoustic Velocity	1235.46 ft/s	Joints counted	41
Joints Per Second	19.4867 jts/sec	Joints to liquid level	101.409
Depth to liquid level	3214.66 ft	Filter Width	17.1571 21.1571
Automatic Collar Count	Yes	Time to 1st Collar	0.276 2.38

10/30/2023

Jose Reyes  
American Warrior, Inc.  
PO BOX 399  
GARDEN CITY, KS 67846-0399

Re: Temporary Abandonment  
API 15-009-24938-00-00  
CURTIS FISHER 2-33  
SW/4 Sec.33-20S-12W  
Barton County, Kansas

Dear Jose Reyes:

"Your temporary abandonment (TA) application for the well listed above has been approved. In accordance with K.A.R. 82-3-111 the TA status of this well will expire 10/30/2024.

- \* If you return this well to service or plug it, please notify the District Office.
- \* If you sell this well you are required to file a Transfer of Operator form, T-1.
- \* If the well will remain temporarily abandoned, you must submit a new TA application, CP-111, before 10/30/2024.

You may contact me at the number above if you have questions.

Very truly yours,

RICHARD WILLIAMS"