

KANSAS CORPORATION COMMISSION
OIL & GAS CONSERVATION DIVISION

TEMPORARY ABANDONMENT WELL APPLICATION

OPERATOR: License#
Name:
Address 1:
Address 2:
City: State: Zip:
Contact Person:
Phone:
Contact Person Email:
Field Contact Person:
Field Contact Person Phone:

API No. 15-
Spot Description:
Sec. Twp. S. R.
GPS Location: Lat: Long:
Datum: NAD27 NAD83 WGS84
County: Elevation:
Lease Name: Well #:
Well Type: Oil Gas OG WSW Other:
SWD Permit #: ENHR Permit #:
Gas Storage Permit #:
Spud Date: Date Shut-In:

Table with 7 columns: Conductor, Surface, Production, Intermediate, Liner, Tubing. Rows include Size, Setting Depth, Amount of Cement, Top of Cement, Bottom of Cement.

Casing Fluid Level from Surface: How Determined? Date:
Casing Squeeze(s): to w / sacks of cement, to w / sacks of cement. Date:
Do you have a valid Oil & Gas Lease? Yes No
Depth and Type: Junk in Hole at Tools in Hole at Casing Leaks: Yes No Depth of casing leak(s):
Type Completion: ALT. I ALT. II Depth of: DV Tool: w / sacks of cement Port Collar: w / sack of cement
Packer Type: Size: Inch Set at: Feet
Total Depth: Plug Back Depth: Plug Back Method:

Geological Data:

Table with 4 columns: Formation Name, Formation Top, Formation Base, Completion Information. Rows 1 and 2.

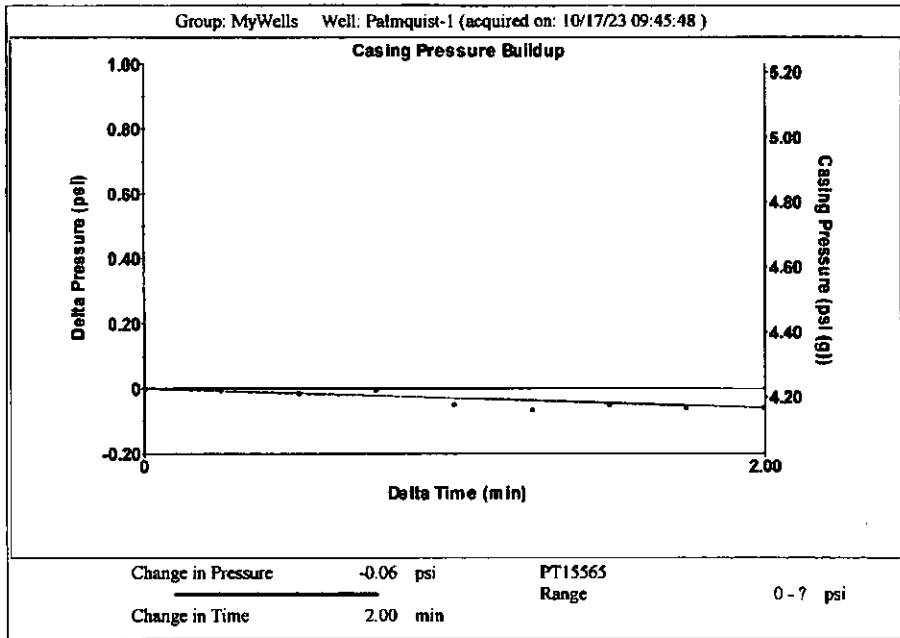
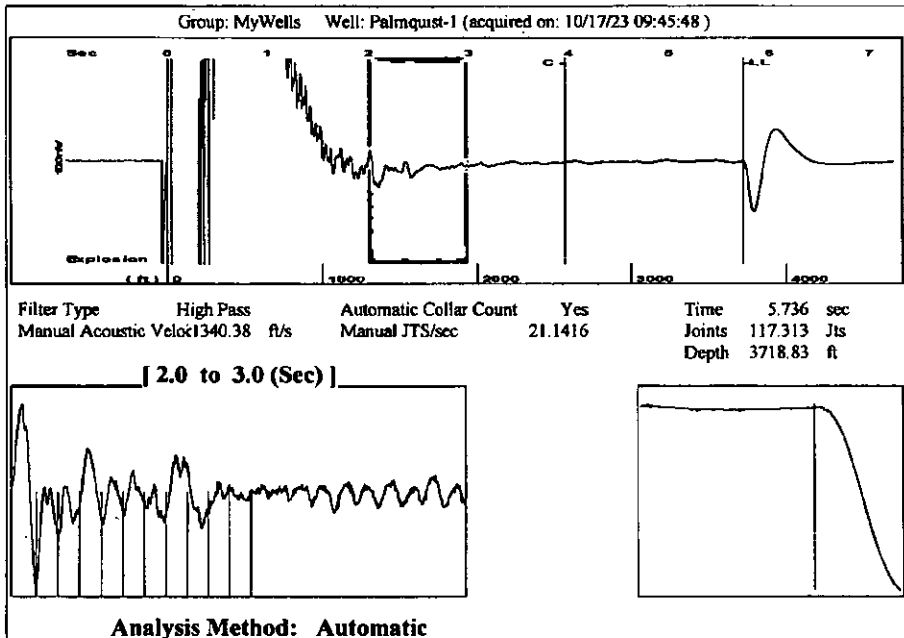
UNDER PENALTY OF PERJURY I HEREBY ATTEST THAT THE INFORMATION CONTAINED HEREIN IS TRUE AND CORRECT TO THE BEST OF MY KNOWLEDGE

Submitted Electronically

Do NOT Write in This Space - KCC USE ONLY
Date Tested: Results: Date Plugged: Date Repaired: Date Put Back in Service:
Review Completed by: Comments:
TA Approved: Yes Denied Date:

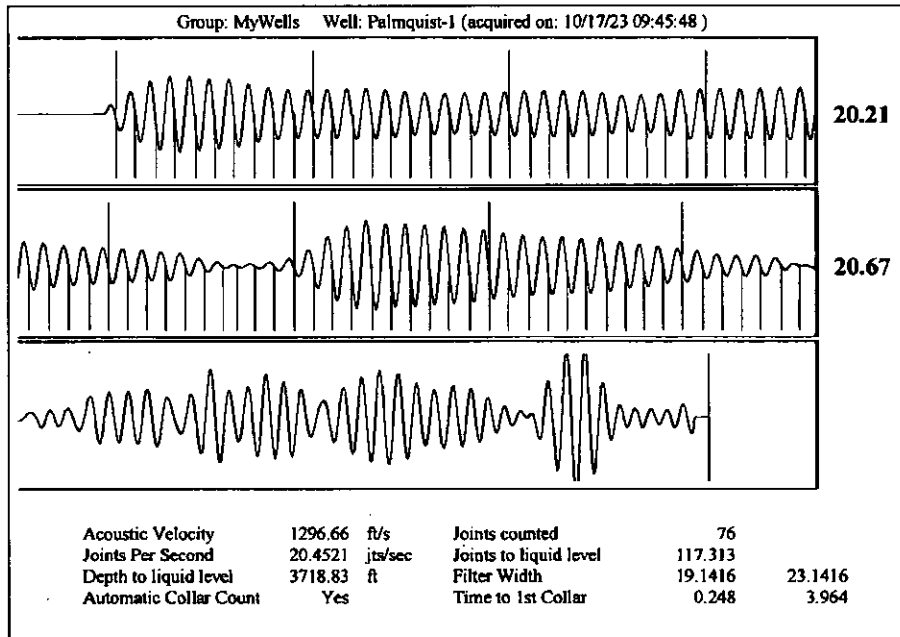
Mail to the Appropriate KCC Conservation Office:

Table with 3 columns: District Office #, Address, Phone. Rows 1-4.



Group: MyWells Well: Palmquist-1 (acquired on: 10/17/23 09:45:48)

Production	Potential	Casing Pressure		Producing
Current		4.2 psi (g)		Annular Gas Flow
Oil -*- BBL/D	-*- BBL/D	Casing Pressure Buildup		-*- Mscf/D
Water -*- BBL/D	-*- BBL/D	-0.058 psi		% Liquid
Gas -*- Mscf/D	-*- Mscf/D	2.00 min		100 %
IPR Method Vogel		Gas/Liquid Interface Pressure		
PBHP/SBHP -*-	-*-	-*- psi (g)		
Production Efficiency 0.0		Liquid Level Depth		
Oil 40 deg.API		3718.83 ft		
Water 1.05 Sp.Gr.H2O		Pump Intake Depth		
Gas 0.71 Sp.Gr.AIR		-*- ft		
Acoustic Velocity 1296.66 ft/s		Formation Depth		
		4600.00 ft		
Formation Submergence		Pump Intake		
Total Gaseous Liquid Column HT (TVD) -*- ft		-*- psi (g)		
Equivalent Gas Free Liquid HT (TVD) -*- ft		Producing BHP		
		-*- psi (g)		
Palmquist 1		Static BHP		
		-*- psi (g)		



Conservation Division
District Office No. 1
210 E. Frontview, Suite A
Dodge City, KS 67801



Phone: 620-682-7933
<http://kcc.ks.gov/>

Andrew J. French, Chairperson
Dwight D. Keen, Commissioner
Annie Kuether, Commissioner

Laura Kelly, Governor

11/01/2023

Anthony Farrar
Indian Oil Co., Inc.
308 S. Main St.
PO BOX 209
MEDICINE LODGE, KS 67104-0209

Re: Temporary Abandonment
API 15-151-20356-00-00
PALMQUIST 1
SE/4 Sec.32-29S-13W
Pratt County, Kansas

Dear Anthony Farrar:

"Your temporary abandonment (TA) application for the well listed above has been approved. In accordance with K.A.R. 82-3-111 the TA status of this well will expire 11/01/2024.

- * If you return this well to service or plug it, please notify the District Office.
- * If you sell this well you are required to file a Transfer of Operator form, T-1.
- * If the well will remain temporarily abandoned, you must submit a new TA application, CP-111, before 11/01/2024.

You may contact me at the number above if you have questions.

Very truly yours,

Michael Maier"