

KANSAS CORPORATION COMMISSION
OIL & GAS CONSERVATION DIVISION

TEMPORARY ABANDONMENT WELL APPLICATION

OPERATOR: License# _____
 Name: _____
 Address 1: _____
 Address 2: _____
 City: _____ State: _____ Zip: _____ + _____
 Contact Person: _____
 Phone: (_____) _____
 Contact Person Email: _____
 Field Contact Person: _____
 Field Contact Person Phone: (_____) _____

API No. 15- _____
 Spot Description: _____
 _____ - _____ - _____ - _____ Sec. _____ Twp. _____ S. R. _____ E W
 _____ feet from N / S Line of Section
 _____ feet from E / W Line of Section
 GPS Location: Lat: _____, Long: _____
(e.g. xx.xxxxx) (e.g. -xxx.xxxxx)
 Datum: NAD27 NAD83 WGS84
 County: _____ Elevation: _____ GL KB
 Lease Name: _____ Well #: _____
 Well Type: (check one) Oil Gas OG WSW Other: _____
 SWD Permit #: _____ ENHR Permit #: _____
 Gas Storage Permit #: _____
 Spud Date: _____ Date Shut-In: _____

| | Conductor | Surface | Production | Intermediate | Liner | Tubing |
|------------------|-----------|---------|------------|--------------|-------|--------|
| Size | | | | | | |
| Setting Depth | | | | | | |
| Amount of Cement | | | | | | |
| Top of Cement | | | | | | |
| Bottom of Cement | | | | | | |

Casing Fluid Level from Surface: _____ How Determined? _____ Date: _____
 Casing Squeeze(s): _____ to _____ w / _____ sacks of cement, _____ to _____ w / _____ sacks of cement. Date: _____
(top) (bottom) (top) (bottom)
 Do you have a valid Oil & Gas Lease? Yes No
 Depth and Type: Junk in Hole at _____ Tools in Hole at _____ Casing Leaks: Yes No Depth of casing leak(s): _____
(depth) (depth)
 Type Completion: ALT. I ALT. II Depth of: DV Tool: _____ w / _____ sacks of cement Port Collar: _____ w / _____ sack of cement
(depth) (depth)
 Packer Type: _____ Size: _____ Inch Set at: _____ Feet
 Total Depth: _____ Plug Back Depth: _____ Plug Back Method: _____

Geological Data:

| Formation Name | Formation Top | Formation Base | Completion Information |
|----------------|---------------|----------------|--|
| 1. _____ | At: _____ | to _____ Feet | Perforation Interval _____ to _____ Feet or Open Hole Interval _____ to _____ Feet |
| 2. _____ | At: _____ | to _____ Feet | Perforation Interval _____ to _____ Feet or Open Hole Interval _____ to _____ Feet |

UNDER PENALTY OF PERJURY I HEREBY ATTEST THAT THE INFORMATION CONTAINED HEREIN IS TRUE AND CORRECT TO THE BEST OF MY KNOWLEDGE

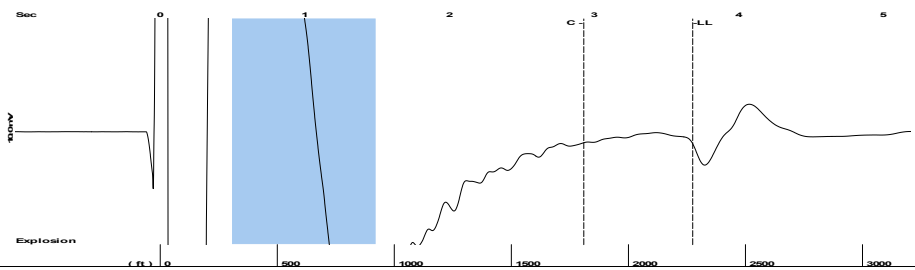
Submitted Electronically

| | | | | | |
|---|--|----------------|---------------------|----------------------|---------------------------------|
| Do NOT Write in This Space - KCC USE ONLY | Date Tested: _____ | Results: _____ | Date Plugged: _____ | Date Repaired: _____ | Date Put Back in Service: _____ |
| | Review Completed by: _____ Comments: _____ | | | | |
| TA Approved: <input type="checkbox"/> Yes <input type="checkbox"/> Denied Date: _____ | | | | | |

Mail to the Appropriate KCC Conservation Office:

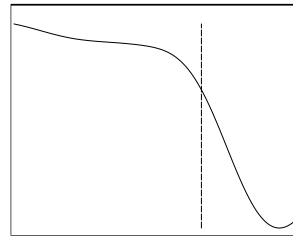
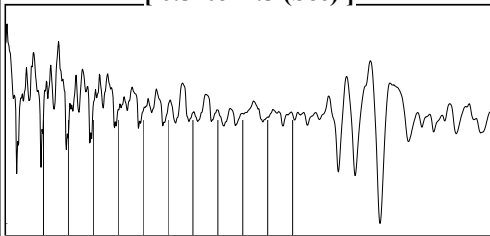
| | | |
|--|--|--------------------|
|  | KCC District Office #1 - 210 E. Frontview, Suite A, Dodge City, KS 67801 | Phone 620.682.7933 |
| | KCC District Office #2 - 3450 N. Rock Road, Building 600, Suite 601, Wichita, KS 67226 | Phone 316.337.7400 |
| | KCC District Office #3 - 137 E. 21st St., Chanute, KS 66720 | Phone 620.902.6450 |
| | KCC District Office #4 - 2301 E. 13th Street, Hays, KS 67601-2651 | Phone 785.261.6250 |

Group: MyWells Well: KISNER # 1-21 (acquired on: 11/02/23 16:24:42)



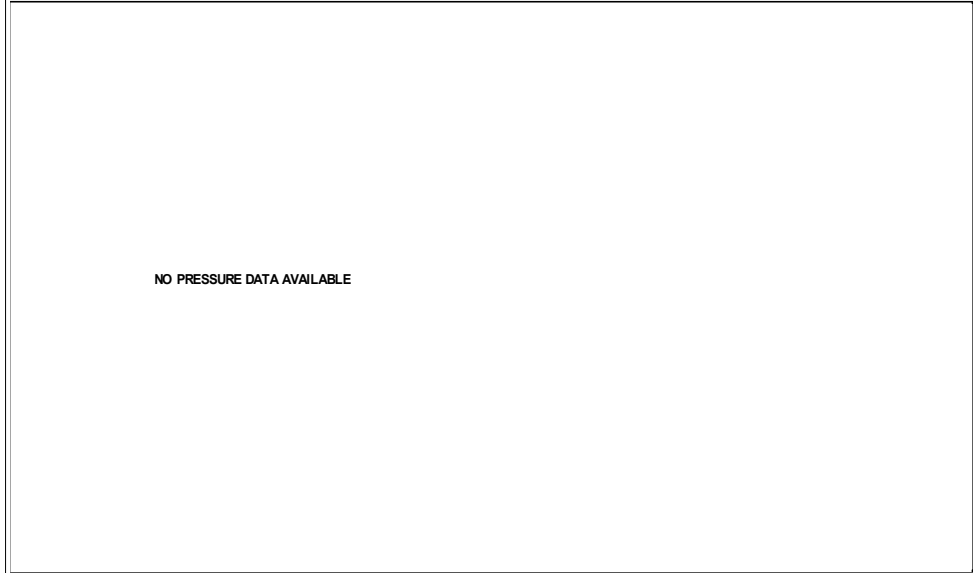
Filter Type High Pass Automatic Collar Count Yes Time 3.681 sec
 Manual Acoustic Veloc 1238.28 ft/s Manual JTS/sec 19.5312 Joints 71.7436 Jts
 Depth 2274.27 ft

[0.5 to 1.5 (Sec)]



Analysis Method: Automatic

Group: MyWells Well: KISNER # 1-21 (acquired on: 11/02/23 16:24:42)



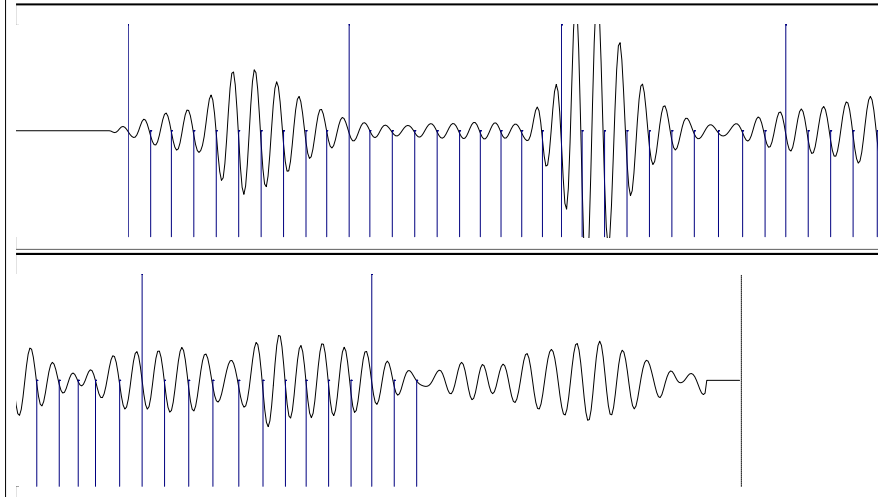
Change in Pressure 0.00 psi PT13682
 Range 0 - ? psi
 Change in Time 0.00 min

Group: MyWells Well: KISNER # 1-21 (acquired on: 11/02/23 16:24:42)

| | | | | | | | |
|--------------------------------------|----------------|-------------------------------|--------|-------------------------|---------|-----------|-------|
| Production | | Potential | | Casing Pressure | | Producing | |
| Oil | - * - | - * - | BBL/D | 0.0 | psi (g) | Annular | |
| Water | - * - | - * - | BBL/D | Casing Pressure Buildup | - * - | Gas Flow | - * - |
| Gas | - * - | - * - | Mscf/D | - * - | psi | % Liquid | 100 % |
| | | | | - * - | min | | |
| IPR Method | Vogel | Gas/Liquid Interface Pressure | | - * - | psi (g) | | |
| PBHP/SBHP | - * - | Liquid Level Depth | | | | | |
| Production Efficiency | 0.0 | 2274.27 ft | | | | | |
| Oil | 40 deg.API | Pump Intake Depth | | | | | |
| Water | 1.05 Sp.Gr.H2O | - * - ft | | | | | |
| Gas | 0.76 Sp.Gr.AIR | Formation Depth | | | | | |
| Acoustic Velocity | 1235.68 ft/s | 2885.00 ft | | | | | |
| Formation Submergence | | | | | | | |
| Total Gaseous Liquid Column HT (TVD) | | - * - ft | | | | | |
| Equivalent Gas Free Liquid HT (TVD) | | - * - ft | | | | | |
| Acoustic Test | | | | | | | |



Group: MyWells Well: KISNER # 1-21 (acquired on: 11/02/23 16:24:42)



| | | | |
|------------------------|-----------------|------------------------|-----------------|
| Acoustic Velocity | 1235.68 ft/s | Joints counted | 52 |
| Joints Per Second | 19.4903 jts/sec | Joints to liquid level | 71.7436 |
| Depth to liquid level | 2274.27 ft | Filter Width | 17.5312 21.5312 |
| Automatic Collar Count | Yes | Time to 1st Collar | 0.26 2.928 |

11/03/2023

Octavio Morales
American Warrior, Inc.
PO BOX 399
GARDEN CITY, KS 67846-0399

Re: Temporary Abandonment
API 15-055-10089-00-01
KISNER 1-21
SW/4 Sec.21-24S-31W
Finney County, Kansas

Dear Octavio Morales:

"Your temporary abandonment (TA) application for the well listed above has been approved. In accordance with K.A.R. 82-3-111 the TA status of this well will expire 11/03/2024.

- * If you return this well to service or plug it, please notify the District Office.
- * If you sell this well you are required to file a Transfer of Operator form, T-1.
- * If the well will remain temporarily abandoned, you must submit a new TA application, CP-111, before 11/03/2024.

You may contact me at the number above if you have questions.

Very truly yours,

Michael Maier"