

KANSAS CORPORATION COMMISSION
OIL & GAS CONSERVATION DIVISION

Form must be Typed
Form must be signed

TEMPORARY ABANDONMENT WELL APPLICATION

All blanks must be complete

OPERATOR: License#
Name:
Address 1:
Address 2:
City: State: Zip:
Contact Person:
Phone:
Contact Person Email:
Field Contact Person:
Field Contact Person Phone:

API No. 15-
Spot Description:
Sec. Twp. S. R.
feet from N / S Line of Section
feet from E / W Line of Section
GPS Location: Lat: , Long:
Datum: NAD27 NAD83 WGS84
County: Elevation: GL KB
Lease Name: Well #:
Well Type: Oil Gas OG WSW Other:
SWD Permit #: ENHR Permit #:
Gas Storage Permit #:
Spud Date: Date Shut-In:

Table with 7 columns: Conductor, Surface, Production, Intermediate, Liner, Tubing. Rows include Size, Setting Depth, Amount of Cement, Top of Cement, Bottom of Cement.

Casing Fluid Level from Surface: How Determined? Date:
Casing Squeeze(s): to w / sacks of cement, to w / sacks of cement. Date:
Do you have a valid Oil & Gas Lease? Yes No
Depth and Type: Junk in Hole at Tools in Hole at Casing Leaks: Yes No Depth of casing leak(s):
Type Completion: ALT. I ALT. II Depth of: DV Tool: w / sacks of cement Port Collar: w / sack of cement
Packer Type: Size: Inch Set at: Feet
Total Depth: Plug Back Depth: Plug Back Method:

Geological Date:

Table with 4 columns: Formation Name, Formation Top, Formation Base, Completion Information. Rows 1 and 2.

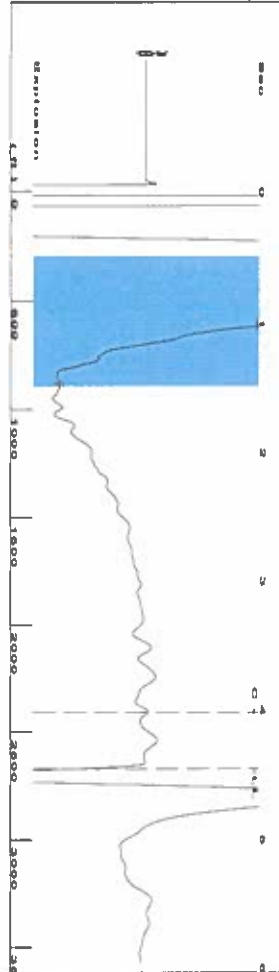
UNDER PENALTY OF PERJURY I HEREBY ATTEST THAT THE INFORMATION CONTAINED HEREIN IS TRUE AND CORRECT TO THE BEST OF MY KNOWLEDGE

Submitted Electronically

Do NOT Write in This Space - KCC USE ONLY
Date Tested: Results: Date Plugged: Date Repaired: Date Put Back in Service:
Review Completed by: Comments:
TA Approved: Yes Denied Date:

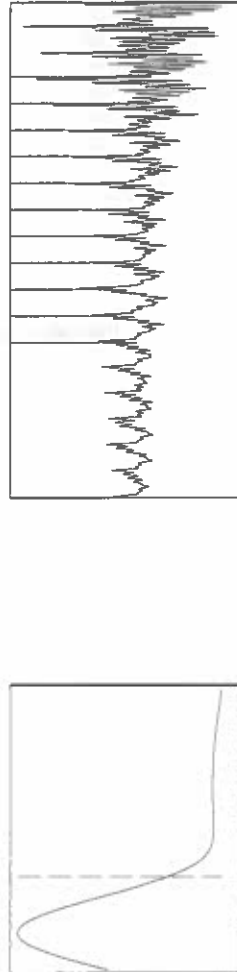
Mail to the Appropriate KCC Conservation Office:

Table with 3 columns: District Office #, Address, Phone. Includes map of Kansas with numbered districts 1-4.



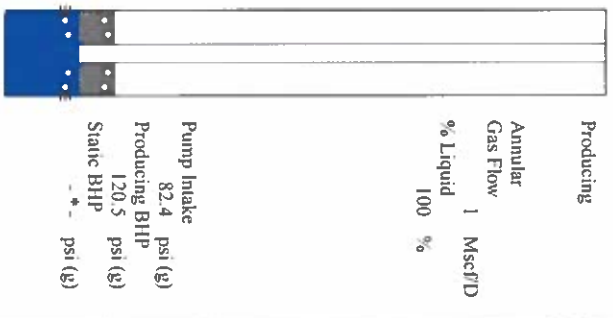
Filter Type High Pass Automatic Collar Count Yes
 Manual Acoustic Velo 1182.84 N/s Manual JTS/sec 18.6567
 Time 4.457 sec
 Joints 84.2511 Jts
 Depth 2670.76 ft

0.5 to 1.5 (Sec)



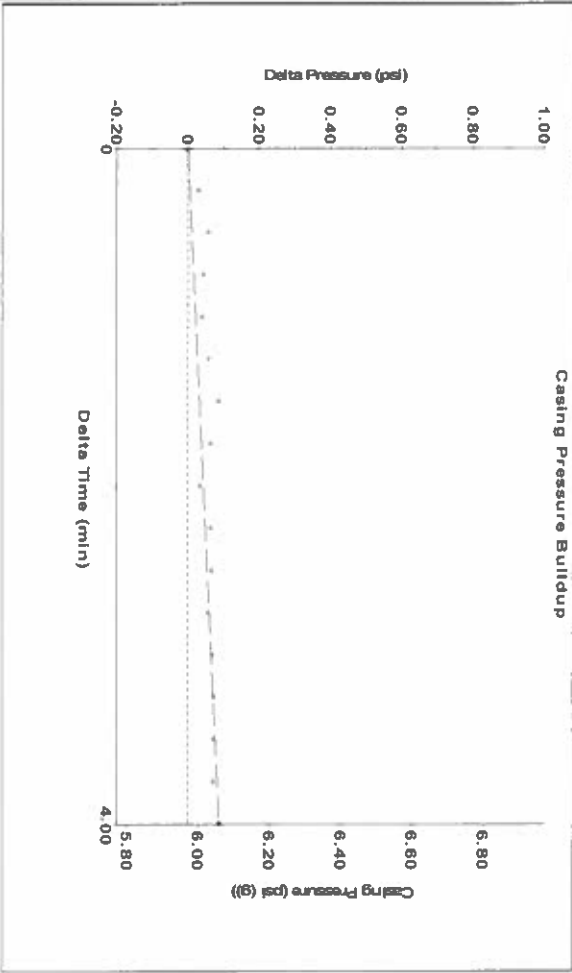
Analysis Method: Automatic

Production Current	Potential	Casing Pressure	Producing
Oil - *	BBL/D	6.0 psi (g)	Annular
Water - *	BBL/D	Casing Pressure Buildup	Gas Flow
Gas - *	Mscf/D	0.088 psi	% Liquid
IPR Method	Vogel	4.00 min	1 Mscf/D
PBHP/SBHP	- *	Gas/Liquid Interface Pressure	
Production Efficiency	0.0	7.5 psi (g)	
Oil 40 deg API		Liquid Level Depth	
Water 1.05 Sp.Gr.H2O		2670.76 ft	
Gas 0.80 Sp.Gr.AIR		Pump Intake Depth	
Acoustic Velocity	1198.46 ft/s	2891.00 ft	
		Formation Depth	
		2975.00 ft	

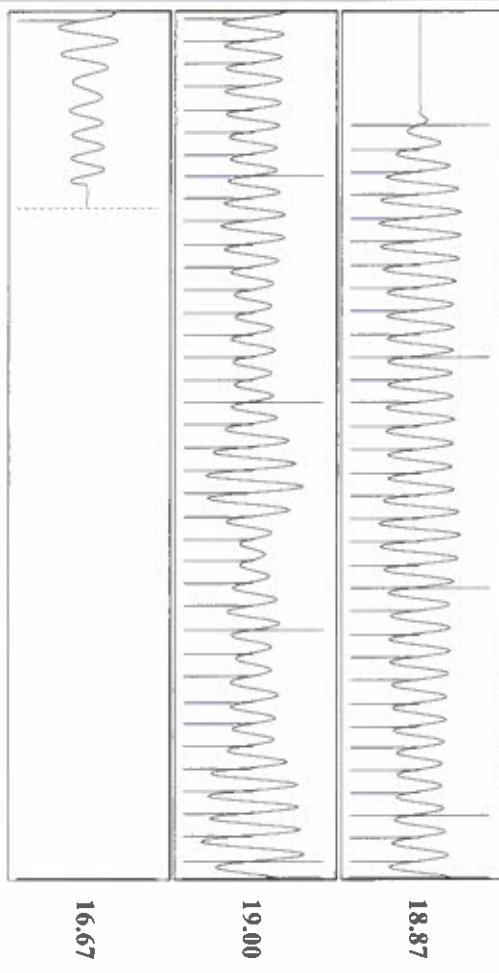


Formation Submergence
 Total Gaseous Liquid Column HT (TVD) 220 ft
 Equivalent Gas Free Liquid HT (TVD) 220 ft

8/31/23



Change in Pressure 0.09 psi
 Change in Time 4.00 min
 PT18868
 Range 0 - 7 psi



Acoustic Velocity 1198.46 ft/s
 Joints Per Second 18.9031 Jts/sec
 Depth to Liquid Level 2670.76 ft
 Automatic Collar Count Yes
 Joints counted 71
 Joints to liquid level 84.2511
 Filter Width 16.6567
 Time to 1st Collar 0.264

Conservation Division
District Office No. 1
210 E. Frontview, Suite A
Dodge City, KS 67801



Phone: 620-682-7933
<http://kcc.ks.gov/>

Andrew J. French, Chairperson
Dwight D. Keen, Commissioner
Annie Kuether, Commissioner

Laura Kelly, Governor

11/09/2023

Katherine McClurkan
Merit Energy Company, LLC
13727 NOEL ROAD, SUITE 1200
DALLAS, TX 75240-7362

Re: Temporary Abandonment
API 15-067-20598-00-00
Stanley C 3
SW/4 Sec.01-28S-35W
Grant County, Kansas

Dear Katherine McClurkan:

"Your temporary abandonment (TA) application for the well listed above has been approved. In accordance with K.A.R. 82-3-111 the TA status of this well will expire 11/09/2024.

- * If you return this well to service or plug it, please notify the District Office.
- * If you sell this well you are required to file a Transfer of Operator form, T-1.
- * If the well will remain temporarily abandoned, you must submit a new TA application, CP-111, before 11/09/2024.

You may contact me at the number above if you have questions.

Very truly yours,

Michael Maier"