

KANSAS CORPORATION COMMISSION
OIL & GAS CONSERVATION DIVISION

TEMPORARY ABANDONMENT WELL APPLICATION

OPERATOR: License#
Name:
Address 1:
Address 2:
City: State: Zip:
Contact Person:
Phone:
Contact Person Email:
Field Contact Person:
Field Contact Person Phone:

API No. 15-
Spot Description:
Sec. Twp. S. R.
GPS Location: Lat: Long:
Datum: NAD27 NAD83 WGS84
County: Elevation:
Lease Name: Well #:
Well Type: Oil Gas OG WSW Other:
SWD Permit #: ENHR Permit #:
Gas Storage Permit #:
Spud Date: Date Shut-In:

Table with 7 columns: Conductor, Surface, Production, Intermediate, Liner, Tubing. Rows include Size, Setting Depth, Amount of Cement, Top of Cement, Bottom of Cement.

Casing Fluid Level from Surface: How Determined? Date:
Casing Squeeze(s): to w / sacks of cement, to w / sacks of cement. Date:
Do you have a valid Oil & Gas Lease? Yes No
Depth and Type: Junk in Hole at Tools in Hole at Casing Leaks: Yes No Depth of casing leak(s):
Type Completion: ALT. I ALT. II Depth of: DV Tool: w / sacks of cement Port Collar: w / sack of cement
Packer Type: Size: Inch Set at: Feet
Total Depth: Plug Back Depth: Plug Back Method:

Geological Date:

Table with 4 columns: Formation Name, Formation Top, Formation Base, Completion Information. Rows 1 and 2.

UNDER PENALTY OF PERJURY I HEREBY ATTEST THAT THE INFORMATION CONTAINED HEREIN IS TRUE AND CORRECT TO THE BEST OF MY KNOWLEDGE

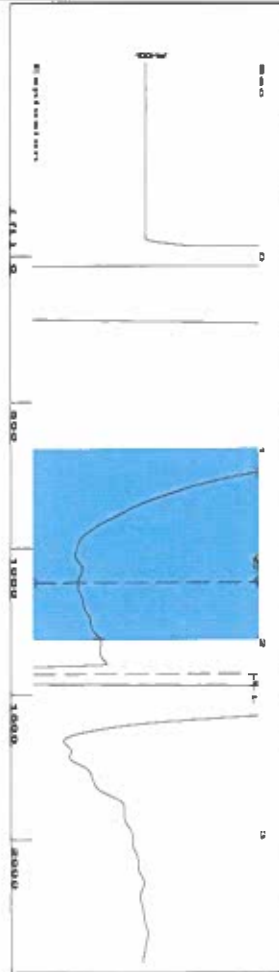
Submitted Electronically

Do NOT Write in This Space - KCC USE ONLY
Date Tested: Results: Date Plugged: Date Repaired: Date Put Back in Service:
Review Completed by: Comments:
TA Approved: Yes Denied Date:

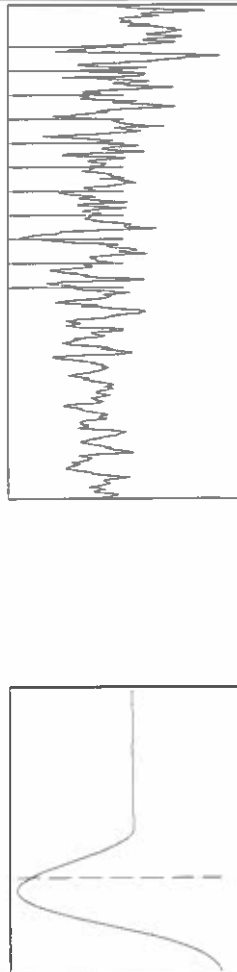
Mail to the Appropriate KCC Conservation Office:

Table with 2 columns: Office Address, Phone. Rows for District Office #1, #2, #3, #4.

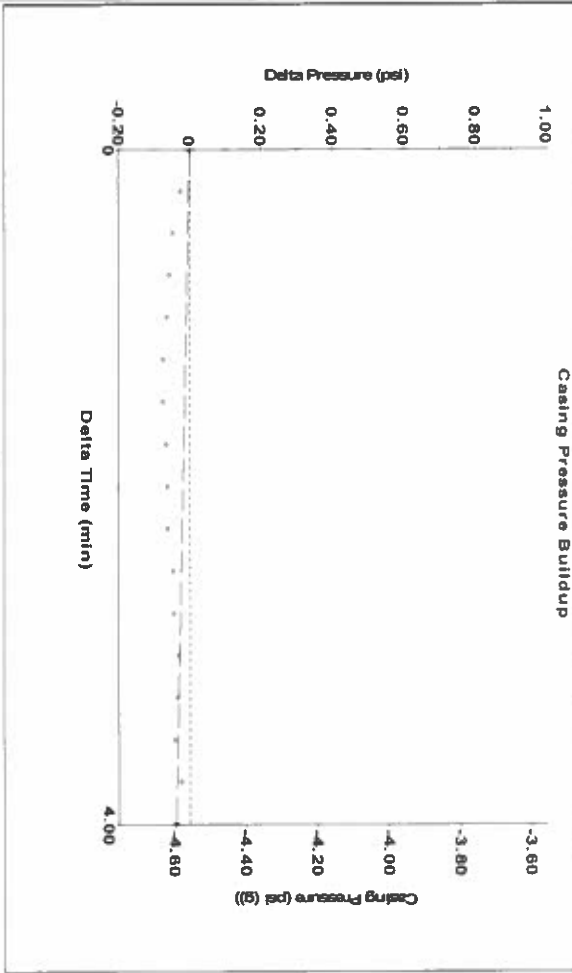
Group: Merit Energy Company-Ulysses Well: Wolff-C-1 (acquired on: 08/11/23 12:40:21)



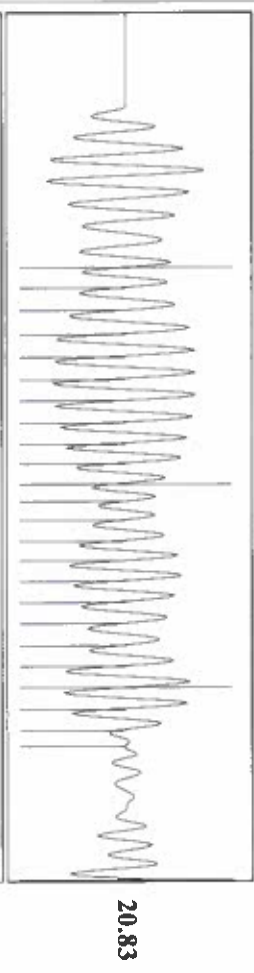
1.0 to 2.0 (Sec)



Group: Merit Energy Company-Ulysses Well: Wolff-C-1 (acquired on: 08/11/23 12:40:21)



Group: Merit Energy Company-Ulysses Well: Wolff-C-1 (acquired on: 08/11/23 12:40:21)



20.83

Production	Potential	Casing Pressure	Producing
Current		Pressure	Annular
Oil	Oil	-4.6 psi (g)	Gas Flow
Water	Water	Casing Pressure Buildup	0 Mscf/D
Gas	Gas	-0.0 psi	% Liquid
		4.00 min	100 %
IPR Method	Vogel	Gas/Liquid Interface Pressure	
PBHP/SBHP	0.0	-4.2 psi (g)	
Production Efficiency		Liquid Level Depth	
		1430.46 ft	
Oil	40 deg-API	Tubing Intake Depth	
Water	1.05 Sp.Gr.H2O	2700.00 ft	
Gas	0.68 Sp.Gr.AIR	Formation Depth	
		2554.00 ft	
Acoustic Velocity	1320.83 ft/s		

Formation Submergence	1124 ft
Total Gaseous Liquid Column HT (TVD)	1124 ft
Equivalent Gas Free Liquid HT (TVD)	1124 ft
8/11/23B	

Conservation Division  
District Office No. 1  
210 E. Frontview, Suite A  
Dodge City, KS 67801



Phone: 620-682-7933  
<http://kcc.ks.gov/>

Andrew J. French, Chairperson  
Dwight D. Keen, Commissioner  
Annie Kuether, Commissioner

Laura Kelly, Governor

11/09/2023

Katherine McClurkan  
Merit Energy Company, LLC  
13727 Noel Road, Suite 1200  
Dallas, TX 75240-7362

Re: Temporary Abandonment  
API 15-067-00180-00-00  
Wolff C 1  
NE/4 Sec.36-28S-36W  
Grant County, Kansas

Dear Katherine McClurkan:

"Your temporary abandonment (TA) application for the well listed above has been approved. In accordance with K.A.R. 82-3-111 the TA status of this well will expire 11/09/2024.

- \* If you return this well to service or plug it, please notify the District Office.
- \* If you sell this well you are required to file a Transfer of Operator form, T-1.
- \* If the well will remain temporarily abandoned, you must submit a new TA application, CP-111, before 11/09/2024.

You may contact me at the number above if you have questions.

Very truly yours,

Michael Maier"