

KANSAS CORPORATION COMMISSION  
OIL & GAS CONSERVATION DIVISION

TEMPORARY ABANDONMENT WELL APPLICATION

OPERATOR: License# \_\_\_\_\_  
 Name: \_\_\_\_\_  
 Address 1: \_\_\_\_\_  
 Address 2: \_\_\_\_\_  
 City: \_\_\_\_\_ State: \_\_\_\_\_ Zip: \_\_\_\_\_ + \_\_\_\_\_  
 Contact Person: \_\_\_\_\_  
 Phone: ( \_\_\_\_\_ ) \_\_\_\_\_  
 Contact Person Email: \_\_\_\_\_  
 Field Contact Person: \_\_\_\_\_  
 Field Contact Person Phone: ( \_\_\_\_\_ ) \_\_\_\_\_

API No. 15- \_\_\_\_\_  
 Spot Description: \_\_\_\_\_  
 \_\_\_\_\_ - \_\_\_\_\_ - \_\_\_\_\_ - \_\_\_\_\_ Sec. \_\_\_\_\_ Twp. \_\_\_\_\_ S. R. \_\_\_\_\_  E  W  
 \_\_\_\_\_ feet from  N /  S Line of Section  
 \_\_\_\_\_ feet from  E /  W Line of Section  
 GPS Location: Lat: \_\_\_\_\_, Long: \_\_\_\_\_  
(e.g. xx.xxxxx) (e.g. -xxx.xxxxx)  
 Datum:  NAD27  NAD83  WGS84  
 County: \_\_\_\_\_ Elevation: \_\_\_\_\_  GL  KB  
 Lease Name: \_\_\_\_\_ Well #: \_\_\_\_\_  
 Well Type: (check one)  Oil  Gas  OG  WSW  Other: \_\_\_\_\_  
 SWD Permit #: \_\_\_\_\_  ENHR Permit #: \_\_\_\_\_  
 Gas Storage Permit #: \_\_\_\_\_  
 Spud Date: \_\_\_\_\_ Date Shut-In: \_\_\_\_\_

	Conductor	Surface	Production	Intermediate	Liner	Tubing
Size						
Setting Depth						
Amount of Cement						
Top of Cement						
Bottom of Cement						

Casing Fluid Level from Surface: \_\_\_\_\_ How Determined? \_\_\_\_\_ Date: \_\_\_\_\_  
 Casing Squeeze(s): \_\_\_\_\_ to \_\_\_\_\_ w / \_\_\_\_\_ sacks of cement, \_\_\_\_\_ to \_\_\_\_\_ w / \_\_\_\_\_ sacks of cement. Date: \_\_\_\_\_  
(top) (bottom) (top) (bottom)  
 Do you have a valid Oil & Gas Lease?  Yes  No  
 Depth and Type:  Junk in Hole at \_\_\_\_\_  Tools in Hole at \_\_\_\_\_ Casing Leaks:  Yes  No Depth of casing leak(s): \_\_\_\_\_  
(depth) (depth)  
 Type Completion:  ALT. I  ALT. II Depth of:  DV Tool: \_\_\_\_\_ w / \_\_\_\_\_ sacks of cement  Port Collar: \_\_\_\_\_ w / \_\_\_\_\_ sack of cement  
(depth) (depth)  
 Packer Type: \_\_\_\_\_ Size: \_\_\_\_\_ Inch Set at: \_\_\_\_\_ Feet  
 Total Depth: \_\_\_\_\_ Plug Back Depth: \_\_\_\_\_ Plug Back Method: \_\_\_\_\_

**Geological Data:**

Formation Name	Formation Top	Formation Base	Completion Information
1. _____	At: _____	to _____ Feet	Perforation Interval _____ to _____ Feet or Open Hole Interval _____ to _____ Feet
2. _____	At: _____	to _____ Feet	Perforation Interval _____ to _____ Feet or Open Hole Interval _____ to _____ Feet

UNDER PENALTY OF PERJURY I HEREBY ATTEST THAT THE INFORMATION CONTAINED HEREIN IS TRUE AND CORRECT TO THE BEST OF MY KNOWLEDGE

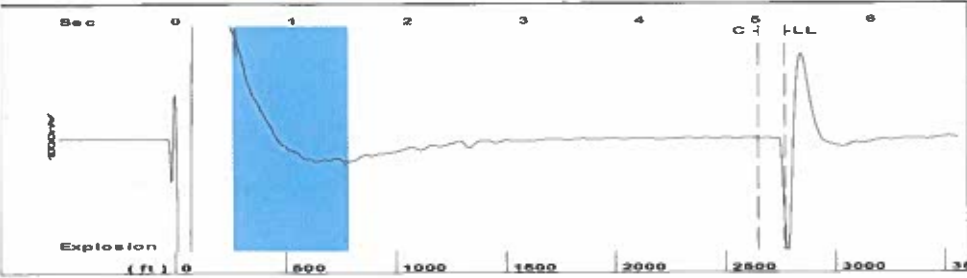
Submitted Electronically

<b>Do NOT Write in This Space - KCC USE ONLY</b>	Date Tested: _____	Results: _____	Date Plugged: _____	Date Repaired: _____	Date Put Back in Service: _____
	Review Completed by: _____ Comments: _____				
TA Approved: <input type="checkbox"/> Yes <input type="checkbox"/> Denied Date: _____					

Mail to the Appropriate KCC Conservation Office:

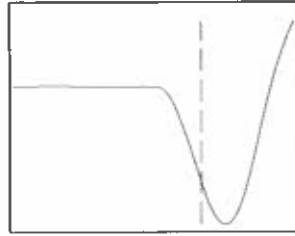
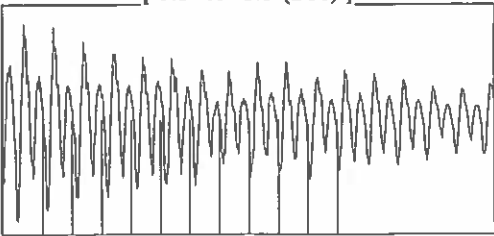
	KCC District Office #1 - 210 E. Frontview, Suite A, Dodge City, KS 67801	Phone 620.682.7933
	KCC District Office #2 - 3450 N. Rock Road, Building 600, Suite 601, Wichita, KS 67226	Phone 316.337.7400
	KCC District Office #3 - 137 E. 21st St., Chanute, KS 66720	Phone 620.902.6450
	KCC District Office #4 - 2301 E. 13th Street, Hays, KS 67601-2651	Phone 785.261.6250

Group: ELKHART ROUTE 1 Well: BROWN G-1 (acquired on: 11/10/23 09:17:56)



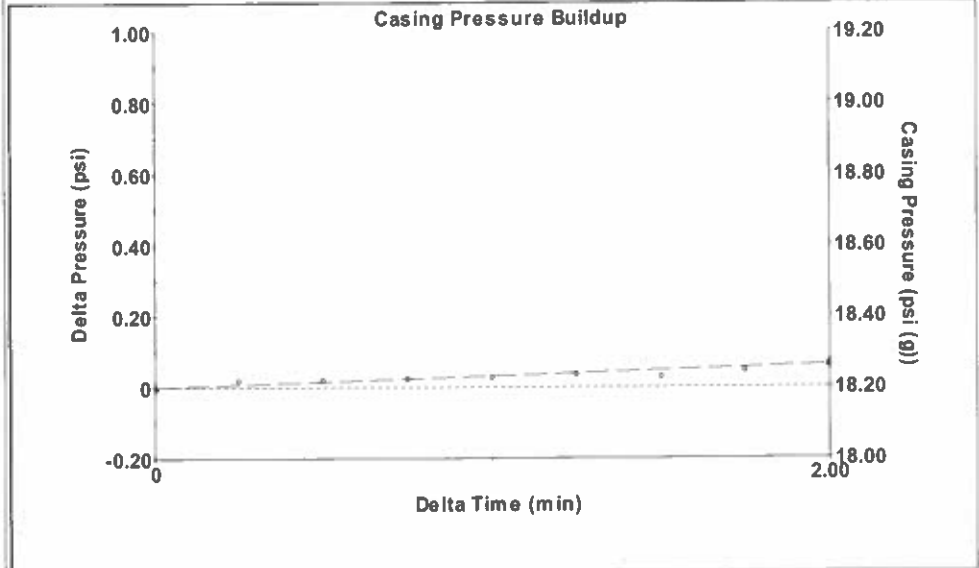
Filter Type High Pass Automatic Collar Count Yes Time 5.256 sec  
 Manual Acoustic Velo 1034.78 ft/s Manual JTS/sec 16.7224 Joints 89.4403 Jts  
 Depth 2767.28 ft

[ 0.5 to 1.5 (Sec) ]



Analysis Method: Automatic

Group: ELKHART ROUTE 1 Well: BROWN G-1 (acquired on: 11/10/23 09:17:56)



Change in Pressure 0.06 psi PT10411  
 Change in Time 2.00 min Range 0 - ? psi

Group: ELKHART ROUTE 1 Well: BROWN G-1 (acquired on: 11/10/23 09:17:56)

Production Current Potential  
 Oil -\*- -\*- BBL/D  
 Water -\*- -\*- BBL/D  
 Gas -\*- -\*- Mscf/D

IPR Method Vogel  
 PBHP/SBHP -\*-  
 Production Efficiency 0.0

Oil 40 deg.API  
 Water 1.05 Sp.Gr.H2O  
 Gas 0.92 Sp.Gr.AIR

Acoustic Velocity 1053 ft/s

Casing Pressure 18.2 psi (g)  
 Casing Pressure Buildup 0.063 psi  
 2.00 min  
 Gas/Liquid Interface Pressure 21.2 psi (g)

Liquid Level Depth 2767.28 ft  
 Pump Intake Depth 4534.00 ft  
 Formation Depth 4595.00 ft



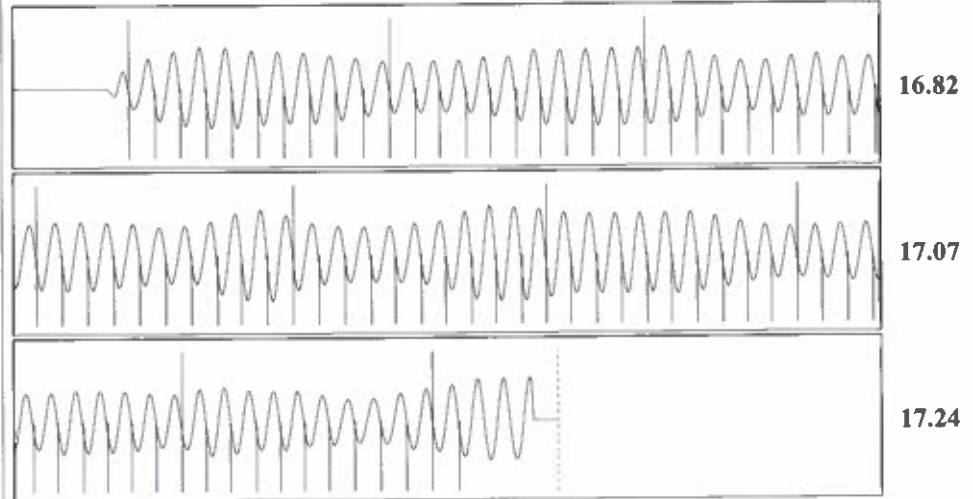
Producing Annular Gas Flow 1 Mscf/D  
 % Liquid 98 %

Pump Intake 599.2 psi (g)  
 Producing BHP 626.5 psi (g)  
 Static BHP -\*- psi (g)

Formation Submergence  
 Total Gaseous Liquid Column HT (TVD) 1767 ft  
 Equivalent Gas Free Liquid HT (TVD) 1727 ft

Acoustic Test

Group: ELKHART ROUTE 1 Well: BROWN G-1 (acquired on: 11/10/23 09:17:56)



Acoustic Velocity 1053 ft/s Joints counted 81  
 Joints Per Second 17.0168 jts/sec Joints to liquid level 89.4403  
 Depth to liquid level 2767.28 ft Filter Width 14.7224 18.7224  
 Automatic Collar Count Yes Time to 1st Collar 0.268 5.028

Conservation Division  
District Office No. 1  
210 E. Frontview, Suite A  
Dodge City, KS 67801



Phone: 620-682-7933  
<http://kcc.ks.gov/>

Andrew J. French, Chairperson  
Dwight D. Keen, Commissioner  
Annie Kuether, Commissioner

Laura Kelly, Governor

11/13/2023

Katherine McClurkan  
Merit Energy Company, LLC  
13727 NOEL ROAD, SUITE 1200  
DALLAS, TX 75240-7362

Re: Temporary Abandonment  
API 15-129-20767-00-00  
Brown G 1  
NW/4 Sec.25-34S-42W  
Morton County, Kansas

Dear Katherine McClurkan:

"Your temporary abandonment (TA) application for the well listed above has been approved. In accordance with K.A.R. 82-3-111 the TA status of this well will expire 11/13/2024.

- \* If you return this well to service or plug it, please notify the District Office.
- \* If you sell this well you are required to file a Transfer of Operator form, T-1.
- \* If the well will remain temporarily abandoned, you must submit a new TA application, CP-111, before 11/13/2024.

You may contact me at the number above if you have questions.

Very truly yours,

Michael Maier"