

KANSAS CORPORATION COMMISSION
OIL & GAS CONSERVATION DIVISION

Form must be Typed
Form must be signed

TEMPORARY ABANDONMENT WELL APPLICATION

All blanks must be complete

OPERATOR: License#
Name:
Address 1:
Address 2:
City: State: Zip:
Contact Person:
Phone:
Contact Person Email:
Field Contact Person:
Field Contact Person Phone:

API No. 15-
Spot Description:
Sec. Twp. S. R.
GPS Location: Lat: Long:
Datum: NAD27 NAD83 WGS84
County: Elevation:
Lease Name: Well #:
Well Type: Oil Gas OG WSW Other:
SWD Permit #: ENHR Permit #:
Gas Storage Permit #:
Spud Date: Date Shut-In:

Table with 7 columns: Conductor, Surface, Production, Intermediate, Liner, Tubing. Rows include Size, Setting Depth, Amount of Cement, Top of Cement, Bottom of Cement.

Casing Fluid Level from Surface: How Determined? Date:
Casing Squeeze(s): to w / sacks of cement, to w / sacks of cement. Date:
Do you have a valid Oil & Gas Lease? Yes No
Depth and Type: Junk in Hole at Tools in Hole at Casing Leaks: Yes No Depth of casing leak(s):
Type Completion: ALT. I ALT. II Depth of: DV Tool: w / sacks of cement Port Collar: w / sack of cement
Packer Type: Size: Inch Set at: Feet
Total Depth: Plug Back Depth: Plug Back Method:

Geological Data:

Table with 4 columns: Formation Name, Formation Top, Formation Base, Completion Information. Rows 1 and 2.

UNDER PENALTY OF PERJURY I HEREBY ATTEST THAT THE INFORMATION CONTAINED HEREIN IS TRUE AND CORRECT TO THE BEST OF MY KNOWLEDGE

Submitted Electronically

Do NOT Write in This Space - KCC USE ONLY
Date Tested: Results: Date Plugged: Date Repaired: Date Put Back in Service:
Review Completed by: Comments:
TA Approved: Yes Denied Date:

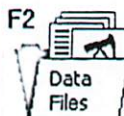
Mail to the Appropriate KCC Conservation Office:

Table with 2 columns: Office Address, Phone. Rows for District Office #1, #2, #3, #4.

File Mode Option Tools Help

Acquire Mode

Recall Mode



Select Liquid Level | Depth Determination |

Production	Current	Potential	
Oil			BBL/D
Water			BBL/D
Gas			Mscf/D

IPR Method

PBHP/SBHP

Producing Efficiency %

Fluid Densities

Oil	<input type="text" value="40"/>	deg.API
Water	<input type="text" value="1.05"/>	Sp.Gr.H2O
Gas Gravity	<input type="text" value="0.69"/>	Air = 1

Acoustic Velocity ft/s

SBHP Worksheet...

Casing Pressure BHP | Collars |

Casing Pressure psi (g)

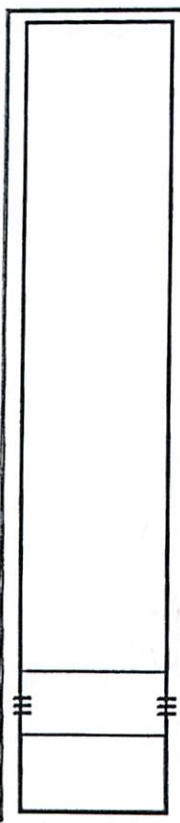
Casing Pressure Buildup psi

min

Gas/Liquid Interface Pres. psi (g)

Liquid Level Depth MD ft

Formation Depth MD ft



Well State:

Oil Column Height MD ft

Water Column Height MD ft

Reservoir Pressure (SBHP) psi (g)

Pump Submergence

Comment

File Mode Option Tools Help

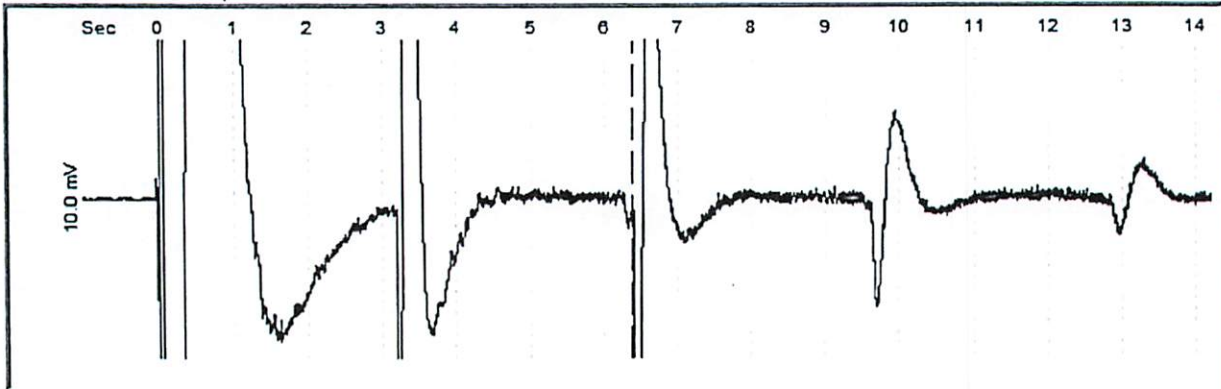
- Acquire Mode
- Recall Mode

F2 Data Files

F3 Select Test
P/C
DYN
ACU

F4 Analyze

Select Liquid Level | Depth Determination | Casing Pressure | BHP | Collars |

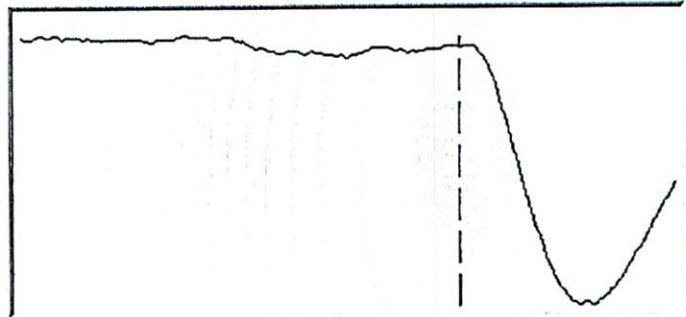


Indicator @ 6.386 sec Apply Low Pass Filter Move Indicator ≤ - Left Right - ≥

Go to Automatically Selected Kicks
<< Prev Kick Next Kick >> Reset

Scale Shot Trace
Scale Up Scale Down Reset

[Alt-1] Gun Parameters
Pulse Type: Explosion Implosion



< Pg Up Pg Dwn >

11/13/2023

Jason Rucker
Raymond Oil Company, Inc.
PO BOX 48788
WICHITA, KS 67201-8788

Re: Temporary Abandonment
API 15-109-21051-00-00
Steckel/Darney 4
SW/4 Sec.01-14S-32W
Logan County, Kansas

Dear Jason Rucker:

"Your temporary abandonment (TA) application for the well listed above has been approved. In accordance with K.A.R. 82-3-111 the TA status of this well will expire 11/13/2024.

- * If you return this well to service or plug it, please notify the District Office.
- * If you sell this well you are required to file a Transfer of Operator form, T-1.
- * If the well will remain temporarily abandoned, you must submit a new TA application, CP-111, before 11/13/2024.

You may contact me at the number above if you have questions.

Very truly yours,

RICHARD WILLIAMS"