

KANSAS CORPORATION COMMISSION
OIL & GAS CONSERVATION DIVISION

Form must be Typed
Form must be signed

TEMPORARY ABANDONMENT WELL APPLICATION

All blanks must be complete

OPERATOR: License#
Name:
Address 1:
Address 2:
City: State: Zip:
Contact Person:
Phone:
Contact Person Email:
Field Contact Person:
Field Contact Person Phone:

API No. 15-
Spot Description:
Sec. Twp. S. R.
feet from N / S Line of Section
feet from E / W Line of Section
GPS Location: Lat: , Long:
Datum: NAD27 NAD83 WGS84
County: Elevation: GL KB
Lease Name: Well #:
Well Type: (check one) Oil Gas OG WSW Other:
SWD Permit #: ENHR Permit #:
Gas Storage Permit #:
Spud Date: Date Shut-In:

Table with 7 columns: Conductor, Surface, Production, Intermediate, Liner, Tubing. Rows include Size, Setting Depth, Amount of Cement, Top of Cement, Bottom of Cement.

Casing Fluid Level from Surface: How Determined? Date:
Casing Squeeze(s): to w / sacks of cement, to w / sacks of cement. Date:
Do you have a valid Oil & Gas Lease? Yes No
Depth and Type: Junk in Hole at Tools in Hole at Casing Leaks: Yes No Depth of casing leak(s):
Type Completion: ALT. I ALT. II Depth of: DV Tool: w / sacks of cement Port Collar: w / sack of cement
Packer Type: Size: Inch Set at: Feet
Total Depth: Plug Back Depth: Plug Back Method:

Geological Data:

Table with 4 columns: Formation Name, Formation Top, Formation Base, Completion Information. Rows 1 and 2.

UNDER PENALTY OF PERJURY I HEREBY ATTEST THAT THE INFORMATION CONTAINED HEREIN IS TRUE AND CORRECT TO THE BEST OF MY KNOWLEDGE

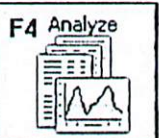
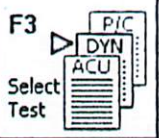
Submitted Electronically

Do NOT Write in This Space - KCC USE ONLY
Date Tested: Results: Date Plugged: Date Repaired: Date Put Back in Service:
Review Completed by: Comments:
TA Approved: Yes Denied Date:

Mail to the Appropriate KCC Conservation Office:

Table with 3 columns: District Office #, Address, Phone. Rows 1-4.

Acquire Mode
Recall Mode



Select Liquid Level		Depth Determination	
	Current	Potential	
Oil			BBL/D
Water			BBL/D
Gas			Mscf/D

IPR Method

PBHP/SBHP

Producing Efficiency %

Fluid Densities

Oil	<input type="text" value="40"/>	deg API
Water	<input type="text" value="1.05"/>	Sp.Gr.H2O
Gas Gravity	<input type="text" value="1.15"/>	Air = 1

Acoustic Velocity ft/s

SBHP Worksheet...

Casing Pressure BHP

Casing Pressure psi (g)

Casing Pressure Buildup psi

min

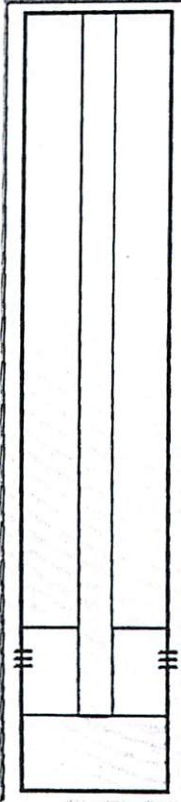
Gas/Liquid Interface Pres. psi (g)

Liquid Level Depth

MD ft

Formation Depth

MD ft



Well State:

Oil Column Height

MD ft

Water Column Height

MD ft

Reservoir Pressure (SBHP)

psi (g)

Pump Submergence

Comment

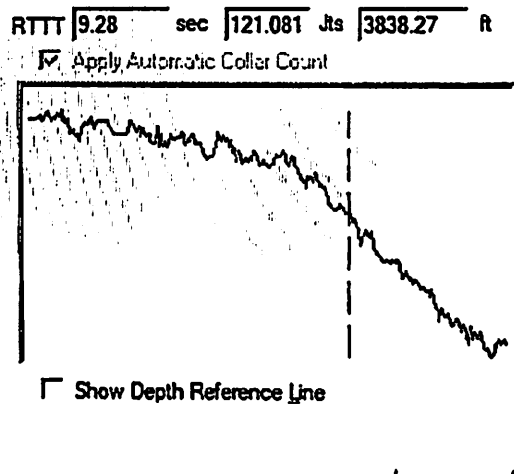
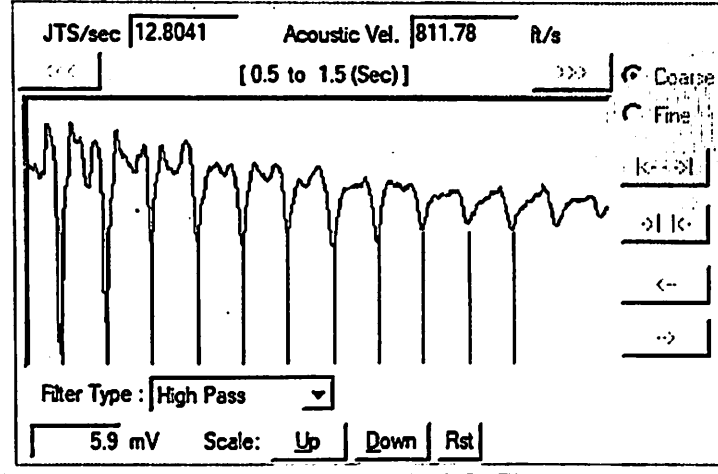
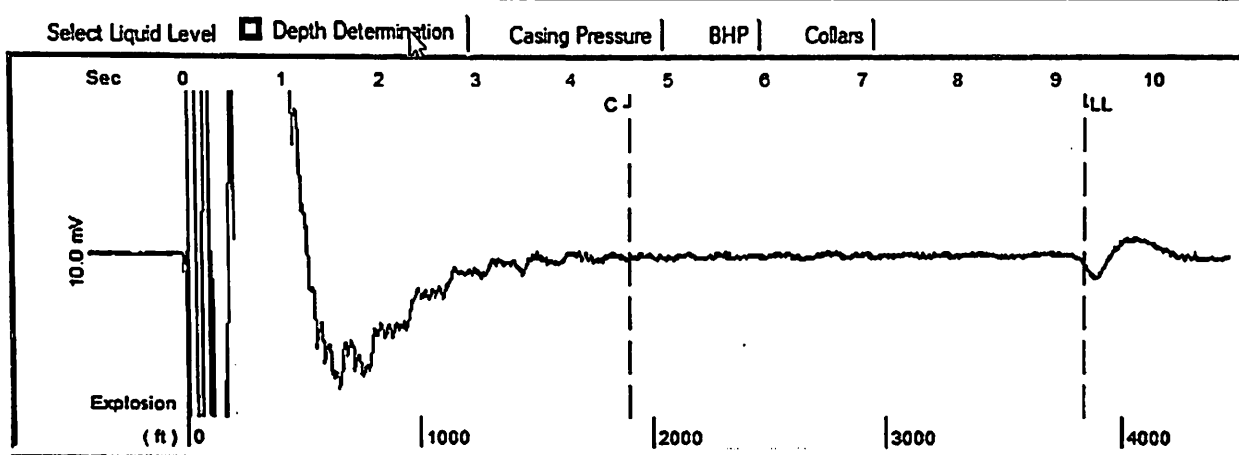
File Mode Option Tools Help

Acquire Mode
Recall Mode

F2 Data Files

F3 Select Test
P/C
DYN
ACU

F4 Analyze



Analysis Method: Automatic

< Pg Up | Pg Dwn >

11/13/2023

Ted McHenry
Raymond Oil Company, Inc.
PO BOX 48788
WICHITA, KS 67201-8788

Re: Temporary Abandonment
API 15-109-20938-00-00
ROSE C 1
SE/4 Sec.11-14S-32W
Logan County, Kansas

Dear Ted McHenry:

"Your temporary abandonment (TA) application for the well listed above has been approved. In accordance with K.A.R. 82-3-111 the TA status of this well will expire 11/13/2024.

- * If you return this well to service or plug it, please notify the District Office.
- * If you sell this well you are required to file a Transfer of Operator form, T-1.
- * If the well will remain temporarily abandoned, you must submit a new TA application, CP-111, before 11/13/2024.

You may contact me at the number above if you have questions.

Very truly yours,

RICHARD WILLIAMS"