

KANSAS CORPORATION COMMISSION
OIL & GAS CONSERVATION DIVISION

TEMPORARY ABANDONMENT WELL APPLICATION

OPERATOR: License#
Name:
Address 1:
Address 2:
City: State: Zip:
Contact Person:
Phone:
Contact Person Email:
Field Contact Person:
Field Contact Person Phone:

API No. 15-
Spot Description:
Sec. Twp. S. R.
GPS Location: Lat: Long:
Datum: NAD27 NAD83 WGS84
County: Elevation:
Lease Name: Well #:
Well Type: Oil Gas OG WSW Other:
SWD Permit #: ENHR Permit #:
Gas Storage Permit #:
Spud Date: Date Shut-In:

Table with 7 columns: Conductor, Surface, Production, Intermediate, Liner, Tubing. Rows include Size, Setting Depth, Amount of Cement, Top of Cement, Bottom of Cement.

Casing Fluid Level from Surface: How Determined? Date:
Casing Squeeze(s): to w / sacks of cement, to w / sacks of cement. Date:
Do you have a valid Oil & Gas Lease? Yes No
Depth and Type: Junk in Hole at Tools in Hole at Casing Leaks: Yes No Depth of casing leak(s):
Type Completion: ALT. I ALT. II Depth of: DV Tool: w / sacks of cement Port Collar: w / sack of cement
Packer Type: Size: Inch Set at: Feet
Total Depth: Plug Back Depth: Plug Back Method:

Geological Date:

Table with 4 columns: Formation Name, Formation Top, Formation Base, Completion Information. Rows 1 and 2.

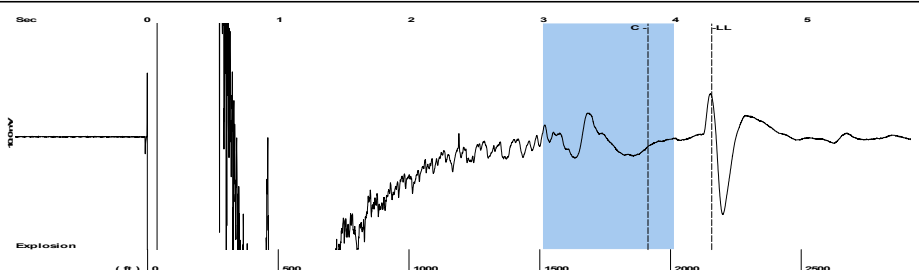
UNDER PENALTY OF PERJURY I HEREBY ATTEST THAT THE INFORMATION CONTAINED HEREIN IS TRUE AND CORRECT TO THE BEST OF MY KNOWLEDGE

Submitted Electronically

Do NOT Write in This Space - KCC USE ONLY
Date Tested: Results: Date Plugged: Date Repaired: Date Put Back in Service:
Review Completed by: Comments:
TA Approved: Yes Denied Date:

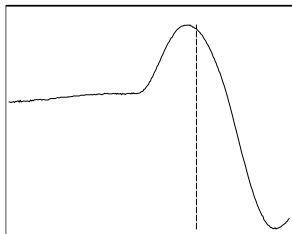
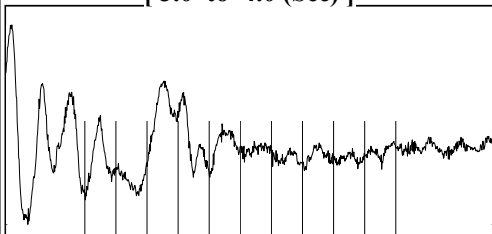
Mail to the Appropriate KCC Conservation Office:

Table with 3 columns: District Office, Address, Phone. Rows for District Office #1, #2, #3, #4.



Filter Type High Pass Automatic Collar Count Yes Time 4.275 sec
 Manual Acoustic Veloc 992.175 ft/s Manual JTS/sec 15.6495 Joints 68.0572 Jts
 Depth 2157.41 ft

[3.0 to 4.0 (Sec)]



Analysis Method: Automatic



Change in Pressure 0.00 psi PT18514
 Range 0 - ? psi
 Change in Time 0.00 min

Production	Potential	Casing Pressure
Current		62.4 psi (g)
Oil - *-	- *- BBL/D	Casing Pressure Buildup
Water - *-	- *- BBL/D	- *- psi
Gas - *-	- *- Mscf/D	- *- min
		Gas/Liquid Interface Pressure
		- *- psi (g)
IPR Method	Vogel	Liquid Level Depth
PBHP/SBHP	- *-	2157.41 ft
Production Efficiency	0.0	Pump Intake Depth
		- *- ft
Oil 40 deg.API		Formation Depth
Water 1.05 Sp.Gr.H2O		2694.00 ft
Gas 0.96 Sp.Gr.AIR		
Acoustic Velocity	1009.32 ft/s	
Formation Submergence		
Total Gaseous Liquid Column HT (TVD)	- *- ft	
Equivalent Gas Free Liquid HT (TVD)	- *- ft	

Producing

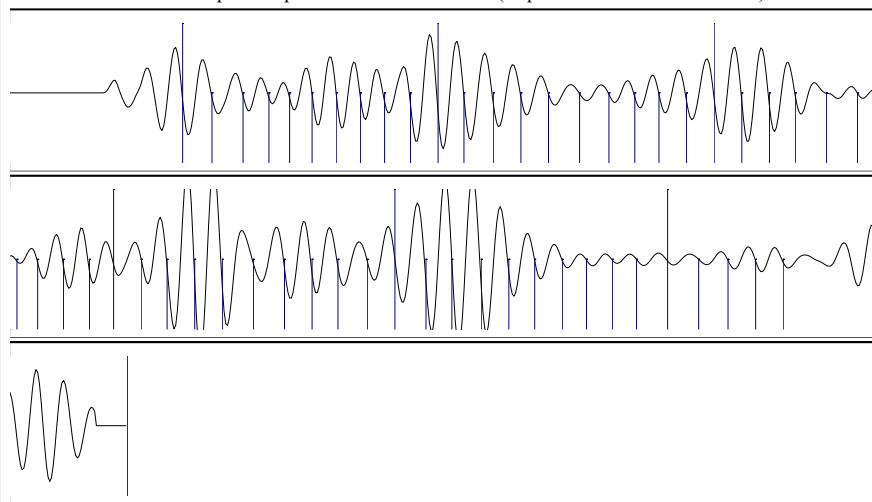
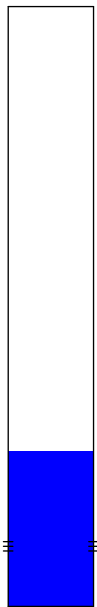
Annular Gas Flow - *- Mscf/D

% Liquid 100 %

Pump Intake - *- psi (g)

Producing BHP - *- psi (g)

Static BHP - *- psi (g)



Acoustic Velocity	1009.32 ft/s	Joints counted	54
Joints Per Second	15.9198 jts/sec	Joints to liquid level	68.0572
Depth to liquid level	2157.41 ft	Filter Width	13.6495 17.6495
Automatic Collar Count	Yes	Time to 1st Collar	0.4 3.792

Conservation Division
District Office No. 1
210 E. Frontview, Suite A
Dodge City, KS 67801



Phone: 620-682-7933
<http://kcc.ks.gov/>

Andrew J. French, Chairperson
Dwight D. Keen, Commissioner
Annie Kuether, Commissioner

Laura Kelly, Governor

11/17/2023

Octavio morales
American Warrior, Inc.
PO BOX 399
GARDEN CITY, KS 67846-0399

Re: Temporary Abandonment
API 15-055-00785-00-00
GERBER 2
NW/4 Sec.34-23S-32W
Finney County, Kansas

Dear Octavio morales:

"Your temporary abandonment (TA) application for the well listed above has been approved. In accordance with K.A.R. 82-3-111 the TA status of this well will expire 11/17/2024.

- * If you return this well to service or plug it, please notify the District Office.
- * If you sell this well you are required to file a Transfer of Operator form, T-1.
- * If the well will remain temporarily abandoned, you must submit a new TA application, CP-111, before 11/17/2024.

You may contact me at the number above if you have questions.

Very truly yours,

Michael Maier"