

KANSAS CORPORATION COMMISSION
OIL & GAS CONSERVATION DIVISION

TEMPORARY ABANDONMENT WELL APPLICATION

OPERATOR: License#
Name:
Address 1:
Address 2:
City: State: Zip:
Contact Person:
Phone:
Contact Person Email:
Field Contact Person:
Field Contact Person Phone:

API No. 15-
Spot Description:
Sec. Twp. S. R.
GPS Location: Lat: Long:
Datum: NAD27 NAD83 WGS84
County: Elevation:
Lease Name: Well #:
Well Type: Oil Gas OG WSW Other:
SWD Permit #: ENHR Permit #:
Gas Storage Permit #:
Spud Date: Date Shut-In:

Table with 7 columns: Conductor, Surface, Production, Intermediate, Liner, Tubing. Rows include Size, Setting Depth, Amount of Cement, Top of Cement, Bottom of Cement.

Casing Fluid Level from Surface: How Determined? Date:
Casing Squeeze(s): to w / sacks of cement, to w / sacks of cement. Date:
Do you have a valid Oil & Gas Lease? Yes No
Depth and Type: Junk in Hole at Tools in Hole at Casing Leaks: Yes No Depth of casing leak(s):
Type Completion: ALT. I ALT. II Depth of: DV Tool: w / sacks of cement Port Collar: w / sack of cement
Packer Type: Size: Inch Set at: Feet
Total Depth: Plug Back Depth: Plug Back Method:

Geological Data:

Table with 4 columns: Formation Name, Formation Top, Formation Base, Completion Information. Rows 1 and 2.

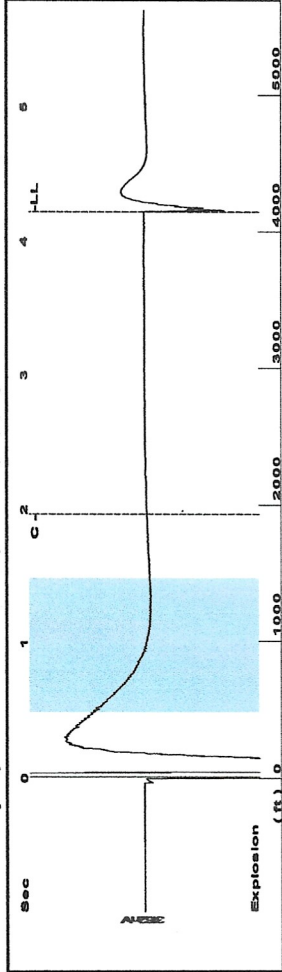
UNDER PENALTY OF PERJURY I HEREBY ATTEST THAT THE INFORMATION CONTAINED HEREIN IS TRUE AND CORRECT TO THE BEST OF MY KNOWLEDGE

Submitted Electronically

Do NOT Write in This Space - KCC USE ONLY
Date Tested: Results: Date Plugged: Date Repaired: Date Put Back in Service:
Review Completed by: Comments:
TA Approved: Yes Denied Date:

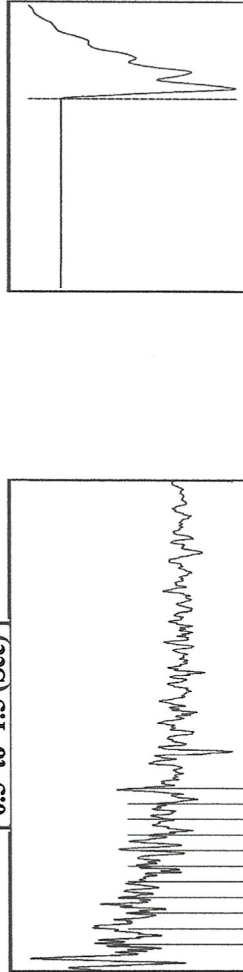
Mail to the Appropriate KCC Conservation Office:

Table with 3 columns: District Office #, Address, Phone. Includes a map of Kansas with numbered districts 1-4.



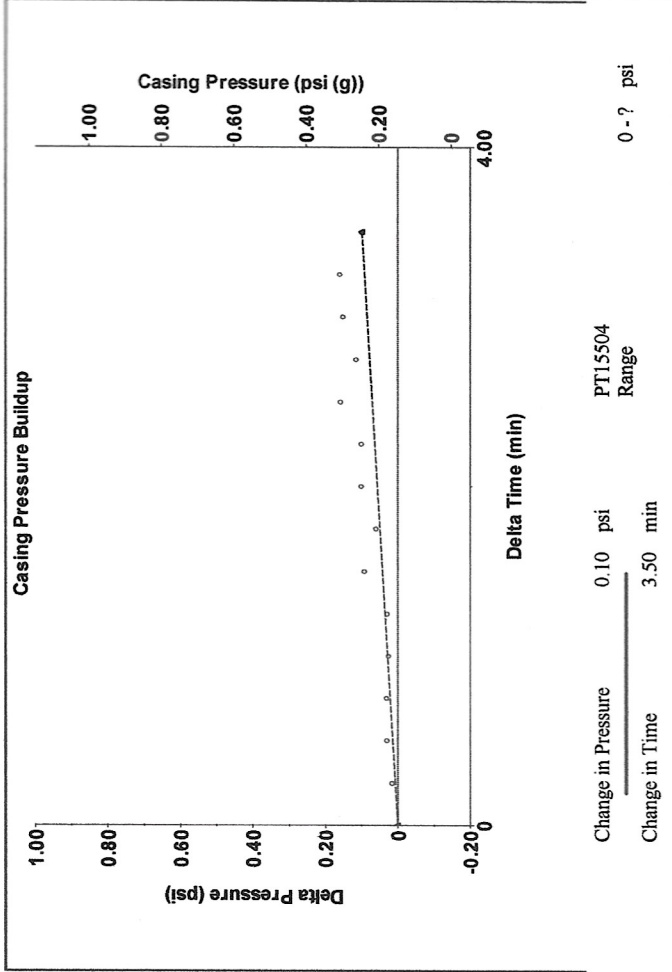
Filter Type High Pass Automatic Collar Count Yes Time 4.223 sec
 Manual Acoustic Velocity 880.88 ft/s Manual JTS/sec 31.348 Joints 138.136 Jts
 Depth 4144.07 ft

[0.5 to 1.5 (Sec)]

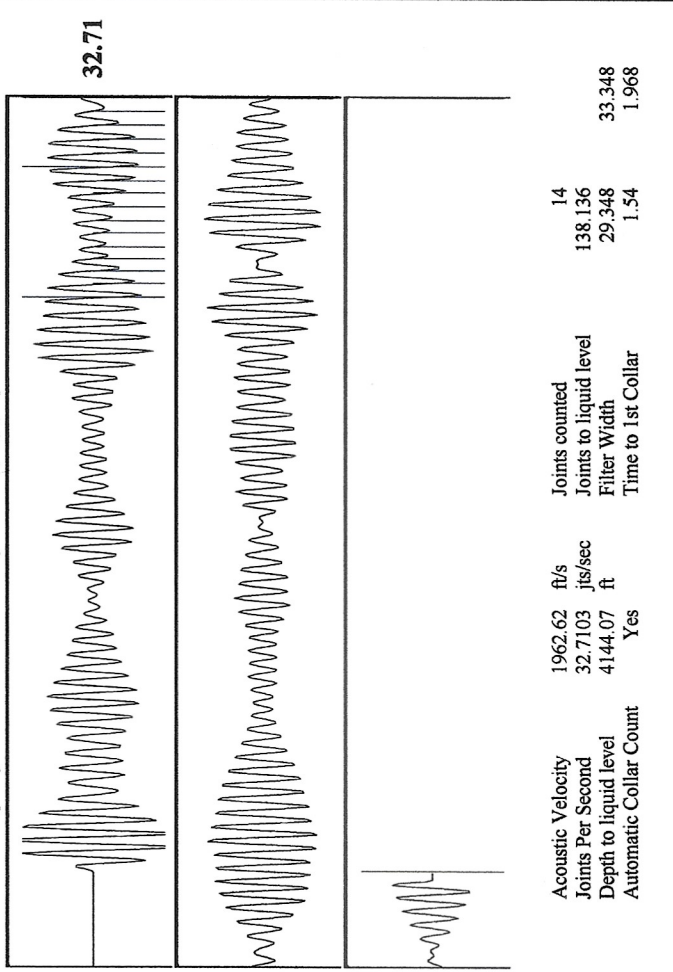


Analysis Method: Automatic

Production	Potential	Casing Pressure	Producing
Oil 0	- * - BBL/D 0.1 psi (g)	0.1 psi (g)	Annular
Water 0	- * - BBL/D 0.1 psi	Casing Pressure Buildup 0.1 psi	Gas Flow - * - Mscf/D
Gas 0.0	- * - Mscf/D 3.50 min	Gas/Liquid Interface Pressure 1.3 psi (g)	% Liquid 92 %
IPR Method Vogel		Liquid Level Depth 4144.07 ft	Pump Intake - * - psi (g)
PBHP/SBHP - * -		Pump Intake Depth - * - ft	Producing BHP 34.7 psi (g)
Production Efficiency 0.0		Formation Depth 4224.00 ft	Static BHP - * - psi (g)
Oil 39 deg API			
Water 1.05 Sp.Gr.H2O			
Gas 0.55 Sp.Gr.AIR			
Acoustic Velocity 1962.62 ft/s			
Formation Submergence			
Total Gaseous Liquid Column HT (TVD) 80 ft			
Equivalent Gas Free Liquid HT (TVD) 73 ft			
Acoustic Test			



Change in Pressure 0.10 psi PT15504 Range
 Change in Time 3.50 min



Acoustic Velocity 1962.62 ft/s Joints counted 14
 Joints Per Second 32.7103 jts/sec Joints to liquid level 138.136
 Depth to liquid level 4144.07 ft Filter Width 29.348
 Automatic Collar Count Yes Time to 1st Collar 1.54
 33.348
 1.968

Conservation Division
District Office No. 1
210 E. Frontview, Suite A
Dodge City, KS 67801



Phone: 620-682-7933
<http://kcc.ks.gov/>

Andrew J. French, Chairperson
Dwight D. Keen, Commissioner
Annie Kuether, Commissioner

Laura Kelly, Governor

12/04/2023

Kent Strube
Hartman Oil Co., Inc.
10500 E BERKELEY SQ PKWY STE 100
WICHITA, KS 67206

Re: Temporary Abandonment
API 15-055-21283-00-00
GARDEN CITY A 3-34
SE/4 Sec.34-23S-34W
Finney County, Kansas

Dear Kent Strube:

"Your temporary abandonment (TA) application for the well listed above has been approved. In accordance with K.A.R. 82-3-111 the TA status of this well will expire 12/04/2024.

- * If you return this well to service or plug it, please notify the District Office.
- * If you sell this well you are required to file a Transfer of Operator form, T-1.
- * If the well will remain temporarily abandoned, you must submit a new TA application, CP-111, before 12/04/2024.

You may contact me at the number above if you have questions.

Very truly yours,

Michael Maier"